

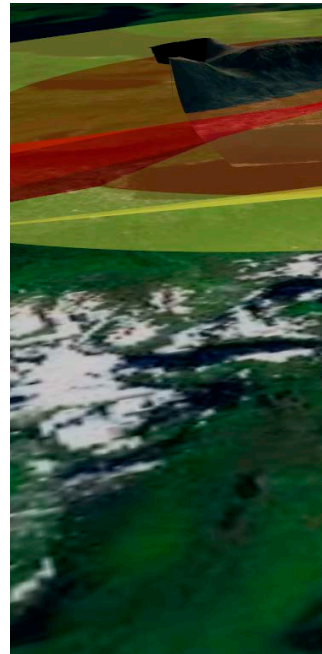
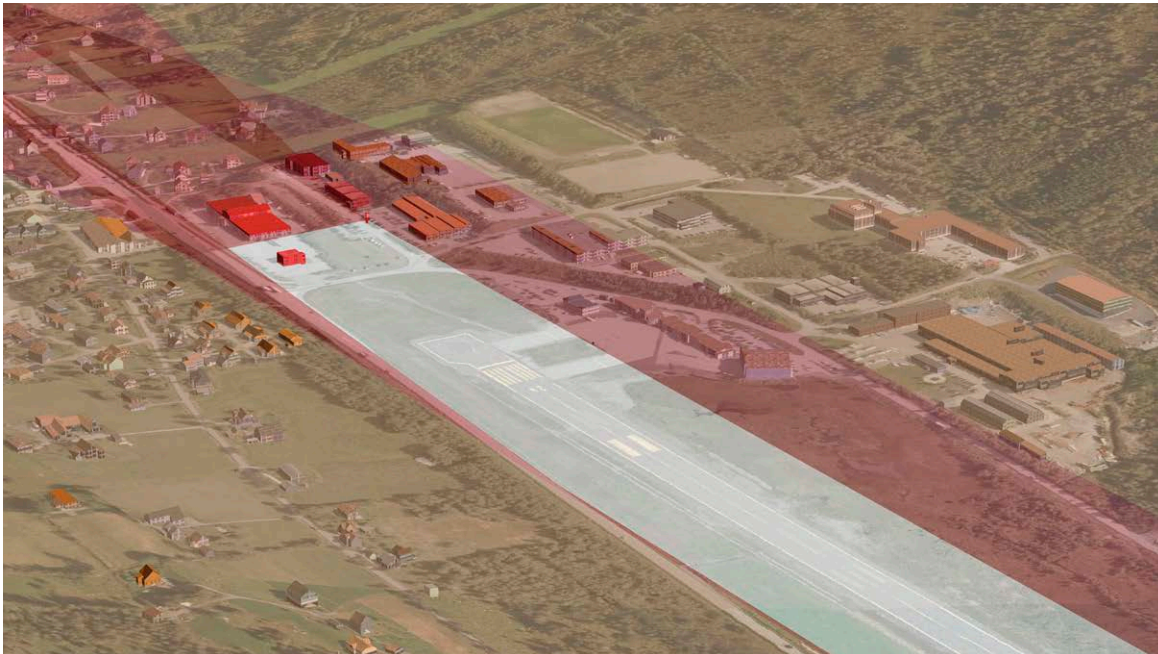


ArcGIS®:
Better Aeronautical
Data Management



Imagine Your World as It Should Be

The latest aeronautical information from any source is at your fingertips. ArcGIS® software can help you discover, manage, and visualize the information you need in both 2D and 3D from a variety of disparate systems including CAD, real-time sensors, and the cloud. ArcGIS is the scalable platform you need to achieve your mission as an innovative aeronautical organization. Extend your data, create new products, and reach for the cloud.



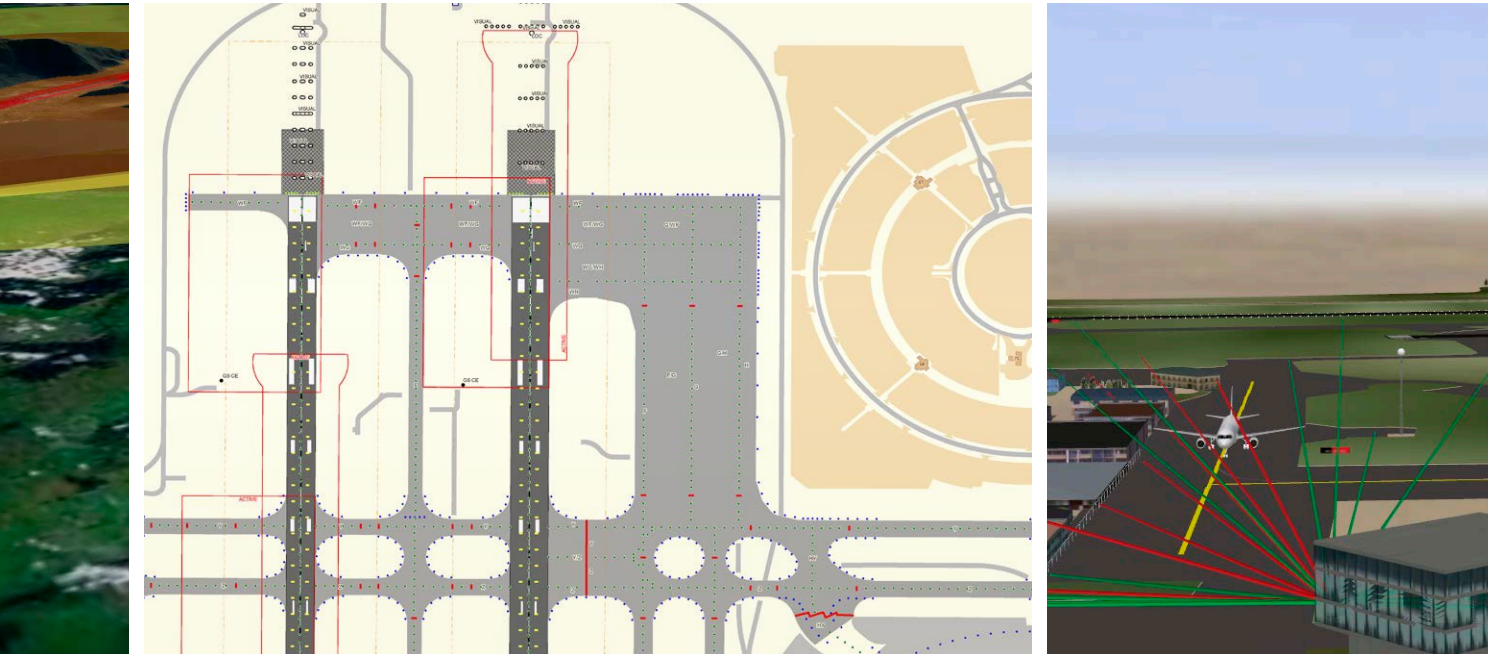
Moving beyond Your Charts and into 3D

Extend your current 2D data holdings, including charts, into 3D. Use this information to create new products for your customers wherever they need them—desktops, the Internet, or even mobile devices.

Aeronautical Web Scenes in the Cloud

Incorporate HTML5 into your aeronautical workflows and product lines. Manage and store data, including 3D data and web scenes, in a public, private, or hybrid cloud so your users can access that information when they need it most.

For more information,
visit esri.com/aeronautical.



Supported Standards

The ArcGIS platform is complete for managing airport data for regulatory compliance including International Civil Aviation Organization (ICAO) Electronic Terrain and Obstacle Data (eTOD) requirements. Standards including WXXM and FIXM can be viewed, and the ability to add temporality, such as temporary digital notices to airmen, is also made possible.

Ready to Grow When You Are

Perhaps your organization is based on desktop technology today but will be moving to the cloud in the future. Maybe you are starting to develop mobile applications and new, innovative ways of providing information to your users. Wherever you are, Esri can meet you there and help you achieve your goals when you are ready.



Esri inspires and enables people to positively impact their future through a deeper, geographic understanding of the changing world around them.

Governments, industry leaders, academics, and nongovernmental organizations trust us to connect them with the analytic knowledge they need to make the critical decisions that shape the planet. For more than 40 years, Esri has cultivated collaborative relationships with partners who share our commitment to solving earth's most pressing challenges with geographic expertise and rational resolve. Today, we believe that geography is at the heart of a more resilient and sustainable future. Creating responsible products and solutions drives our passion for improving quality of life everywhere.



Contact Esri

380 New York Street
Redlands, California 92373-8100 USA

1 800 447 9778
T 909 793 2853
F 909 793 5953
info@esri.com

esri.com

Offices worldwide
esri.com/locations

Copyright © 2017 Esri. All rights reserved. Esri, the Esri globe logo, ArcGIS, @esri.com, and esri.com are trademarks, service marks, or registered marks of Esri in the United States, the European Community, or certain other jurisdictions. Other companies and products or services mentioned herein may be trademarks, service marks, or registered marks of their respective mark owners.