



# Maps Against Drunk Driving

## Oklahoma Builds Online Sobriety Checkpoint Finder

Police publicize sobriety checkpoints, not so partyers can find a route home, but so more people will understand the criminal and fatal risks of driving under the influence.

For a checkpoint to be effective, according to the National Highway Traffic Safety Administration, it has to be “highly visible and publicized extensively.” That’s precisely what public safety officials are doing in Oklahoma, a state that reported 11,000 alcohol-related injury crashes and 154 fatalities in 2014.

The state’s ENDUI campaign hosts the Oklahoma Sobriety Checkpoint Finder app on its website, with a map showing the location of checkpoints and saturation patrols. It also gives an updated tally of arrests for driving under the influence (DUI), drugs, public intoxication, and related violations such as open container citations.

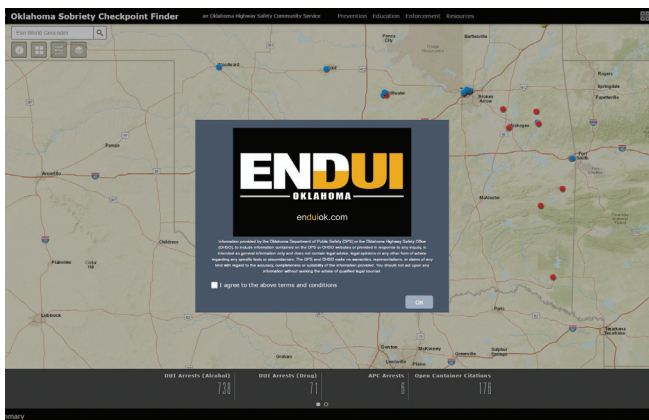
At a sobriety checkpoint, law enforcement officers stop vehicles at a predetermined location to check whether the driver is impaired. They either stop every vehicle or stop vehicles at some regular interval, such as every third or tenth vehicle. A saturation patrol consists of a large number of law enforcement officers patrolling a specific area for a set time to increase visibility of enforcement, as well as to detect and arrest impaired drivers.

“There’s value in letting people know where we’ve been conducting sobriety checkpoints or other types of impaired driving enforcement,” said captain Garrett Vowell of the Oklahoma Highway Patrol in a recent interview with The Oklahoman. “If the public knows the ENDUI teams are active across the state, our hope is that they’ll be far less likely to get behind the wheel while impaired.”

Christopher L. Rogers, traffic enforcement planner for the Oklahoma Department of Public Safety, is the man behind the Oklahoma Sobriety Checkpoint Finder. He’s a retired US Air Force veteran with more than 22 years of global experience in the development of real-time information and intelligent solutions.



“We needed a way to quickly collect the results of our checkpoints and saturation patrols and make this information visually available to the citizens of Oklahoma,” Rogers said. “We used Survey123 for ArcGIS® to quickly create a mobile-friendly data collection application that was deployable on iOS, Android, and Windows devices, allowing our law enforcement officers in the field to easily enter the results of each sobriety event.”



The ENDUI map shows the location and summarized results of sobriety checkpoints and saturation patrols across the state. Summary data at the bottom of the screen changes when you zoom in and out of the map area. The color of the dots represents the type of activity at a given location. By clicking an individual dot, you can see detailed results of that event. By clicking the links across the top menu bar of the application, you access important information regarding the ENDUI program.

Learn more at [esri.com/survey123](http://esri.com/survey123).

Data for the Sobriety Checkpoint Finder is collected via the Survey123 for ArcGIS app, a simple and intuitive form-centric, data gathering solution that makes creating, sharing, and analyzing surveys possible in three steps. Using ArcGIS™ Online, Esri’s cloud-based mapping platform, Rogers and his team created a basemap to customize and refine data from local, university, tribal, county, and state law enforcement efforts. They used Web AppBuilder for ArcGIS to add the final features and functionality, such as display information, and to summarize the total citations and arrests.



Understanding our world.