

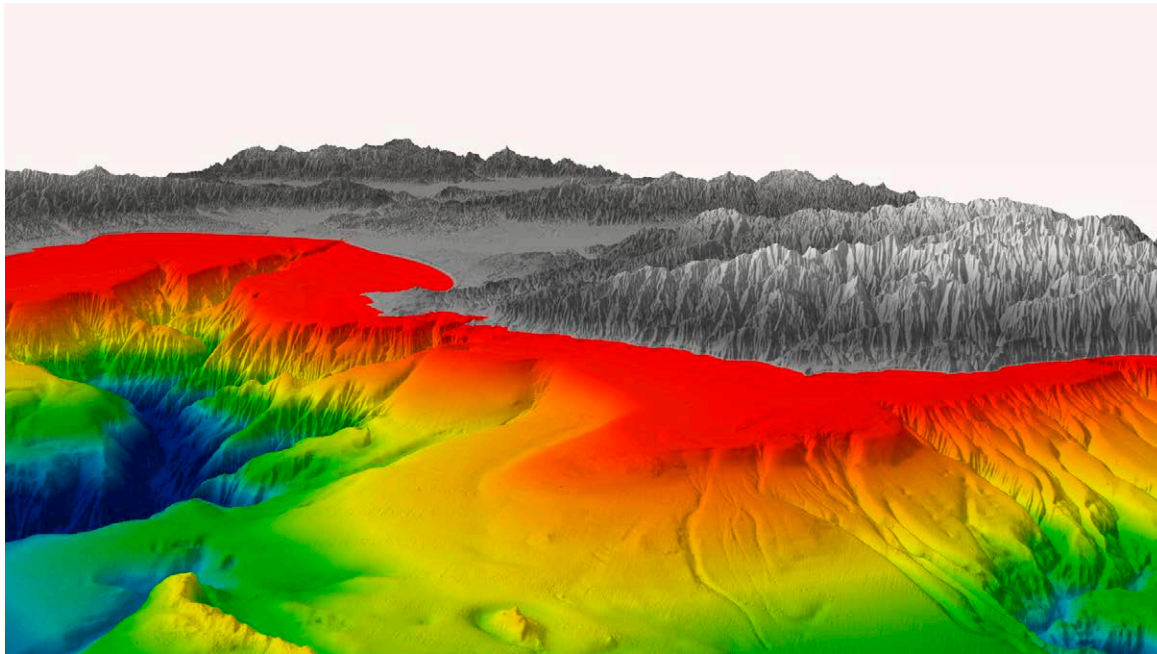
ArcGIS[®]

A Complete Platform for
Managing Bathymetric Data



Know the Full Value of Your Bathymetric Data

By knowing the data sources, uncertainties, and depth, you will be able to dynamically create multiple bathymetric surfaces without duplication and track back in time how the seabed has changed. ArcGIS® for Maritime: Bathymetry provides a scalable, configurable, and easy-to-use data management platform. It can be used by any organization without the burden of dealing with complex databases, so you focus on your real work instead of trying to learn a complicated tool.



Quality and Scalability

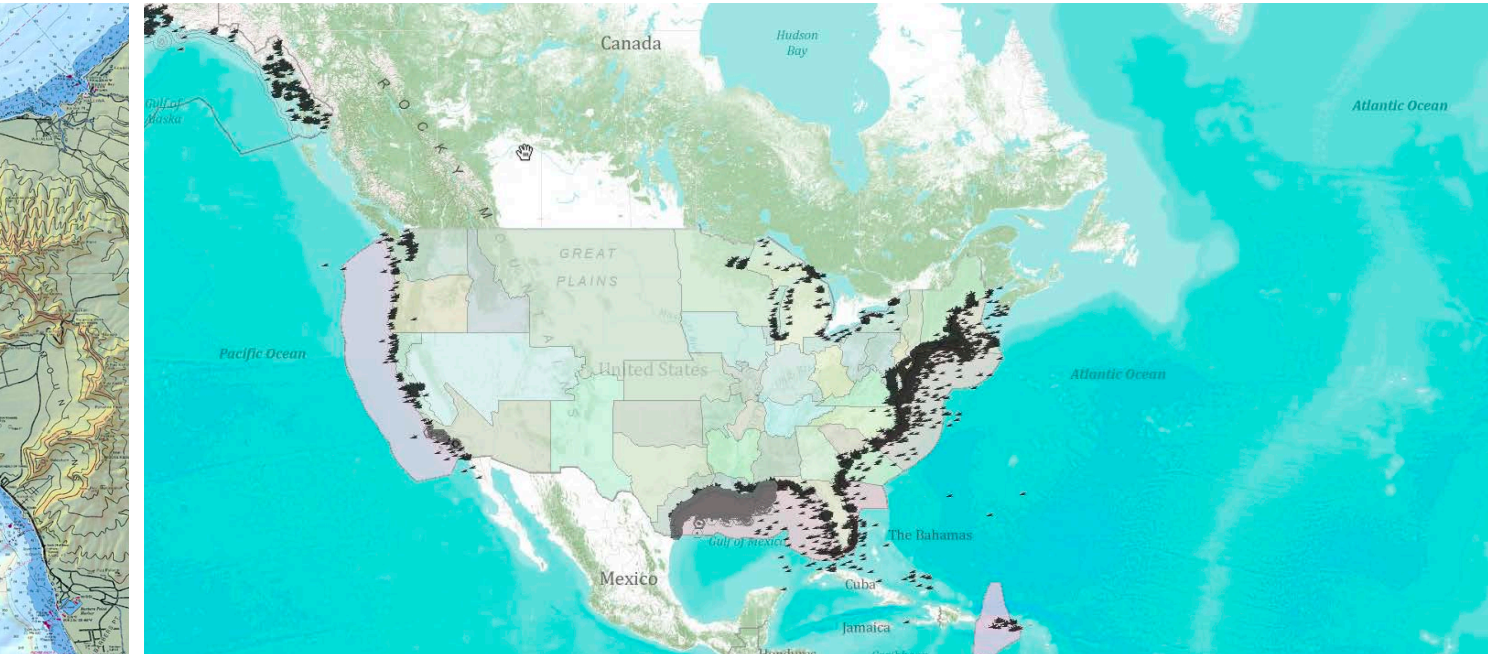
Even though land and ocean elevation datasets come from different sources, the data can be brought together and shared throughout the organization.

Quick Results Delivered

Whether sonar, lidar, or satellite derived bathymetry, the collected data can be combined to create surfaces or extract vector points. It can then be disseminated to both internal and external users as quickly as it is processed.

“We are in the process of making ArcGIS the hub of our bathymetric mapping services.”

Duncan Mallace
Managing Director at MMT UK



A Better Marine Spatial Data Infrastructure

Bathymetric data is the cornerstone of a marine spatial data infrastructure. ArcGIS for Maritime: Bathymetry provides the framework for integrating this data for better management of the ocean and coastal environments.

Learn More

ArcGIS for Maritime: Bathymetry
esri.com/bathy.



Esri inspires and enables people to positively impact their future through a deeper, geographic understanding of the changing world around them.

Governments, industry leaders, academics, and nongovernmental organizations trust us to connect them with the analytic knowledge they need to make the critical decisions that shape the planet. For more than 40 years, Esri has cultivated collaborative relationships with partners who share our commitment to solving earth's most pressing challenges with geographic expertise and rational resolve. Today, we believe that geography is at the heart of a more resilient and sustainable future. Creating responsible products and solutions drives our passion for improving quality of life everywhere.



Contact Esri

380 New York Street
Redlands, California 92373-8100 USA

1 800 447 9778
T 909 793 2853
F 909 793 5953
info@esri.com

esri.com

Offices worldwide
esri.com/locations

Copyright © 2017 Esri. All rights reserved. Esri, the Esri globe logo, ArcGIS, @esri.com, and esri.com are trademarks, service marks, or registered marks of Esri in the United States, the European Community, or certain other jurisdictions. Other companies and products or services mentioned herein may be trademarks, service marks, or registered marks of their respective mark owners.