



LAND ADMINISTRATION

User

The Land Title and Survey Authority of British Columbia

Partner

MDA Systems Ltd

Challenge

Constructing a consolidated parcel fabric from existing fragmented data sources—all in a short time frame and with a limited budget

Solution

- Esri ArcGIS Parcel Editor
- MDA's ASTRA cadastral solution

Results

- Increased accuracy
- Increased operational awareness via real-time access to KPIs
- Reduced turnaround times for service delivery
- Reduced operational costs

British Columbia Weaves a Survey-Aware Fabric

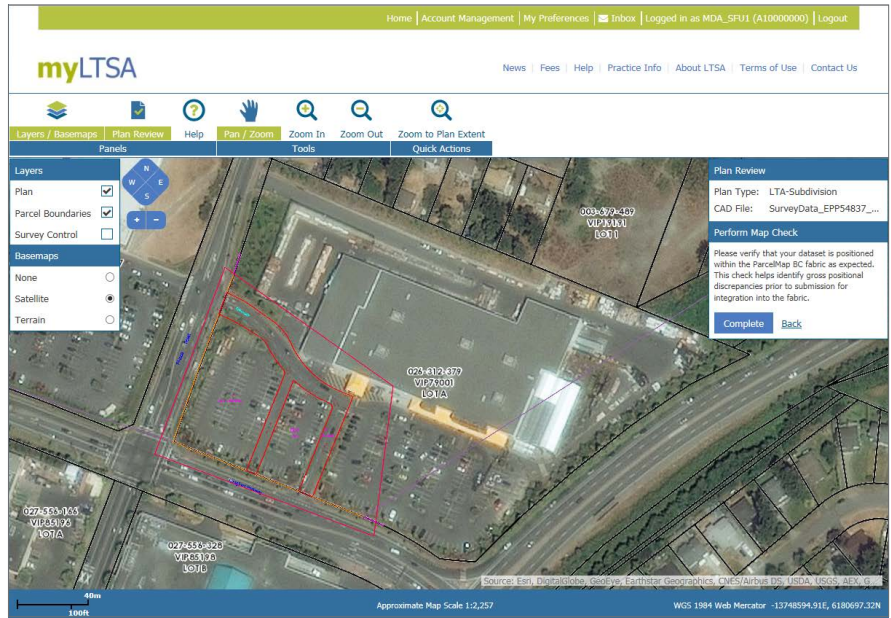
The Land Title and Survey Authority (LTSA) of British Columbia is a publicly accountable, statutory corporation responsible for administering land title and survey systems in British Columbia (BC).

The Challenge

BC parcel data quality varied significantly and attribution was inconsistent. The challenge was to construct a new parcel database from fragmented data in a short time frame and within a fixed budget. Complicating things further, daily parcel editing work had to continue as the system was being modernized.

The Partner

MDA Systems Ltd (MDA) creates advanced geographic information system (GIS) solutions for governments and commercial customers, primarily using the Esri® ArcGIS® platform and industry-standard models and formats. MDA specializes in actualizing parcel modernization initiatives for customers in the land administration domain.



“MDA and Esri made the ParcelMap BC initiative a reality by creating a single operational database with each parcel connected to the LTSA’s land registries.”

Al-Karim Kara, Vice President, Business Innovation and Chief Information Officer

The Solution

MDA designed and implemented an ArcGIS-based system for the LTSA to create a sustainable representation of its integrated parcel fabric. The MDA solution consisted of a contiguous, survey-aware fabric with parcels georeferenced to BC’s underlying provincial survey control network. The primary component of MDA’s cadastral solution is Esri’s authoritative and accurate digital cadastral model based on measurements that preserve field survey dimensions and accuracies in parcel data. ArcGIS apps would enable the fabric and land documentation to be shared with surveyors and the public for self-service.

The Results

The Province of BC now has a survey-aware, complete, comprehensive, and actively maintained parcel fabric with a known level of accuracy throughout, which will support fundamental economic growth through the province. In addition, LTSA customers now have map based access to electronic services.

esri.com/landadministration

