

# ArcGIS® for the Military—Maritime Operations

## Open Maritime Operations Platform

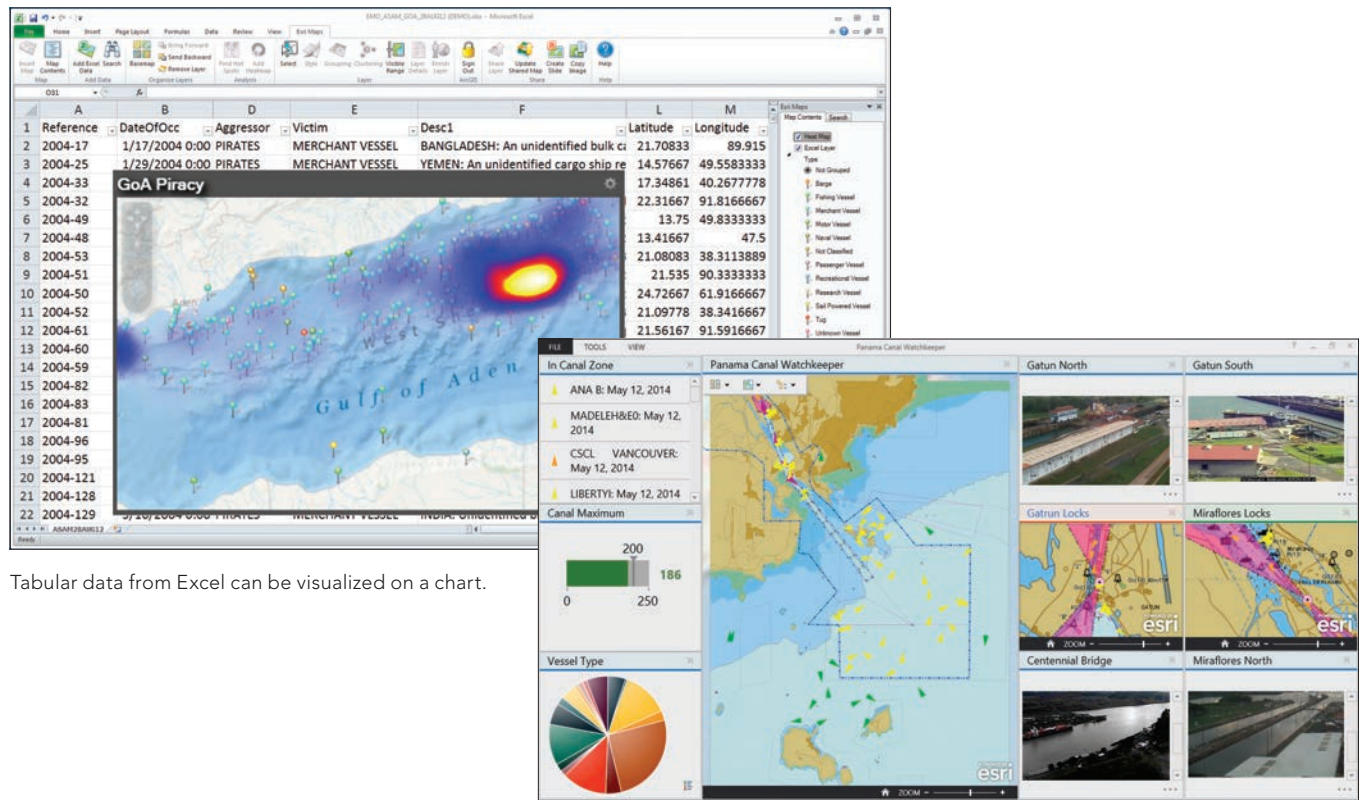
Naval units operate in remote places where self-sufficiency is critical. Making the best decisions requires bridging the gap between low-bandwidth and big data-driven environments. Open platforms, such as the ArcGIS® platform, deliver low-cost, plug-and-play capability for commanders to dominate maritime operations.

### Enable Self-Sufficiency

Cached data provides fast-rendering, easy-to-use maps and imagery during disconnected operations. With Esri® technology, warfighters can access geospatial data in familiar tools, including dashboards and Microsoft Office applications such as Excel and PowerPoint.

### Exploit Data

Various data types and formats can prevent essential analysis. As a result, many valuable data investments aren't exploited. Geoanalytics and visualization can transform raw intelligence into actionable intelligence. ArcGIS fills the critical gaps in geospatial analysis, preparing commanders for their maritime missions.



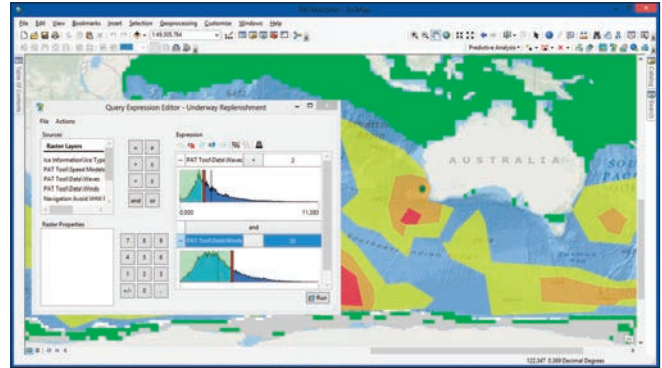
Tabular data from Excel can be visualized on a chart.

Use Operations Dashboard for ArcGIS to visualize data to make informed decisions.

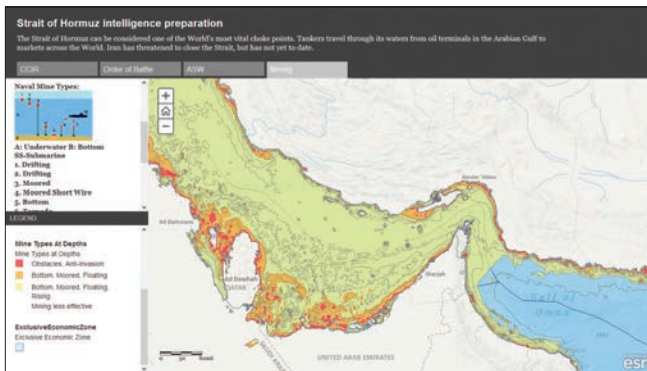


## Informed C2 Decisions

Optimizing the geographic dimension of operations empowers decision makers. ArcGIS helps commanders and their staff visualize patterns and trends in their data, accelerating and improving command and control (C2) decisions.



Time-enabled weather information is integrated into planning to answer operational questions.



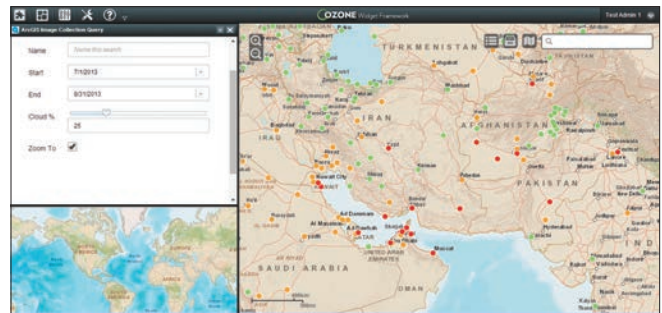
Exploit the geographic dimension of your operational data.

## Reduce Cost

An open platform provides the tools and templates needed to rapidly deploy map-based workflows across most coalition partners and systems. ArcGIS for the Military templates and apps are preconfigured, reducing the expense of training personnel and designing solutions from scratch.

## Stay Interoperable

Commanders need interoperable solutions to improve operational efficiency. Open architectures and standards ensure that data, processes, and people can be used to their fullest potential.



Interoperability is supported through common standards.



Understanding our world.

Learn more about ArcGIS for the Military—Maritime Operations at [solutions.arcgis.com/military/maritime-operations](https://solutions.arcgis.com/military/maritime-operations).