



INDUSTRY

User

Ordnance Survey Ireland (OSi)

Challenge

Launch a new online portal to make third-party, public sector data easily accessible to help drive the Irish economy.

Solution

OSi modernized its online mapping capability using Esri's ArcGIS® platform to share Irish government information.

Results

GeoHive delivers greater access to trusted information, promoting investments, saving money, and improving public services.

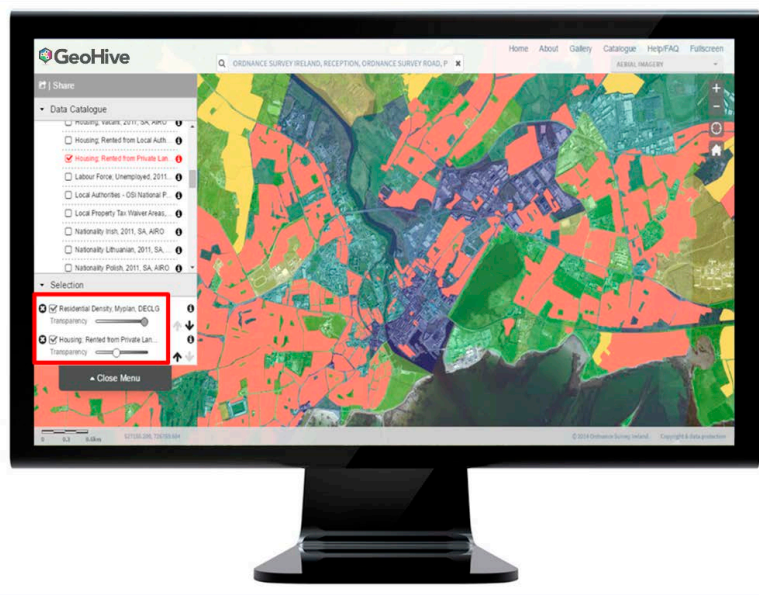
GeoHive Portal Opens Up Economic Opportunities for Ireland

Ordnance Survey Ireland (OSi) has launched a new online mapping service that helps unlock Ireland's vast reserves of geospatial data by making trusted, location-based information easy to find, interpret, and share from one place, using any device, for the first time. Called GeoHive, this free web app and web service is expected to support the recovery of the Irish economy and pave the way for public and private sector organizations to save millions of euros.

The Challenge

OSi, the national mapping organization of Ireland, understands the incredible value geospatial data can deliver for the Irish economy. In 2013, it commissioned an economic assessment of Ireland's geospatial industry. It concluded that better use of location-based information could lead to annual cost savings of €82m in the public sector, time savings with an economic value of €279m, and competition benefits of €104m. Inspired by these findings, OSi took the lead in making Ireland's vast geospatial data resources more widely available via the Internet.

OSi already had an online map viewer; however, the technology was outdated and couldn't deliver digital cartography to tablet and mobile devices. Therefore, OSi launched a new online portal to improve the user experience, making third-party public sector data easily accessible.



The Solution

A long-standing user of Esri® geographic information system (GIS) technology, OSi worked closely with Esri Ireland to modernize its online mapping capability, using Esri's ArcGIS® platform. GeoHive (www.geohive.ie) now delivers significantly enhanced facilities for users. "For the first time, users can access current and historical OSi maps on their mobile phones and tablets, whenever they need them," explains Hugh Mangan, general manager of business and marketing, OSi. Most importantly, GeoHive combines OSi mapping with data from a wide range of public sector partners to create an authoritative National Spatial Data Infrastructure. "GeoHive is unique in Ireland, as it combines over 142 layers of third-party data from 35 public sector bodies and presents them seamlessly to the end user from a single site," Mangan says.

For GeoHive, OSi used Esri's ArcGIS™ Online and Esri Story Map templates to publish curated content on specific topics. For instance, OSi built a map viewer for people buying residential properties that displays key considerations such as schools, the environment, transportation, employment, hospitals, and crime. The portal can also use the latest census data to conduct business analysis.

The Results

Launched in November 2015, GeoHive delivers the following: Greater access to trusted information, promoting investment decisions through GeoHive, OSi is able to expose many more individuals and organizations to the vast reservoirs of Irish geospatial data to uncover fresh insights and easily share them using mobile devices. GeoHive encourages new investments in Ireland, supporting its economic recovery. "If a business owner is considering opening a new office or factory in Galway, GeoHive presents all the information needed to understand the area and make informed decisions," Mangan says.

OSi is confident that GeoHive will unlock the significant cost savings and benefits identified in its economic assessment of Ireland's geospatial industry. According to OSi's chief executive, Colin Bray, "By making location-based data more accessible, usable, and meaningful for everyone, GeoHive will help public and private sector organizations reduce costs, save time, and capitalize on new business opportunities."

GeoHive enables all participating public sector organizations to deliver better customer service by making their data widely accessible to a larger number of potential users.

"ArcGIS has enabled OSi to deliver a service that has the potential to really boost the value of geospatial data to the Irish economy."

Colin Bray
Chief Executive
Ordnance Survey Ireland



esri.com/national-mapping