

# ArcGIS Provides Enterprise Image Management

## Maximizing the Value of Your Imagery

**Make the most of your imagery investment with ArcGIS.**

### Supports Large Volumes

**Challenge:** Very large volumes of imagery are being acquired.  
**Solution:** ArcGIS manages and serves large catalogs of imagery with a high-performance scalable architecture.

### Provides Accessibility

**Challenge:** Many users require fast access to imagery.  
**Solution:** ArcGIS makes imagery accessible quickly to a large range of GIS, CAD, imaging, and Web applications.

### Supports Many Formats

**Challenge:** Imagery comes in multiple formats, projections, pixel types, and resolutions from multiple sources.  
**Solution:** ArcGIS directly supports all image formats, dynamically mosaicking different images to the specified output without requiring preprocessing.

### Supports Dynamic Image Processing

**Challenge:** Different users within organizations need to exploit different information from imagery.  
**Solution:** ArcGIS provides on-the-fly server-based image processing to serve multiple imagery products from the same source.

### Preserves Information Accuracy

**Challenge:** Static mosaics created from overlapping imagery lose valuable information and metadata.  
**Solution:** By dynamically mosaicking imagery, ArcGIS enables users to leverage the overlap in space and time and gain valuable information. Confidence in the imagery is increased through access to the source metadata.

### Enables Interoperability

**Challenge:** Enterprises require support for multiple systems and applications.  
**Solution:** ArcGIS provides a service-oriented architecture and supports all common IT and geospatial standards, including WMS, WCS, KML, SOAP, and REST.

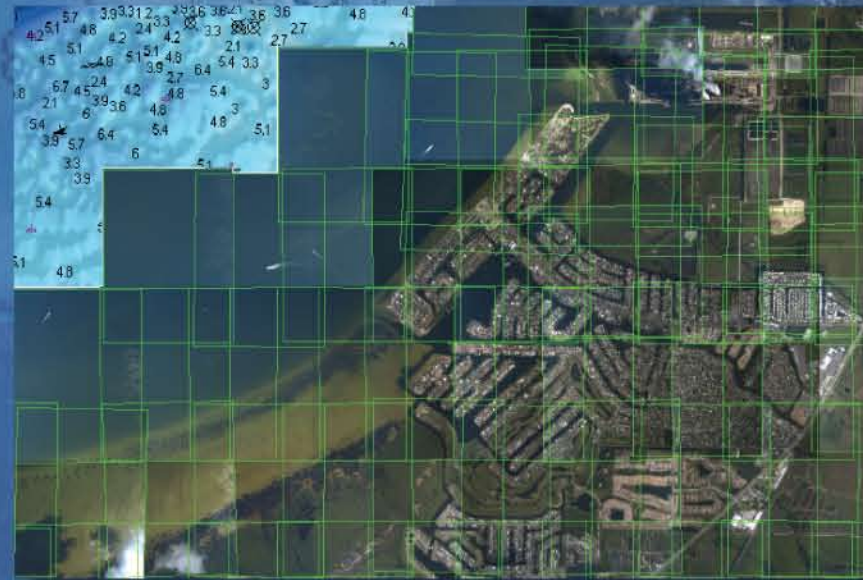
### Creates Return on Image Investment

**Challenge:** Imagery acquired and not accessed loses value quickly.  
**Solution:** ArcGIS provides immediate return on image investments by making imagery accessible to end users and reducing the time between acquisition and use.

### Integrates with Many Image Analysis Systems

**Challenge:** Imagery can be exploited by many specialized technologies.  
**Solution:** ArcGIS works with the leading image processing and analysis solutions.

ArcGIS helps organizations manage large catalogs of rasters and imagery from various sources, as well as integrate and exploit this data with all other types of geospatial data.



**Collect** large volumes of imagery and use them in their native format.  
 Tampa, Florida, courtesy of Applanix



**Manage** catalogs of imagery, processing parameters, and metadata.  
 Darfur, Sudan, courtesy of Digital Globe

### Image Management Workflows



ArcGIS is a complete image management system supporting enterprise workflows.



**Produce** dynamic image products using server-based processing.  
 False color, courtesy of Digital Globe



Normalized Difference Vegetation Index (NDVI), courtesy of Digital Globe

Color Infrared (CIR)  
 Tampa, Florida

**Exploit** the full information content of geospatial imagery in multiple applications.

- Rich Data Model
- Powerful Tools
- Strong Architecture
- Scalable/High Performance
- Standards Based



Dynamically mosaicked and reprojected multitemporal imagery, courtesy of USDA NAIP



Image service integrated with parcel data, courtesy of City of Ft. Pierce, Florida



ArcGIS is a complete geographic information system that provides powerful data management, analysis, and visualization capabilities. Image management, processing, and dissemination of geospatial information are core components of this system.

Learn more about ESRI's Enterprise Image Management System at [www.esri.com/imagery](http://www.esri.com/imagery)