

It's Easier to Share Geographic Information

With new release of ArcGIS Explorer

New updates to ArcGIS Explorer, the free GIS viewer, help more closely integrate it with ArcGIS 10. It now provides direct support for image services, improved support for ArcGIS 10 layer packages and geodatabases, and more ways to leverage ArcGIS 10.

The new release supports greater interoperability with ArcGIS. Image services can be directly used and optimized. New tools and properties for image services include gamma, brightness, and contrast; compression and resample methods; and mosaic methods and operators. Image services can also be added as elevation layers.

With direct access to ArcGIS Online, ArcGIS Explorer users can easily find and add content and share geographic data and maps

through online communities. OpenStreetMap is now included in the ArcGIS Explorer basemap gallery. More data sources can be used in ArcGIS Explorer. In this new version, data from Excel spreadsheets can be added.

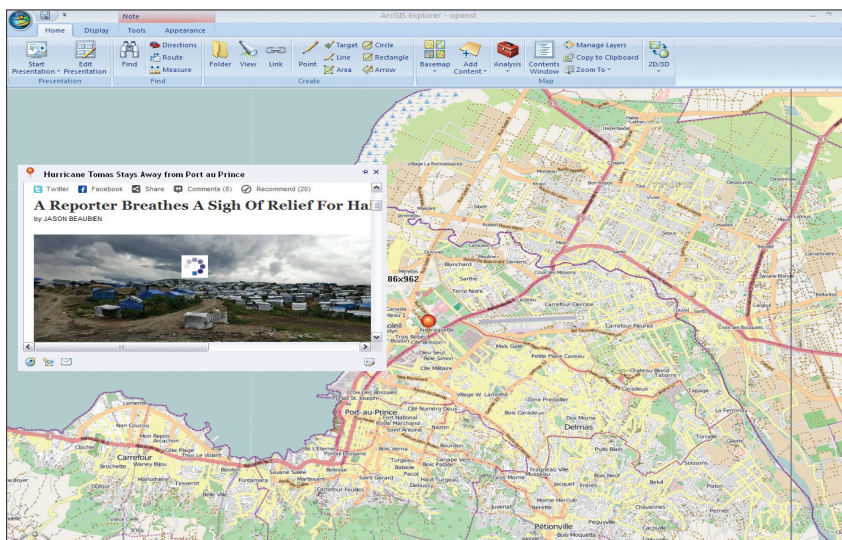
Enhanced features in ArcGIS Explorer make collaboration easier. Notes, a pop-up window associated with a shape drawn on the map, now displays a title as well as text. The presentation, pop-up, and Analysis Gallery features have new tools for sharing information. Shared layer packages, notes, and KML can be saved locally, added to ArcGIS Online, or e-mailed directly from ArcGIS Explorer.

Users can also share notes as Keyhole Markup Language (KML)

and convert KML to notes. KML handling has been improved in both the 2D and 3D modes, and regionated KML is now supported in 2D mode. (Regionated KML is a format that breaks an image file into tiles, or regions, that are easier to deliver than one large file.)

With the new query capability, users can create expressions to filter the data displayed. Symbology has been improved for both 2D and 3D modes.

In addition to the free download of ArcGIS Explorer, Esri offers a free ArcGIS Explorer software developer kit (SDK). This SDK has been updated to support Visual Studio 2010, including templates for the new add-in types and an updated add-in wizard. The reference and conceptual help have also been updated, and new/updated SDK samples are included. ArcGIS Explorer is supported in English, German, French, Spanish, Japanese, and simplified Chinese.



With the new release of ArcGIS Explorer, OpenStreetMap is included in the basemap gallery, and notes now have titles.

Efficient Enterprise Collaboration through Custom Web Applications

Esri Business Analyst Server 10 significantly speeds analysis tasks such as data summarization, benchmarking, and market ranking. These tasks can be done almost instantaneously—in less than a second in some cases.

This recent release improves collaboration and sharing of business models and analyses across the enterprise. Business Analyst Server combines GIS server technology with extensive business, updated demographic, and consumer spending data from Esri. Results of analyses can be shared through print-quality maps and reports that can be incorporated into market studies and distributed in ready-to-use, browser-based applications.

Business Analyst Server comes with out-of-the-box tools and services for rapidly publishing and sharing data, maps, analyses, and models. Software developer kits (SDKs) for Flex and Silverlight, in addition to REST and SOAP API services, are included. Application developers can quickly build easy-to-use Web applications that help end users solve site location problems, perform customer targeting, and do other types of analysis within a standard Web browser. End users don't have to be GIS experts.

To learn more about Business Analyst Server, visit esri.com/baserver. International customers should contact their local distributor for more information.