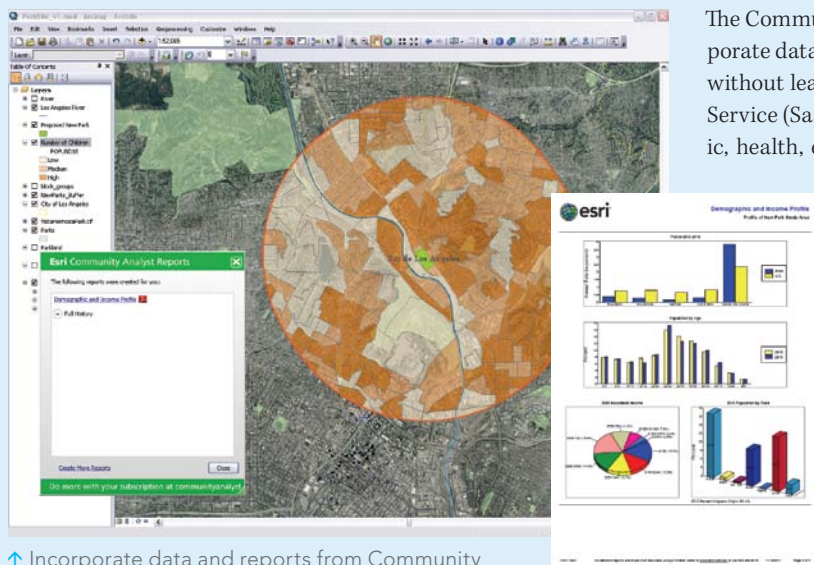


Community Analyst on Your Desktop

Integrate data and reports using the add-in



↑ Incorporate data and reports from Community Analyst without leaving ArcMap.

The Community Analyst Add-in lets ArcGIS for Desktop users incorporate data and reports available from Community Analyst directly without leaving ArcMap. Community Analyst, Esri's Software as a Service (SaaS) mapping solution, provides thousands of demographic, health, economic, education, and business data variables, combined with instant reports and interactive color-coded maps, and can help evaluate community needs, plan for growth, and allocate resources. With the Community Analyst Add-in, users can generate reports for features created in ArcGIS for Desktop and access the latest data from Esri and append it to feature attributes in ArcGIS.

Get started right now by downloading the free add-in for ArcGIS for Desktop from esri.com/caaddin, installing it, and activating it. A free 30-day trial of the Community Analyst Add-in is available to ArcGIS for Desktop users. After the trial expires, users can purchase an annual subscription.

Making GIS Available to Everyone

Enhance your skills with the Home Use program

ArcGIS for Home Use makes GIS available to everyone. If you are an existing ArcGIS user, you can use the same powerful software you use at work at home for noncommercial personal use. ArcGIS for Home Use is great way to expand your GIS skills. For a \$100 annual fee, the ArcGIS for Home Use 12-month term license includes

- ArcView
- ArcGIS 3D Analyst
- ArcGIS Data Interoperability
- ArcGIS Geostatistical Analyst
- ArcGIS Network Analyst
- ArcGIS Publisher
- ArcGIS Schematics
- ArcGIS Spatial Analyst
- ArcGIS Tracking Analyst

The ArcGIS for Home Use program is available worldwide to anyone. Tutorials for ArcGIS 10 are available online at help.arcgis.com. Esri also offers free and paid training. Find a course today at esri.training.com. ArcGIS for Home Use can be purchased online in the United States. Outside the United States, contact the local Esri distributor.