

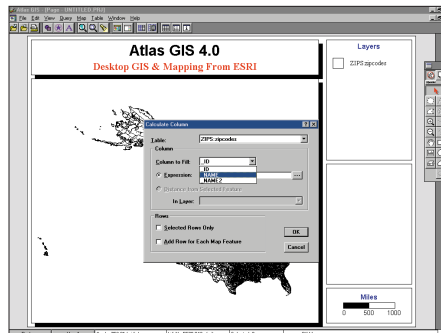
Atlas GIS 4

Linking Database and Geo Files

By Linda Schmidt, ESRI Technical Support

When shapefiles from the ESRI Data & Maps CD-ROM are converted to geo files (.agf files), the number in the _ID field is arbitrary and may not be useful for linking to data you have in a .dbf file. In this example the _ID field for the .agf file, created by converting from the zip_poly.shp, will be filled with ZIP Code information so it can be linked to another .dbf file.

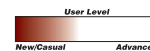
1. Link the converted zip_poly.dbf file to the zip_poly.agf file, if they are not already linked. The table will already be linked after the shapefile is converted to an .agf file.
2. Choose Table>Calculate Column from the menu.
3. In the Calculate Column dialog box



Use Calculate Column from the Table menu to fill in ZIP Code information so a converted geofile can be linked to a database file.

choose _NAME as the Column to Fill. Make sure the _NAME column is empty or that it can be overwritten.

4. Click on the radio button next to Expression and choose _ZIP. Click on OK. You should see ZIP Code data in the _NAME field.
5. Unlink zip_poly.dbf file and zip_poly.agf. The _ID field cannot be overwritten if the .agf file is linked to a .dbf file.
6. Choose Table>Calculate.
7. In the Calculate Column dialog box, choose _ID as the Column to Fill. Make sure the _ID column is empty or that it can be overwritten.
8. Click on the radio button next to Expression and choose _NAME. Click on OK. You now have ZIP Code information in the _ID column of the .agf file. This file can be used to link to data in .dbf files. **AU**



ArcView GIS

Limiting Access to One User at a Time

By Mike Jensen, ESRI Technical Support

If your project (.apr) files are stored on a network drive, you may run into problems if you open and update a project file at the same time another user is making changes to it. To prevent this you may want to restrict access to project files to one user at a time. Start-up and shutdown Avenue scripts, available for download from the *ArcUser Online* Web site, will allow you to do that.

Creating the Start-up Script

1. Start ArcView GIS and open the project to be modified.
2. Open a new script window and choose Script>Properties to rename it aStartup.
3. Copy and Paste or type the following code downloaded from *ArcUser Online* into the new script window.
4. Compile the Script by clicking on the check mark button, **but do not run it yet.**

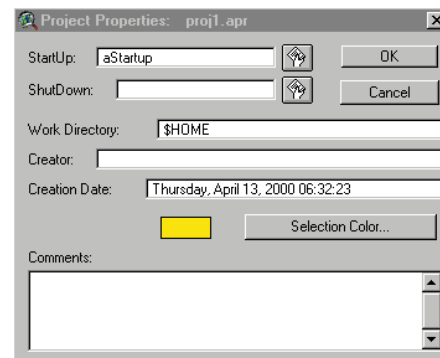
Creating the Shutdown Script

1. Go to the Script menu and select Embed Script.
2. Open another Script window and rename it aShutdown.
3. Copy and Paste or type the following code into the new script.
4. Compile the Script by clicking the checkmark button **but do not run it yet.**

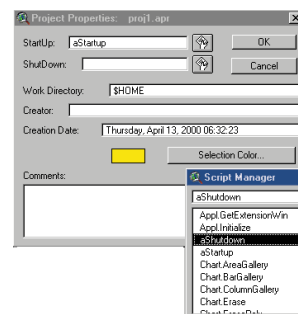
Adding the Scripts

1. Go to the Script menu and select Embed Script.
2. Make the Project window active.
3. Choose Project>Properties from the menu bar to invoke the Project Properties dialog box.
4. In the Project Properties dialog box, click on the Script Manager button next to the Startup text box. Scroll through the scripts and select the aStartup script and click on OK.
5. Still in the Project Properties dialog box, click on the Script Manager button next to the Shutdown text box. Scroll through the scripts and select the aShutdown script and click on OK.
6. Save the project.
7. Close the project or exit ArcView GIS.

The next time the project opens, the new start-up script will generate a text file that prevents the project from being opened by anyone else and generates a warning message to additional users. The text file resides in the same directory as the project. The new shutdown script will remove the text file after the project has been saved and closed. **AU**



Make the Project window active and choose Project>Properties to invoke the Project Properties dialog box.



In the Project Properties dialog box, click on the Script Manager buttons next to the StartUp and ShutDown text boxes to access the aStartup and aShutdown scripts previously created.

