

You Can Take It with You

Save locations in My Places

By Monica Pratt, ArcUser Editor

With ArcGIS 9.2, you can create a list of your most frequently visited places and use them in all your ArcMap and ArcGlobe documents. These places can be addresses, places found using the gazetteer, individual features, or spatial extents.

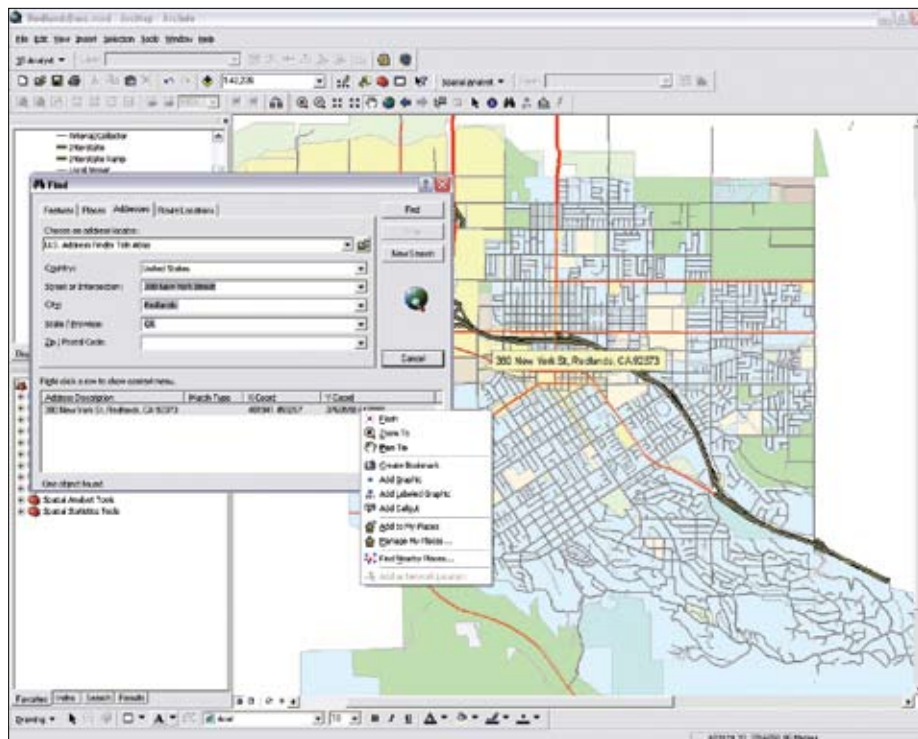
Unlike Bookmarks, My Places locations are not specific to a document or data frame but to the user. They are available regardless of the map used because My Places information is stored in C:\Documents and Settings\\Application Data\ESRI\Controls\Commands\MapNavigation\myplaces.dat. Access My Places by choosing Tools > My Places from the Standard ArcMap toolbar.

Managing Locations in My Places

Locations can be added to My Places in several ways. Clicking the Find button in the My Places dialog box launches the Find tool. Using the Find tool, you can search for features in the current map document, places using the ESRI World Gazetteer, addresses using one of several address locators, or route locations from existing routes. Right-clicking on the feature, place, address, or route location that has been found lets you add it to My Places. Multiple features found in one search can be added in a single operation by holding down the Control key and clicking on them. Each feature will be added to My Places as a separate item.

Alternatively, selected features in a map document can be added by choosing My Places from the toolbar, clicking the Add From button, and choosing Selected Feature(s). Hold down the Shift key while clicking to select multiple locations in the list. Hold down the Control key while clicking to select nonadjacent locations. Multiple selected features, added in one operation, will be displayed as separate features in My Places. A map extent in ArcMap can also be saved by zooming to the desired extent, invoking My Places, and choosing Current Extent from the Add From button drop-down.

In the My Places dialog box, saved locations are displayed with icons and names. Location names can be modified by right-clicking on the name and choosing Rename or by simply clicking twice on the name and typing a new name. Sort locations by clicking on the Type



Locations can be added to My Places using the Find tool.



The buttons in the My Places dialog box help create, manage, and share My Places locations.

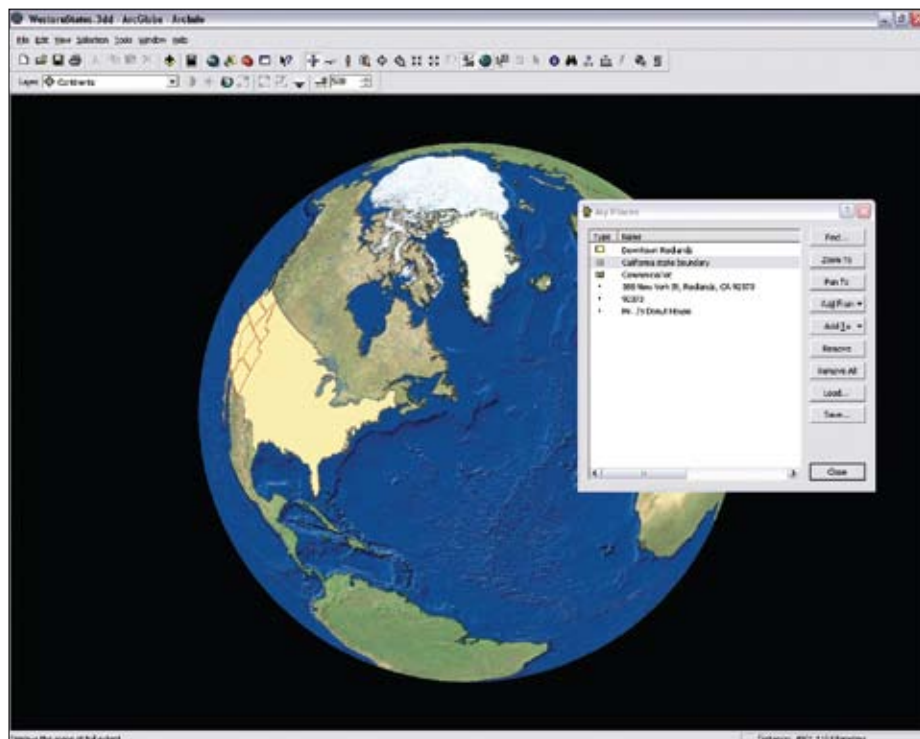


Right-clicking on a location in My Places invokes a context menu with navigation, display, and other choices.

or Name headings.

Places can be saved or removed. Select a location and click the Save button to save all locations in My Places in a .dat file. Click the Remove button to eliminate that location

or click the Remove All button to remove all locations in one operation. Click Load to load a saved .dat file into My Places.



Locations saved in ArcMap can be used in an ArcGlobe document. The icon by each location indicates its type.

Using My Places

In both ArcMap and ArcGlobe, check a location saved in My Places by double-clicking on the item in the My Places dialog box or right-clicking on the item and choosing Flash from the context menu. With My Places, quickly navigate to commonly used locations in maps or globes—features, places, addresses, or extents—by double-clicking on a location to pan to it. Right-click on saved locations in My Places and choose the Zoom To or Pan To commands from the context menu.

In ArcMap, other choices available by right-clicking on a saved location include adding the location as a graphic, a labeled graphic, or a callout graphic. This is a quick way to annotate a map with a specific location in one step. You can also use the Add To button to use the place in a route or with ArcGIS Network Analyst.

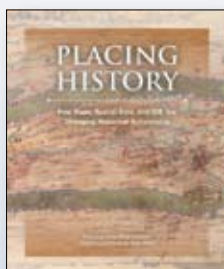
Sharing My Places

My Places locations saved in a .dat file can be shared with other users. For example, e-mail a list of point locations without having to send a shapefile or geodatabase. Note that only the location coordinates and a label, if it was added, are saved in the My Places files. Attribute or symbology information is not supplied. Making a .dat file accessible from a network location can let team members access location information for a common set of places, such as study areas, on all the machines in a workgroup.

A place based on a graphic can also be saved in My Places and added to other maps. Select a graphic on the map, click the Add From drop-down, and choose Selected Graphics. On other maps containing the same coordinates, the graphic can be displayed and added to the map.

The My Places tool is one of the many productivity enhancements made to ArcGIS 9.2. Along with custom extents and the ability to navigate map documents using the mouse wheel, the My Places tool helps you more easily navigate around a map and share coordinate data with others.

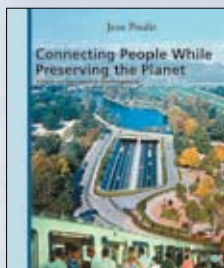
New Books Explore GIS in History and Transportation



Placing History: How Maps, Spatial Data, and GIS Are Changing Historical Scholarship

Edited by Anne Kelly Knowles
\$49.95

Historians and researchers increasingly use GIS technology to study the past. This book offers case studies and essays about how this versatile tool for communication and analysis is used to visualize historical information in a geographic context.



Connecting People While Preserving the Planet: Essays on Sustainable Development

Jean Poulit
\$29.95

A leading French authority on transportation, Jean Poulit provides his philosophical insights, professional observations, calculations, and personal review of urban planning research. It is a must-read for GIS users and urban planning experts who wish to round out their knowledge of these issues.

To purchase these books and other ESRI Press titles, visit www.esri.com/esripress or call 1-800-447-9778.



ESRI
PRESS

Copyright © 2007 ESRI. All rights reserved.