

Esri News

for Petroleum

Winter 2012/2013

National Database under Construction

By Barbara Shields, Esri Writer

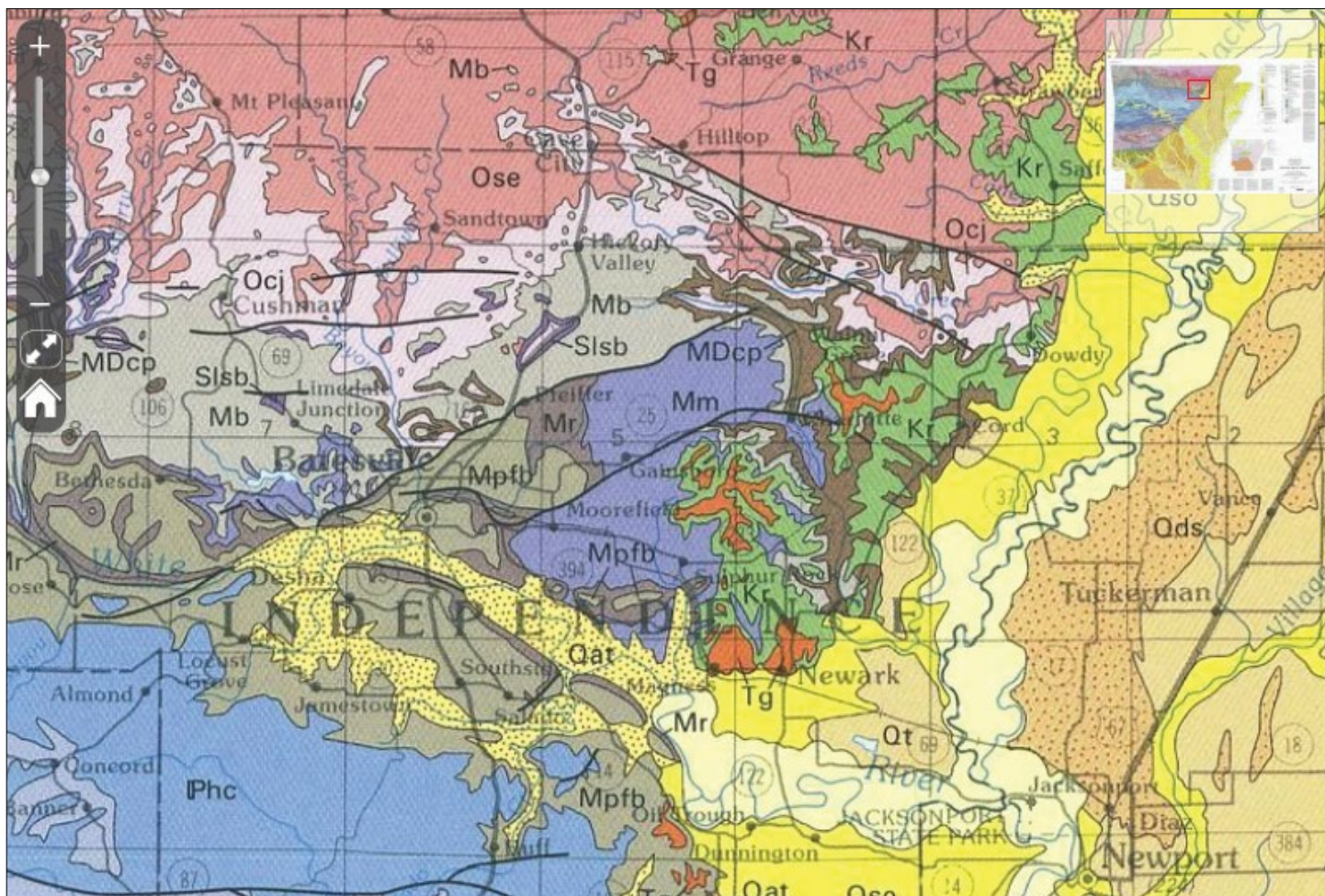
Since its beginning in 1995, the US Geological Survey's (USGS) National Geologic Map Database (NGMDB) project has evolved into a highly respected geoscience resource. Furthermore, its impact on the evolution of digital geologic mapping standards and guidelines, in the United States and internationally, has been highly significant. The NGMDB

is undergoing a reconstruction of its infrastructure that will make the database easier to search and to view.

Users can search more than 88,000 maps and reports provided by 600 publishers via MAPVIEW. The interface makes it easy to see geologic data as newest, bedrock, and surficial. Users can view data in detail and download it from the various publishers

that contribute to the database. MAPVIEW is built using Esri ArcGIS for Server and ArcGIS Image Extension for Server.

See MAPVIEW at ngmdb.usgs.gov.



↑ The USGS map service accesses a map showing the geology of Arkansas.



Visit esri.com.

Copyright © 2014 Esri. All rights reserved. Esri, the Esri globe logo, ArcGIS, and esri.com are trademarks, service marks, or registered marks of Esri in the United States, the European Community, or certain other jurisdictions. Other companies and products or services mentioned herein may be trademarks, service marks, or registered marks of their respective mark owners.