

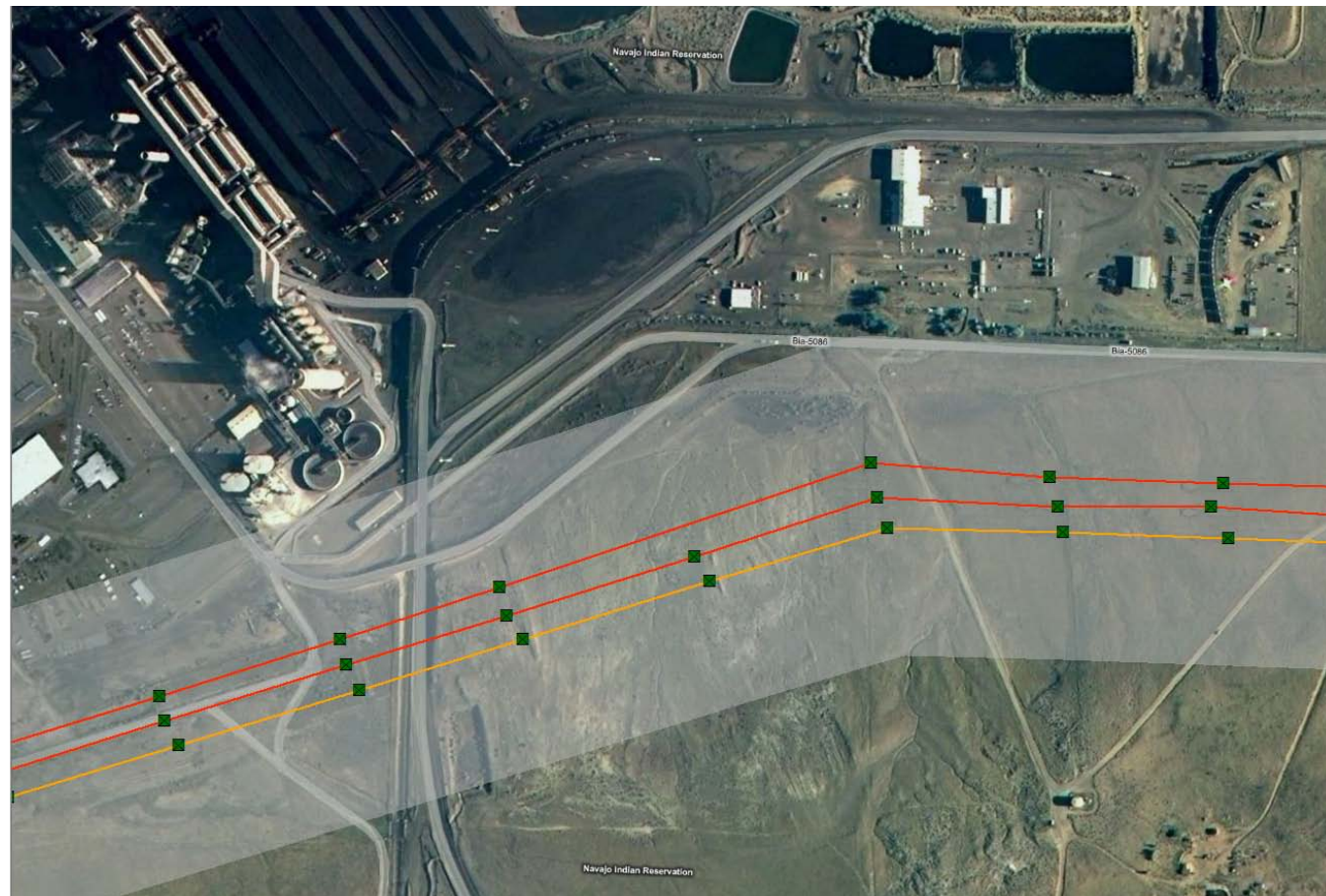


# Esri® Technology for Electric Transmission



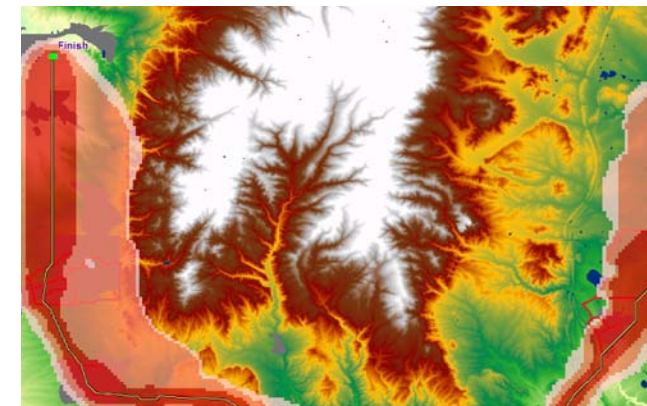
# Transforming Your Utility

Esri helps you answer questions and solve problems. You transform your utility operations when you can quickly query, analyze, and understand your data. Esri provides a complete system that allows you to integrate disparate data, access and update information from the office or the field, and maintain a real-time view of all operations. More than maps and applications, Esri gives you the location analytics you need to save time, lower costs, and satisfy customers.



## Data Management

Manage and map the precise locations of overhead and underground circuits. Maintain the highest possible data accuracy. Link utility assets directly to other systems, such as customer information, so you can proactively monitor work orders, vegetation management, and outages.



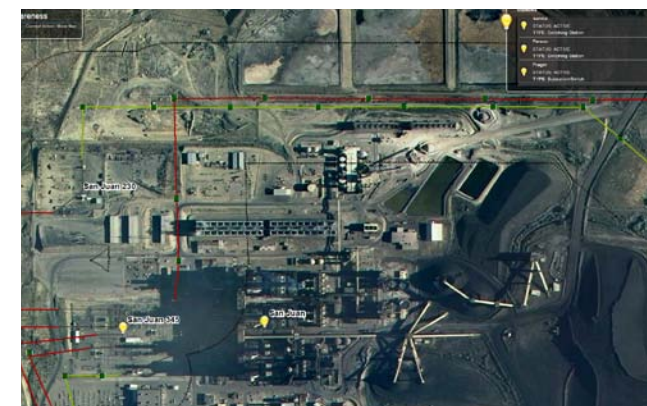
## Planning and Analysis

Identify the vulnerabilities that cause outages by pulling information from all available location-based data. Weigh and analyze asset investments. Understand customer satisfaction better. Model routes and determine rights-of-way that demonstrate respect for the land and landowners. Manage assets and vegetation while ensuring regulatory compliance.



## Work Force Automation

Use street-level routing and analytic tools to schedule and dispatch utility service staff for maximum efficiency. Reduce fleet costs and gain additional scheduling time so your utility can handle more service calls. Monitor the location and progress of crews working in the field. Improve communication between the office and field with mobile and cloud-based applications.



## Situational Awareness

Use maps and reports to quickly demonstrate how your utility is meeting compliance requirements or responding to large outages. Identify where money is spent. Monitor all utility operations with a user-friendly executive dashboard. Keep the public informed with web-based applications and viewers.

Read case studies, explore options, and connect with an expert at [esri.com/electric](https://www.esri.com/electric).



Understanding our world.

Esri inspires and enables people to positively impact their future through a deeper, geographic understanding of the changing world around them.

Governments, industry leaders, academics, and nongovernmental organizations trust us to connect them with the analytic knowledge they need to make the critical decisions that shape the planet. For more than 40 years, Esri has cultivated collaborative relationships with partners who share our commitment to solving earth's most pressing challenges with geographic expertise and rational resolve. Today, we believe that geography is at the heart of a more resilient and sustainable future. Creating responsible products and solutions drives our passion for improving quality of life everywhere.



## Contact Esri

380 New York Street  
Redlands, California 92373-8100 USA

1 800 447 9778  
T 909 793 2853  
F 909 793 5953  
info@esri.com  
[esri.com](http://esri.com)

Offices worldwide  
[esri.com/locations](http://esri.com/locations)

Copyright © 2012 Esri. All rights reserved. Esri, the Esri globe logo, @esri.com, and esri.com are trademarks, service marks, or registered marks of Esri in the United States, the European Community, or certain other jurisdictions. Other companies and products or services mentioned herein may be trademarks, service marks, or registered marks of their respective mark owners.