

Esri® Technology for Law Enforcement

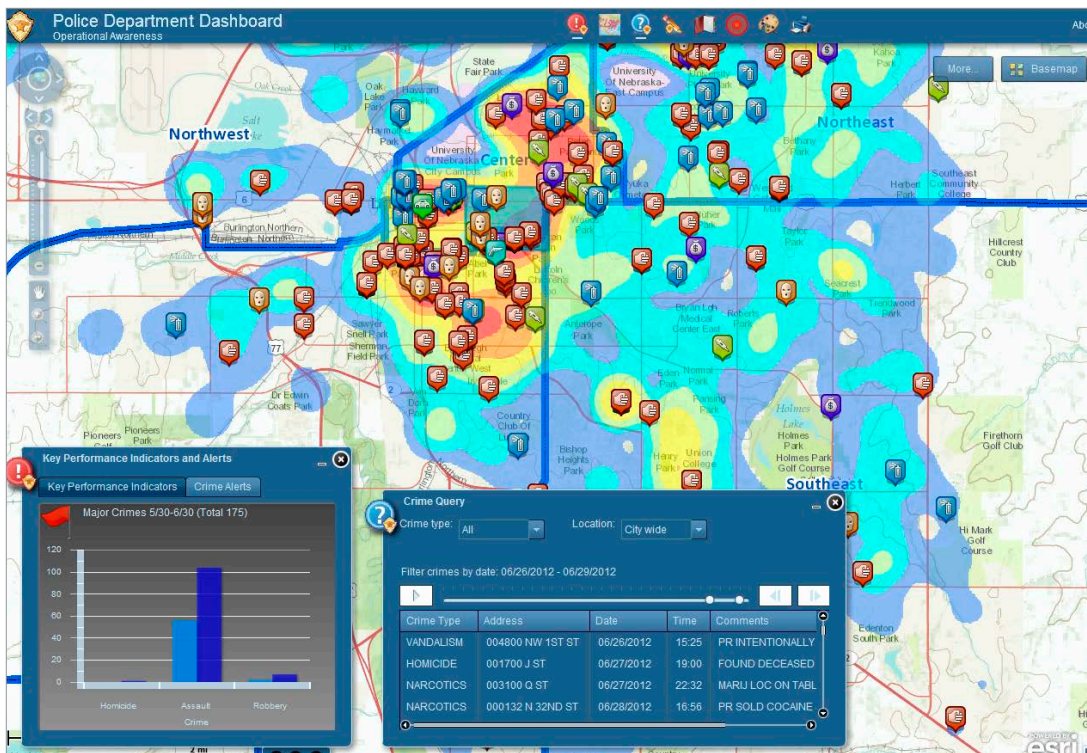
Transform Data into Intelligence



Esri® Technology—Smarter Policing

Your budgets have tightened. Your demands have grown. Has your capability increased?

In today's law enforcement environment, catching criminals isn't enough. You need smarter planning. You need smarter investigations. You need smarter response. Esri has the tools, technology, and expertise to deploy true intelligence-led policing. You can use location-based analytics and mapping intelligence to do more than catch criminals. You can predict where crime will occur and ensure that you have the right resources in the right place at the right time. With Esri as your partner, you'll turn data assets into crime-fighting weapons.



Enable Smart Decisions

Anticipating and responding to crime requires law enforcement agencies to overcome data deluge-induced barriers. They need to make information actionable and shareable. Esri partners with you and not only offers software

and services but also maintains an active community of law enforcement users, partners, and workgroups that are immediately available to help you succeed. You can leverage proven technology and best practices to meet the mission.



Empower Organizational Capabilities

Esri supplies a scalable integration platform that meets your needs—no matter your size or budget. What does this mean? Simply put, your vast resources—such as RMS, CAD, AVL, live video, and social feeds—become useful to everyone. From the police chief to the patrol officer, Esri gives law enforcement complete situational awareness that can be shared via the desktop, within the cloud, or on mobile devices.

Deploy Intelligence-Led Policing

Esri gives you high-end analysis that's immediately actionable. You'll visualize information to make connections and identify patterns. Personnel can be deployed to the areas where they are needed most, based on the data. Historical and current crime data can quickly and easily be examined to predict crime spikes and identify trends as they develop. Police can engage the community through online web maps that allow citizens to see what's happening in their neighborhoods.

Esri Technology Enhances Organizational Capabilities

- Effectively allocates scarce resources
- Supports mission workflows through tools, software, applications, and platforms
- Optimizes data integration
- Facilitates information sharing
- Improves situational awareness

Esri Technology Facilitates Intelligent Policing

- Crime analysis and forecasting
- Real-time crime centers
- Computer statistics (CompStat)
- Officer and community safety and accountability
- Community policing/Information sharing

Learn More about GIS for Law Enforcement
[go.esri.com/lawenforcement.](http://go.esri.com/lawenforcement)



Esri inspires and enables people to positively impact their future through a deeper, geographic understanding of the changing world around them.

Governments, industry leaders, academics, and nongovernmental organizations trust us to connect them with the analytic knowledge they need to make the critical decisions that shape the planet. For more than 40 years, Esri has cultivated collaborative relationships with partners who share our commitment to solving earth's most pressing challenges with geographic expertise and rational resolve. Today, we believe that geography is at the heart of a more resilient and sustainable future. Creating responsible products and solutions drives our passion for improving quality of life everywhere.



Contact Esri

380 New York Street
Redlands, California 92373-8100 USA

1 800 447 9778
T 909 793 2853
F 909 793 5953
info@esri.com
esri.com

Offices worldwide
esri.com/locations

Copyright © 2017 Esri. All rights reserved. Esri, the Esri globe logo, @esri.com, and esri.com are trademarks, service marks, or registered marks of Esri in the United States, the European Community, or certain other jurisdictions. Other companies and products or services mentioned herein may be trademarks, service marks, or registered marks of their respective mark owners.