



Esri Technology for Emergency Management



esri

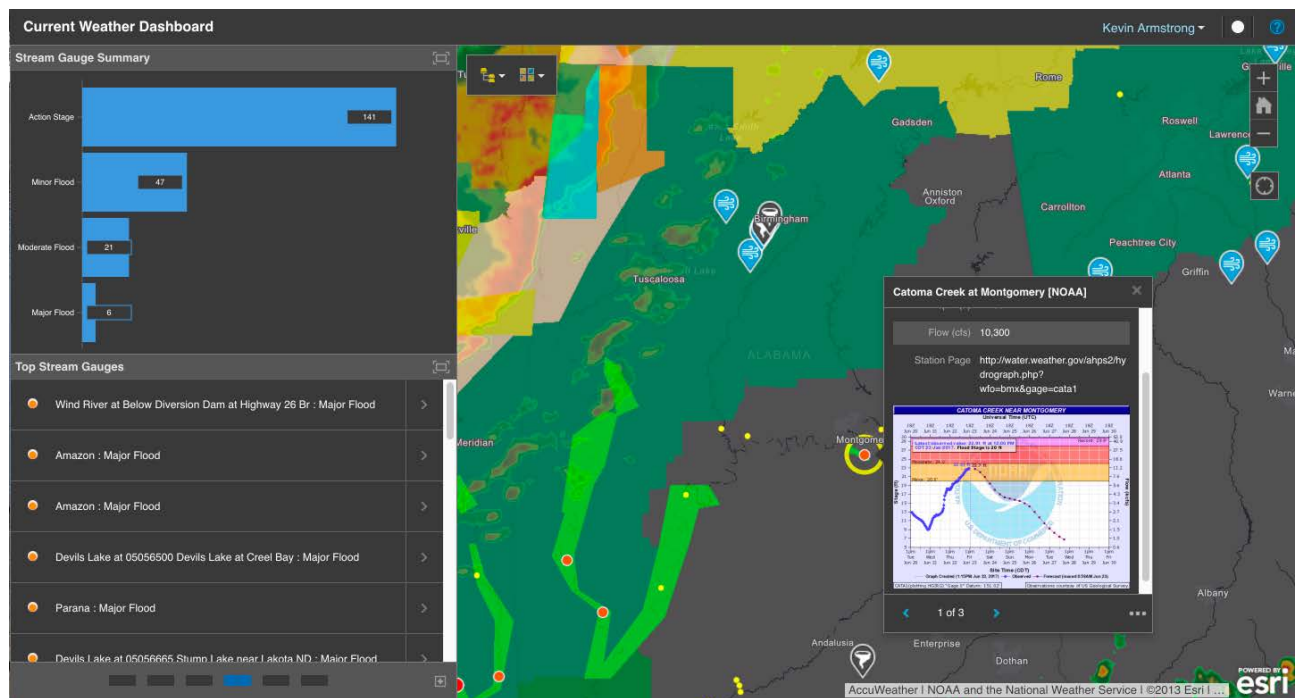
THE
SCIENCE
OF
WHERE™

Are You Prepared for Any Challenge?

Software, Services, and Expertise

Every day you are faced with increasingly complex challenges. Esri uniquely supports emergency management through its software, services, and expertise. Agencies around the world successfully deploy Esri® solutions for all types of disasters. You can use high-powered location analytics and visualization to build a foundation of preparedness that supports better decisions in mission-critical environments. With Esri's proven track record, you can achieve cost savings through greater operational efficiency and meet those challenges every day.

This adds up to a more effective response and opens up a global community addressing similar challenges.

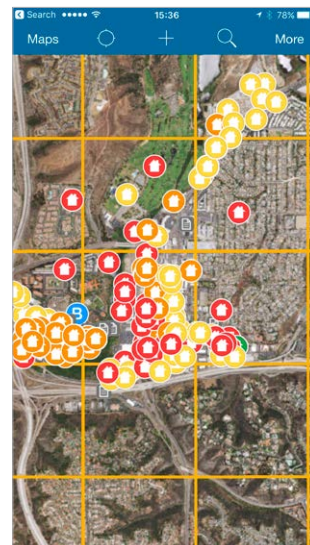


Support for Every Mission

Easily configurable mission focused applications allow you to see the right information, the right way, at the right time. Esri technology-based tools allow planners to plan more effectively, responders to respond more quickly, and recovery personnel to more efficiently apply limited resources. This improves your ability to rapidly coordinate efforts and communicate when disaster strikes.

Esri improves organizational workflows for

- Enabling situational awareness.
- Sharing information to personnel in the field.
- Briefing internal and external stakeholders.



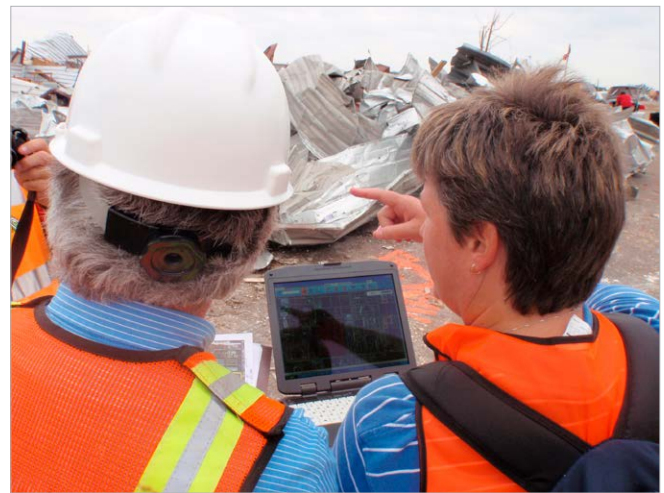


A Complete Platform

Your challenge requires more than what a static map provides. Esri's ArcGIS® platform gives you scalable technology that works on-site, within the cloud, and in the field. It delivers real-time content and analysis when and where they are needed, using simple applications. Enable collaboration and information sharing across your organization and among your partners at all levels for a more coordinated effort.

Esri Technology for a Global Community

Esri is the geographic information system (GIS) market leader. Esri software is in use every day around the world by agencies preparing for and responding to crises of all sizes. You'll be able to immediately connect with a global network of partners and users to share, collaborate, and learn. You'll also have access to best practices and proven strategies that can help you achieve mission success under any circumstances.



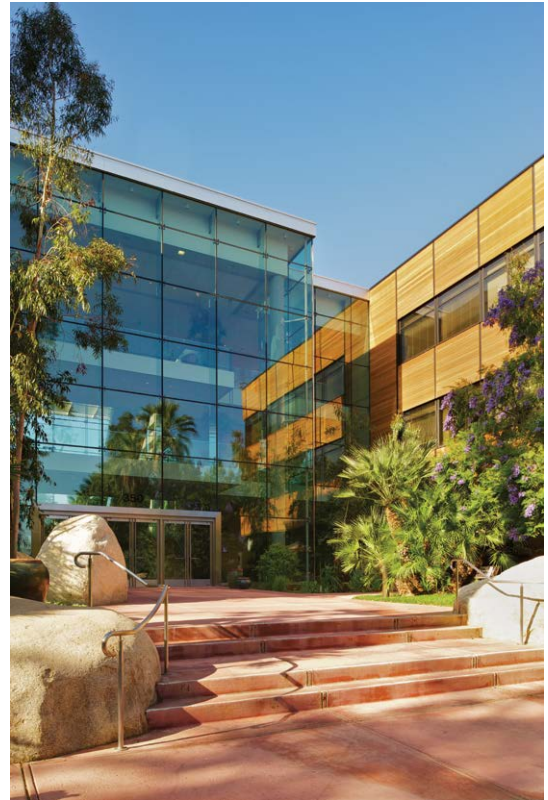
Learn more about implementing the Esri platform for emergency management at go.esri.com/em-brochure.



Esri, the global market leader in geographic information system (GIS) software, offers the most powerful mapping and spatial analytics technology available.

Since 1969, Esri has helped customers unlock the full potential of data to improve operational and business results. Today, Esri software is deployed in more than 350,000 organizations including the world's largest cities, most national governments, 75 percent of Fortune 500 companies, and more than 7,000 colleges and universities. Esri engineers the most advanced solutions for digital transformation, the Internet of Things (IoT), and location analytics to inform the most authoritative maps in the world.

Visit us at esri.com.



Contact Esri

380 New York Street
Redlands, California 92373-8100 USA

1 800 447 9778
T 909 793 2853
F 909 793 5953
info@esri.com
esri.com

Offices worldwide
esri.com/locations

Copyright © 2017 Esri. All rights reserved. Esri, the Esri globe logo, The Science of Where, ArcGIS, @esri.com, and esri.com are trademarks, service marks, or registered marks of Esri in the United States, the European Community, or certain other jurisdictions. Other companies and products or services mentioned herein may be trademarks, service marks, or registered marks of their respective mark owners.