

Managing Government Fleets and Mobile Workforces with GIS



The Geographic Advantage™

Use GIS to Accelerate Logistics

Do more with the staff and assets you already have.

Governments across the world use geographic information system (GIS) technology to effectively manage operations and improve business functions such as asset management, public outreach, and regional coordination. GIS is also a powerful tool for improving logistics, an important component in a strong enterprise.

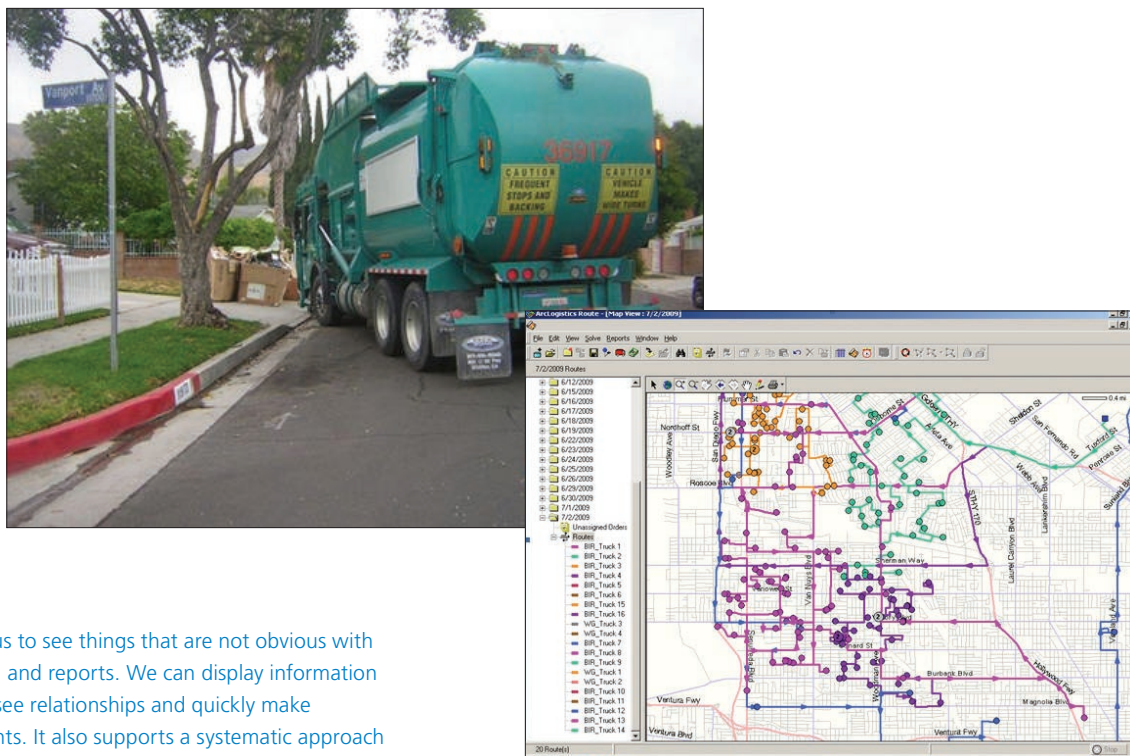
As budgets continue to tighten, use GIS to make the most of your organization's resources. Your staff is in the field each day maintaining infrastructure, visiting businesses, and working with citizens. GIS can ensure they are moving efficiently through the community.

ESRI's logistics solutions can help your organization work more effectively, become more productive, and enhance "green" initiatives.

With GIS, you can

- Manage fuel, payroll, and vehicle maintenance costs effectively.
- Minimize carbon emissions.
- Meet customer expectations with existing resources.

ESRI's ArcGIS® software has helped governments, such as the City of Sacramento, California, successfully route crews and individual workers for years. ESRI® technology supports some of the largest fleets in the world including FedEx and Sears.



"GIS allows us to see things that are not obvious with tabular data and reports. We can display information spatially to see relationships and quickly make improvements. It also supports a systematic approach to assigning work so that we can optimize our routes and meet increasing demand with existing staff."

Sal Aguilar, Jr., Environmental Engineer
City of Los Angeles Bureau of Sanitation
Solid Resources Support Services Division

Improve Fleet Management

Routing fleets of vehicles throughout your community is an integral part of public service. Each day, you need to respond to incoming work orders, decide how to efficiently deploy vehicles based on location and vehicle capacity, and keep costs down in the process.

With ArcGIS software, you can quickly and effectively respond to your community's needs. For example, when a request comes in through 311, you can immediately assess your resources in the field and reroute crews accordingly. You can also link to your work order management system to enhance routing efforts.

ArcGIS allows you to visualize your routes, analyze variables such as schedules and barriers, and make real-time decisions about how to best use staff and vehicles. The ability to quickly determine routes based on current conditions is especially critical during emergencies.



Calculate Fleet Savings

Visit www.esri.com/arclogistics to use the Cost Savings Calculator. Type in your figures, such as the number of vehicles in your fleet, and determine the amount of money and emissions you can save when you use ArcLogistics for routing.

Maximize Your Mobile Workforce

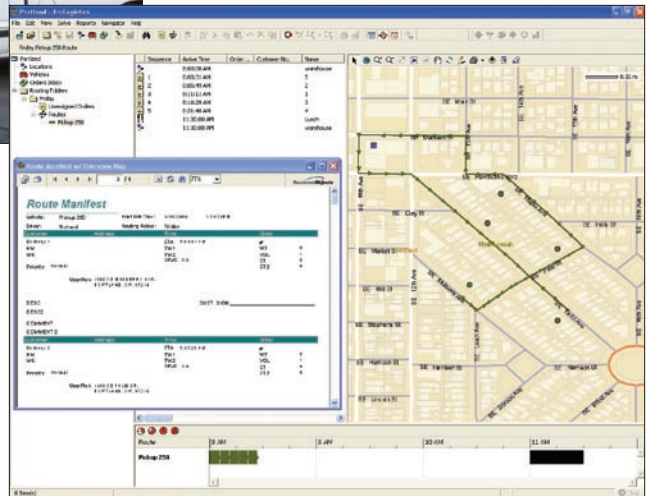
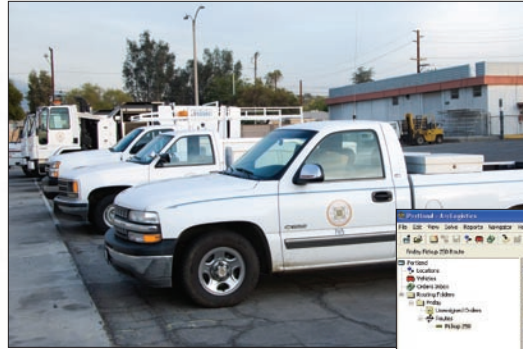
In addition to fleets, governments often manage active mobile workforces such as health and building inspectors and probation and code enforcement officers. Regardless of your organization's size or structure, ESRI routing solutions allow you to optimize routes for your mobile workforce so staff member productivity is increased each day and vehicle use is minimized.

With GIS, you can reduce employee overtime, make more stops per driver, and offer tighter time windows.

Go Green

To keep your staff productive and effective while reducing fuel consumption, you can use GIS to immediately find the best ways to minimize your government's carbon footprint and fuel use and meet customer expectations with your existing staff and vehicles. With these solutions, you can rapidly improve operations.





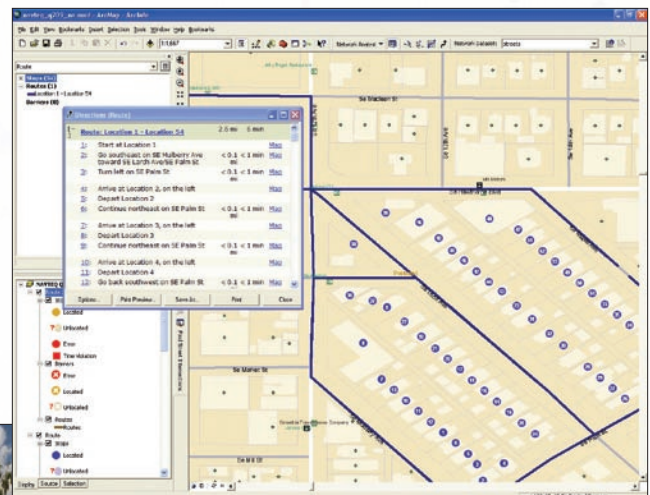
Create Efficient Routes

Governments face complex routing problems. Fleet managers, drivers, and field staff must provide timely service, manage fuel consumption and labor hours, and make same-day changes to schedules, to name just a few factors in a day's work.

GIS offers the logistics solutions you and your staff need to meet your organization's goals for efficiency, productivity, cost savings, and customer services. Use GIS to

- Build optimal routes with consecutive stops.
- Create the best routes for nonsequential stops.
- Solve scheduling problems.
- Incorporate accurate drive times.
- Include your own street data.
- Set up business roles specific to your needs, fleet capacities, and driver or vehicle specialties.
- Import work orders.

Improve routing for geographically spaced and random stops.



Effectively manage sequential or scheduled stops.



Stay on Track in the Field

ESRI's logistics software suite includes a GPS-guided, in-vehicle navigation solution that helps drivers stay on route and on schedule. While in the field, drivers can see routes with optimized stops and turn-by-turn directions. They will be automatically rerouted should the vehicle go off course. Give your drivers the support they need with GIS.



Use optimized routes for in-vehicle navigation.



"ESRI software is being used in San Francisco's GreenRoutes pilot program. It will create more efficient routes for the city's fleet vehicles, thereby helping decrease municipal fuel costs and greenhouse gas emissions. We are pleased to be partnering with ESRI on this innovative program."

Gavin Newsom
Mayor of San Francisco, California

For more information on ESRI's logistics solutions and to explore business partner offerings, visit www.esri.com/fleet.



About ESRI

Since 1969, ESRI has been helping organizations map and model our world. ESRI's GIS software tools and methodologies enable these organizations to effectively analyze and manage their geographic information and make better decisions. They are supported by our experienced and knowledgeable staff and extensive network of business partners and international distributors.

A full-service GIS company, ESRI supports the implementation of GIS technology on desktops, servers, online services, and mobile devices. These GIS solutions are flexible, customizable, and easy to use.

Our Focus

ESRI software is used by hundreds of thousands of organizations that apply GIS to solve problems and make our world a better place to live. We pay close attention to our users to ensure they have the best tools possible to accomplish their missions. A comprehensive suite of training options offered worldwide helps our users fully leverage their GIS applications.

ESRI is a socially conscious business, actively supporting organizations involved in education, conservation, sustainable development, and humanitarian affairs.

Contact ESRI

1-800-GIS-XPRT (1-800-447-9778)

Phone: 909-793-2853

Fax: 909-793-5953

info@esri.com

www.esri.com

Offices worldwide

www.esri.com/locations



ESRI

380 New York Street
Redlands, California
92373-8100 USA