

# ArcGIS® for Aviation: Airports

Improve the Quality and Efficiency of Airport Data Management



FAA 150/5300-13A

AMDB

AXXM

ICAO Annex 14

OGC

ICAO Annex 15

eTOD

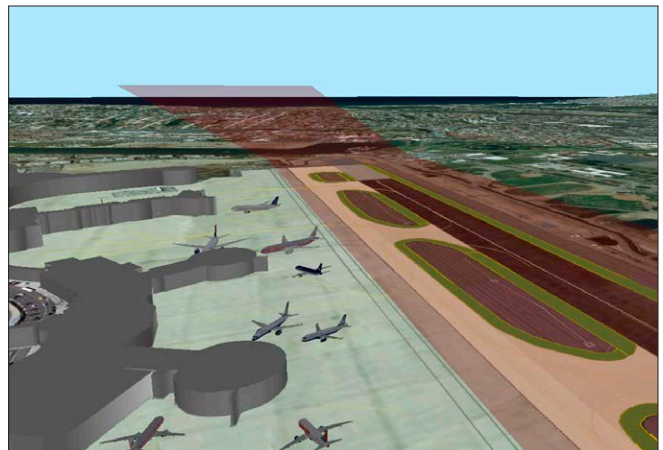
ADO

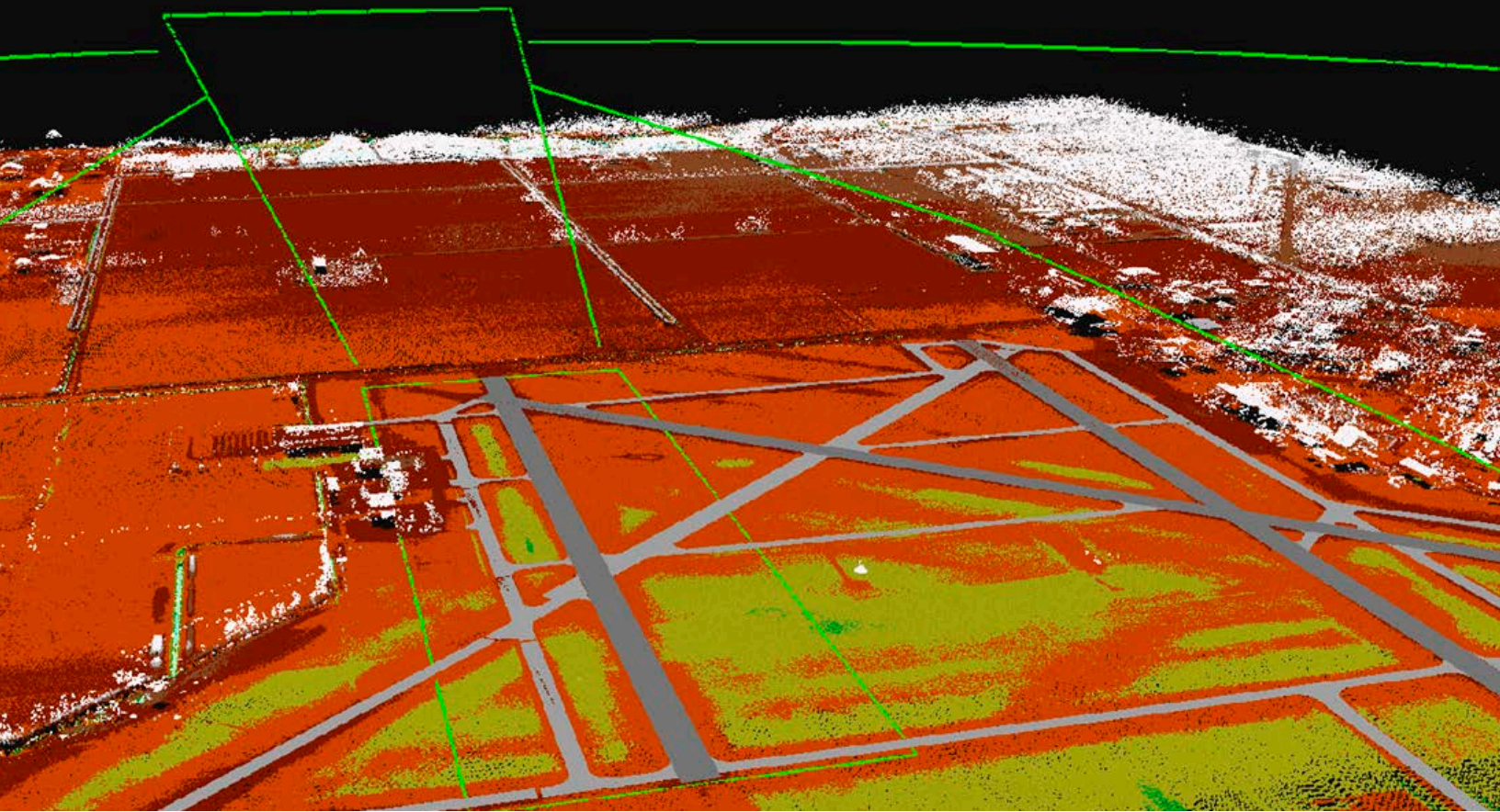
FAA 150/5300-18B

## Key Benefits

- Provides a complete GIS platform for planning, maintenance, and day-to-day operations of airports
- Aids in collaboration and analysis of airport data by allowing you to share information across your organization using airport basemaps, 3D visualizations, and operations support content
- Automates quality control with over 1,000 preconfigured data quality checks to support both domestic and international standards including FAA, ICAO, eTOD, and the DO-272C Aerodrome mapping database
- Automatically generates required terrain and obstacle graphics for your ALP

ArcGIS® for Aviation: Airports helps ensure your operational data is of the highest quality and meets airport regulatory requirements. Better data allows more informed decision making.





### Included in ArcGIS for Aviation: Airports

- Use preconfigured map templates out of the box or easily customize them to an airport's specific requirements
- Validate the integrity of your data using an industry-standard algorithm: Cyclic Redundancy Check (CRC)
- Use out-of-the-box editing templates to consistently and efficiently create and manage airport data and streamline data creation by prepopulating recurring attribute values
- Create and visualize FAA Part 77, FAA AC 150/5300-18B, FAA AC 150/5300-13A, and ICAO Annex 14 and 15 Obstacle Identification Surfaces (OIS) and quickly perform analyses between OIS and point or lidar obstacle data
- Take advantage of Aerodrome Mapping Database (AMDB) support for the DO-272C specification

To request a free trial or for more information, visit [esri.com/aviationairports](https://esri.com/aviationairports), or e-mail [aero@esri.com](mailto:aero@esri.com).



**esri**<sup>®</sup>

**THE  
SCIENCE  
OF  
WHERE™**