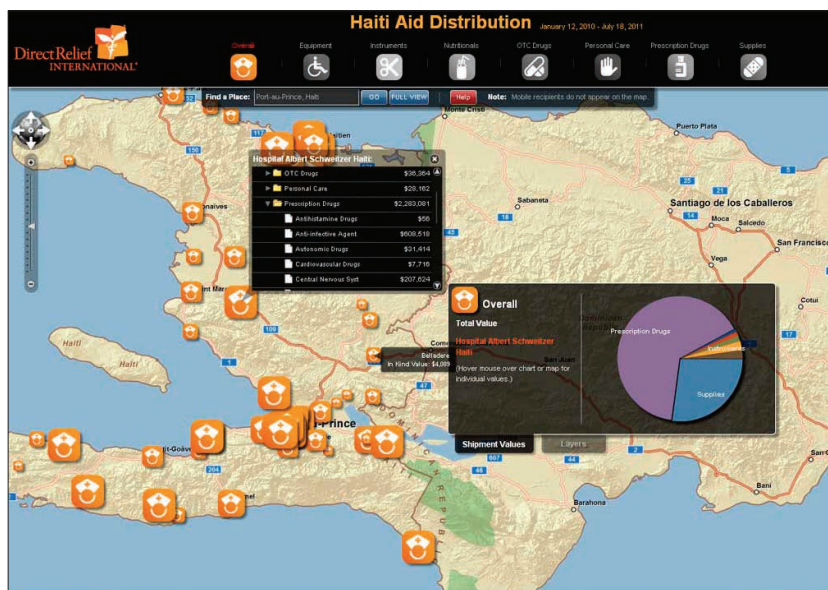


# Mapping for a Better World

The Esri Nonprofit Organization Program supports thousands of organizations around the globe that are working to make the world a better place with Esri's geographic information system (GIS) technology. When you participate in the program your organization will be equipped with the best mapping and spatial analysis capabilities for creating responsible and sustainable solutions to problems from local to global scales.

Learn more at [esri.com/nonprofit](http://esri.com/nonprofit).



Direct Relief International uses Esri ArcGIS technology to help collect and distribute medical supplies and pharmaceuticals to 72 countries.

## The Geographic Advantage™

- Visually communicate the details of your activities to volunteers, supporters, and donors.
- Map and evaluate your program effectiveness and fund-raising opportunities.
- Create informative, attractive, interactive online mapping applications.
- Track supplies, needs, teams, and other resources anywhere in the world.
- Improve operational transparency with working partners and donors.

## Who Is Eligible for the Program?

For qualified organizations, Esri donates the same GIS technology used by more than 300,000 organizations worldwide in return for a small annual administration fee.

Eligibility is based on your formal tax-exempt status and the type of work you do. In the United States, eligibility is signified by your 501(c) designation and National Taxonomy of Exempt Entities (NTEE) category. Tax-exempt status is different for each country. Eligibility status and tax-exempt verification will be determined by local Esri distributors as part of the request process.

[esri.com/nonprofit](http://esri.com/nonprofit)



## Solutions for Nonprofit Organizations

The Esri Nonprofit Organization Program packages and provides access to the tools you need to better visualize and analyze spatial information.

- **ArcGIS™ Online:** Cloud-based content management and web mapping platform that allows organizations to control sharing and accessibility while maintaining all rights to their own data
- **Esri® Community Analyst:** Cloud-based solution for accessing and analyzing thousands of US domestic data variables that can be used for program analysis and fund-raising efforts
- **ArcGIS® for Desktop:** Workstation software for creating, managing, and analyzing geospatial data and maps
- **ArcGIS for Server:** Software for creating and managing organization-wide web services for enterprise-level access to geospatial data and supporting a mobile work force

To streamline the implementation of GIS throughout your organization, consider an enterprise license agreement (ELA), which offers volumes of Esri technology for a low annual administrative fee.

### Register Your Organization Today

To register your organization with the Esri Nonprofit Organization Program, visit [esri.com/nonprofit](http://esri.com/nonprofit).

If you have questions, send an e-mail to [nonprofit\\_inquiry@esri.com](mailto:nonprofit_inquiry@esri.com) for more information.

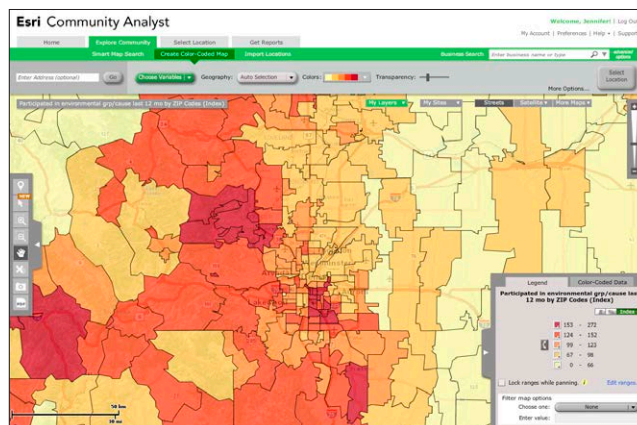
## Why Use ArcGIS?

**Social program development:** Increase the value of limited resources and the positive impact to individuals, families, and society by providing important information in accessible, far-reaching visualization formats.

**Humanitarian assistance and disaster response:** Gather and visualize real-time and historic data for analysis and manage response and recovery efforts for humanitarian crises, earthquakes, flooding, hurricanes/cyclones, wildfires, and other disasters.

**Conservation planning:** Create robust conservation plans with data collection, science-focused modeling, and maps and visualizations that support nature conservancy and natural resource management.

**Fund-raising and membership support:** Provide clear, understandable data to donors and governmental organizations, increase collaboration with other agencies, and showcase work to garner additional support.



Use Esri Community Analyst to access thousands of demographic, health, economic, education, and business data variables across the United States, combined with instant reports and interactive, color-coded maps.

