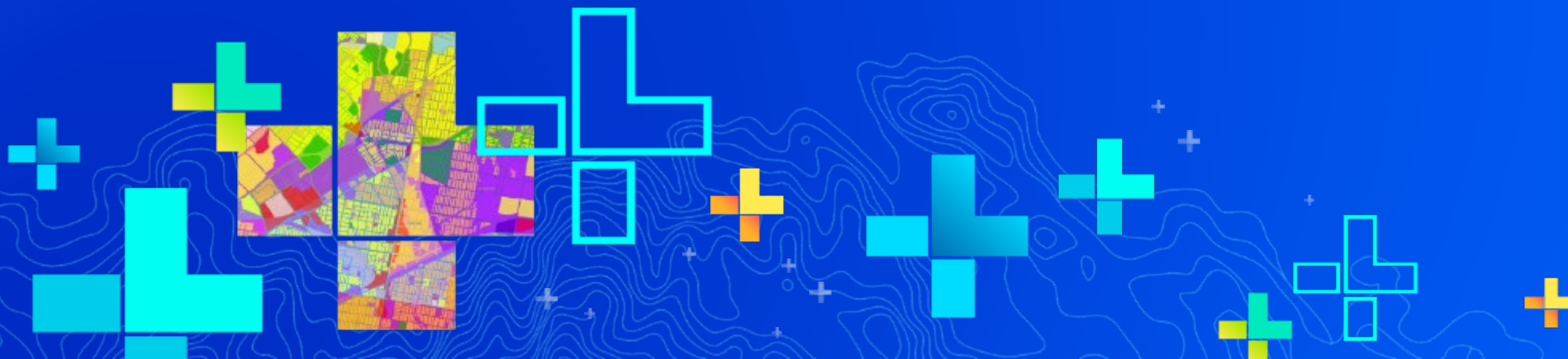




Choosing the Right-ish Basemap

John Nelson & Andy Skinner | Esri

SEE
WHAT
OTHERS
CAN'T





What would you say you do here?

Is he still around?

Andy Skinner

- **Joined the Esri Mapping Center in 2009**
- **Now with the Living Atlas Content Team**
- **Basemaps, color ramps, and all-round map design.**
- Working cartographer for longer than I care to remember ...
- ... with GeoSystems/Mapquest,
- ... and Rand McNally
- askinner@esri.com



What would you say you do here?

I'll rush through this bit...

John Nelson

- **Cartography and UX Design at Esri**
- **Living Atlas, Story Maps, etc.**
- John_Nelson@esri.com
- [@john_m_nelson](https://twitter.com/john_m_nelson)
- esriurl.com/nelson
- esriurl.com/JohnNelsonStories
- www.AdventuresInMapping.com



BASE ■ MAPS

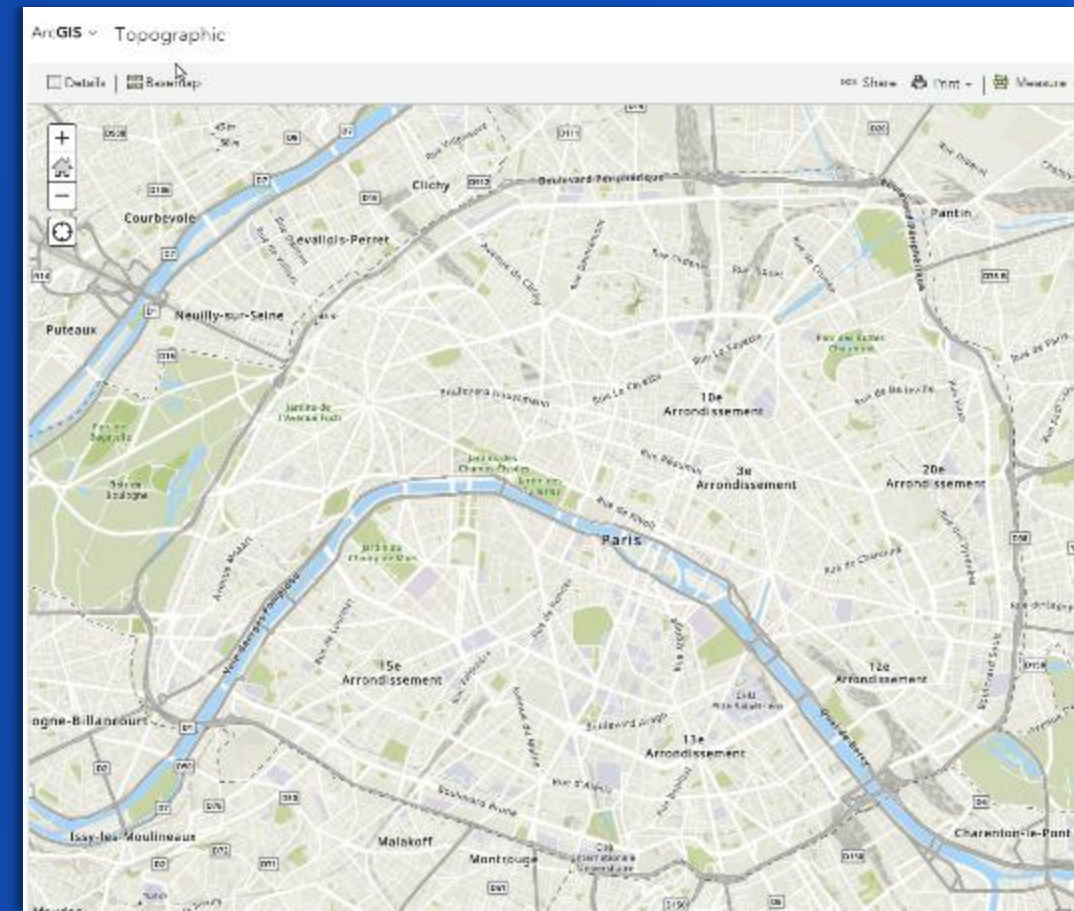
- Where are they all?
- Context or Content
- Light or Dark?
- Raster or Vector?
- Can I change or make them?
- Am I stuck with Mercator?



Numbers:

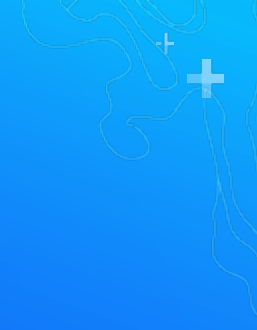
Basemap usage over the last 12 months

- **Topographic Map** 185 million visits
- Street Map 60 million visits
- World Boundaries/Places 38 million visits
- World Light Gray (Base only) 34 million visits
- World Dark Gray (Base only) 9.5 million visits
- National Geographic 6 million visits
- Imagery 102 million visits



Exploring Basemaps in the Living Atlas

Find Esri, Partner, and User, basemaps. Or submit your own!





Search the ArcGIS Living Atlas of the World for maps, apps, and more

[Search examples](#)

All



Trending ▾



Basemaps ▾



Imagery ▾



Boundaries ▾



People ▾



Infrastructure ▾



Environment ▾

Filters:

All content types ▾

All time ▾

All regions ▾

☒ Esri-only contentSort by: [Relevance ▾](#)

187 Results



World Imagery

Tile Layer By: [esri](#)

This layer presents low-resolution satellite imagery for the world and high-resolution satellite and aerial imagery, typically within 3-5 years of currency, for most of the world.

☒ Authoritative

World Street Map

Tile Layer By: [esri](#)

This layer presents highway-level data for the world and street-level data for North America, Europe, Africa, parts of the Middle East, Asia, and more.

☒ Authoritative

National Geographic World Map

Tile Layer By: [esri](#)

This map is designed to be used as a general reference map for informational and educational purposes as well as a basemap by GIS professionals and other users for creating web maps and web mapping applications.



Colored Pencil Map

Web Map By: [esri](#)

This vector web map provides a detailed basemap for the world featuring a hand-drawn look like it was created using colored pencils.

☒ Authoritative

World Topographic Map

Tile Layer By: [esri](#)

This world topographic map includes boundaries, cities, water features, physiographic features, parks, landmarks, transportation, and buildings.

☒ Authoritative

World Transportation

Tile Layer By: [esri](#)

This reference map provides a transportation and street name labels reference overlay that is particularly useful on top of imagery.

☒ Authoritative

Mid-Century Map

Web Map By: [esri](#)

Web map inspired by the art and advertising of the 1950's, this customized vector style presents a unique design option to the ArcGIS basemaps.

☒ Authoritative

Human Geography Basemap

Web Map By: [esri](#)

This web map consists of vector tile layers that form a detailed basemap for the world, featuring a monochromatic style with content adjusted to support Human Geography information.

☒ Authoritative



Search the ArcGIS Living Atlas of the World for maps, apps, and more

[Search examples](#)

All



Trending ▾



Basemaps ▾



Imagery ▾



Boundaries ▾



People ▾



Infrastructure ▾



Environment ▾

Filters:

All content types ▾

All time ▾

All regions ▾

☒ Esri-only contentSort by: [Relevance](#) ▾

167 Results



World Imagery

Tile Layer By: [esri](#)

This layer presents low-resolution satellite imagery for the world and high-resolution satellite and aerial imagery, typically within 3-5 years of currency, for most of the world.

☒ Authoritative

Living Atlas description: Hundreds of basemaps available, from Esri or partners or users.

...



World Topographic Map

Tile Layer By: [esri](#)

This world topographic map includes boundaries, cities, water features, physiographic features, parks, landmarks, transportation, and buildings.

☒ Authoritative

...



World Street Map

Tile Layer By: [esri](#)

This layer presents highway-level data for the world and street-level data for North America, Europe, Africa, parts of the Middle East, Asia, and more.

☒ Authoritative

...



World Transportation

Tile Layer By: [esri](#)

This reference map provides a transportation and street name labels reference overlay that is particularly useful on top of imagery.

☒ Authoritative

...

livingatlas.arcgis.com

World Navigation Map

Overview



This (v2) vector tile layer provides a detailed basemap for the world featuring a custom navigation map style.

 Tile Layer by esri

Created: Oct 26, 2017 Updated: Feb 23, 2018 View Count: 54

Description

This vector tile layer, updated in February 2018, provides a detailed basemap for the world symbolized with a custom navigation map style that is designed for use during the day in mobile devices. The vector tile layer is similar in content to [World Street Map](#), which is delivered as a raster fused map cache tile layer. This vector tile layer provides unique capabilities for customization and high-resolution display.

This comprehensive street map includes highways, major roads, minor roads, railways, water features, cities, parks, landmarks, building footprints, and administrative boundaries. This vector tile layer is built using the same data sources used for the raster basemap [World Street Map](#) and other Esri basemaps. Alignment of boundaries is a presentation of the feature provided by our data vendors and does not imply endorsement by Esri or any governing authority.

Use this Map

This map is designed to be used as a basemap layer or reference layer in a web map. You can add this layer to a web map and save as your own map. If you would like to use this map as a basemap layer in a web map, you may use the vector basemap [Navigation](#) web map.

Customize this Map

Because this map is delivered as a vector tile layer, users can customize the map to change its content and symbology, including fonts. Users are able to turn on and off layers, change symbols for layers, switch to alternate local language (in some areas), and refine the treatment of disputed boundaries. See the [Vector Basemap](#) group for other vector tile layers. For details on how to customize this map, please refer to these articles on the [ArcGIS Online Blog](#) and view the [Esri Vector Basemaps Reference Document](#).

Layers

[World_Basemap_v2](#)

[Open in Map Viewer](#)[Open in Scene Viewer](#)[View style](#)

Details

Source: [Vector Tile Service](#)

Size: 1 MB

★★★★★



Owner



esri

Tags

[v2](#), [wma](#), [World_Basemap_v2](#), [global](#), [streetmapmobile](#), [basemaps](#), [vector](#), [basemap](#), [esri_basemap](#), [general availability](#)

Credits (Attribution)

Sources: Esri, HERE, Garmin, FAO, NOAA, USGS, © OpenStreetMap contributors, and the GIS User Community

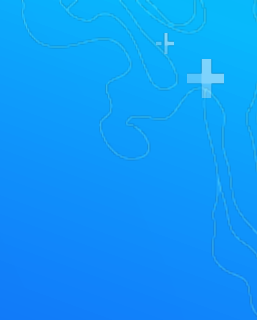
URL

[View](#)

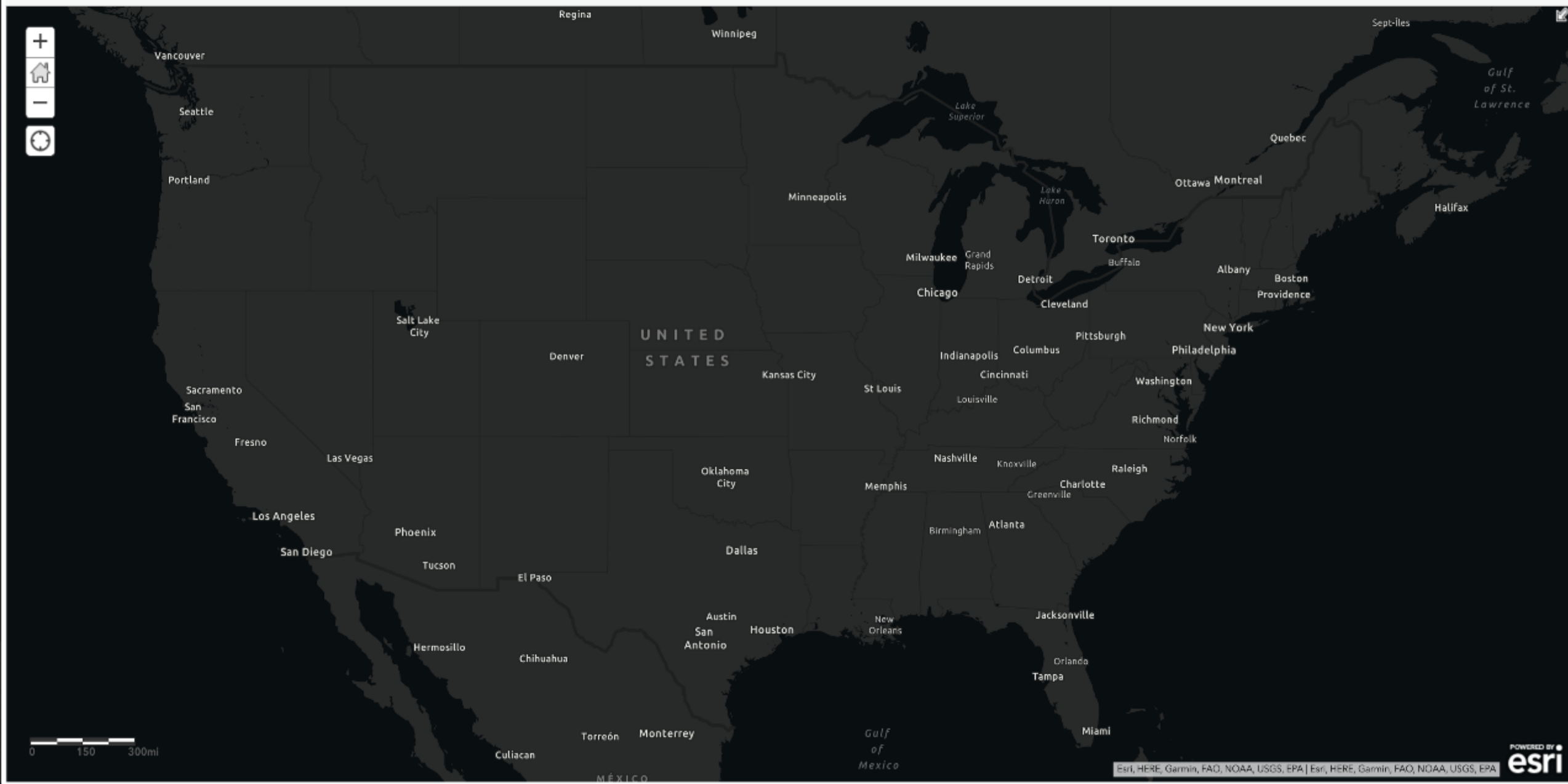
<https://basemaps.arcgis.com/arcgis/rest/>



BASE·MAP?









Search human geography

[Search examples](#)

All



Basemaps



Imagery



Demographics



Transportation



Boundaries & Places



Landscape



Oceans



Earth Observations



Urban Systems



Filter:

All content types

All time

All regions

☐ Esri-only Content

Sort by: Relevance

8 Results

Top Results



WEB MAP

Human Geography
Basemap

By esri



Open in



WEB MAP

Human Geography
Dark Basemap

By esri



Open in



TILE LAYER

Human Geography
Dark Label

By esri



View



TILE LAYER

Human Geography
Dark Detail

By esri



View



TILE LAYER

Human Geography
Detail

By esri



View

Esri Basemaps



WEB MAP

Human Geography
Basemap

By esri



WEB MAP

Human Geography
Dark Basemap

By esri



TILE LAYER

Human Geography
Dark Label

By esri



TILE LAYER

Human Geography
Dark Detail

By esri



TILE LAYER

Human Geography
Detail

By esri

Search human geography



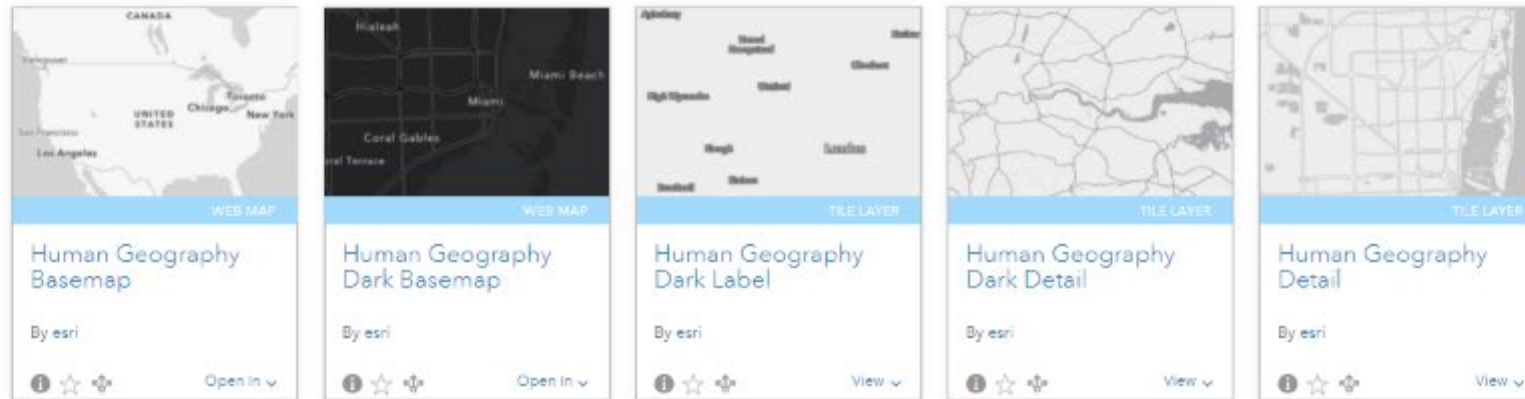
Search examples



Filter: All content types All time All regions Esri-only Content

Sort by: Relevance 8 Results

Top Results



esriurl.com/HumanGeographyBase

Light Gray Canvas Basemap



- Label
- Base

Human Geography Basemap



- Label
- Detail
- Subject
- Base

Search dark

[Search examples](#)

All



Basemaps



Imagery



Demographics



Transportation



Boundaries & Places



Landscape



Oceans



Earth Observations



Urban Systems



Filter:

All content types

All time

All regions

☐ Esri-only Content

Sort by: Relevance

25 Results

Top Results



THE LAYER

World Dark Gray Base

By esri



Open in



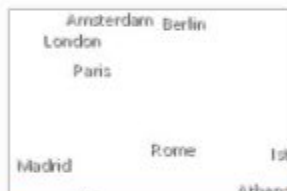
WEB MAP

Dark Gray Canvas

By esri



Open in



THE LAYER

World Dark Gray Reference

By esri



Open in



NZTM BASEMAP

WEB MAP

NZ Canvas Dark

By eaglegis



Open in



WEB MAP

Dark Gray Canvas

By esri



Open in

Esri Basemaps



THE LAYER

World Boundaries and Places

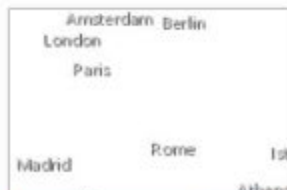
By esri



THE LAYER

World Dark Gray Base

By esri



THE LAYER

World Dark Gray Reference

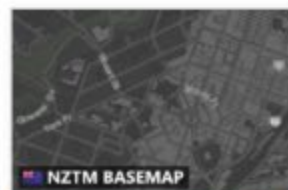
By esri



WEB MAP

Dark Gray Canvas

By esri



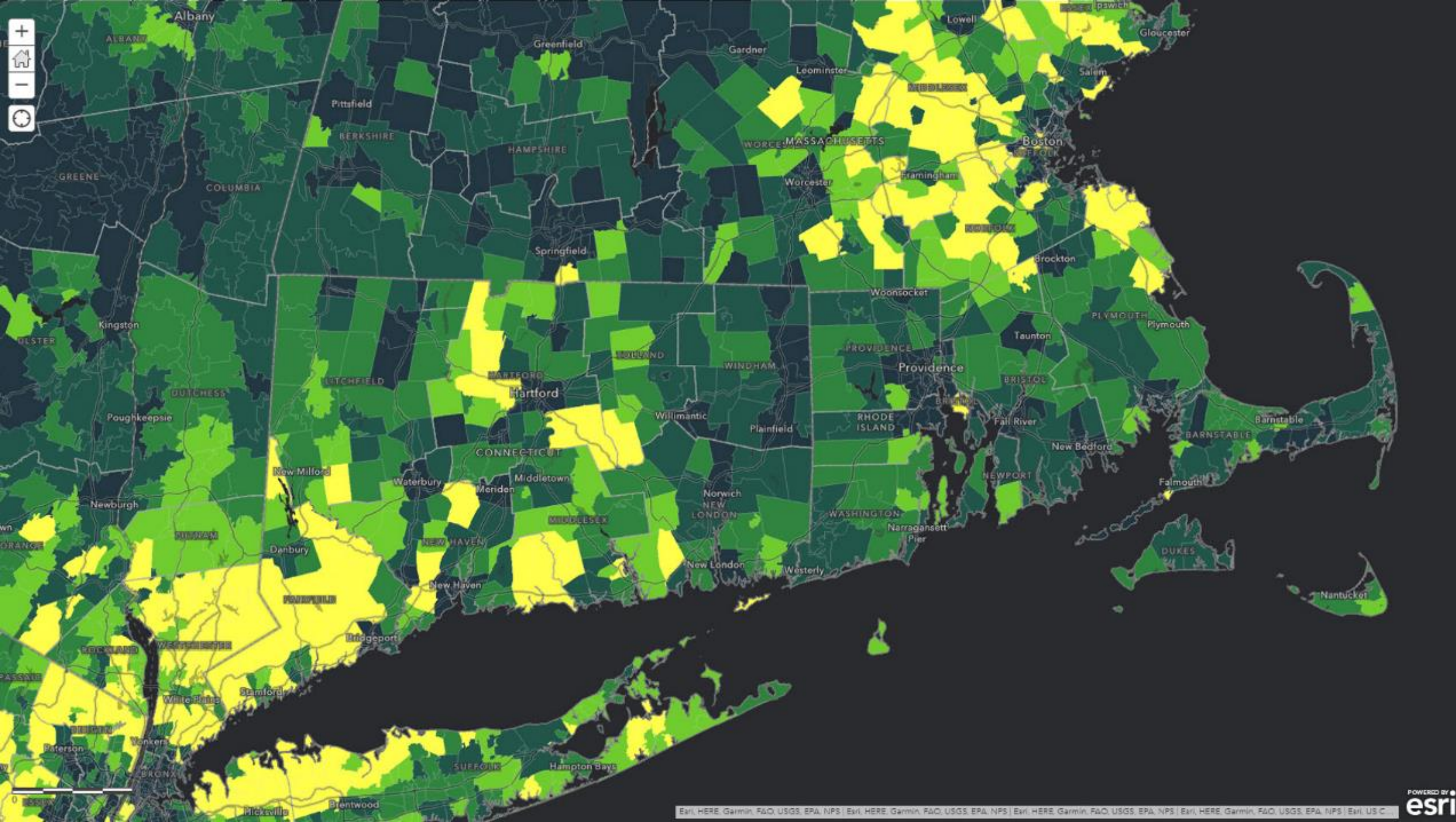
WEB MAP

NZ Canvas Dark

By eaglegis









Search clarity

[Search examples](#)

All



Basemaps



Imagery



Demographics



Transportation



Boundaries & Places



Landscape



Oceans



Earth Observations



Urban Systems



Filter:

All content types

All time

All regions

☐ Esri-only Content

Sort by: Relevance

3 Results

Top Results



WEB MAP

World Imagery
(Clarity)

By esri



Open in



WEB MAPPING APPLICATION

World Imagery Views

By dkenso



Open



WEB MAPPING APPLICATION

Alternativas al Mapa
Base de Imágenes

By EsriEspañolContenidos



Open

Esri Basemaps



WEB MAP

World Imagery
(Clarity)

By esri

Open in



WEB MAPPING APPLICATION

World Imagery Views

By dkenso

Open



WEB MAPPING APPLICATION

Alternativas al Mapa
Base de Imágenes

By EsriEspañolContenidos

Open

Search clarity

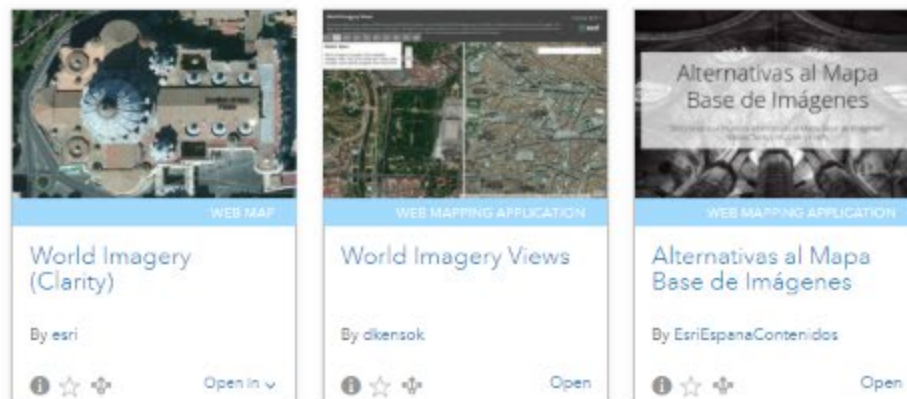


Search examples

Filter: All content types All time All regions ☐ Esri-only Content

Sort by: Relevance 3 Results

Top Results



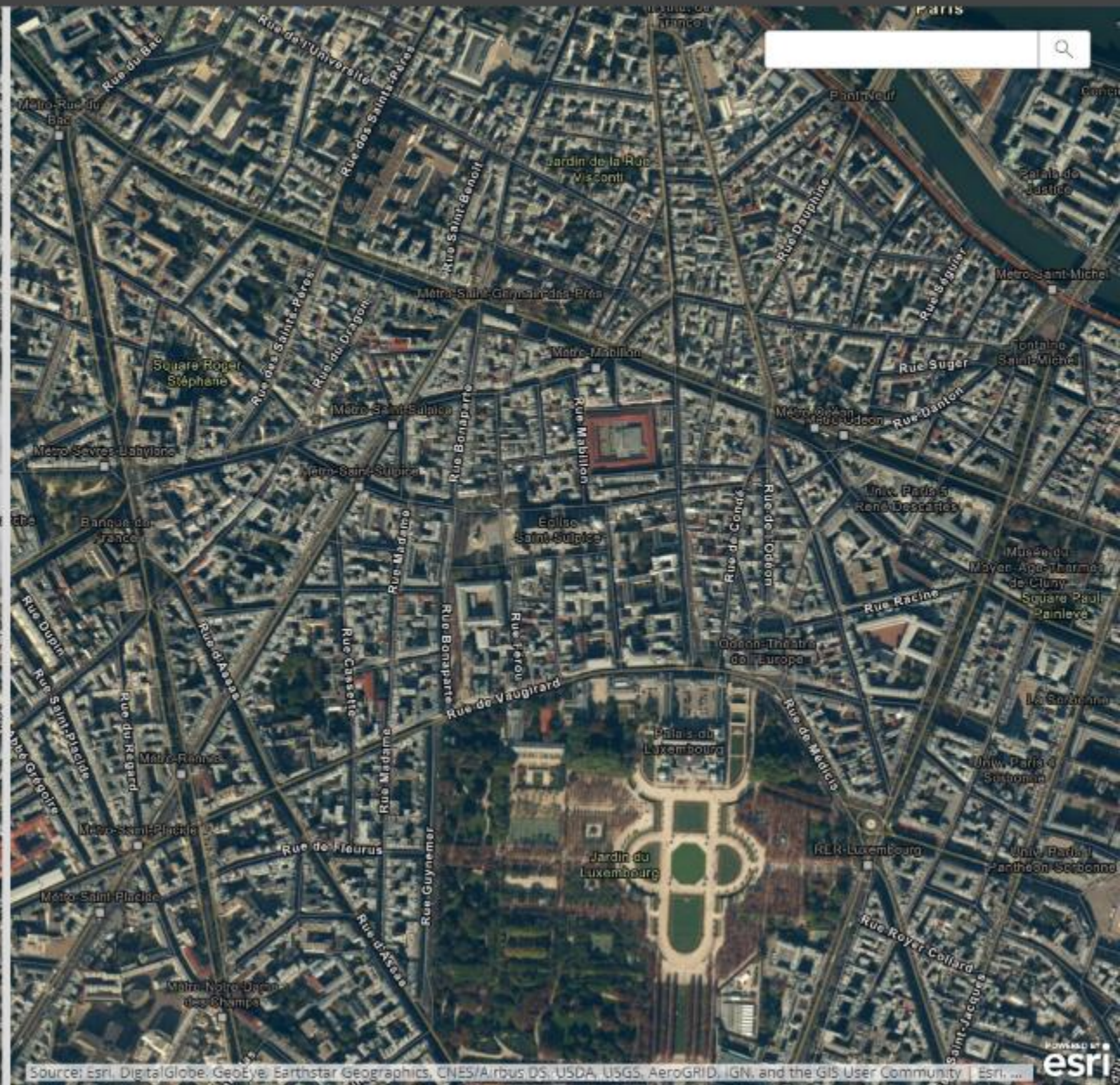
esriurl.com/ClarityBase

World Imagery Views

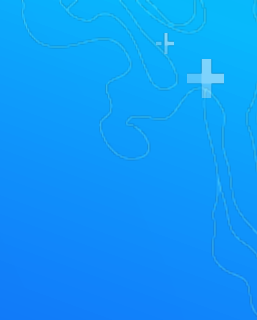


This app enables you to compare different views of the World Imagery map. The default World Imagery map, on the left, is designed to show the most recent imagery. The alternative World Imagery (Clarity) map, on the right, is designed to show other imagery from our archive that may be more clear or accurate. You can use the tabs to view different bookmarked locations, or the search tool to view other areas. Click on the maps to get metadata info for the imagery.

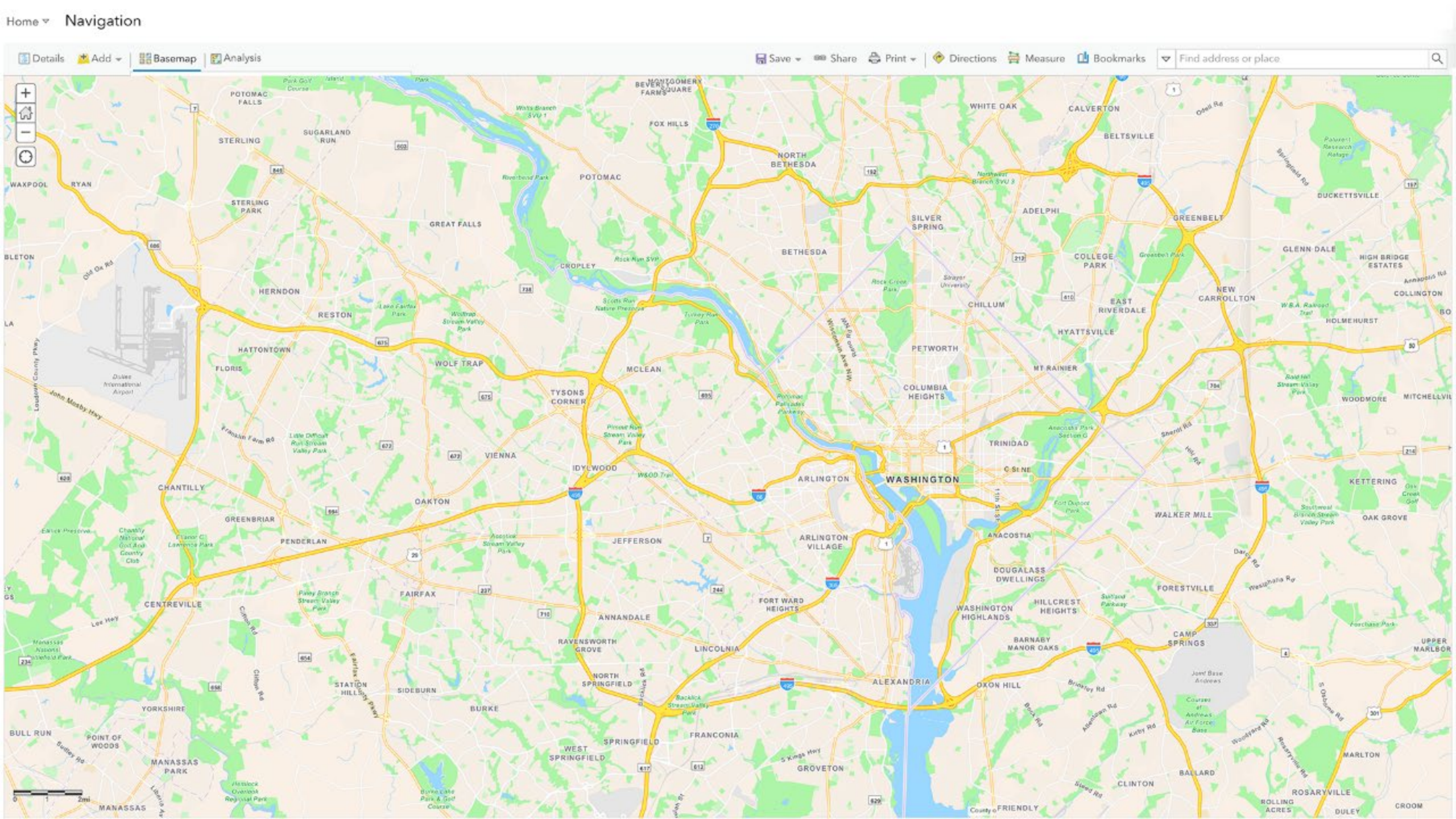
- 1
- 2
- 3
- 4
- 5
- 6
- 7
- 8
- 9
- 10



BASE·MAP?











All

Trending ▾

Basemaps ▾

Imagery ▾

Boundaries ▾

People ▾

Infrastructure ▾

Environment ▾

Filters:

All content types ▾

All time ▾

All regions ▾

- ☐ Reference Maps
- ☒ Creative Maps
- ☒ Vector Tiles
- ☐ Component Layers
- ☐ Historical Maps

[CLEAR ALL](#) | [SELECT ALL](#)Sort by: [Relevance ▾](#)

93 Results



Mid-Century Map

Web Map By: [esri](#)

Web map inspired by the art and advertising of the 1950's, this customized vector style presents a unique design option to the ArcGIS basemaps.

☒ Authoritative

Human Geography Map

Web Map By: [esri](#)

This web map consists of vector tile layers that form a detailed basemap for the world, featuring a monochromatic style with content adjusted to support Human Geography information.

☒ Authoritative

Modern Antique Map

Web Map By: [esri](#)

Unique vector web map customization. Updating the look of 18th and 19th century antique maps in the modern world of multi-scale mapping.

☒ Authoritative

Human Geography Dark Map

Web Map By: [esri](#)

This web map consists of vector tile layers that form a detailed basemap for the world, featuring a dark monochromatic style with content adjusted to support Human Geography information.

☒ Authoritative

Colored Pencil Map

Web Map By: [esri](#)

This vector web map provides a detailed basemap for the world featuring a hand-drawn look like it was created using colored pencils.

☒ Authoritative

A Children's Map

Web Map By: [esri_basemaps](#)

Welcome to a Children's Map of the World



Nova Map

Web Map By: [esri](#)

This web map provides a detailed vector tile basemap for the world featuring a dark background with glowing blue symbology inspired by the ArcGIS.com splash screen.

☒ Authoritative

Newspaper Map

Web Map By: [esri](#)

Unique take on the Esri vector tile basemap. This Newspaper style web map is a black & white design with halftone patterns, red highlights, and stylized fonts.

☒ Authoritative





Search wgs84



Search examples



All



Basemaps



Imagery



Demographics



Transportation



Boundaries & Places



Landscape



Oceans



Earth Observations



Urban Systems



Filter:

All content types

All time

All regions

☐ Esri-only Content

Sort by: Relevance

33 Results

Top Results



TILE LAYER

World Imagery
(WGS84)

By esri



Open in



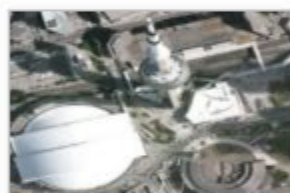
WEB MAP

Imagery Hybrid
(WGS84)

By esri



Open in



WEB MAP

Imagery (WGS84)

By esri



Open in



TILE LAYER

World Hillshade
(WGS84)

By esri



Open in



WEB MAP

Streets (WGS84)

By esri



Open in

Esri Basemaps



TILE LAYER

World Imagery
(WGS84)

By esri



WEB MAP

Imagery Hybrid
(WGS84)

By esri



WEB MAP

Imagery (WGS84)

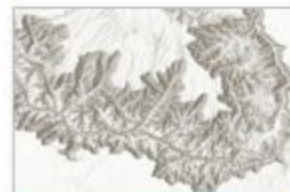
By esri



WEB MAP

Streets (WGS84)

By esri



TILE LAYER

World Hillshade
(WGS84)

By esri

Search wgs84



Search examples



Filter: All content types All time All regions Esri-only Content

Sort by: Relevance 33 Results

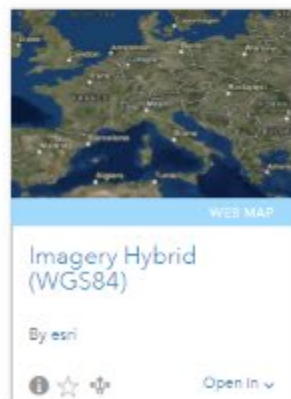
Top Results

World Imagery
(WGS84)

By esri



Open in

Imagery Hybrid
(WGS84)

By esri



Open in



Imagery (WGS84)

By esri



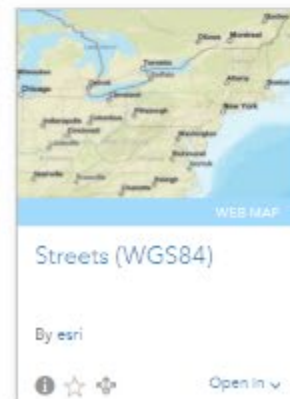
Open in

World Hillshade
(WGS84)

By esri



Open in



Streets (WGS84)

By esri



Open in

esriurl.com/WGS84Base

Raster Basemaps: ArcGIS Enterprise, ArcGIS Pro, ArcGIS Online

	HIGH CONTENT HIGH SATURATION	HIGH CONTENT MEDIUM SATURATION	LOW CONTENT LOW SATURATION	LOW CONTENT HIGH SATURATION
QUALITATIVE POINTS	Street Map	Topographic Map	Light Gray Canvas	Dark Gray Canvas
	Imagery with Labels	Oceans	Terrain with labels	
	National Geographic			
	Open Street Map			
	Firefly			
QUANTITATIVE POINTS	Imagery with Labels	Topographic Map	Light Gray Canvas	Dark Gray Canvas
	Firefly	Oceans	Terrain with labels	
LINES	Street Map	Topographic Map	Light Gray Canvas	Dark Gray Canvas
	Imagery with Labels	Oceans	Terrain with labels	
	Firefly			
QUALITATIVE POLYGONS	Imagery with Labels	Topographic Map	Light Gray Canvas	Dark Gray Canvas
	Firefly	Oceans	Terrain with labels	
QUANTITATIVE POLYGONS	Imagery with Labels	Oceans	Light Gray Canvas	Dark Gray Canvas?
	Firefly			

BASE·MAP

BASE·MAP



Vector Basemaps: ArcGIS Pro, ArcGIS Online

	HIGH CONTENT HIGH SATURATION	HIGH CONTENT MEDIUM SATURATION	LOW CONTENT LOW SATURATION	LOW CONTENT HIGH SATURATION	STYLISTIC
QUALITATIVE POINTS	Street Map Street Map Night Imagery Hybrid National Geographic Open Street Map	Topographic Map Navigation Navigation Dark Oceans	Light Gray Canvas Human Geography Terrain with labels Charted Territory	Dark Gray Canvas Human Geography Dark	COLORED PENCIL Mid-Century Modern Antique NEWSPAPER Nova Watercolour
QUANTITATIVE POINTS	Imagery Hybrid	Topographic Map Navigation Oceans	Light Gray Canvas Human Geography Terrain with labels Charted Territory	Dark Gray Canvas Human Geography Dark	Pop Art
LINES	Street Map Imagery Hybrid	Topographic Map Navigation Oceans	Light Gray Canvas Human Geography Terrain with labels	Dark Gray Canvas Human Geography Dark	
QUALITATIVE POLYGONS	Imagery Hybrid	Topographic Map Oceans	Light Gray Canvas Human Geography Terrain with labels	Dark Gray Canvas Human Geography Dark	
QUANTITATIVE POLYGONS	Imagery Hybrid	Oceans	Light Gray Canvas Human Geography	Dark Gray Canvas	

BASE·MAP

BASE·MAP

WGS84

Street Map
Street Map Night
Imagery Hybrid
Topographic Map
Navigation
Light Gray Canvas
Dark Gray Canvas
Terrain with labels
Charted Territory

Exploring Basemaps from within the Map Viewer

Swapping out a basemap for another





Select a basemap



Imagery



Imagery Hybrid



Streets



Topographic



Navigation



Streets (Night)



Terrain with Labels



Light Gray Canvas








Dark Gray Canvas



Oceans



OpenStreetMap

- 




- Search for Layers

Browse Living Atlas Layers

Browse Subscription Layers

Add Layer from Web

Add Layer from File


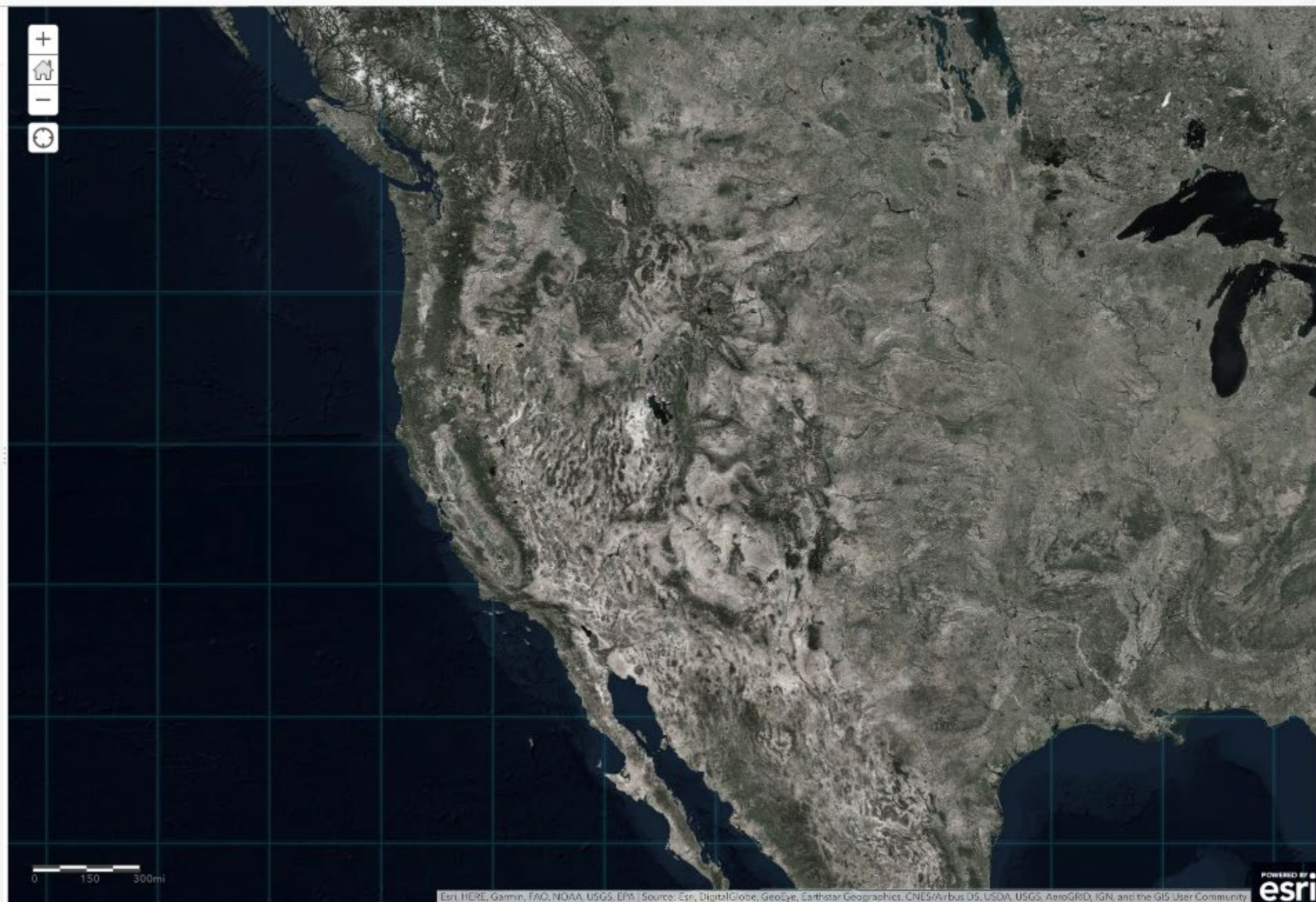
Add Map Notes

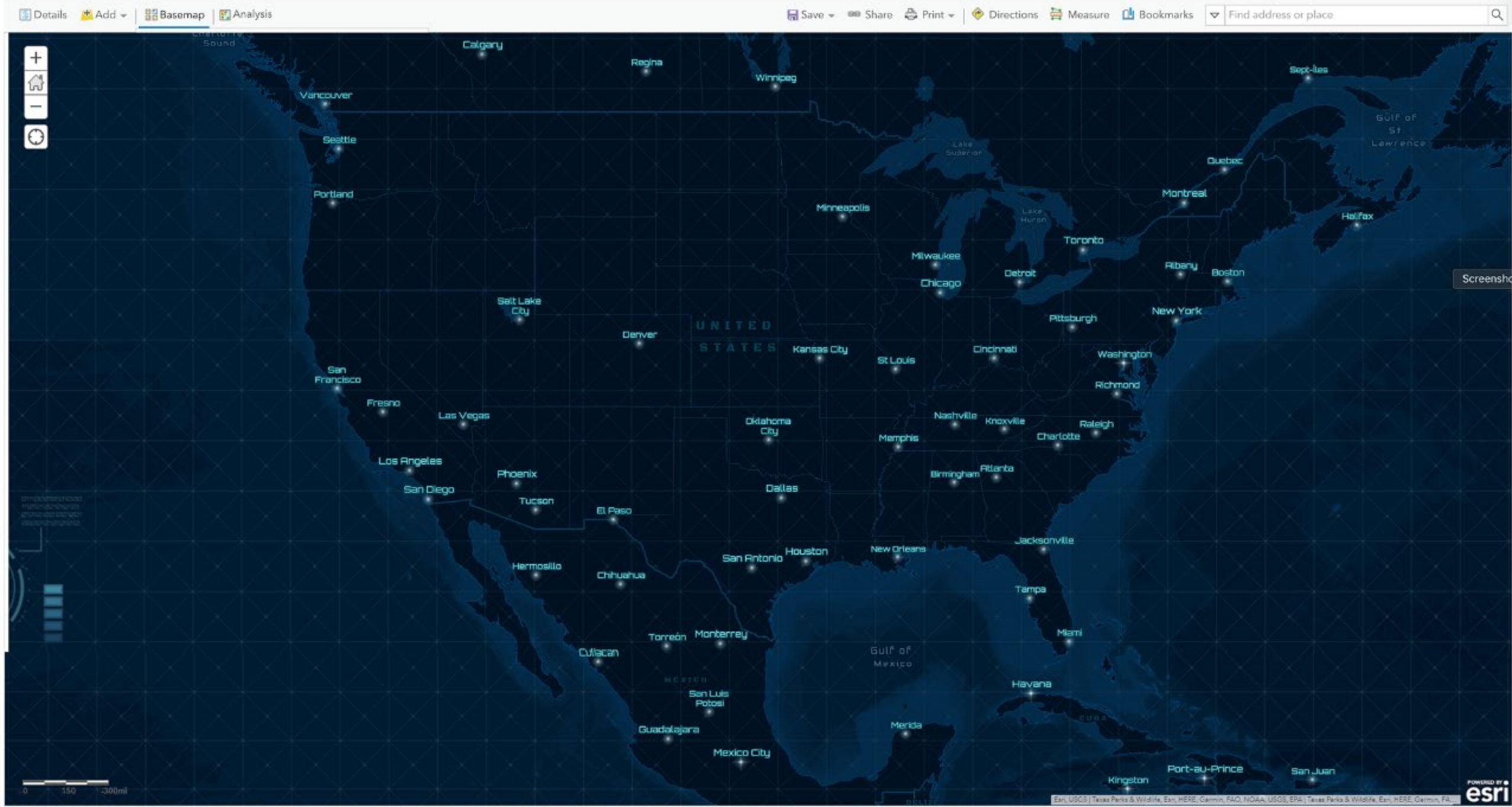


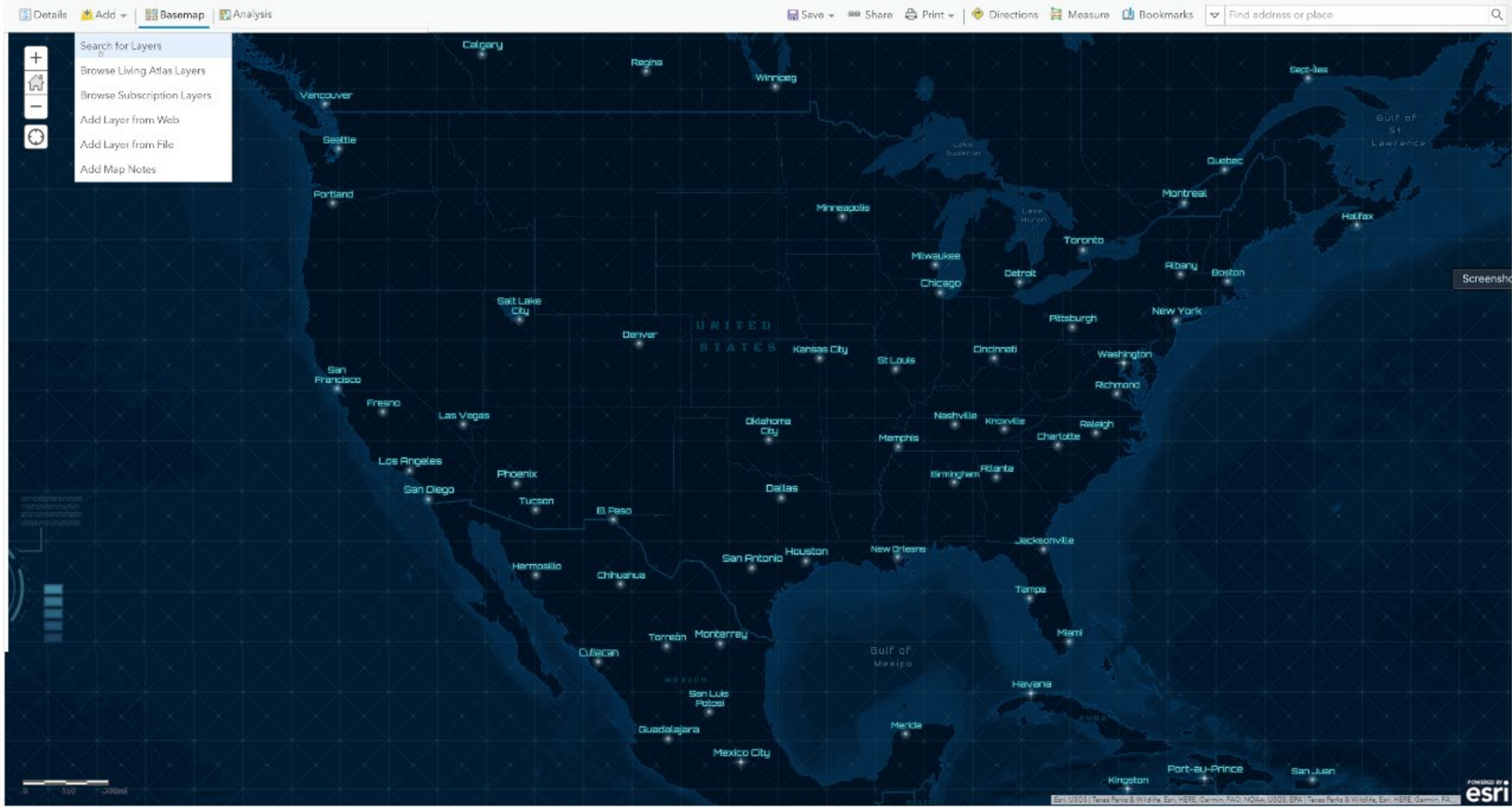
← Living Atlas ▾

Q nova

4 layers

 Nova
by Esri
Updated: 5/15/19 Global Power Plants
by JenniferBell_UO
Updated: 2/26/19 Envirotech dati: Novadi
by Envirotech_dati
Updated: 6/28/16 Latvia Novadi Boundaries 2017
by Esri
Updated: 6/27/18





Search for layers

407856 layers

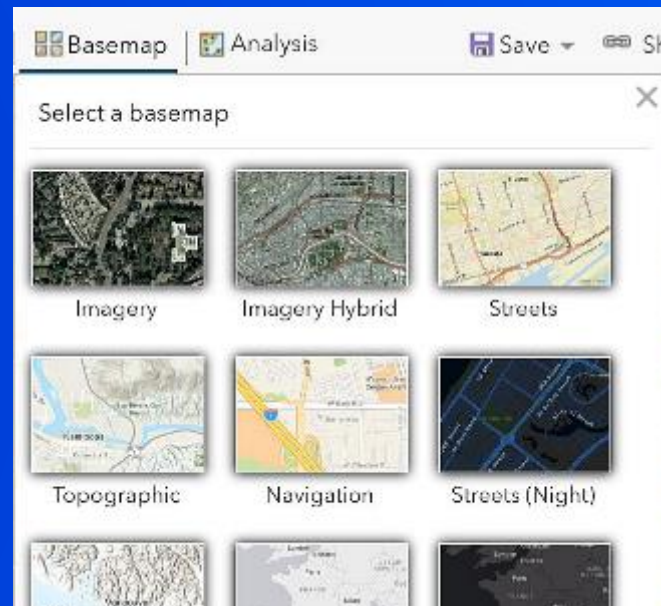
Within Map Area X +1 Clear All

- Solid Waste Vehicles ⊕
- Active_Volcanoes_WFS ⊕
- Tribal Councils Location ⊕
- Error of Omission and Commission BRP ⊕
- Bo Weather Forecast ⊕
- Rogberi Weather Forecast ⊕
- Kabala Weather Forecast ⊕
- Wilberforce Weather Forecast ⊕
- NDHUB_RoadsCountyWM ⊕
- NOAA_all_data ⊕
- Snohomish_Temperature_and_Salinity ⊕
- glo_willamette_2011_04_CopyF26 ⊕
- West_Nile_Virus_Occurrence_wfs ⊕
- Tennessee_Public_Schools_WFS ⊕
- Active and In Process ITP Authorizations ⊕



Choosing Which Basemaps Appear for your Organization

Curating a custom list of basemaps for your go-to basemap gallery.
This thing...



Story Maps Basemaps [Edit](#)

[Overview](#)[Content](#)[Members](#)[Settings](#)[Edit Thumbnail](#)

Add a brief summary about the group.

owned by StoryMaps

[Edit](#)[Invite Users](#)[Share](#)[Membership Requests](#) 0

Description

Add an in-depth description of the group.

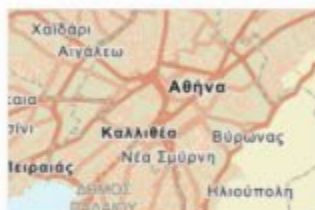
[Edit](#)

Latest Content

[View All Group Content](#)

Vector Topographic
by StoryMaps

Created: Jan 11, 2017
Updated: Feb 16, 2018
View Count: 1,000



Vector World Street Map (L...
by StoryMaps

Created: Jan 11, 2017
Updated: Feb 16, 2018
View Count: 942



Vector Imagery Hybrid
by StoryMaps

Created: Jan 11, 2017
Updated: Feb 16, 2018
View Count: 992



Vector Newspaper Map
by StoryMaps

Created: Jan 11, 2017
Updated: Feb 16, 2018
View Count: 1,140



Vector Human Geography (...
by StoryMaps

Created: Jan 25, 2018



Vector Human Geography (...
by StoryMaps

Created: Jan 25, 2018



Vector Sangria Basemap
by cooper.storymaps

Created: Nov 29, 2017



Vector Dark Gray Canvas
by StoryMaps

Created: Dec 8, 2017

Details

Created: August 24, 2015

Viewable by: Everyone (public)

Contributors: Members

6 45



Owner

[Change Owner](#)

StoryMaps

Membership

[Leave Group](#)

✓ You are a group manager

Tags

[Edit](#)

administrative



Storytelling with Maps

SAVE

CANCEL

General

Home Page

Gallery

Map

Item Details

Groups

Utility Services

Roles

Marketplace

Credits

Security

Open Data

Map

Configure the components people in your organization will use to author maps.

Basemap Gallery



Select the group whose webmaps will be shown in the Basemap Gallery.

Story Maps Basemaps (Sto ▾ Sorted by: Title ▾ ☒ Ascending☐ Share the Esri default basemaps to this group when you click Save. ?

Default Basemap



The Default Basemap opens when users click New Map. Set the group in the Basemap Gallery above and choose the map to open. It will open at the default extent you set. To set the default extent to the extent of your currently selected default basemap, click Use Map Extent as Default. To set a different extent, click Choose Extent and set the extent you want to use as your default extent.

Topographic ▾

USE MAP EXTENT AS DEFAULT

Default Extent



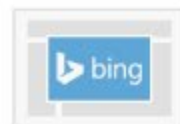
The Default Extent determines the extent used when users click New Map.

Left: -161.697 Right: 161.697

Top: 80.695 Bottom: -72.673

CHOOSE EXTENT

Bing Maps



Provide a Microsoft-supplied Bing Maps key in order to use Bing Maps in your organization's web maps. If you have any questions, please contact your account manager or local Esri office.

Akt3ZoeZ089qyG3zWQZSWpwV3r864AHStal7Aon21-Fyxwq_KdydAH32LTwhieA8

☐ Allow this Bing key to be used in maps shared publicly by organization members.

Configurable Apps

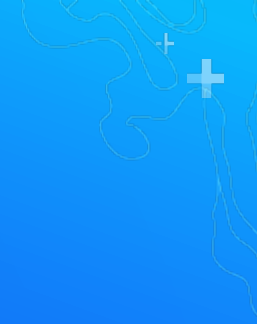


Configurable apps contain various settings users can configure to create web apps. Map-based apps display one or more maps. Choose which group contains the apps you want to use in the configurable apps gallery.

Esri Default ▾

Vector or Raster?

What's the difference? What's best for me?



Raster

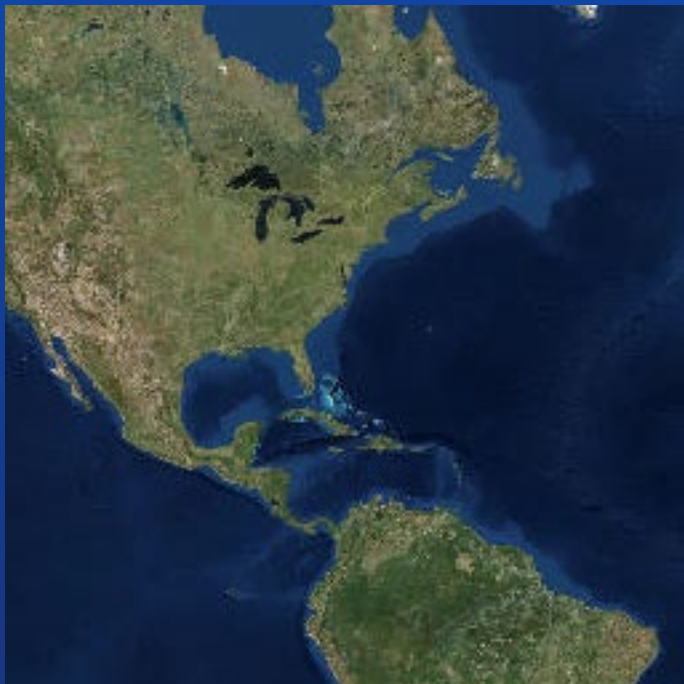
- Baked and tiled images, cached and fetched as users navigate the map
- “Baked” and cached
- Uniform size
- Increases 4x per standard zoom level
- Imagery

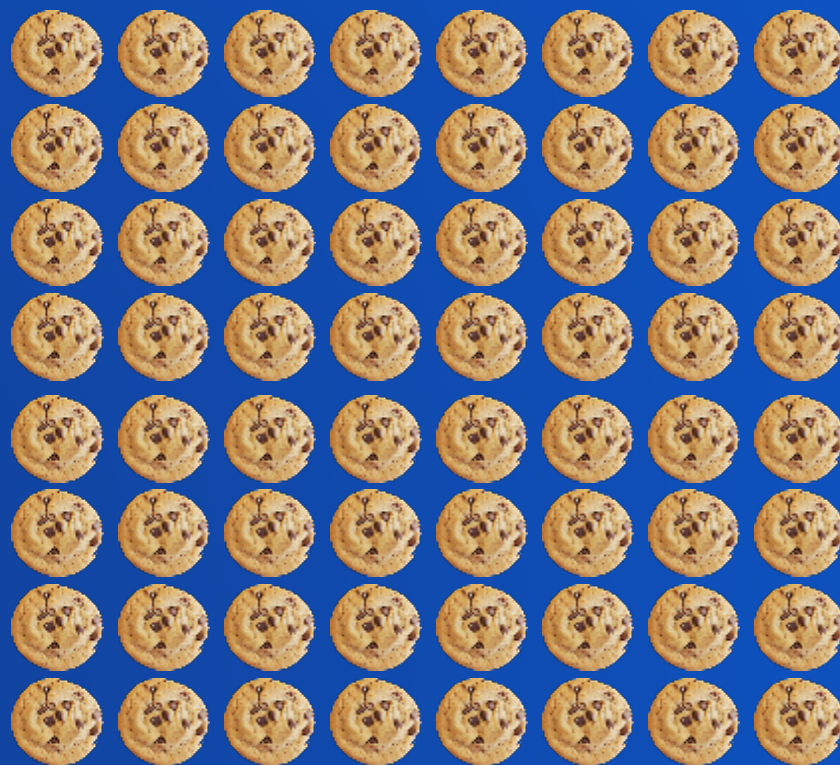


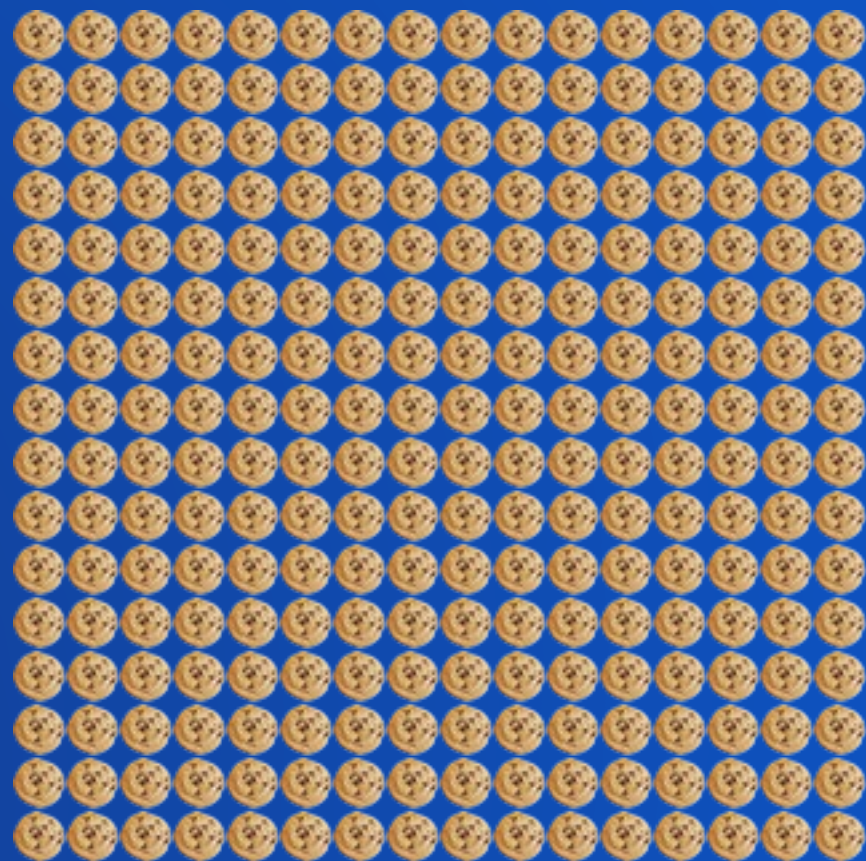


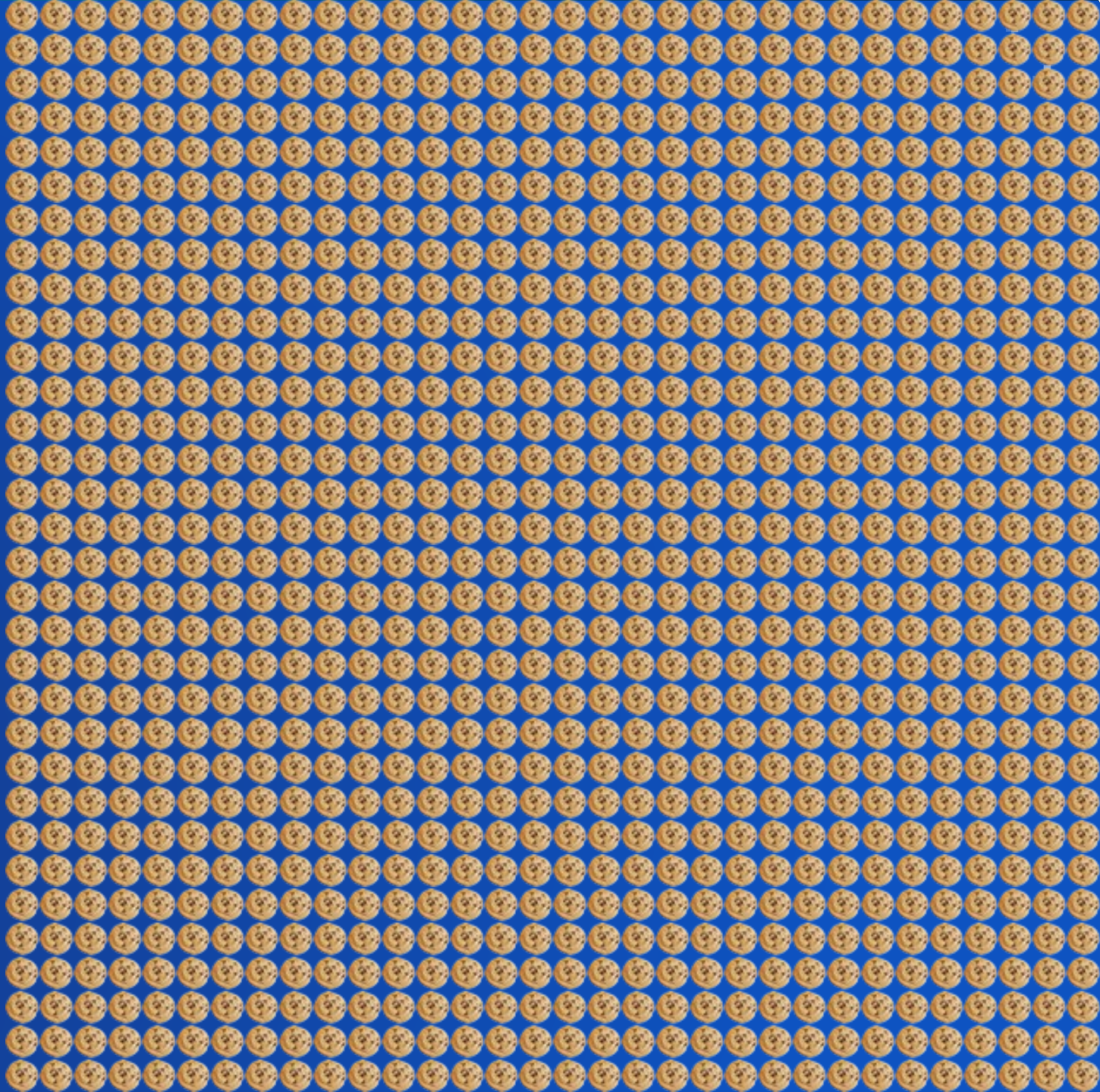
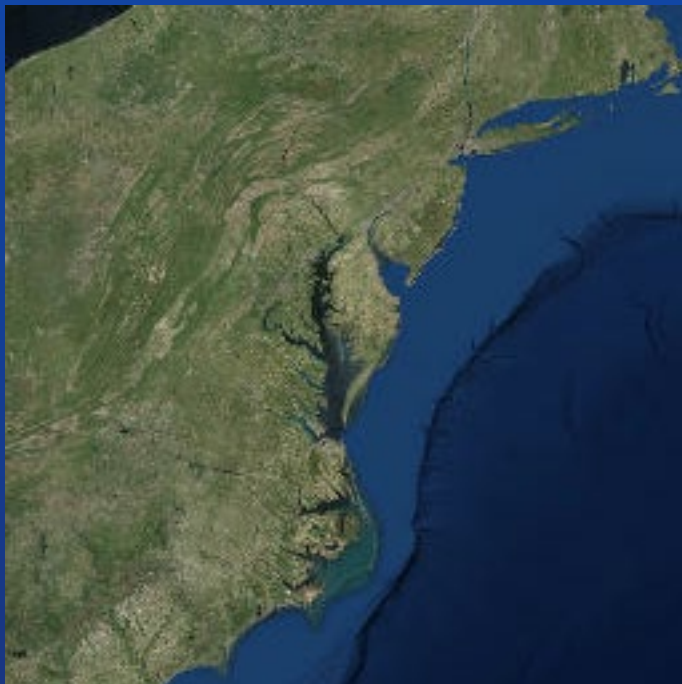


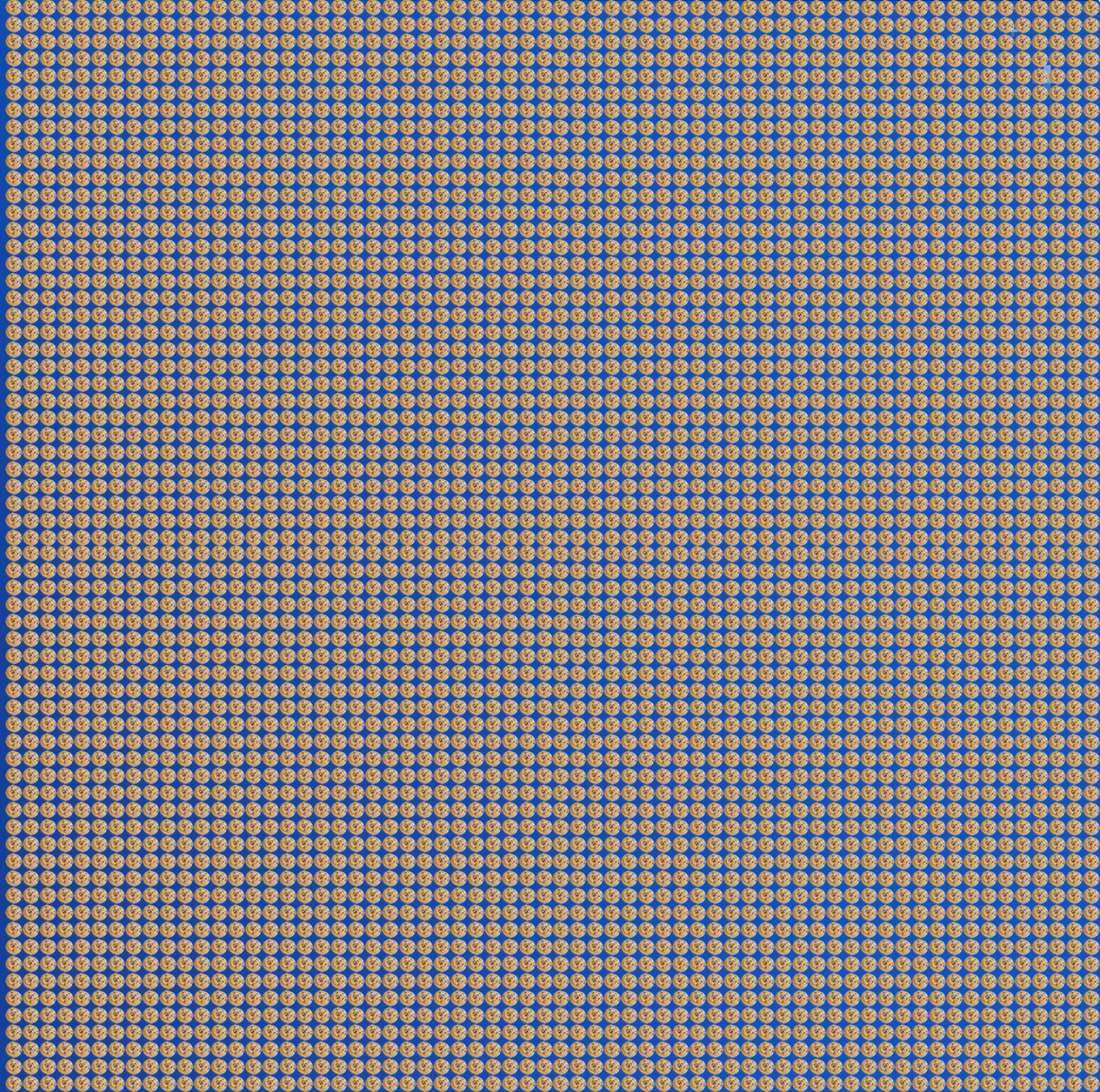












Vector

- Baked and tiled images, cached and fetched as users navigate the map
- Point, Line, and Polygon geometry served into the browser as tiles
- Data and Styling Rules are dynamic | Tiles Created IN THE BROWSER
- Rapid and Easier Updates
- Lightweight
- Crisp appearance
- Labels stay Horizontally Oriented







Search vector

[Search examples](#)

All



Basemaps



Imagery



Demographics



Transportation



Boundaries & Places



Landscape



Oceans



Earth Observations



Urban Systems



Filter:

All content types

All time

All regions

☐ Eri-only Content

Sort by: Relevance

96 Results

Esri Basemaps



WEB MAP

Streets

By esri



Open In



WEB MAP

Dark Gray Canvas

By esri



Open In



WEB MAP

Light Gray Canvas

By esri



Open In



MAP-MADE LAYER

Lichtgrijze Canvas RD

By Esri_NL_Content



Open In



WEB MAP

Imagery Hybrid

By esri



Open In



WEB MAP

Navigation

By esri



Open In



WEB MAP

Topographic

By esri



Open In



WEB MAP

Streets (Night)

By esri



Open In



TILE LAYER

OS Open Raster Tile Layer

By EsriUKContent



Open In



WEB MAP

Human Geography Basemap

By esri



Open In

Vector Editor

- Because vector tiles have style rules, you can easily change those style rules!
- Styling tool spearheaded by Wesley Jones and Patrick Arlt
- Fast, visual, multiscale, WYSIWYG editor
- Create or modify style
- Unreasonably fun



BETA

Dark Plumb Canvas Base

Water area small scale

Search Layers

background

Natural

Populated Places

Land Use

Transportation

Water

Other

River

Ocean

Lake

Water area small scale

Water area medium scale/Lake intermittent

Water area medium scale/Lake or river

Water area large scale/Lake intermittent

Water area large scale/Lake or river

Water area/Lake, river or bay

Water area/Lake or river intermittent

Water area/Inundated area

Buildings

Roads

Boundaries

Visible

Visible Zoom Range

Color

Pattern

Outline Color

Opacity

Translate

Map

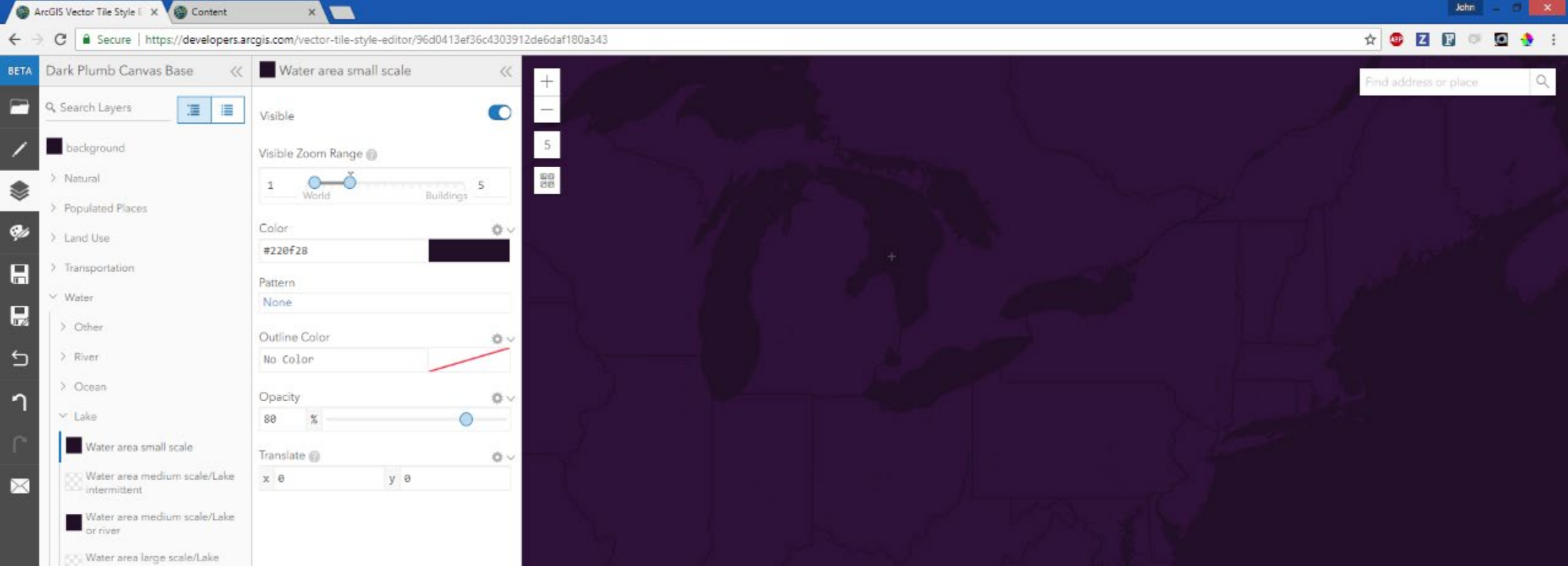
Map

Map

Find address or place

Click on any map to edit that layer

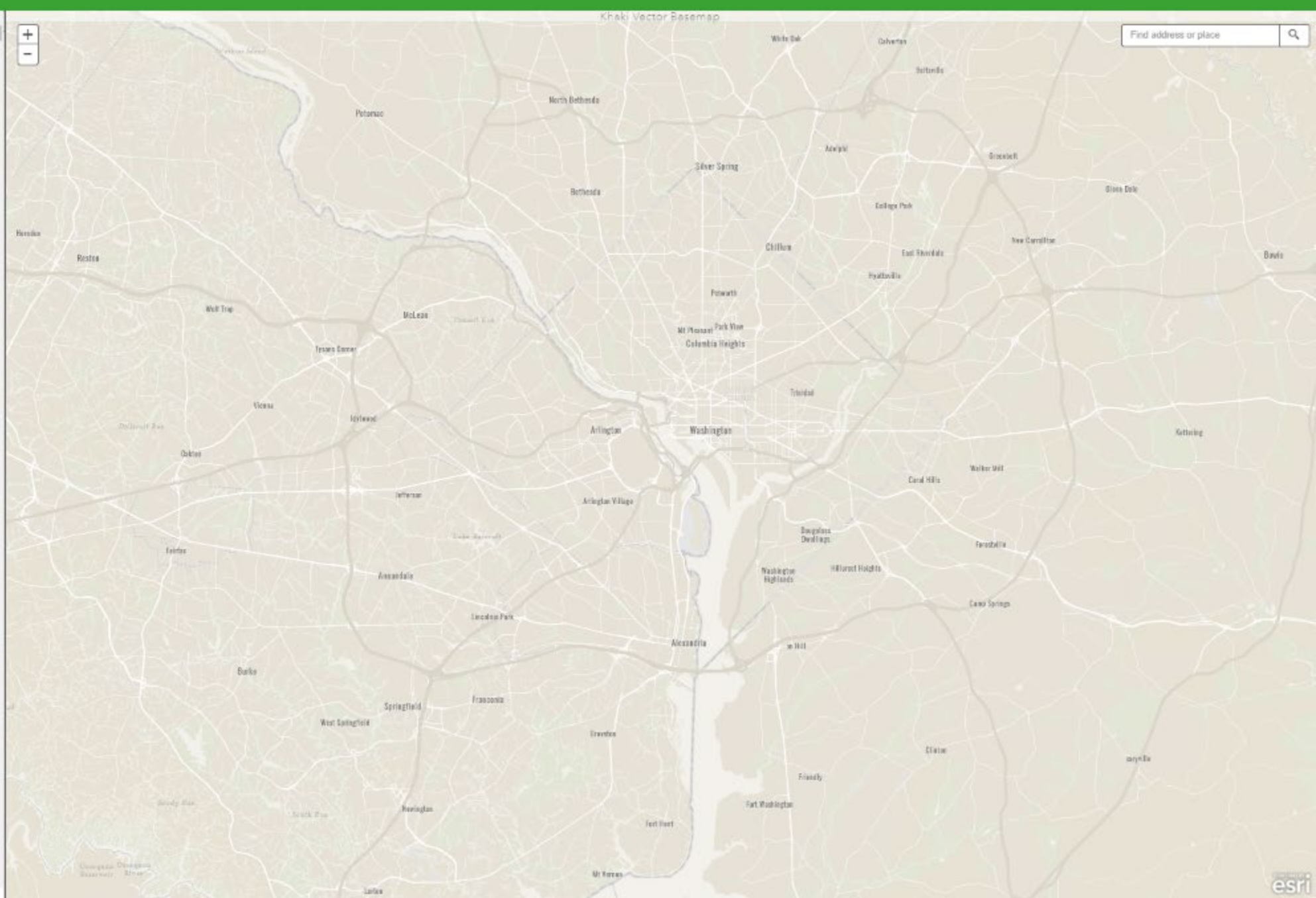
No Background Hillshade Imagery Hide Minimaps

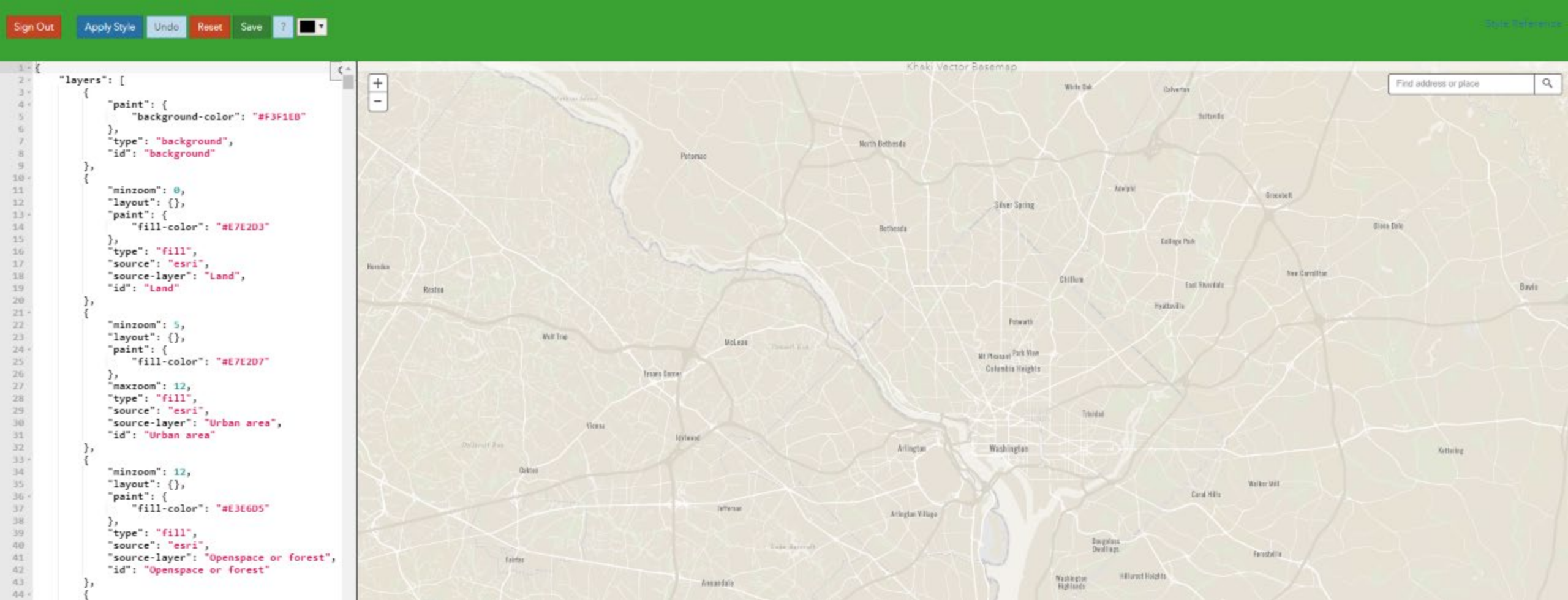


esriurl.com/VectorTileEditor

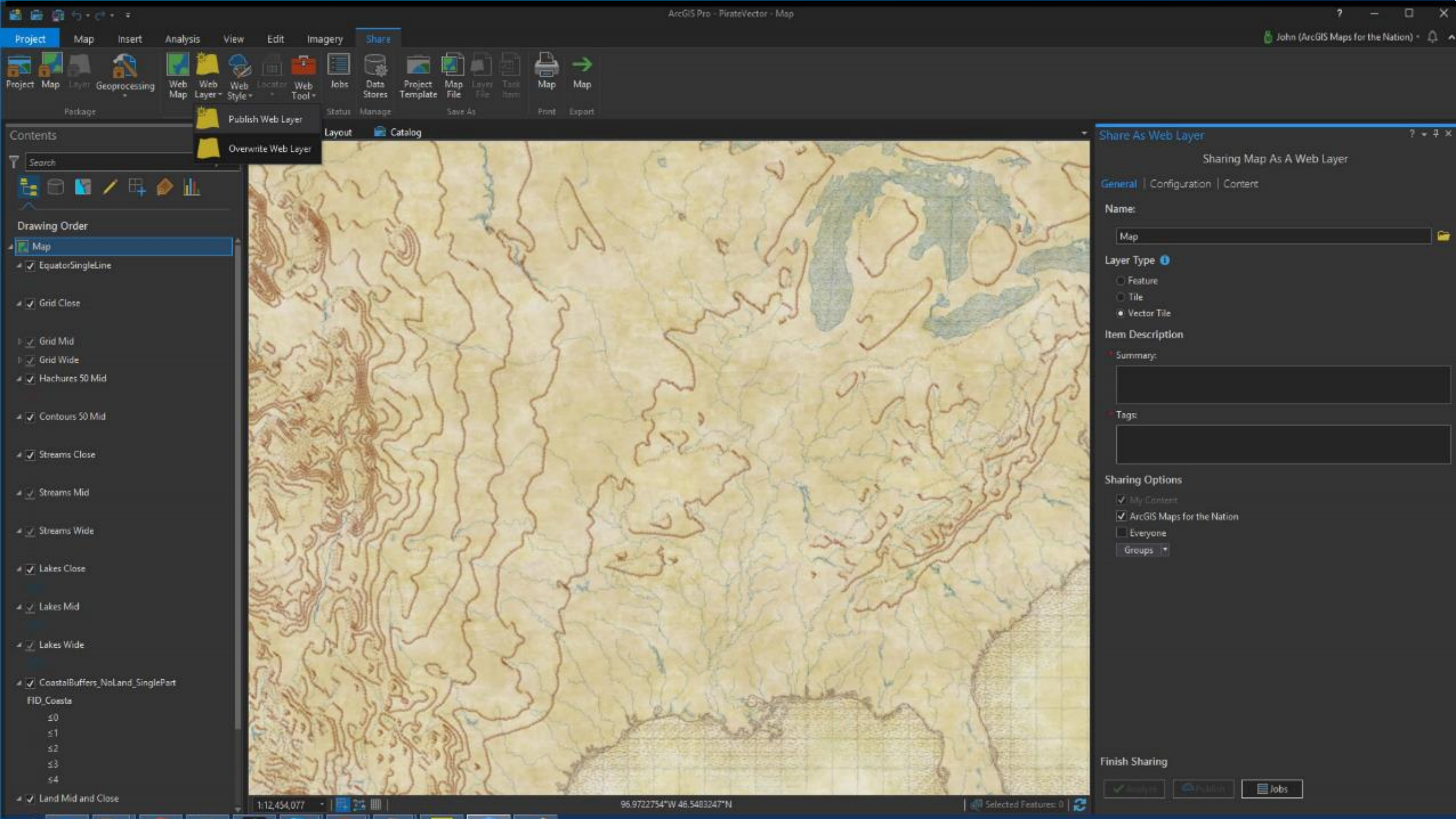



```
1- {
2-   "layers": [
3-     {
4-       "paint": {
5-         "background-color": "#F3F1EB"
6-       },
7-       "type": "background",
8-       "id": "background"
9-     },
10-    {
11-      "minzoom": 0,
12-      "layout": {},
13-      "paint": {
14-        "fill-color": "#E7E2D3"
15-      },
16-      "type": "fill",
17-      "source": "esri",
18-      "source-layer": "Land",
19-      "id": "Land"
20-    },
21-    {
22-      "minzoom": 5,
23-      "layout": {},
24-      "paint": {
25-        "fill-color": "#E7E2D7"
26-      },
27-      "maxzoom": 12,
28-      "type": "fill",
29-      "source": "esri",
30-      "source-layer": "Urban area",
31-      "id": "Urban area"
32-    },
33-    {
34-      "minzoom": 12,
35-      "layout": {},
36-      "paint": {
37-        "fill-color": "#E3E6D5"
38-      },
39-      "type": "fill",
40-      "source": "esri",
41-      "source-layer": "Openspace or forest",
42-      "id": "Openspace or forest"
43-    },
44-    {
45-      "layout": {},
46-      "paint": {
47-        "fill-color": "#E3E6D5"
48-      },
49-      "type": "fill",
50-      "source": "esri",
51-      "source-layer": "Admin0 forest or park",
52-      "minzoom": 12,
53-      "id": "Admin0 forest or park"
54-    },
55-    {
56-      "minzoom": 9,
57-      "layout": {},
58-      "paint": {
59-        "fill-color": "#E3E6D5"
60-      },
61-      "type": "fill",
62-      "source": "esri",
63-      "source-layer": "Admin1 forest or park",
64-      "id": "Admin1 forest or park"
65-    },
66-  ],
67- }
```

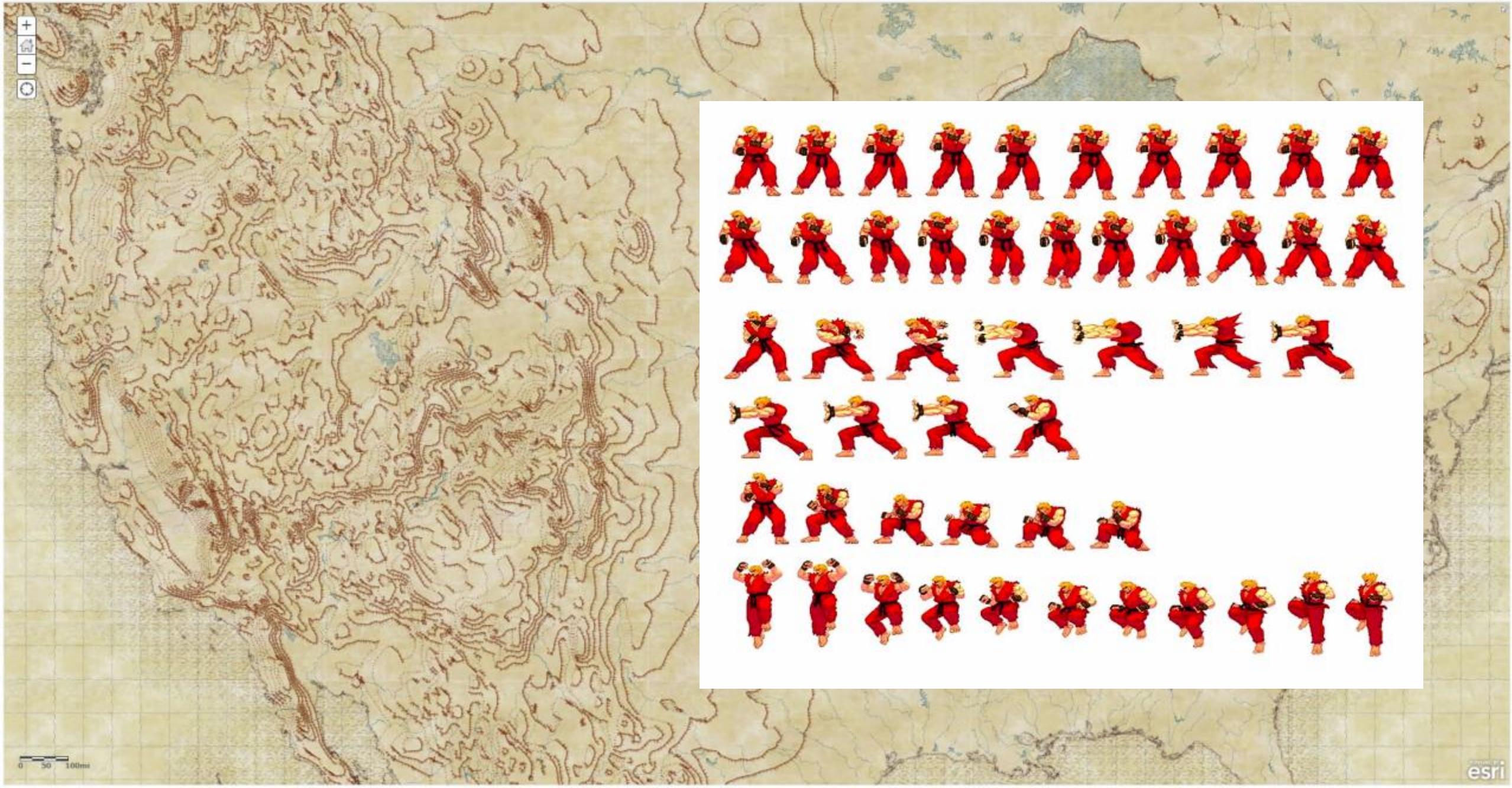




esriurl.com/VectorPowerEditor







BETA

Yarrrr!

Grid Close

Visibility

Visible

Visible Zoom Range

123

WorldBuildings

Appearance

Color

No Color

Pattern

Edit image in all layers

Grid Close

Opacity

ZoomValue

020%

9100%

Add Stop

Width

2px

Blur

1px

Position

Translate

x0y0

Equator Single Line

Global Background

Land Wide

Land Mid And Close

Coastal Buffers No Land Single Part

Lakes Wide

Lakes Mid

Lakes Close

Streams Wide

Streams Mid

Streams Mid

Streams Close

Contours 50 Mid

Hachures 50 Mid

Grid Wide

Grid Wide/Y

Grid Mid

Grid Mid/Y

Grid Close

Grid Close

Find address or place

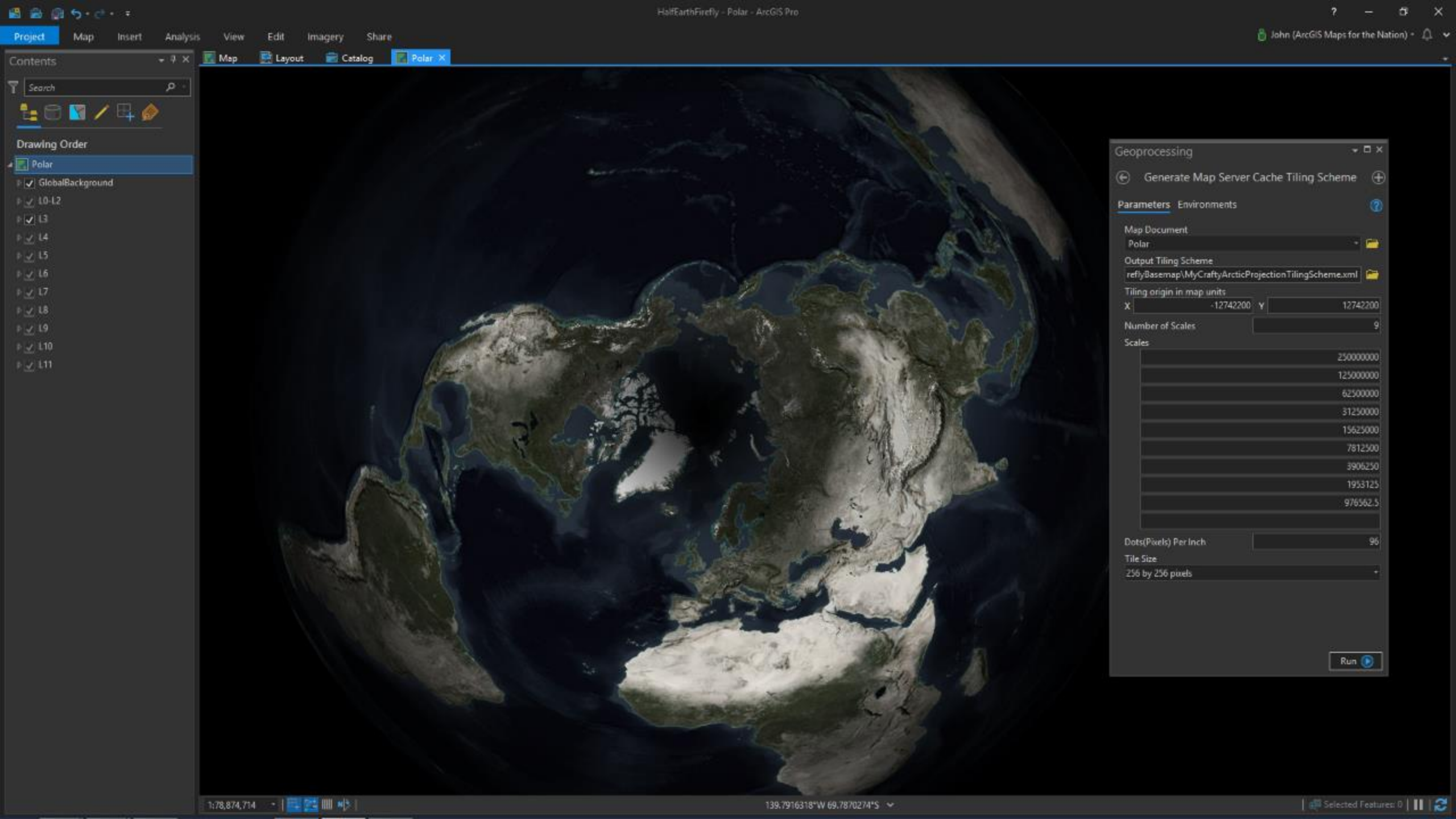
4

Powered by Esri

Powered by Esri

Powered by Esri

No BackgroundHillshadeImageryHide Minimaps



Drawing Order

- Polar
- GlobalBackground
- L0-L2
- L3
- L4
- L5
- L6
- L7
- L8
- L9
- L10
- L11

Geoprocessing

Generate Map Server Cache Tiling Scheme

Parameters Environments

Map Document

Polar

Output Tiling Scheme

reflyBasemap\MyCraftyArcticProjectionTilingScheme.xml

Tiling origin in map units

X -12742200 Y 12742200

Number of Scales

9

Scales

250000000

125000000

62500000

31250000

15625000

7812500

3906250

1953125

976562.5

Dots(Pixels) Per Inch

96

Tile Size

256 by 256 pixels

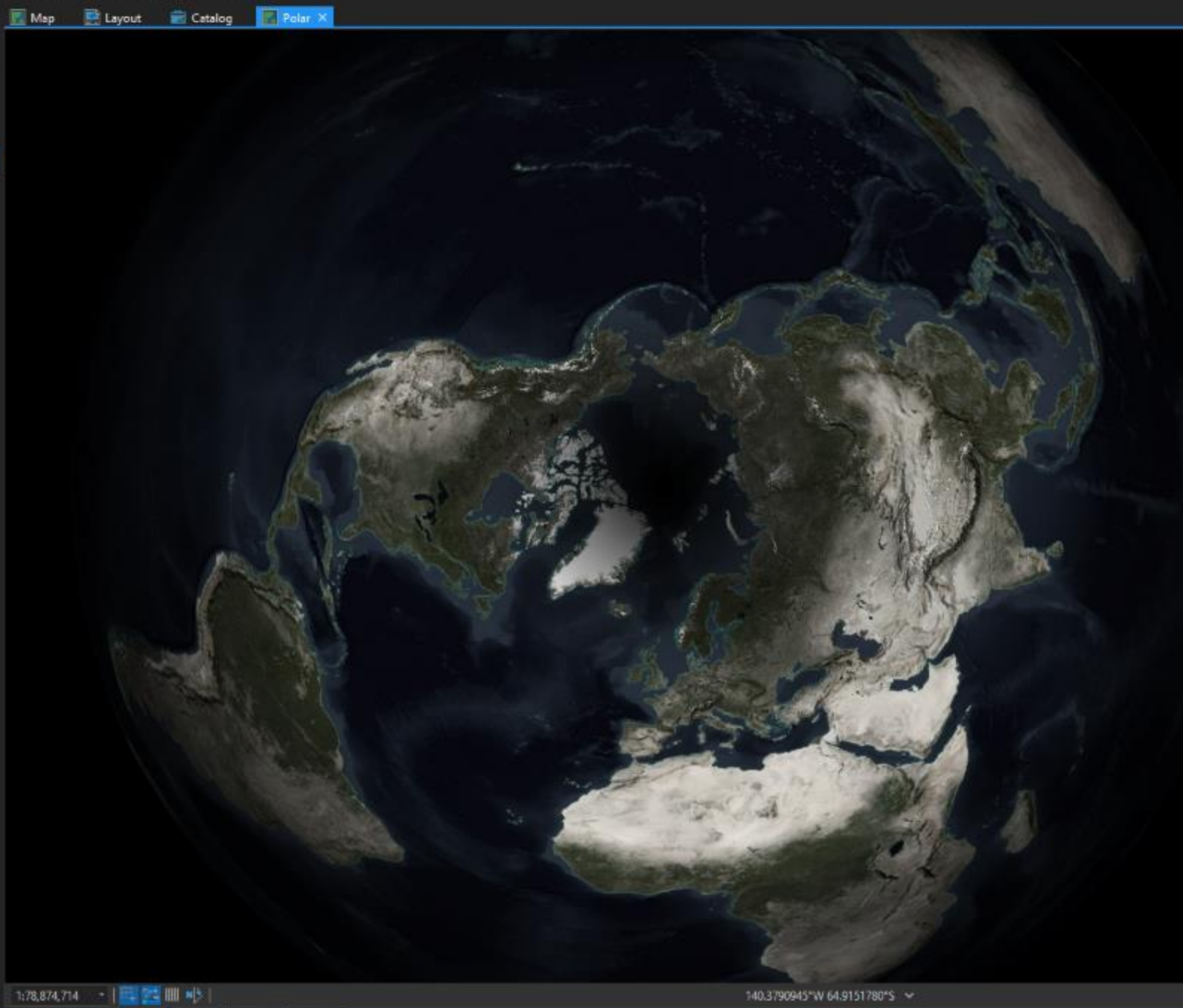
Run

Contents

Search

Drawing Order

- Polar
- GlobalBackground
- L0-L2
- L3
- L4
- L5
- L6
- L7
- L8
- L9
- L10
- L11



Geoprocessing

Create Map Tile Package

Parameters Environments

Input Map
Polar

☐ Package for ArcGIS Online | Bing Maps | Google Maps

Output File
F:\Tiles\Firefly\Firefly_Arctic.tpkx

Tiling Format
Mixed

Minimum Level Of Detail
0

Maximum Level Of Detail
8

Service
ArcticFireflyTilingScheme.xml

Summary
Arctic Firefly basemap

Tags
Firefly, Arctic

Extent
Default

Compression Quality
95

Package type
tpkx

Run

LivingAtlas.ArcGIS.com

esriurl.com/LivingAtlasBasemaps
esriurl.com/HumanGeographyBase
esriurl.com/DOSbase
esriurl.com/ClarityBase
esriurl.com/WGS84Base

How-Tos and Editors

esriurl.com/VectorTileEditor
esriurl.com/VectorPowerEditor

Documentorium

esriurl.com/DesignBasemaps
esriurl.com/VectorDoc
esriurl.com/BasemapBlog

Andrew Skinner

Askinner@esri.com
[https://www.esri.com/arcgis-
blog/author/ajskinner2/](https://www.esri.com/arcgis-blog/author/ajskinner2/)

John Nelson

John_Nelson@esri.com
[@john_m_nelson](https://twitter.com/john_m_nelson)
esriurl.com/Nelson
esriurl.com/JohnNelsonStories

