



„The electric light did not come from the continuous improvement of candles.“

Oren Harari



Facing the Digital Transformation with ArcGIS Hub

Stefan Schnitzhofer
San Diego | 2019-07-09



The Ministry – Portfolio



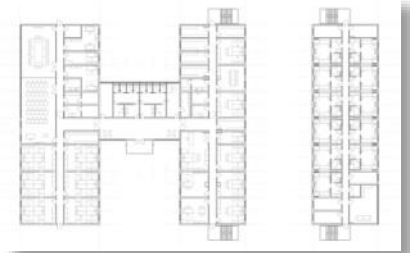
Images: www.stmb.bayern.de



State Building Administration

Building Construction

- » Planning, building & maintaining
- » State, federal government & other clients
- » > 25.000 buildings on 5.000 properties
 - Administrative buildings, police and judicial buildings
 - Museums, theatres
 - Castles and churches
 - Colleges, universities, clinics
 - Military buildings





State Building Administration

Bavarian Road Administration

» Planning, building, maintaining & operating

» Roads

- Motorways: 2.500 km
- Federal roads: 6.000 km
- State roads: 14.500 km
- County roads: 3.000 km

» 14.900 bridges

» > 60 tunnels



Images: www.stmb.bayern.de



Digital Transformation

Challenges for public administrations

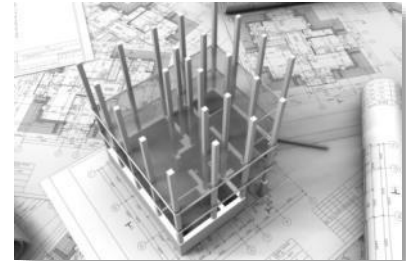
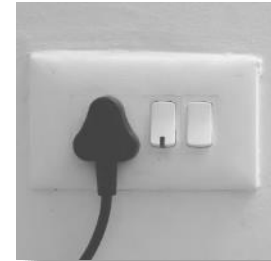




Digital Transformation of StMB

Section „Digitalization“

- » Strategy development
- » Digitalization of processes
- » Geoinformation Systems & Spatial Data Infrastructure
- » IT Security

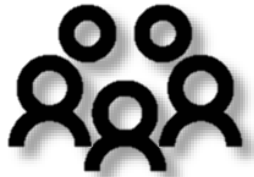


Images: pixabay.com



Dimensions of Digitalization

Stakeholder



Processes



Data



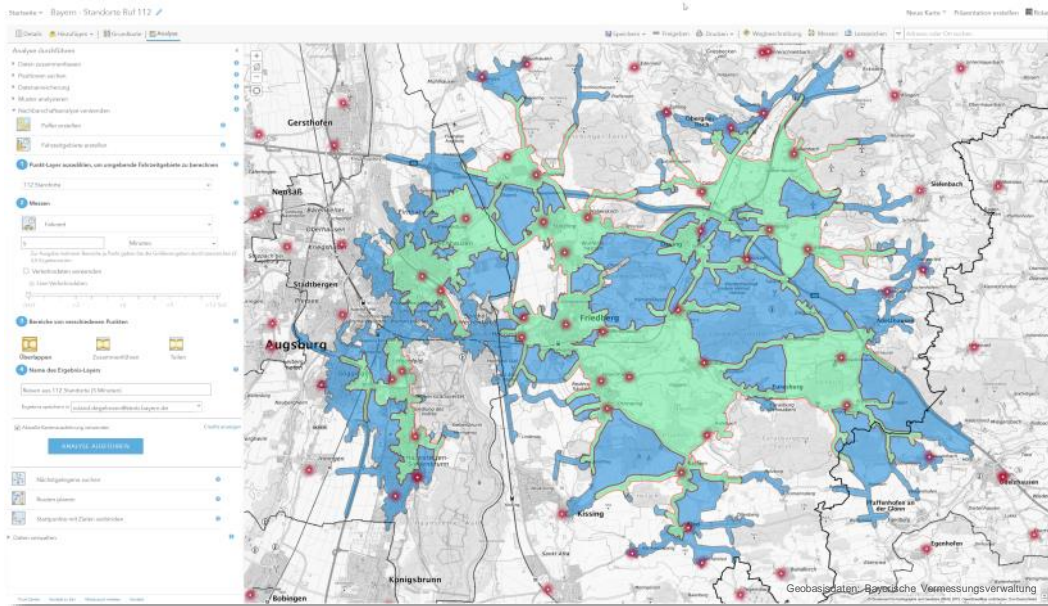
Technologies



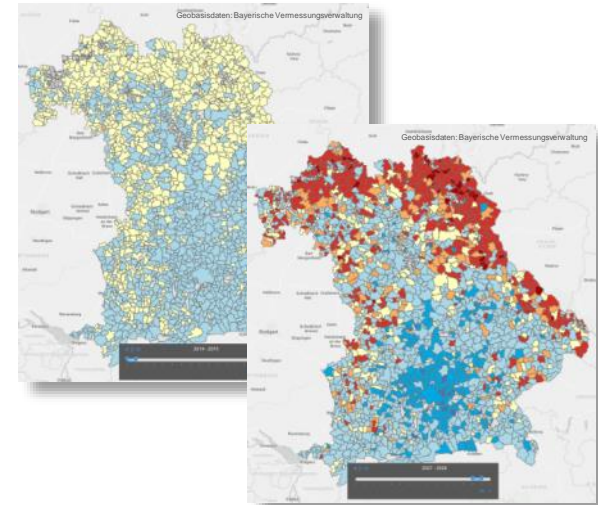


ArcGIS Platform

Supporting the digital transformation



Analysis

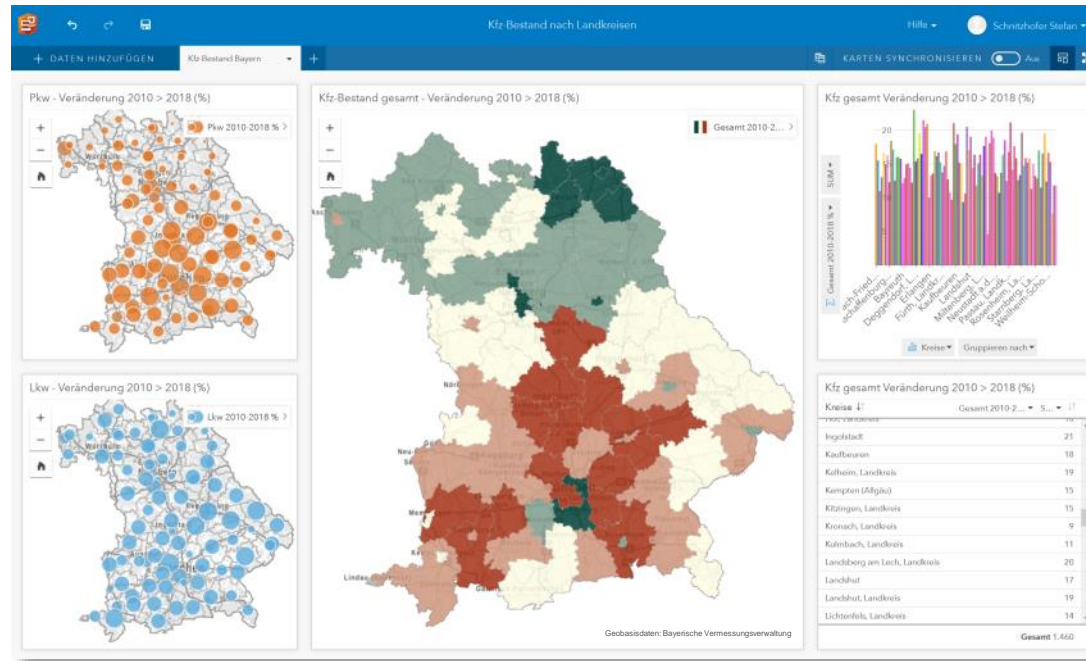




ArcGIS Platform

Supporting the digital transformation

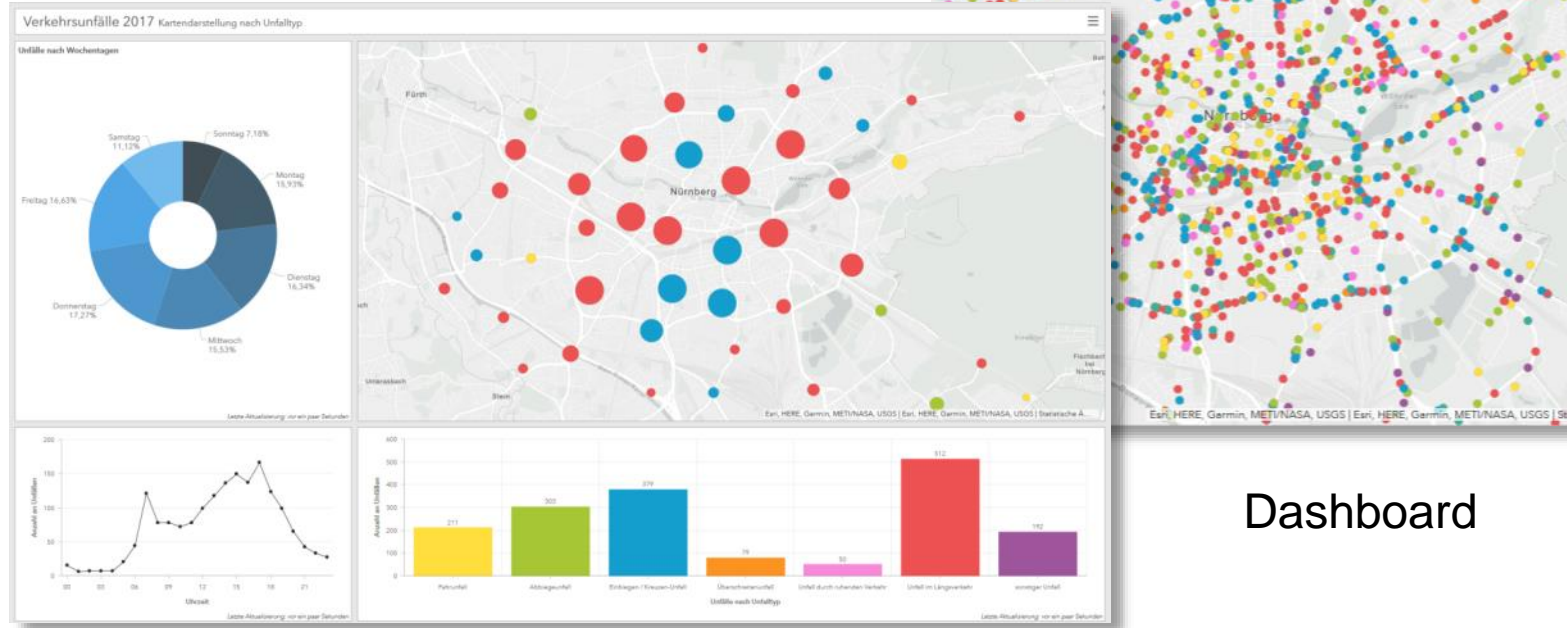
Insights





ArcGIS Platform

Supporting the digital transformation



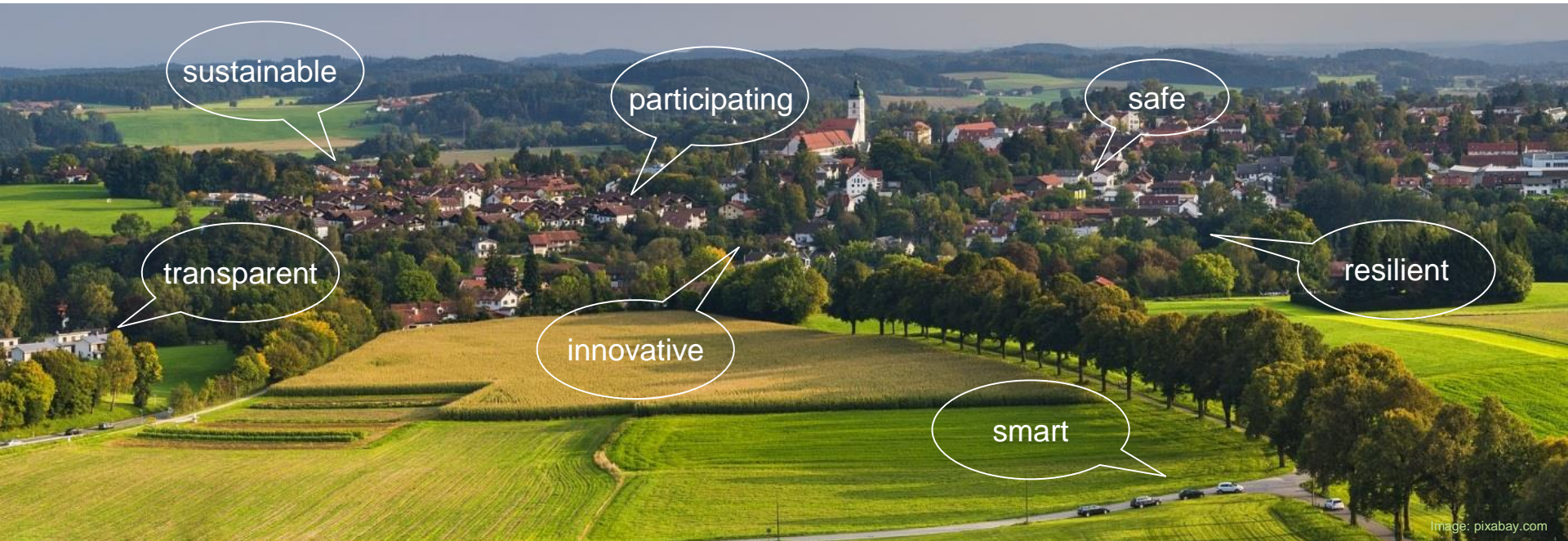
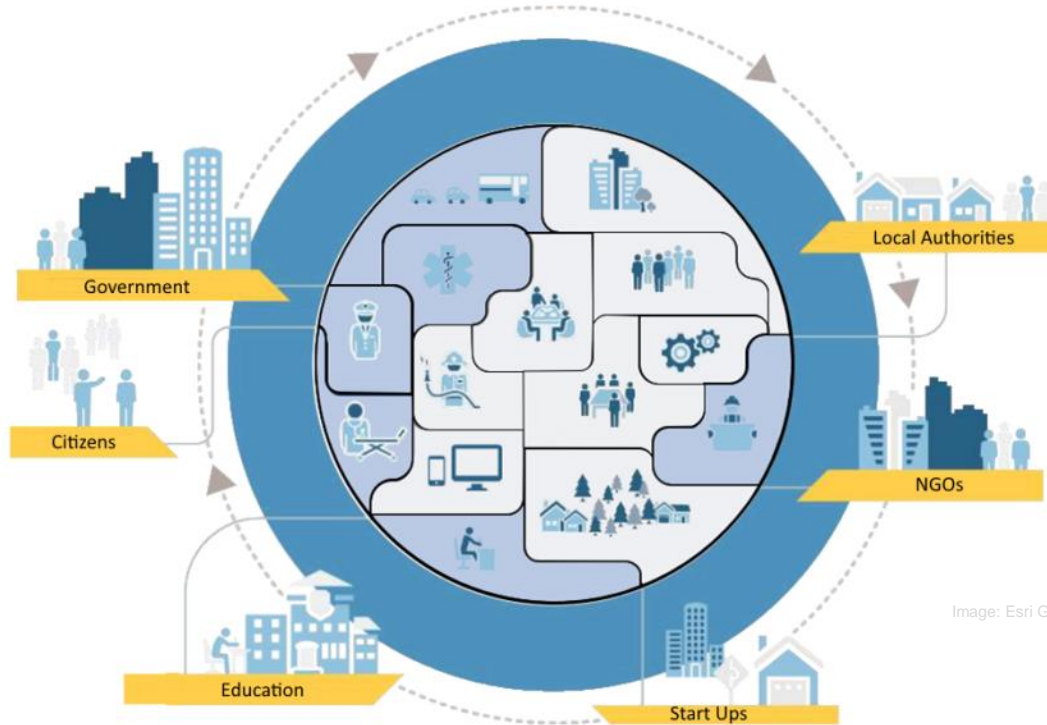


Image: pixabay.com

ArcGIS Hub

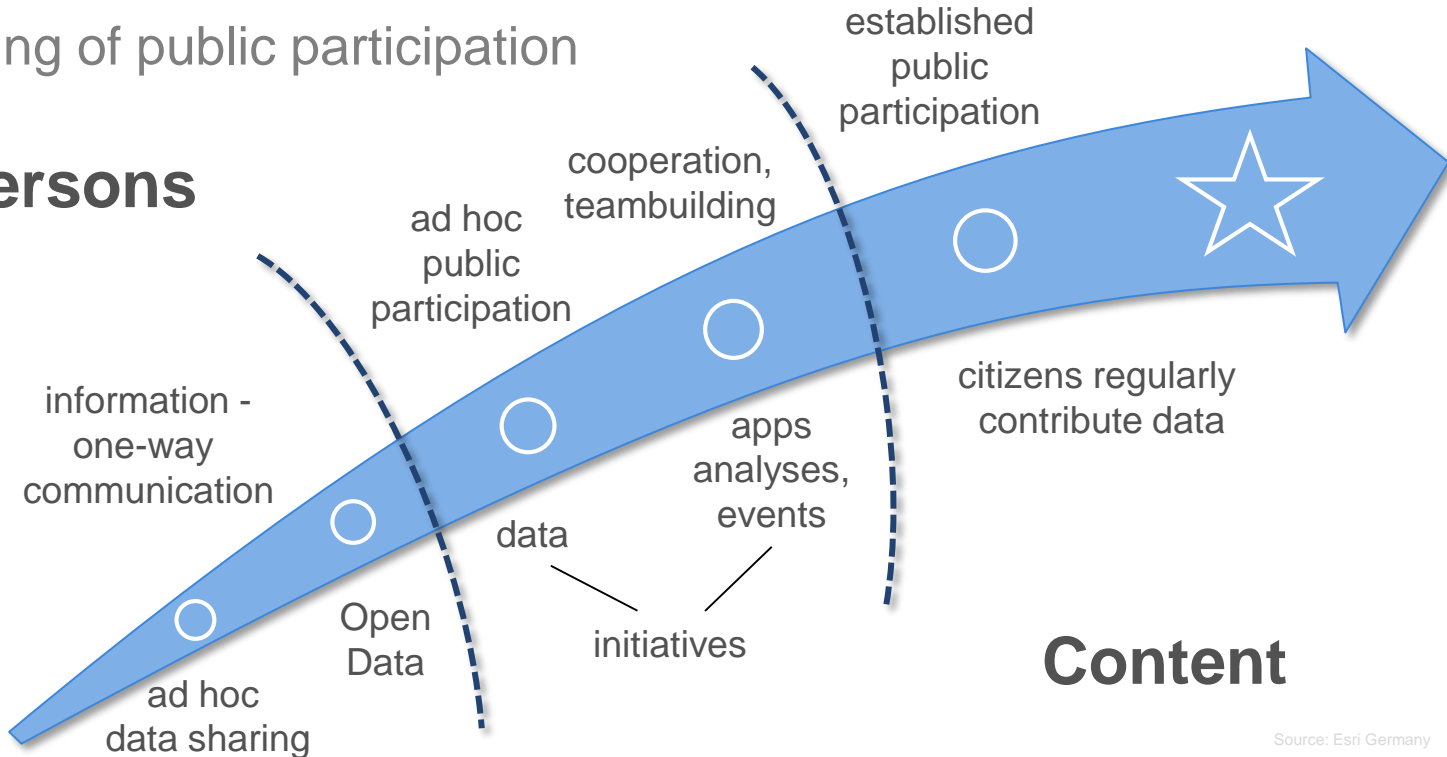




ArcGIS Hub

Ripening of public participation

Persons



Source: Esri Germany





Ready for ArcGIS Hub?

Blueprint Workshop - Topics

Leadership & Governance	Strategy & Workflows	Technology & Data	Training & Culture	Engagement
Executive Leadership	Strategic Alignment	GIS Infrastructure	Thinking Spatially	Citizen & Press Engagement
Management Team	Location Value Assessment	Data	Culture of Innovation	Tech Sector & Business Community Collaboration
Internal Champions	Initiatives	Initiative Applications	Enterprise Collaboration	NGO Collaboration
GIS Professionals	Performance Tracking	Destination Website	Training and Education	Academia Partnerships

Source: Esri Germany





Ready for ArcGIS Hub?

Blueprint Workshop - Scorecard

Leadership & Governance		Strategy & Workflows		Technology & Data		Training & Culture		Engagement	
Executive Leadership		Strategic Alignment		GIS Infrastructure		Thinking Spatially		Citizen & Press Engagement	
Management Team		Location Value Assessment		Data		Culture of Innovation		Tech Sector & Business Community Collaboration	
Internal Champions		Initiatives		Initiative Applications		Enterprise Collaboration		NGO Collaboration	
GIS Professionals		Performance Tracking		Destination Website		Training and Education		Academia Partnerships	
Total		Total		Total		Total		Total	
								Overall Score	

Source: Esri Germany





Ready for ArcGIS Hub?

Blueprint Workshop - Scorecard

Leadership & Governance		Strategy & Workflows		Technology & Data		Training & Culture		Engagement	
Executive Leadership	7	Strategic Alignment	5	GIS Infrastructure	8	Thinking Spatially	7	Citizen & Press Engagement	6
Management Team	4	Location Value Assessment	4	Data	8	Culture of Innovation	7	Tech Sector & Business Community Collaboration	6
Internal Champions	6	Initiatives	8	Initiative Applications	8	Enterprise Collaboration	8	NGO Collaboration	6
GIS Professionals	9	Performance Tracking	7	Destination Website	7	Training and Education	5	Academia Partnerships	7
Total	26	Total	24	Total	31	Total	27	Total	25
Rating from 1 (weak) to 10 (excellent)								Overall Score	133

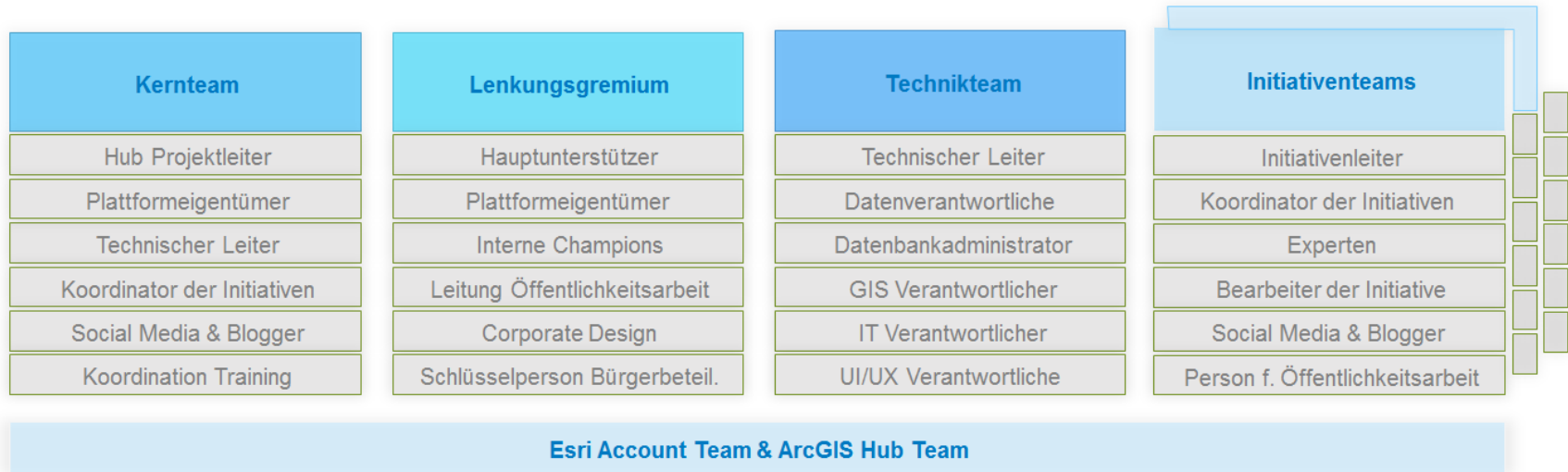
Source: Esri Germany





Ready for ArcGIS Hub?

ArcGIS Hub Team



Source: Esri Germany





Ready for ArcGIS Hub!

SWOT Analysis

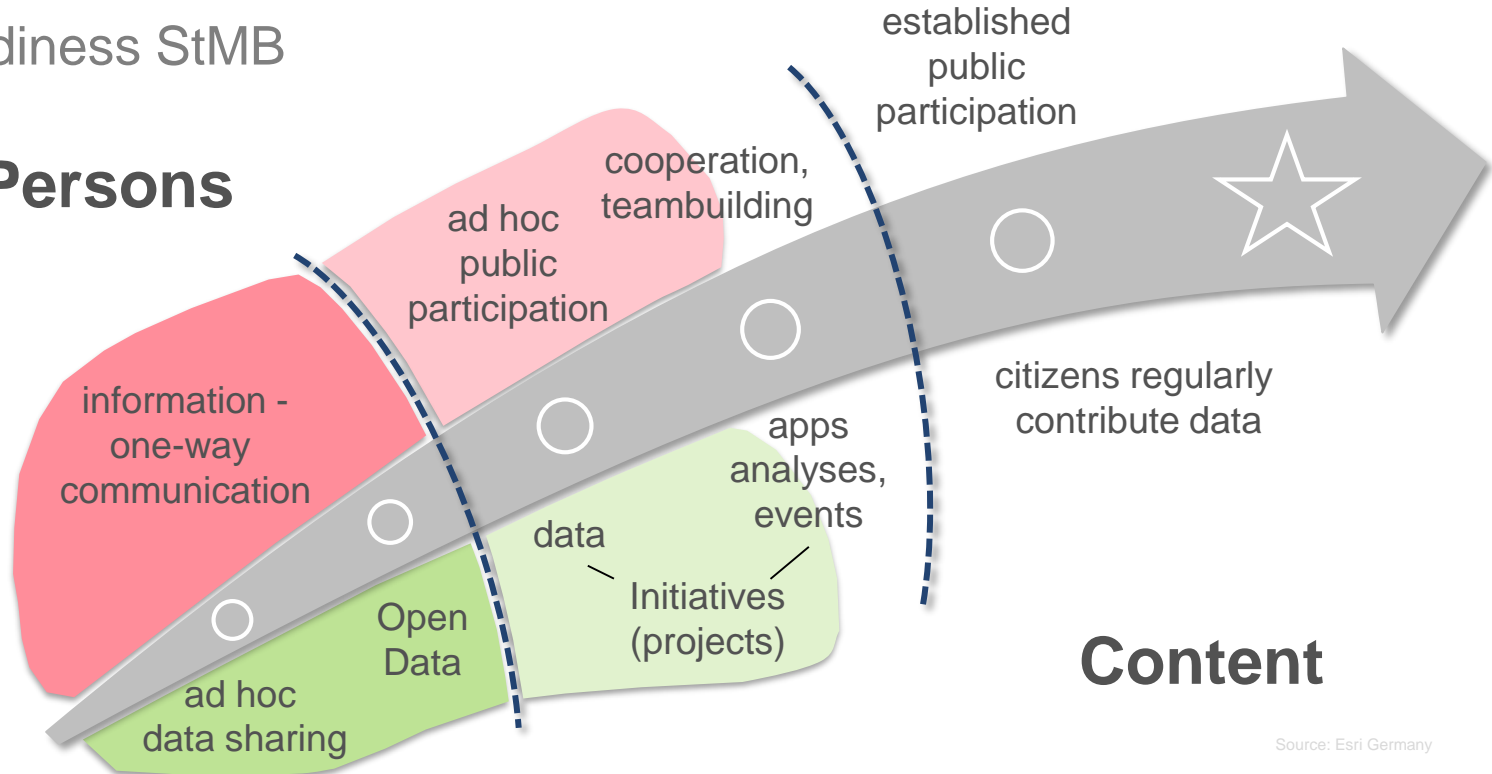
Strengths	<ul style="list-style-type: none">• Availability of Geodata/Open Data (⇒ Webservices)• ArcGIS expertise• Internal support & interaction• Potential for initiatives	Weaknesses	<ul style="list-style-type: none">• staff resources• Awareness of the potential of geodata• Interaction with the PR department
Opportunities	<ul style="list-style-type: none">• Establish spatial relevant applications at StMB• Intensify cooperation between departments• Improved interaction with the public• Increase in public acceptance	Threats	<ul style="list-style-type: none">• Missing staff resources for Hub setup and initiatives• Missing support for initiatives• Effort for Hub setup is underestimated• GIS infrastructure under reconstruction



ArcGIS Hub

Readiness StMB

Persons



Content

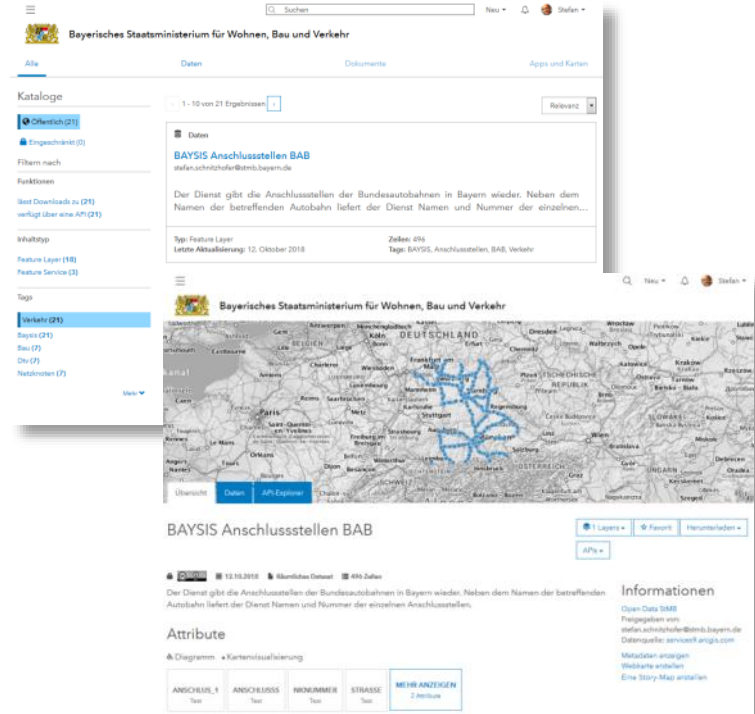
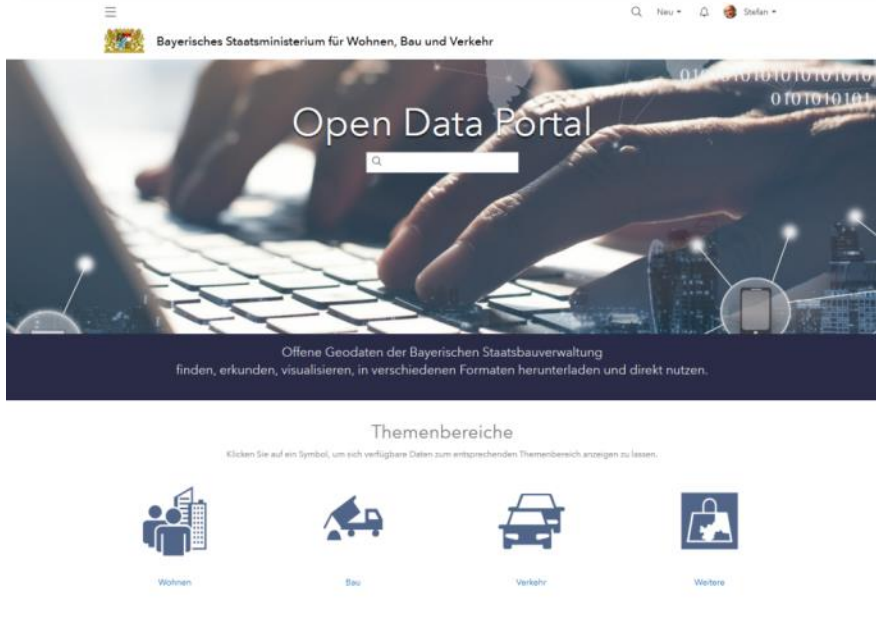
Source: Esri Germany





ArcGIS Hub

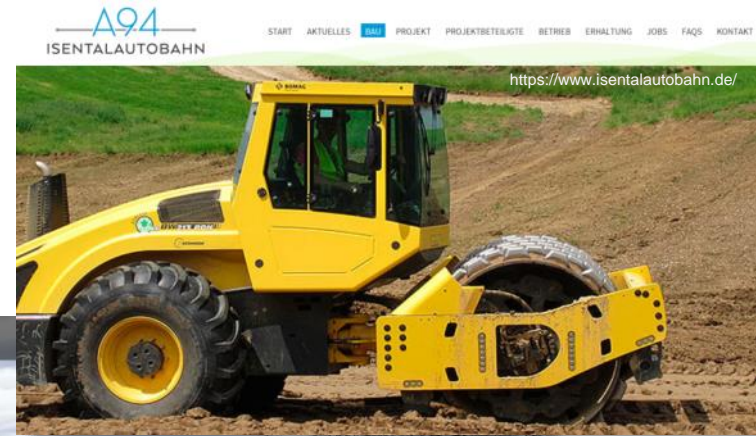
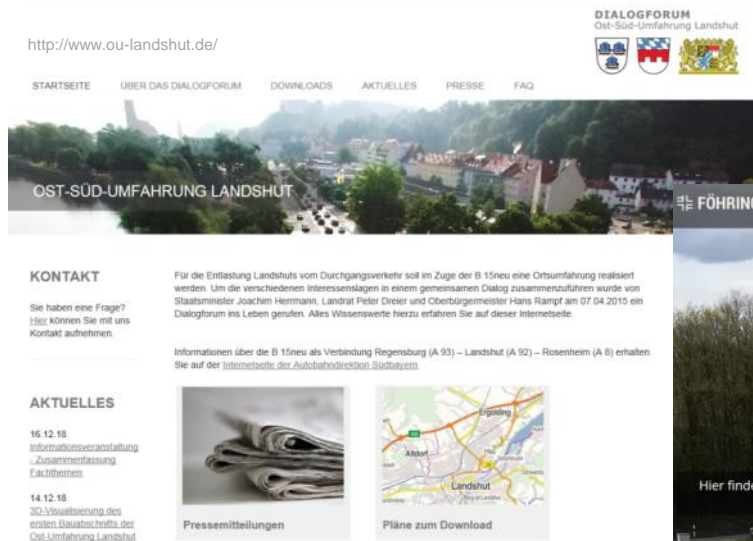
Open Data Portal StMB





ArcGIS Hub

Construction Projects



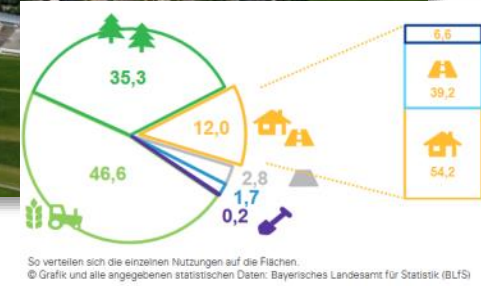


ArcGIS Hub

Discussed Initiatives



space management





ArcGIS Hub

Discussed Initiatives



work safety



accessibility



Images: pixabay.com



Thank you for your attention!



Image: pixabay.com