



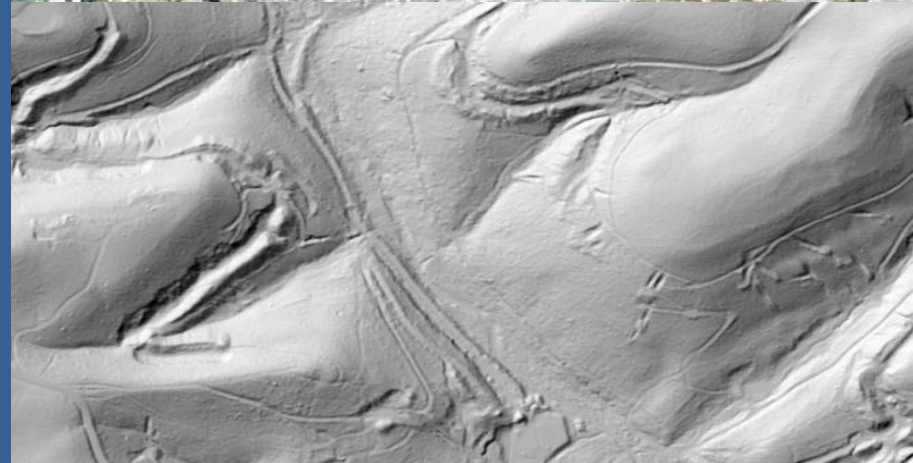
Department of  
**Finance &  
Administration**



# Tennessee's Statewide LiDAR Initiative

*Empowering GIS Users Across the  
State*

Paul Dudley, State of TN: STS-GIS Analyst  
Sam Moffat, Woolpert: Government Solutions Program Director



# TN Basemapping Program USGS 3D Elevation Program



Evaluate needs and use cases

Fuel the GIS community with  
access and training



Statewide Coordination

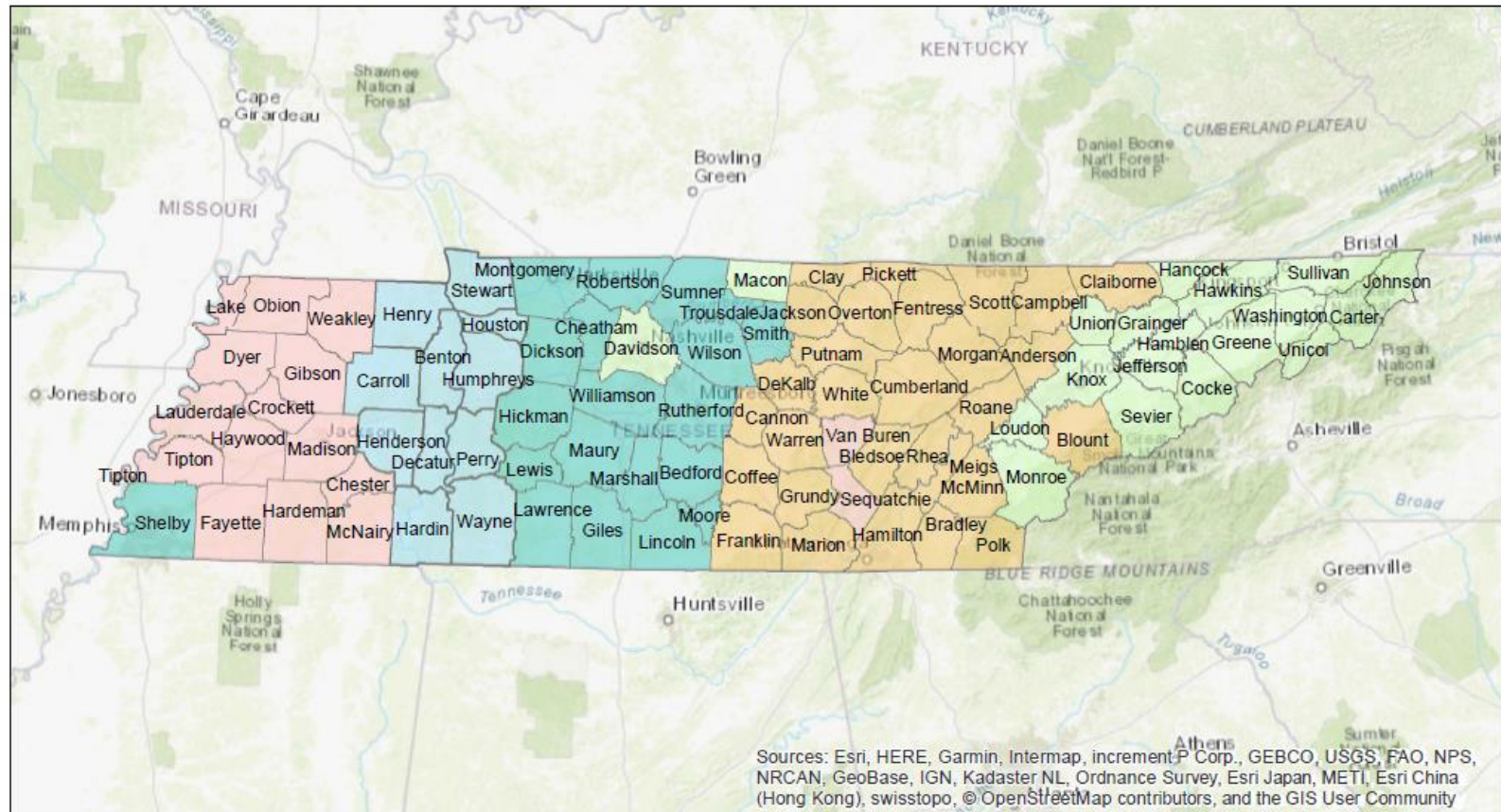
Data collection/delivery



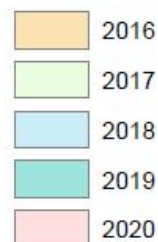
Provide easier access to training and data products

Return on investment and the future

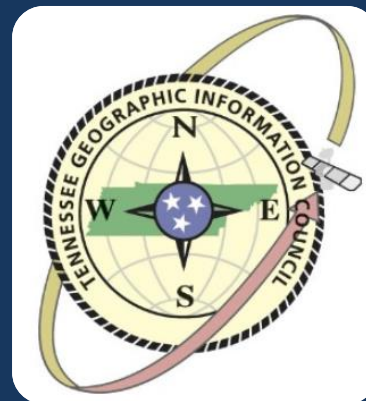
# Tennessee 3DEP Lidar Delivery Schedule

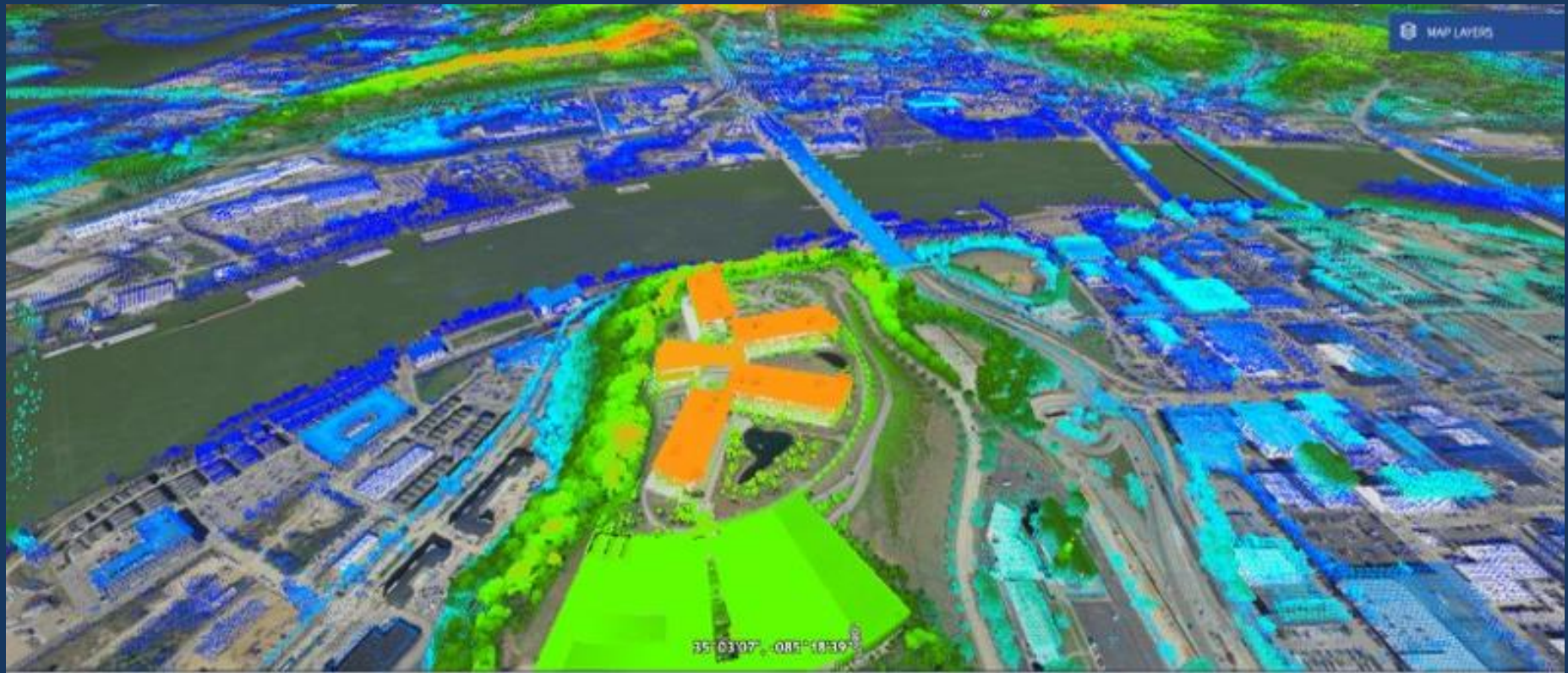


## Legend









218 Billion Points  
32TB

How can we  
empower GIS users  
with this data?



# EVALUATION AND TRAINING PLANNING

Content?

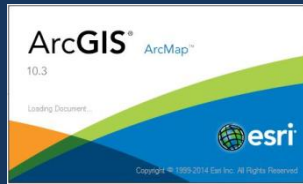
1

Monetary support?  
Venue support?

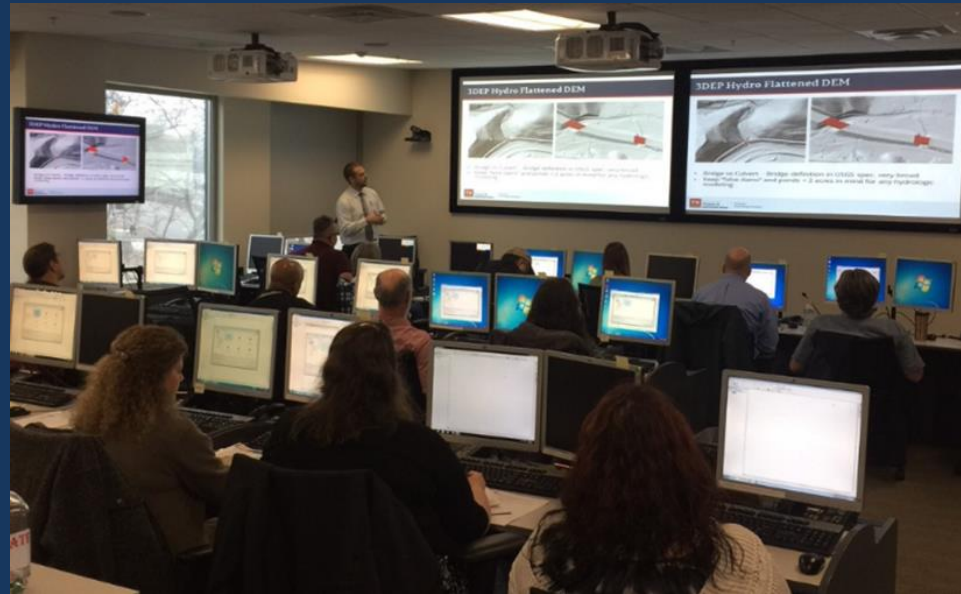




# TRAINING!



Loading Document...



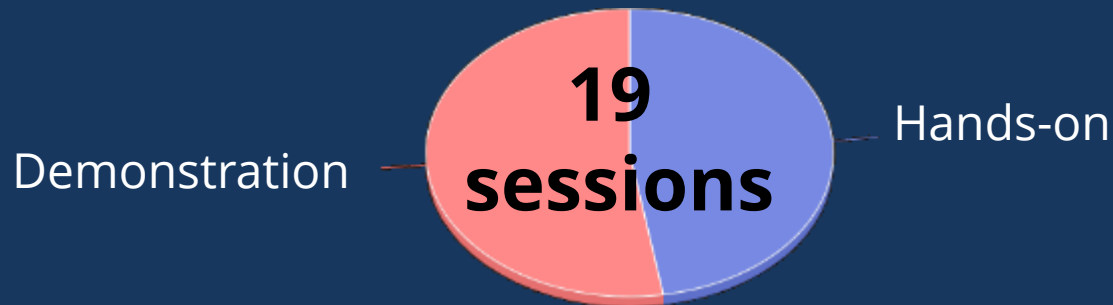
## Introduction to Lidar Data Utilizing ESRI ArcMap (now ArcGIS Pro)

- ④ LiDAR basics
- ④ 3DEP specifics and accuracy
- ④ Products and common use cases
- ④ ESRI capabilities
  - Point cloud navigation (LAS Dataset creation)
  - DEM and Mosaic Dataset workflows
  - Contour generation
  - Export to CAD
- ④ Data access and alternative software



# IMPACT THUS FAR

- Empowered 350+ GIS users across the state



- Informed new users/customers
- Enabled workflow and use case sharing
- Strengthened statewide partnerships for future data acquisitions

# KEYS FOR SUCCESS



TNGIC: Statewide Non Profit User Group

- Statewide partnerships
- Data storage
- Monetary support



Support from State GIS Office



Motivated Individuals



Partnership with ESRI (statewide standard)

# LINK ELMORE



3D Building Extraction

Land Use Classification

Contours



# SUNNY FLEMING



State Park Planning

Archeological Identification



# UNIVERSITY STUDENTS



Stormwater  
Management

Solar Feasibility

Post Wildfire  
Vegetation  
Analysis



Riparian Studies



Bluff Habitat Identification

# ULTIMATE BENEFICIARIES

Citizens of Tennessee

(and some surrounding states)

More efficient government

Better designed infrastructure

Improved safety

Private sector productivity

Improved conservation and land management



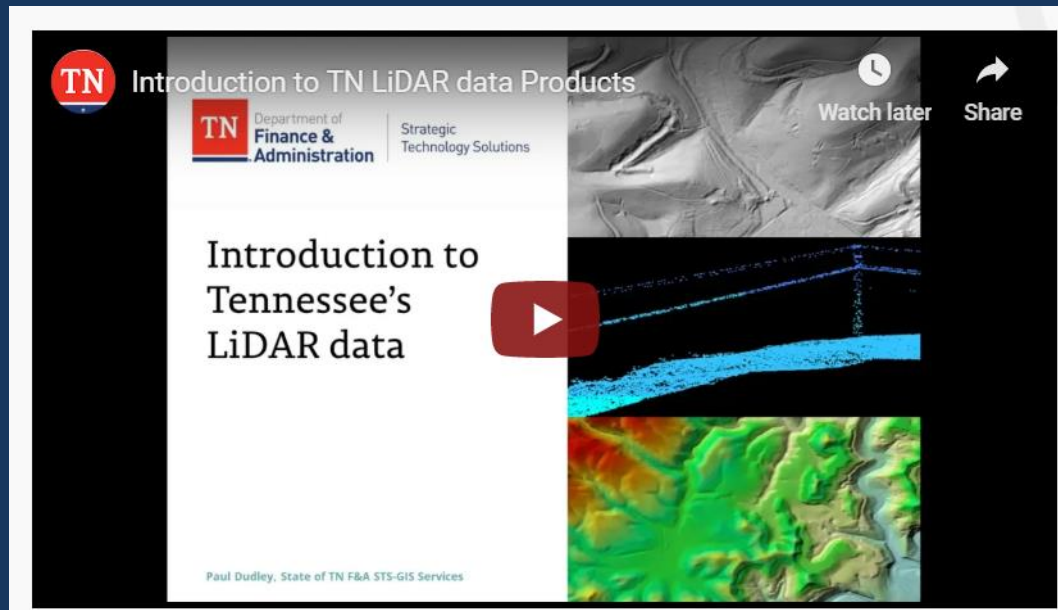
# MOVING FORWARD

CONTINUE AND IMPROVE TRAINING!

RECORDING TRAINING MATERIAL

CREATE EASIER METHODS FOR ACCESS

DATA DELIVERY COMPLETE ~ JUNE 2020



# QUESTIONS ?



TNMAP.TN.GOV

Paul Dudley  
[Paul.Dudley@tn.gov](mailto:Paul.Dudley@tn.gov)  
615-770-3809



WOOLPERT.COM

Sam Moffat  
[Sam.Moffat@woolpert.com](mailto:Sam.Moffat@woolpert.com)  
865-621-2984