



© SRP

How we went Pro: SRP's journey in adopting ArcGIS Pro.



Brian Colson, GISP
SRP Cartographic & GIS Services
Brian.Colson@srpnet.com



C:\arcgis\arcexe10x\bin\arc.exe



Copyright (C) 1982-2010 Environmental Systems Research Institute, Inc.
All rights reserved.
ARC 10.0 (Fri May 14 12:15:53 PDT 2010)

This software is provided with RESTRICTED AND LIMITED RIGHTS. Use, duplication, and disclosure by the U.S. Government are subject to restrictions as set forth in FAR Section 52.227-14 Alternate III (g)(3) (JUN 1987), FAR Section 52.227-19 (JUN 1987), and/or FAR Section 12.211/12.212 [Commercial Technical Data/Computer Software] and DFARS Section 252.227-7015 (NOV 1995) [Technical Data] and/or DFARS Section 227.7202 [Computer Software], as applicable. Contractor/Manufacturer is Environmental Systems Research Institute, Inc., 380 New York Street, Redlands, CA 92373-8100, USA.

Arc: _



Delivering water and power™

Agenda

Overview: Salt River Project (SRP)

Strategic Testing Plan

Grass Roots Effort “Sub-Group”

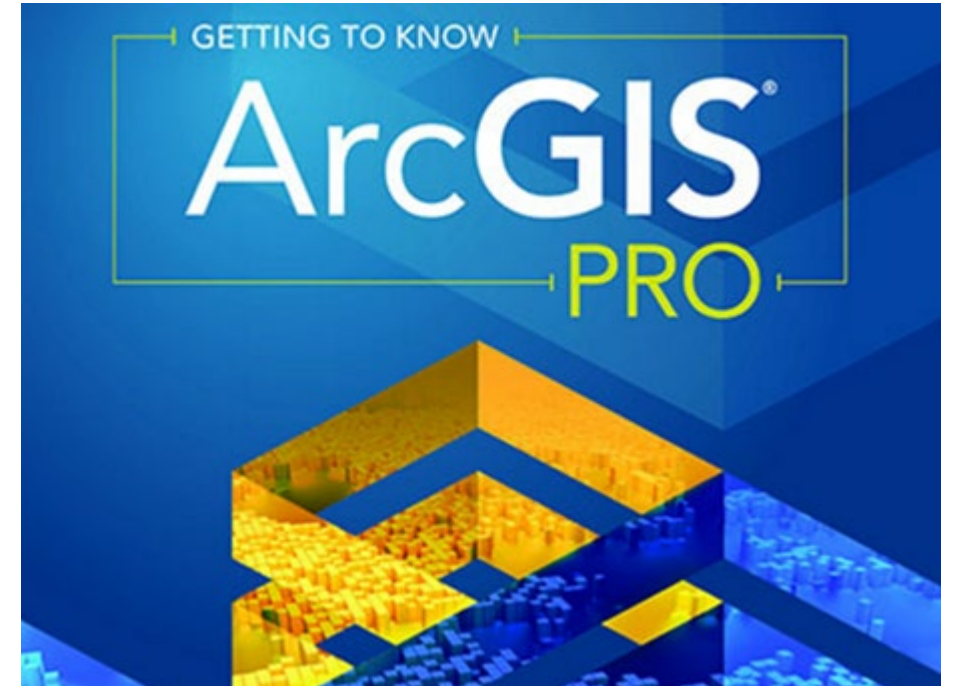
Development Opportunities

- ArcGIS Pro SDK
- Python 3.6

Training Strategy

Deployment

Utilization



SRP: Community-based not-for-profit Energy Company, Phoenix AZ

Water

- 375 sq. mi. service area
- 13,000 sq. mi. Watershed
- 2.3 + million acre-feet storage capacity

Power

- 2,900 sq. mi. service area
- 1 Million + Customers
- 8,000 + MW generation capacity

Team

- 5,000 + Employees
- *Forbes* Top Employer 2019
- <https://www.srpnet.com/>



Overview of GIS at SRP

Cartographic & GIS Services

- Division of Community, Communications & Marketing
- Water System GIS
- Environmental Compliance GIS
- Internal & External Custom Mapping & Analysis

Enterprise Spatial & Mobility Services

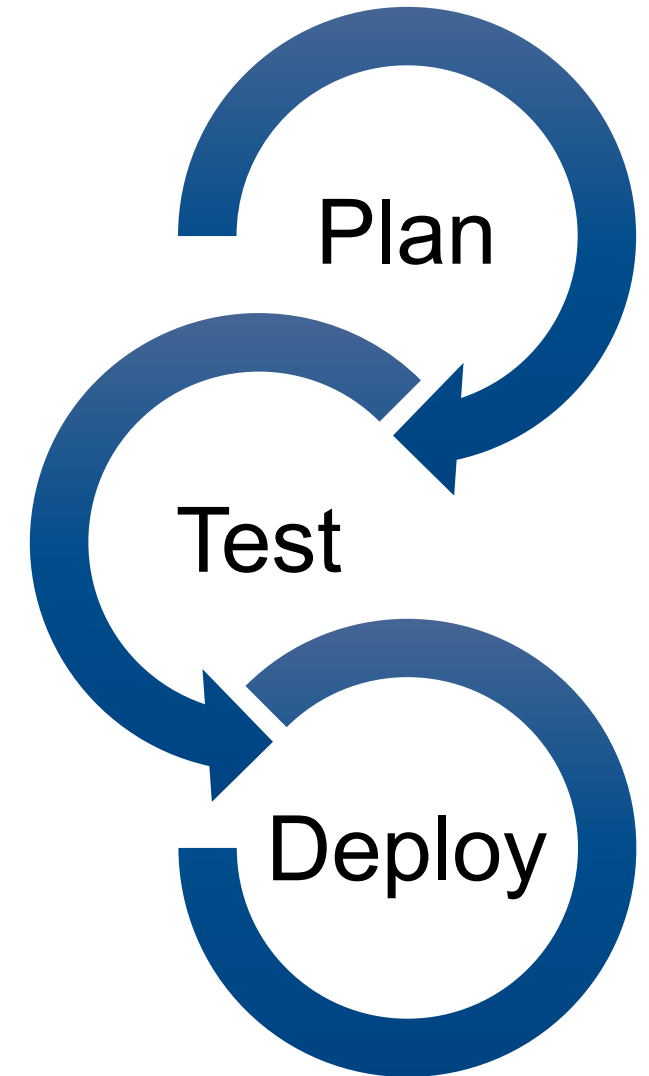
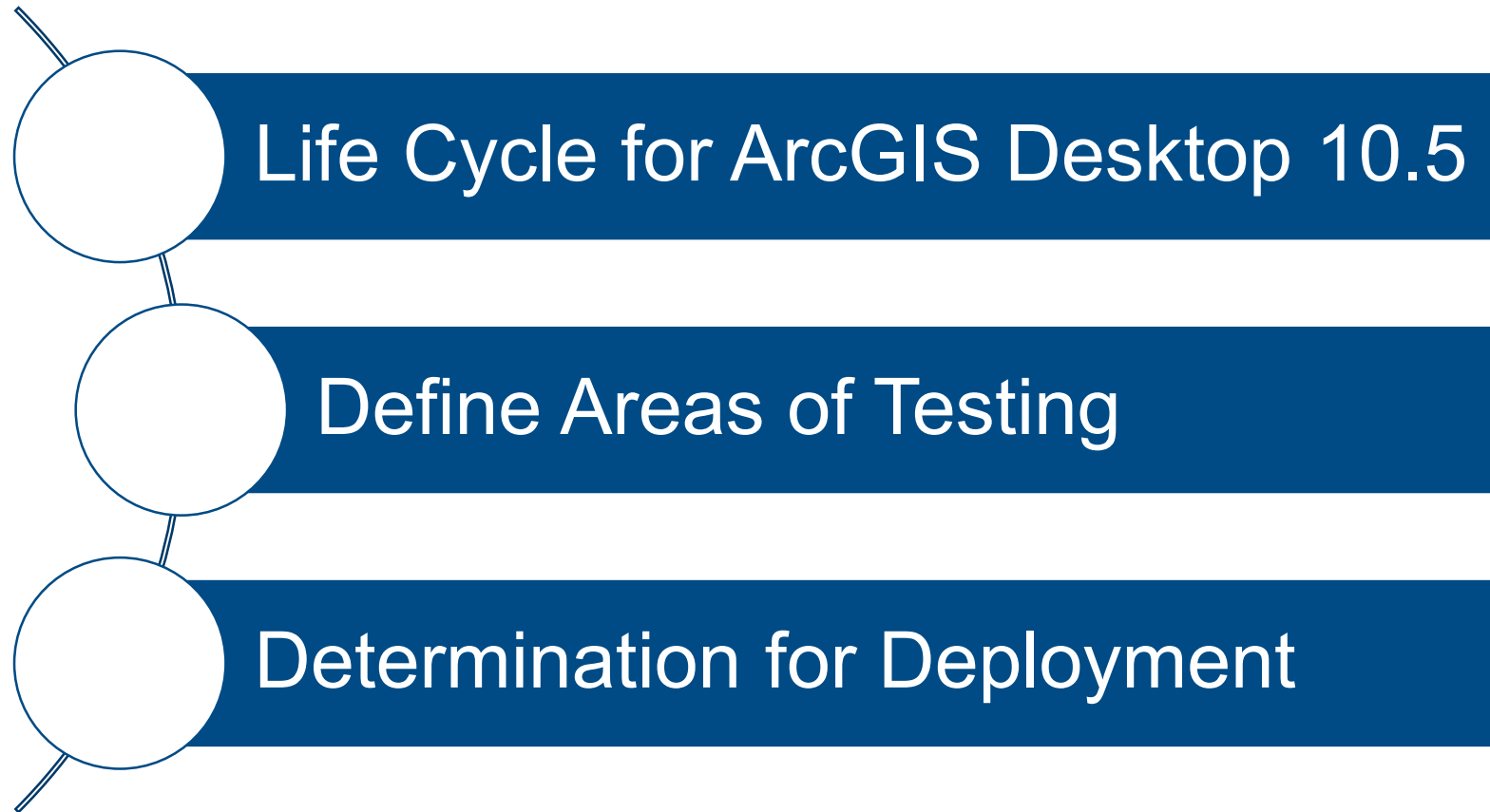
- Division of Information Technology Services
- GIS Infrastructure Support
- Electrical System GIS
- Web GIS & Mobile Application Development

Other GIS Maintenance

- Corporate Secretary's Office
- Distribution Services & Operations
- Transmission Line Design
- Land Department



ArcGIS Pro Strategic Testing Plan: April 2017



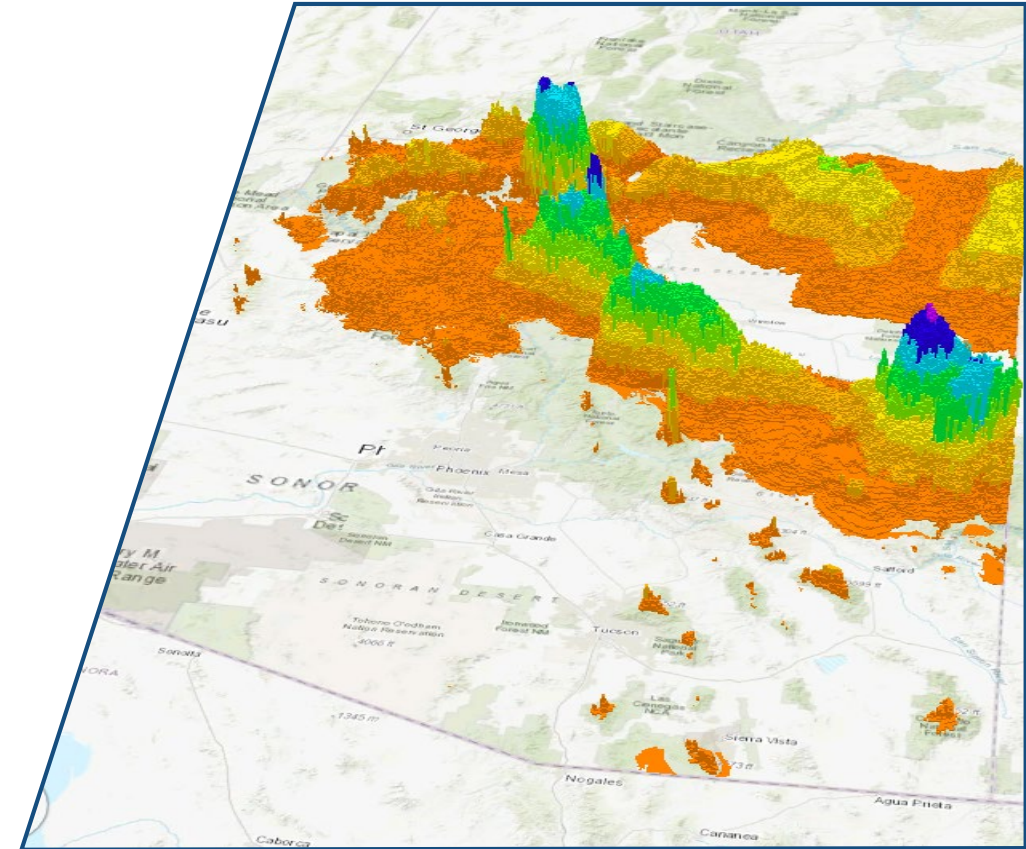
ArcGIS Pro Sub-Group: May 2017 – August 2018

10 Members

- All analysts level
- Wide breadth of knowledge, experience & expertise

Monthly Meetings

- Teleconference as needed



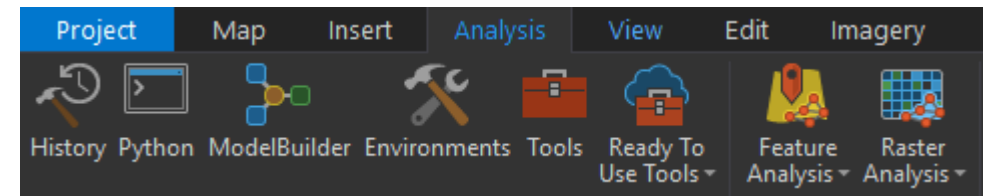
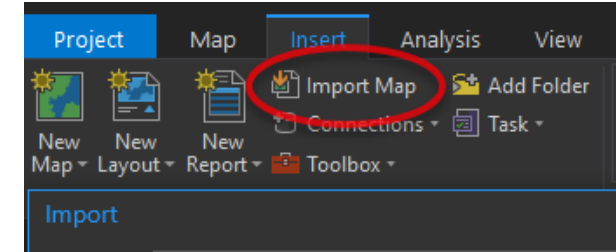
ArcGIS Pro Sub-Group Strategic Testing

Desktop (Windows) rollout

Conversion from prior .mxd

Editing & Geoprocessing functionality

Web connectivity

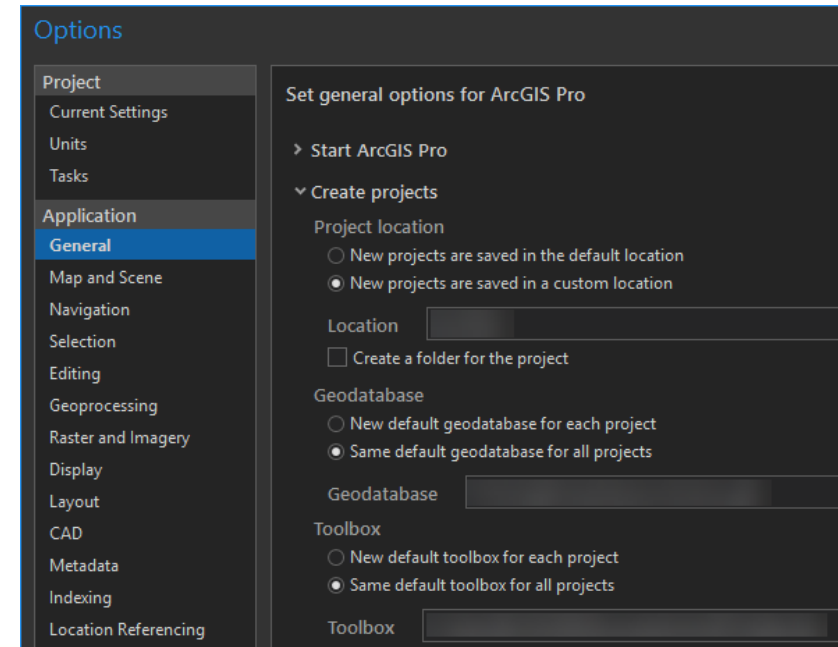
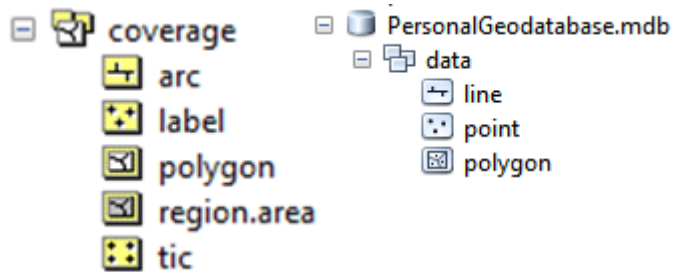


ArcGIS Pro Sub-Group Strategic Testing

Mapping functionally (2D & 3D)

File & data usage within .aprx

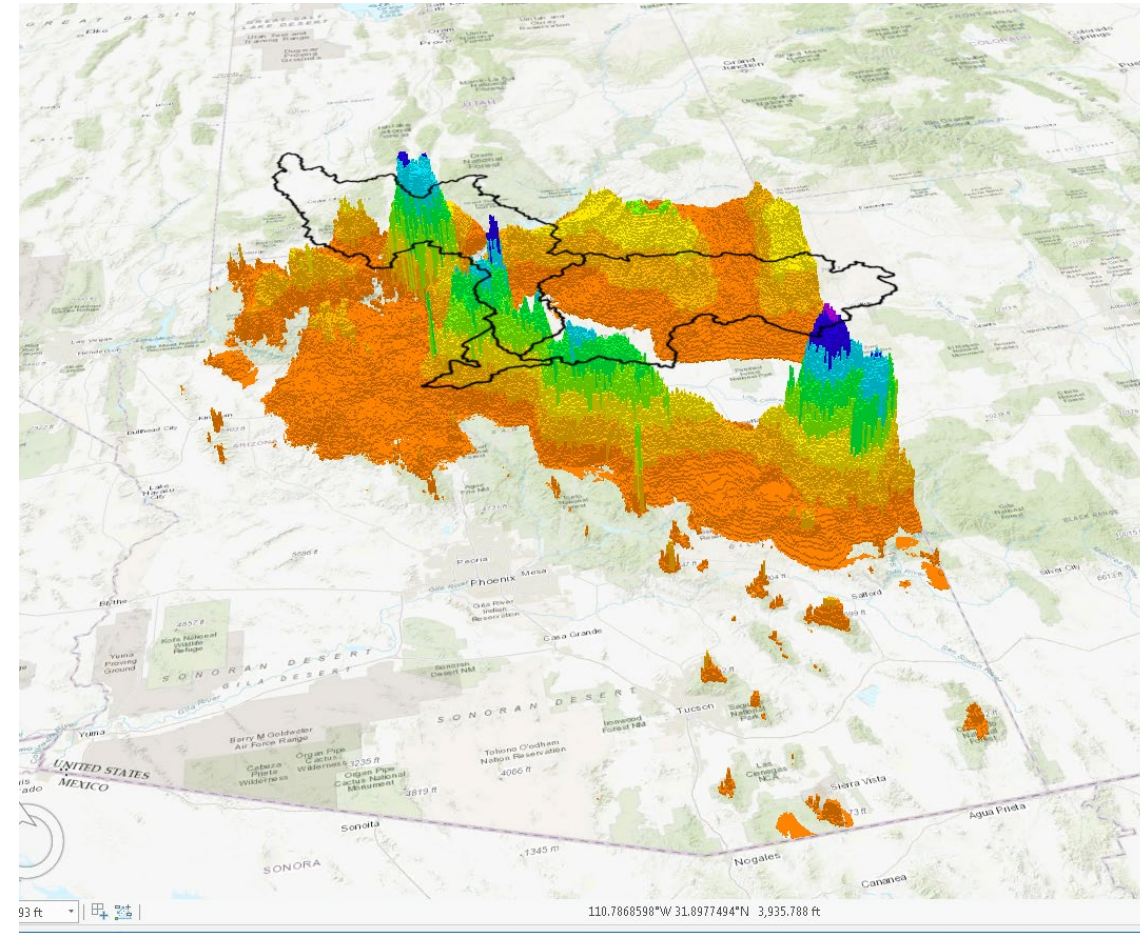
Project & file management



ArcGIS Pro Sub-Group Development Opportunities

ArcGIS Pro SDK

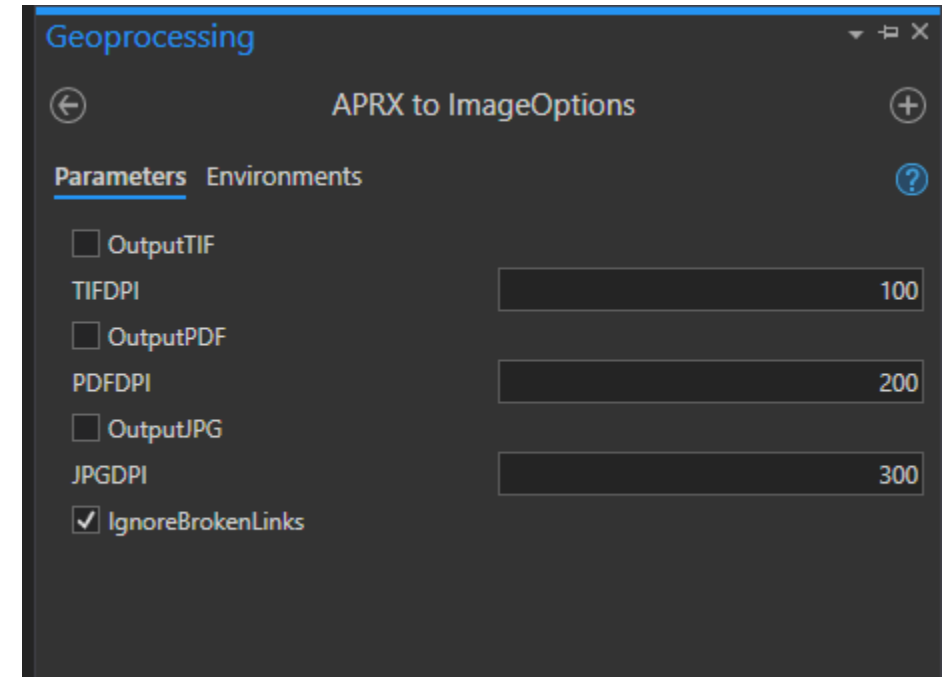
- Custom targeted applications for specific purposes
- Specific data management tools added to user interface



ArcGIS Pro Sub-Group Development Opportunities

Python 3.6

- Map export tools to .tif, .pdf, .jpg
- Map layers data management quality assurance process
- Dual Python environments



MyScript.bat

C:\Program Files\<Python Install location>.exe C:\Temp\MyScript.py

ArcGIS Pro Sub-Group Strategic Testing Results

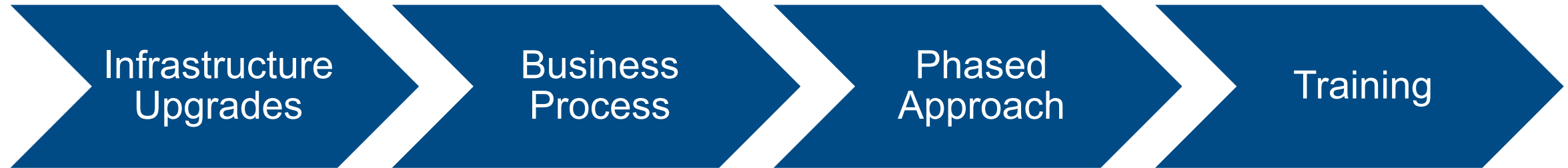
Matrix

Topic Area	Findings	Recommendations	Notes
Installation		Roll out timeframe?	NET Framework 6.1 or later
Mapping functional	Transparencies	me	
File & Project Management	vs ers		Use Favorites over Templates

ArcGIS Pro Sub-Group Progress Update: December 2017

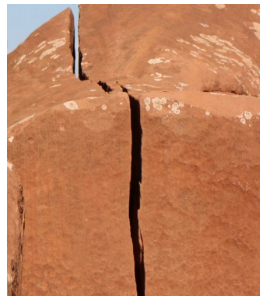


ArcGIS Pro Deployment Strategy: March 2018



- License manager configurations
- Enterprise geodatabases
- Operating system

- File & data management standards
- Python tools
- SDK implementation



- ArcGIS Desktop & ArcGIS Pro running simultaneously
- It's a dial, not a...



- Prior to deployment



ArcGIS Pro Training Strategy: August 2018 – October 2018

ESRI Training

- Resources via ESRI Academy

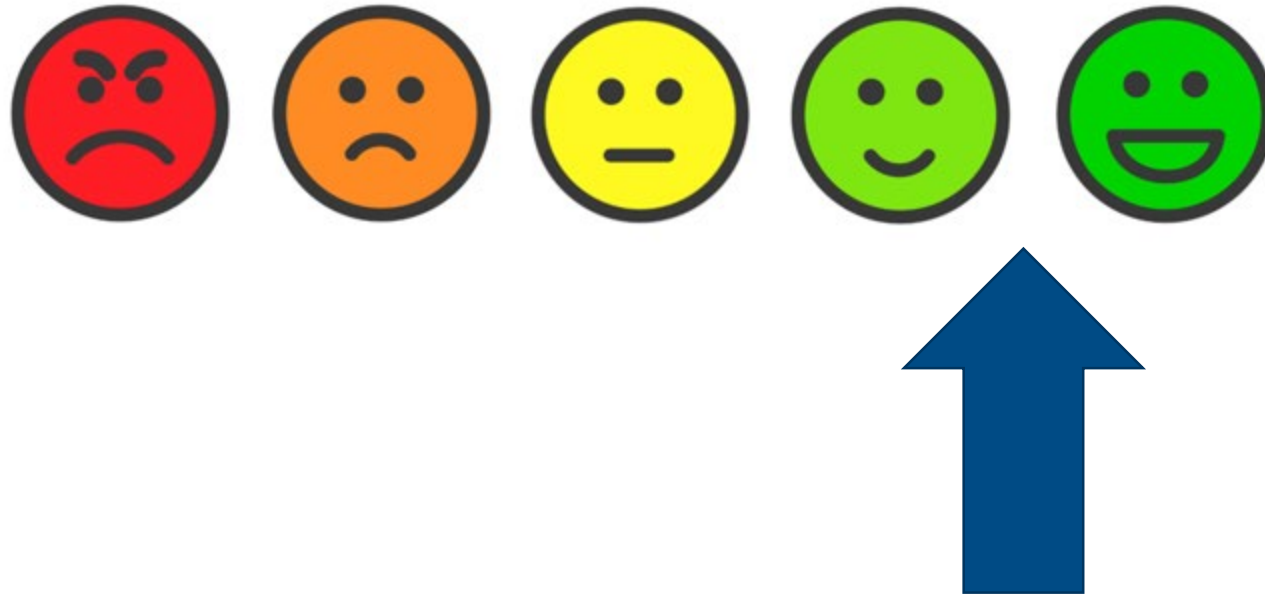
Web Courses

- Introductory six courses - *required*
- <https://bit.ly/2l1LBzh>

Instructor Led Training

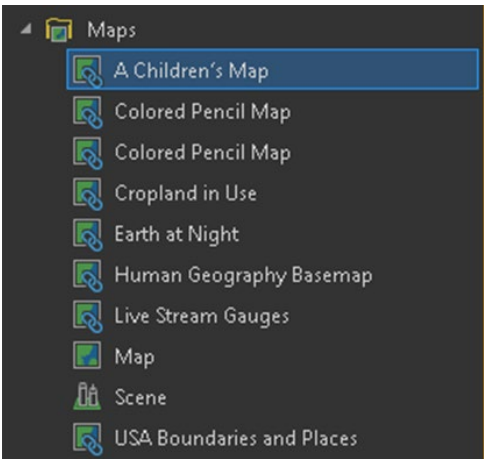
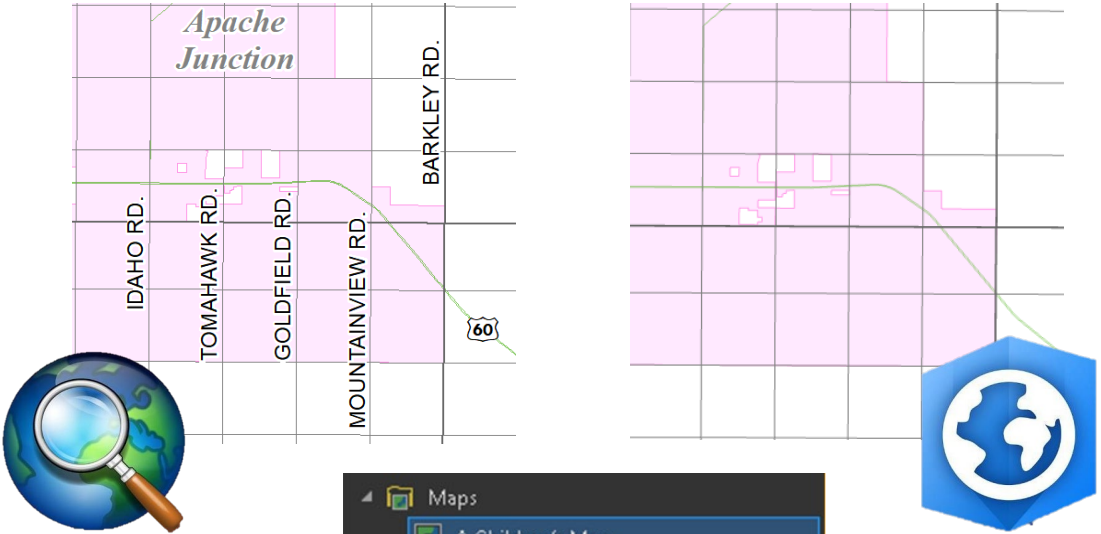
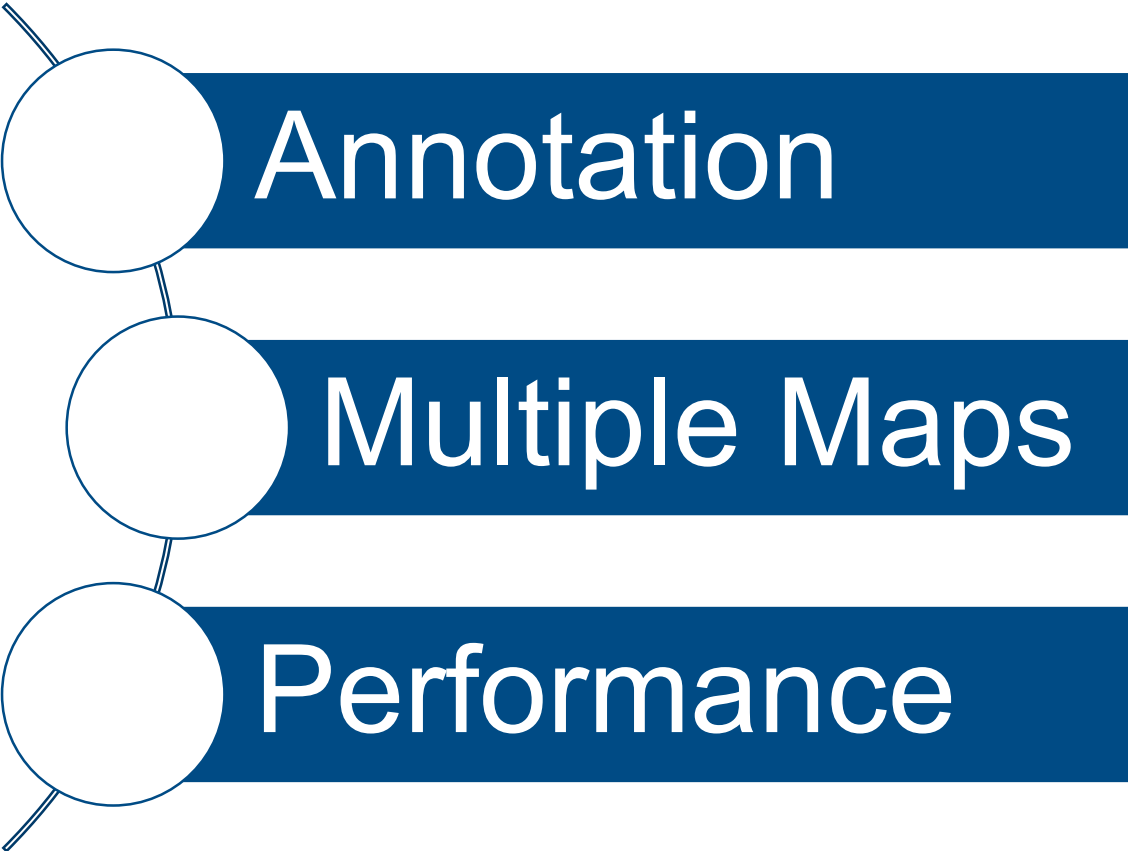
- *“Migrating from ArcMap to ArcGIS Pro”*



ArcGIS Pro Training Strategy Feedback



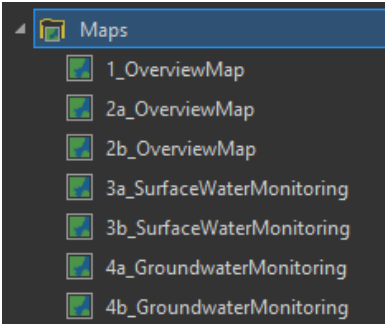
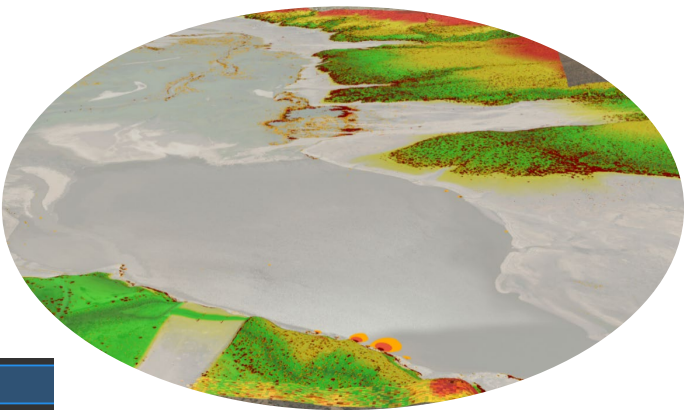
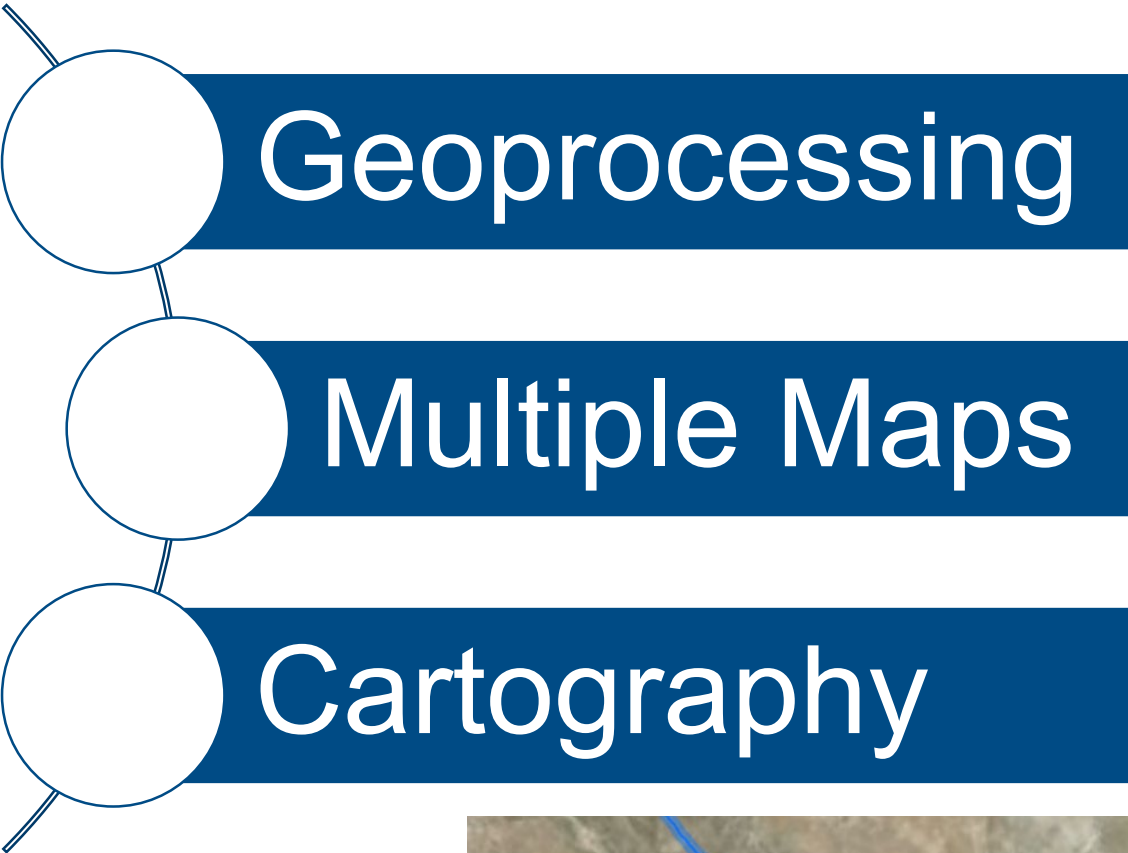
... we were deployed

Deployment Challenges – October 2018 - June 2019

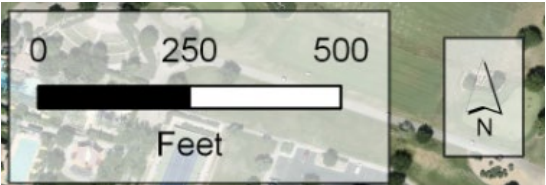


▼  ArcGIS Pro	16.8%	3,233.8 MB	0 MB/s	0 Mbps	18.2%	GPU 0 - 3D
 ArcGIS Pro						

Deployment Positives– October 2018 - June 2019



```
<dyn type="layout" property="name"/> from  
<dyn type="project" property="name"/>.aprx  
<dyn type="project" property="dateSaved" format="short"/>
```

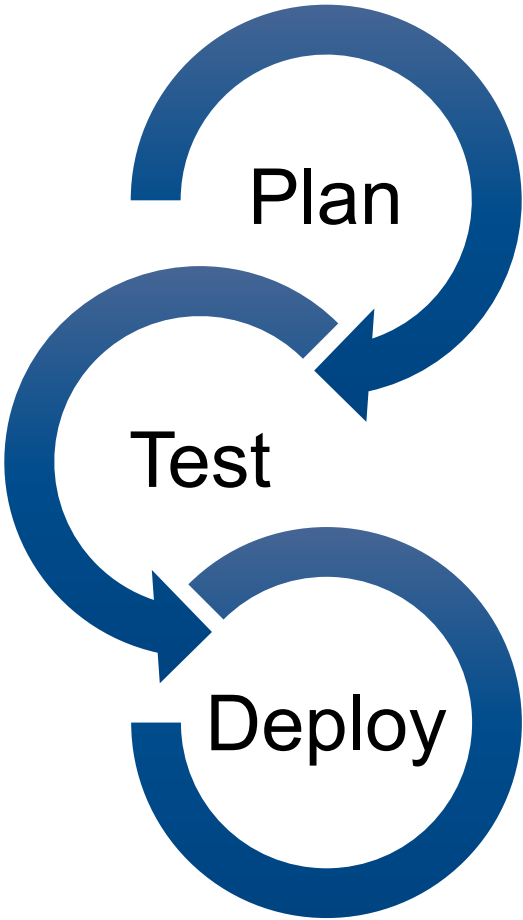


Overall Utilization & Conclusion

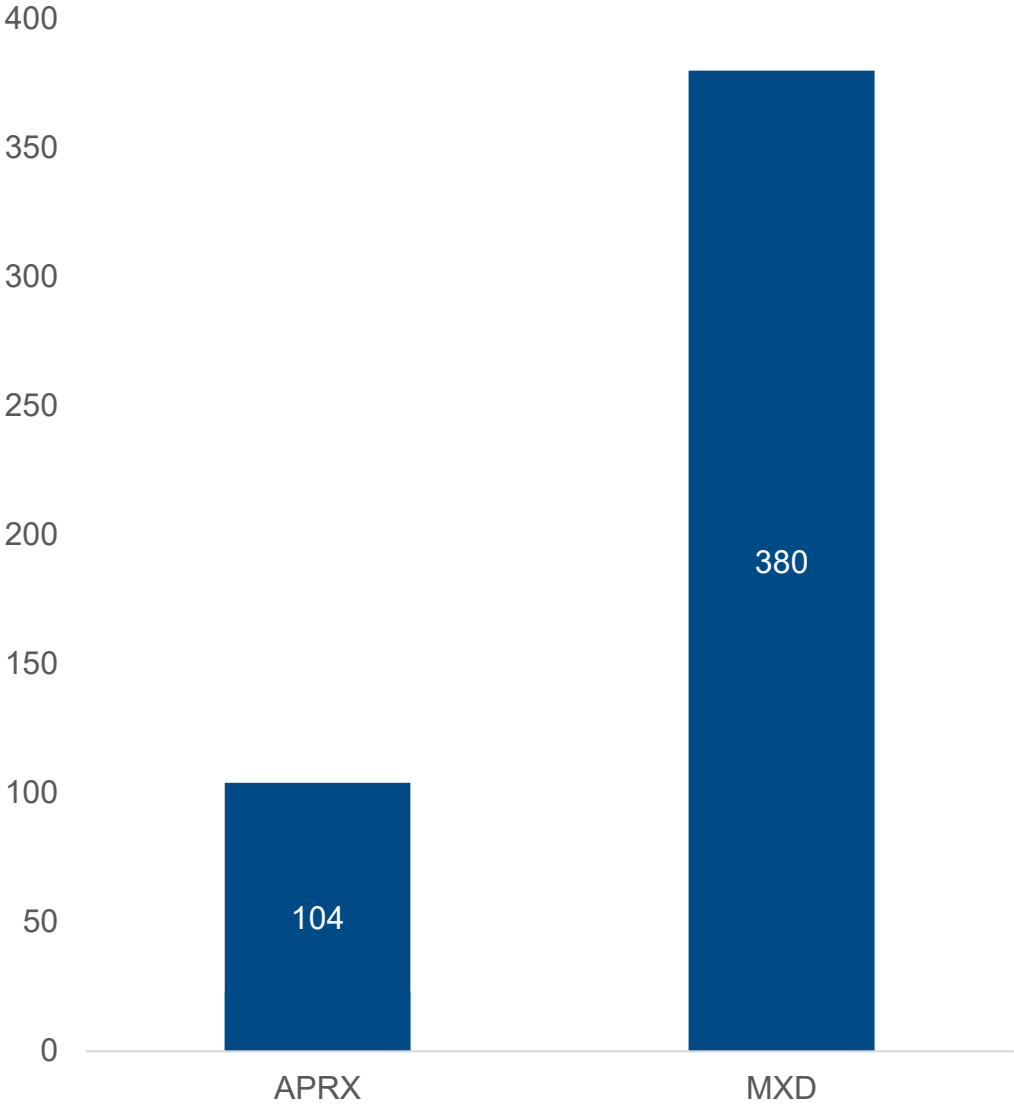
Utilization

Success Stories

Conclusion



Total Document Count



Questions?



Brian Colson, GISP
SRP Cartographic & GIS Services
Brian.Colson@srpnet.com