

Port of New Orleans: Exceeding the Needs of Tomorrow Through Enterprise GIS

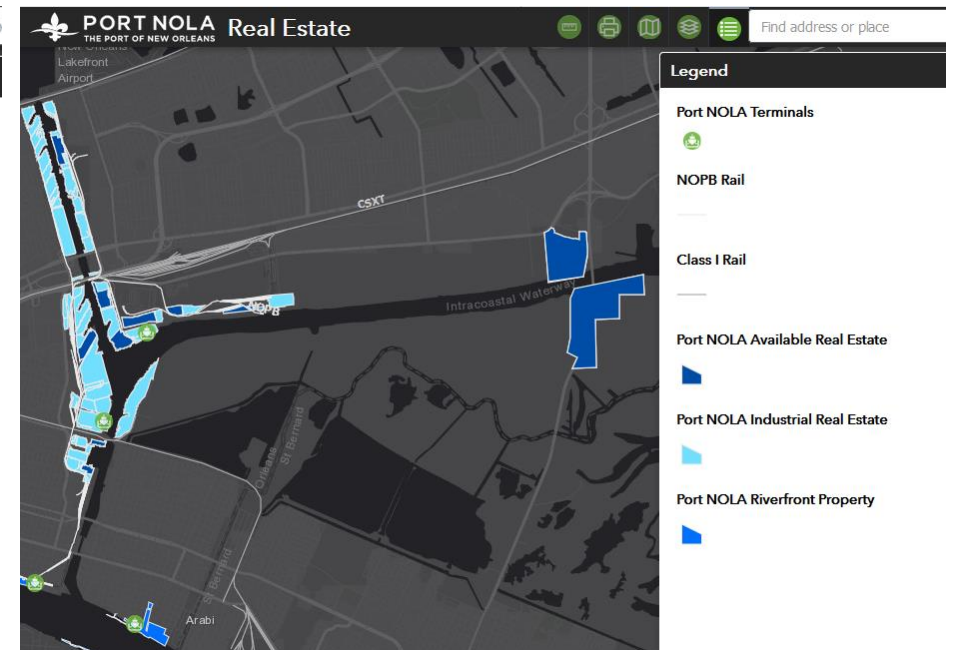
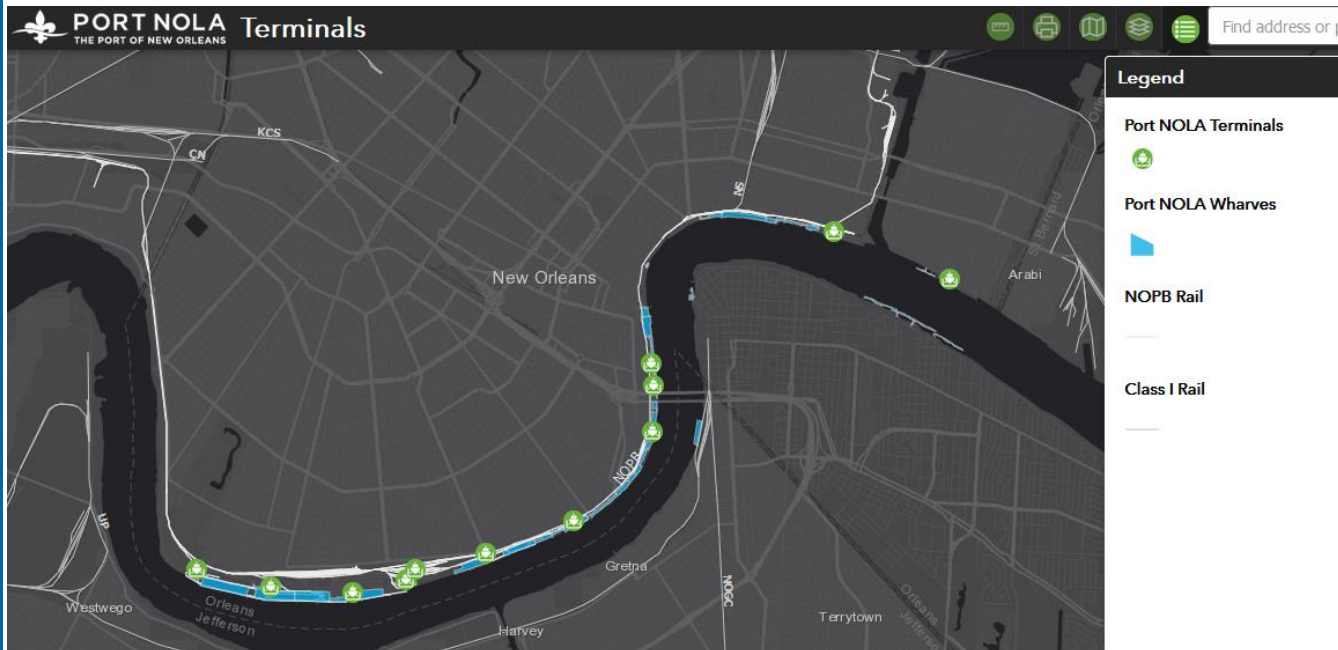
Maggie Cloos
GIS Manager, Port NOLA

Andrew Milanes, PE, GISP
Environmental Science Services, Inc.

July 2019

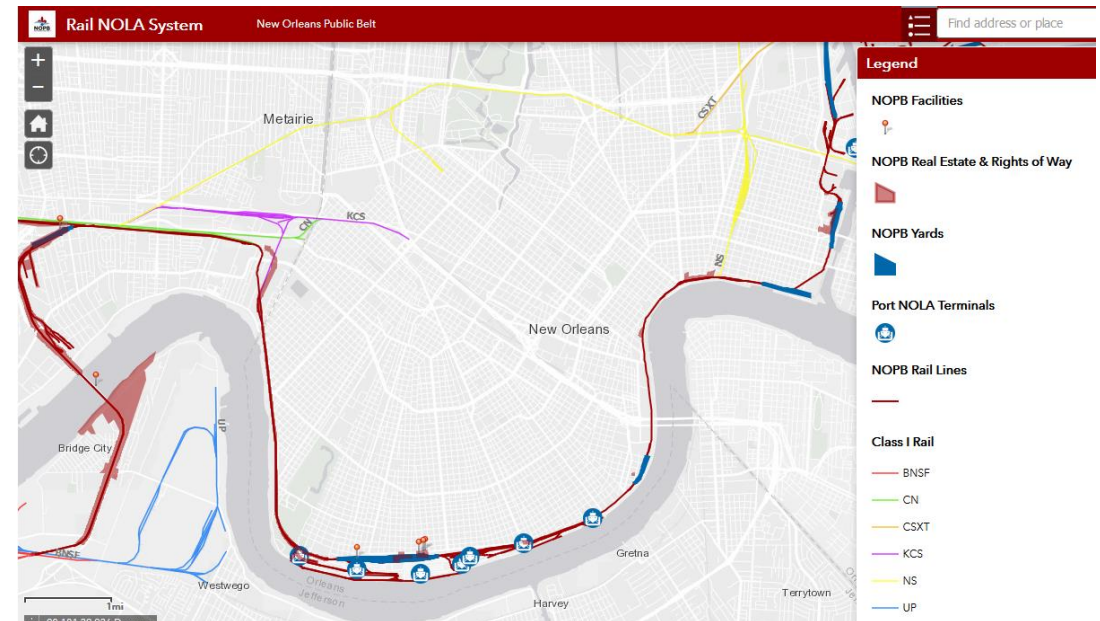
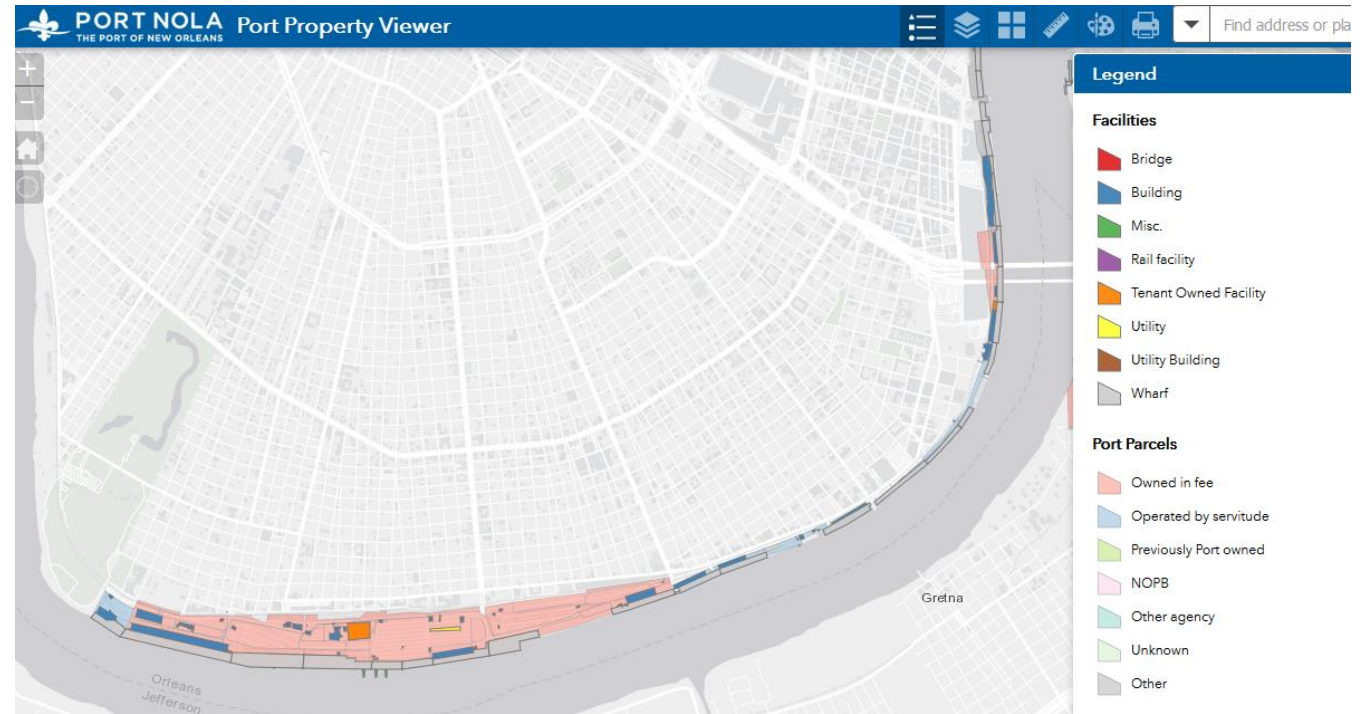
Port NOLA 101

- Our mission is to drive regional economic prosperity by maximizing the flow of international trade and commerce as a modern Gateway
- We have 4 integrated lines of business: cargo, rail, industrial real estate & cruise
- Port activity in our three-parish jurisdiction generates a total of 19,050 jobs and \$3.9 billion of output



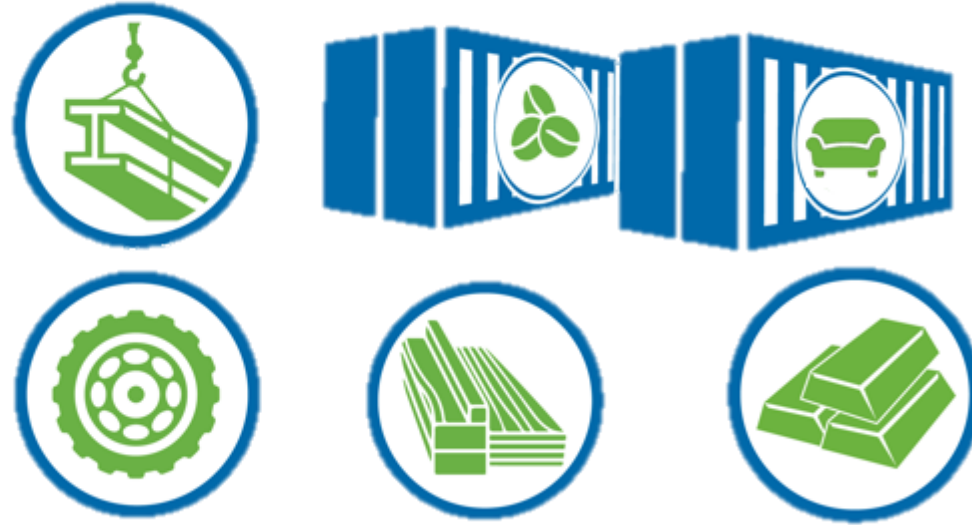
Our Footprint

- Our jurisdiction encompasses 34 miles and three parishes
- We are the only deepwater port with six Class-I railroads
- Access to the Class I's via the New Orleans Public Belt Railroad- acquired in 2018
- The Mississippi River System connects us to the nation's heartland via 14,500 miles of inland waterway



Cargo Spotlight

IMPORT



steel, coffee, furniture, natural rubber, forest products and non-ferrous metals

EXPORT



plastics/resins, frozen poultry, paper and pulp

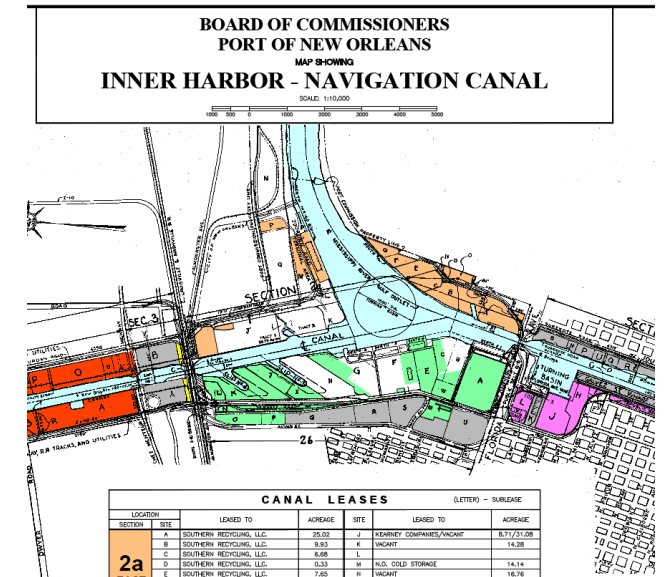
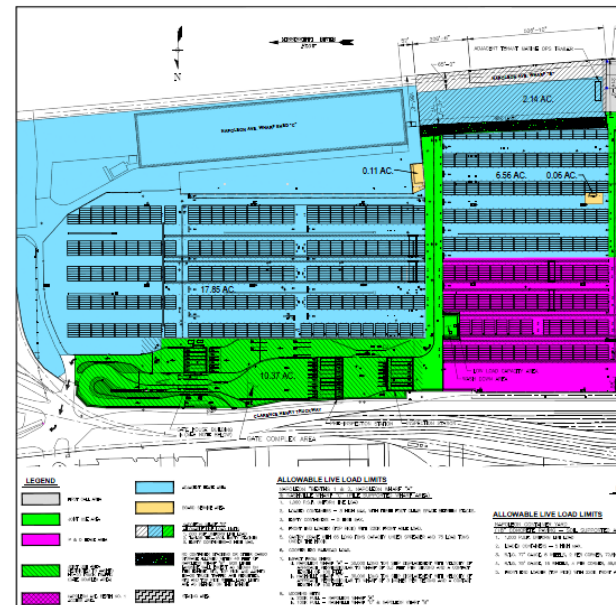
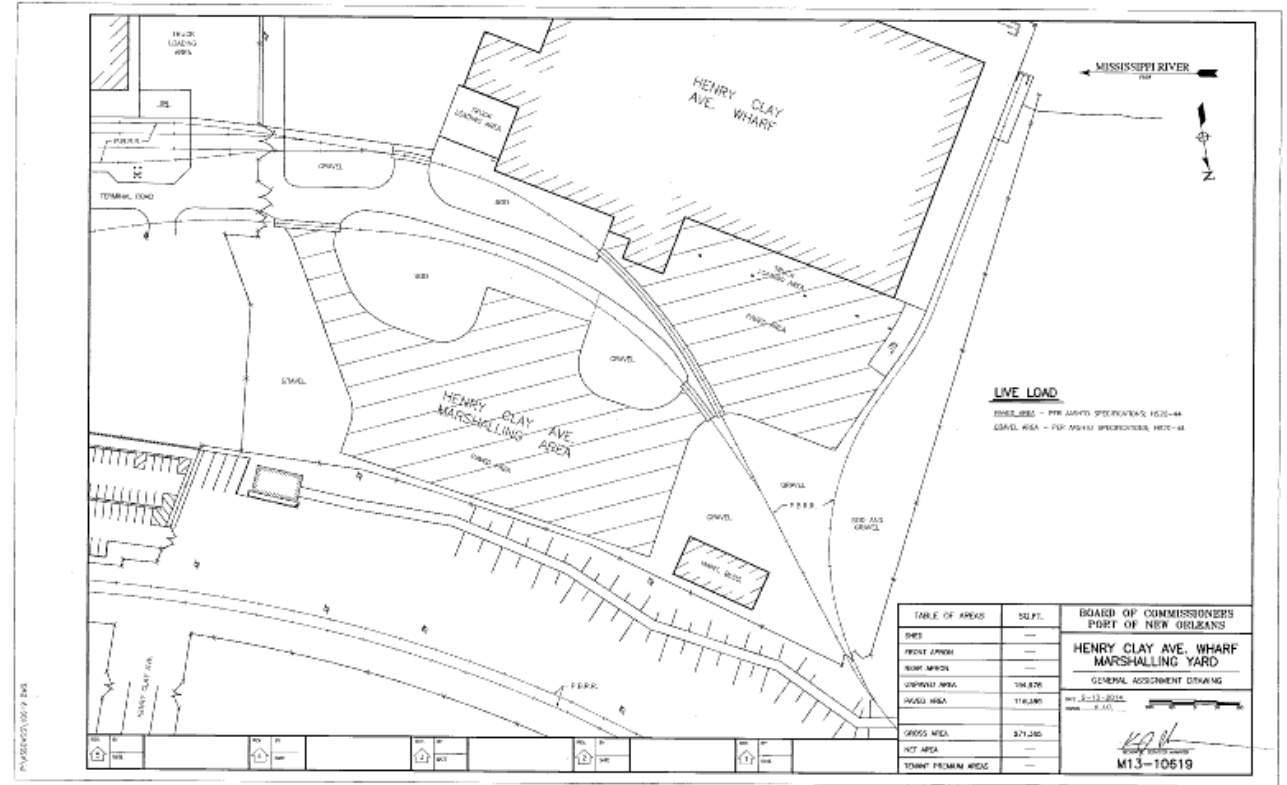
Project Overview

- ArcGIS Enterprise organization with 90 members
- 6 Port departments & 4 NOPB departments contributed to the project
- 7 Web AppBuilder applications for Port-wide use
- 3 departments currently using field applications
- ArcGIS Online also in use for public-facing content



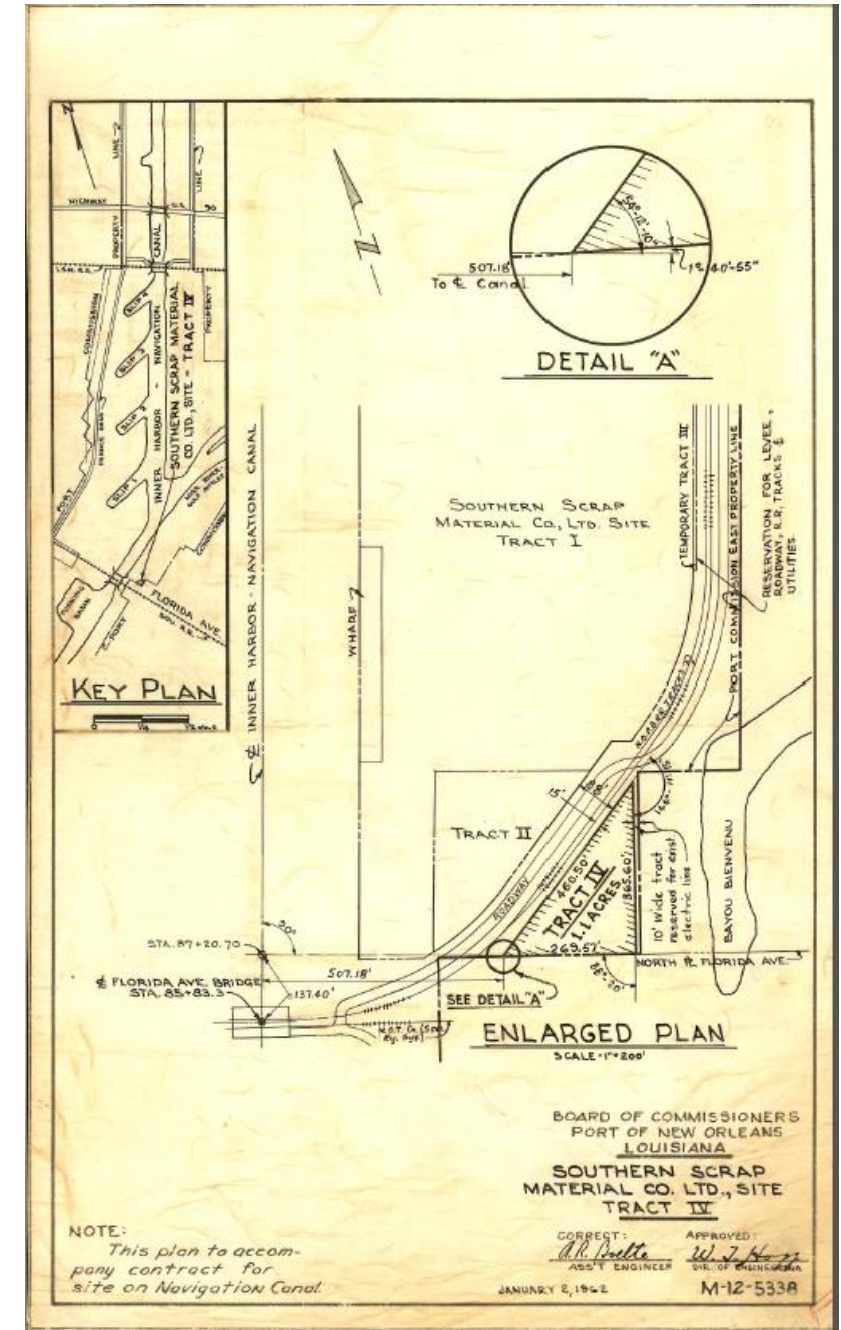
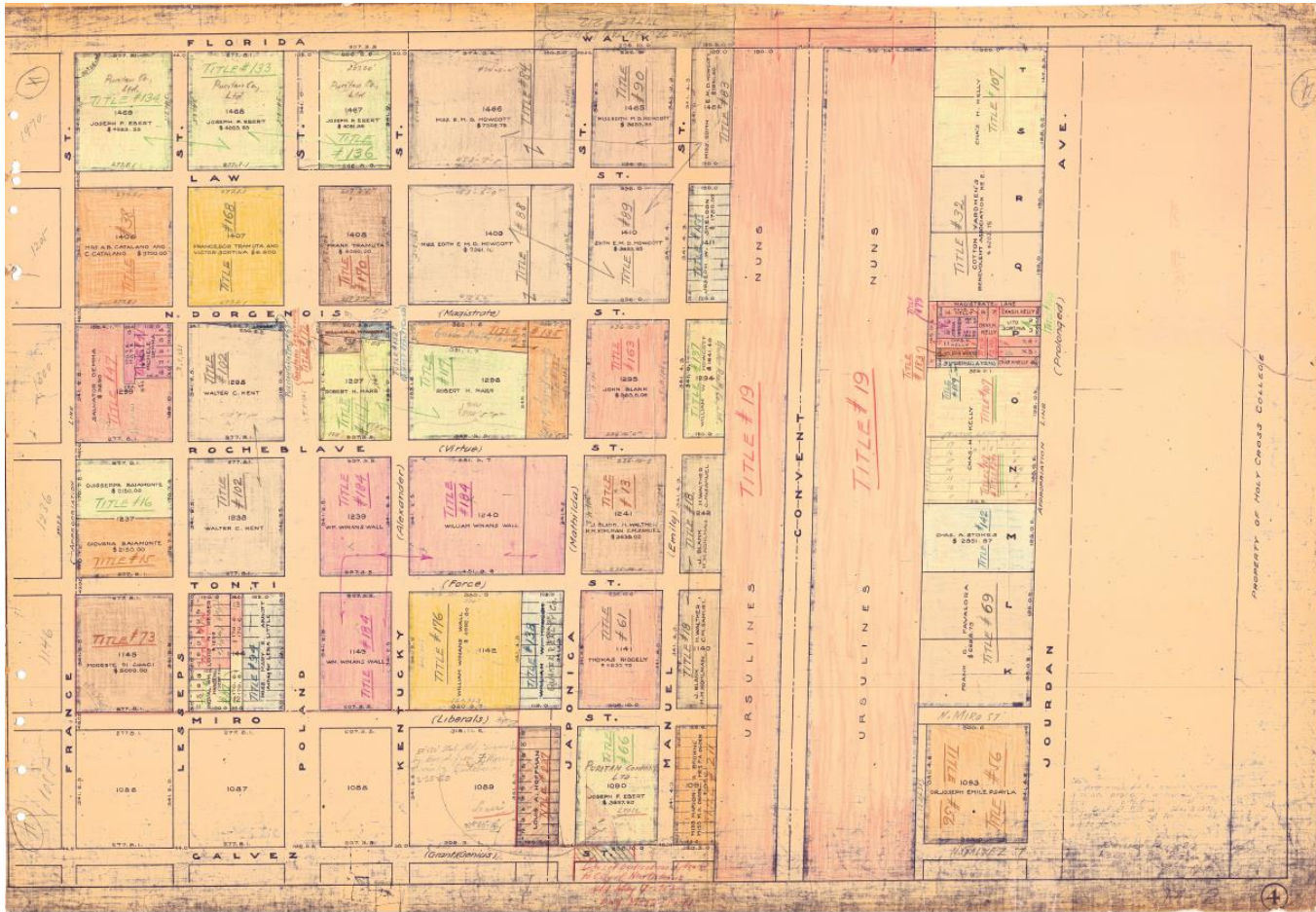
Project Overview

- Technical Services department has been responsible for maps & technical drawings to date
- In-house drawings generated in AutoCAD, not georeferenced
- Occasional surveys & plan sets are submitted by outside consultants- collaborated with Engineering dept. to develop new standards



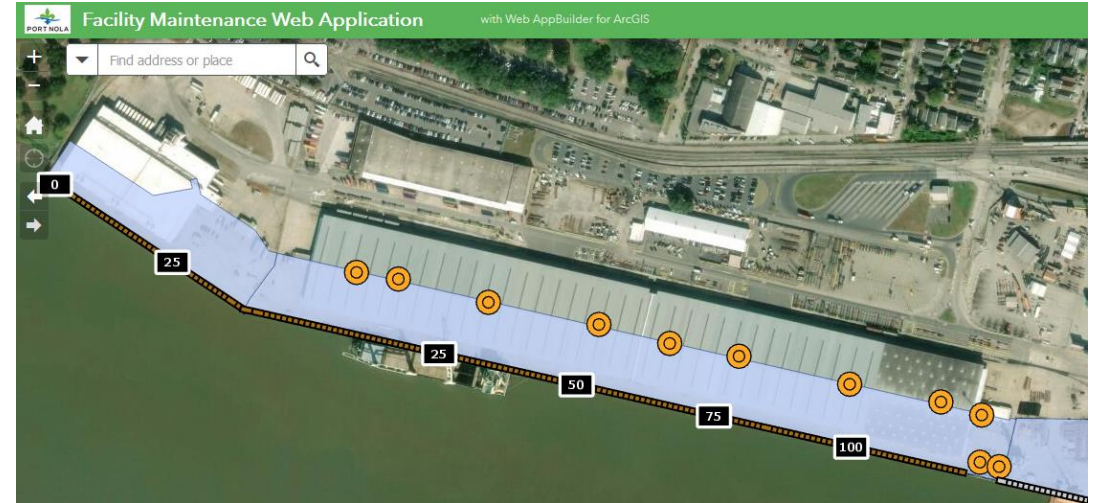
Project Overview

- Source data has varied broadly in age and accuracy



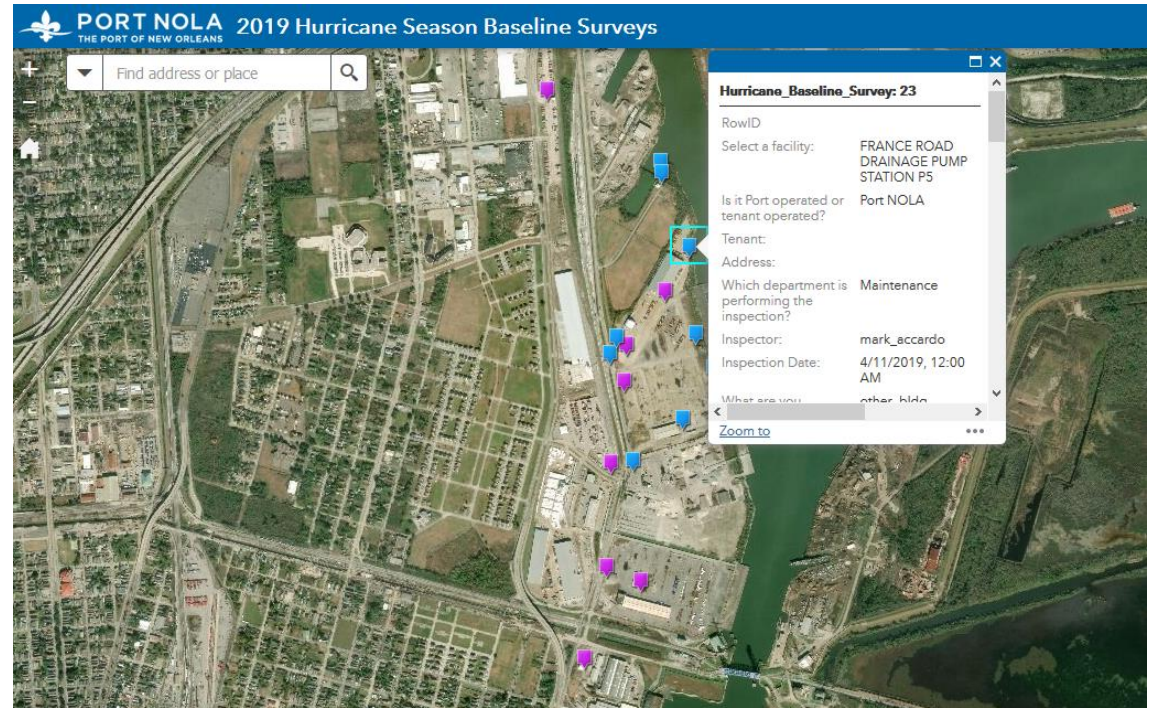
Supporting our Operations with GIS


- We have mapped some of our smallest units of infrastructure & are using that data to replace manual inspection workflows in multiple departments



Supporting our Operations with GIS

- Survey123 replaced a paper & Excel-based process for hurricane season preparedness in 2019
- GIS workflow reduced man hours from weeks to days & dramatically improved record keeping



4000 FRANCE ROAD PARKWAY - OFFICE											
EXTERIOR											
Section No.	Division	Metal Wall Panels	Translucent Wall Panels	Overhead Rollup Doors	Light Fixture	Signage	Metal Roof Panels	Ridge Vent	Gutters	Guard Post	Comments
											
15	A	Eastern side of building									

[Form Preview](#)
[Schema Preview](#)
[Settings](#)

Port Facilities Baseline Survey

Select a facility: *

Begin typing the name or address to narrow the results in the dropdown menu. If you are inspecting multiple facilities (wharf, shed, yard, etc.), select that wharf as the facility. If you are inspecting a single building or asset, choose that asset. If the facility does not have a Damage Assessment Plan number (e.g. EBR 106), please select other.

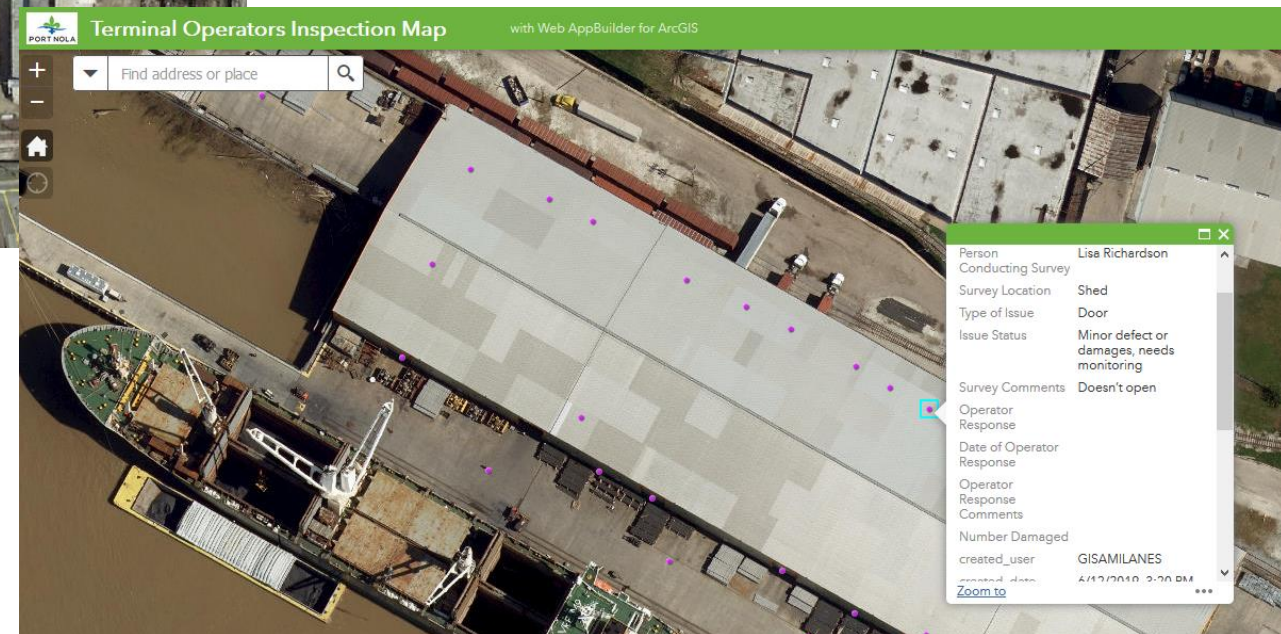
Is it Port operated or tenant operated? *

☐ Port NOLA
☐ Tenant

Address:

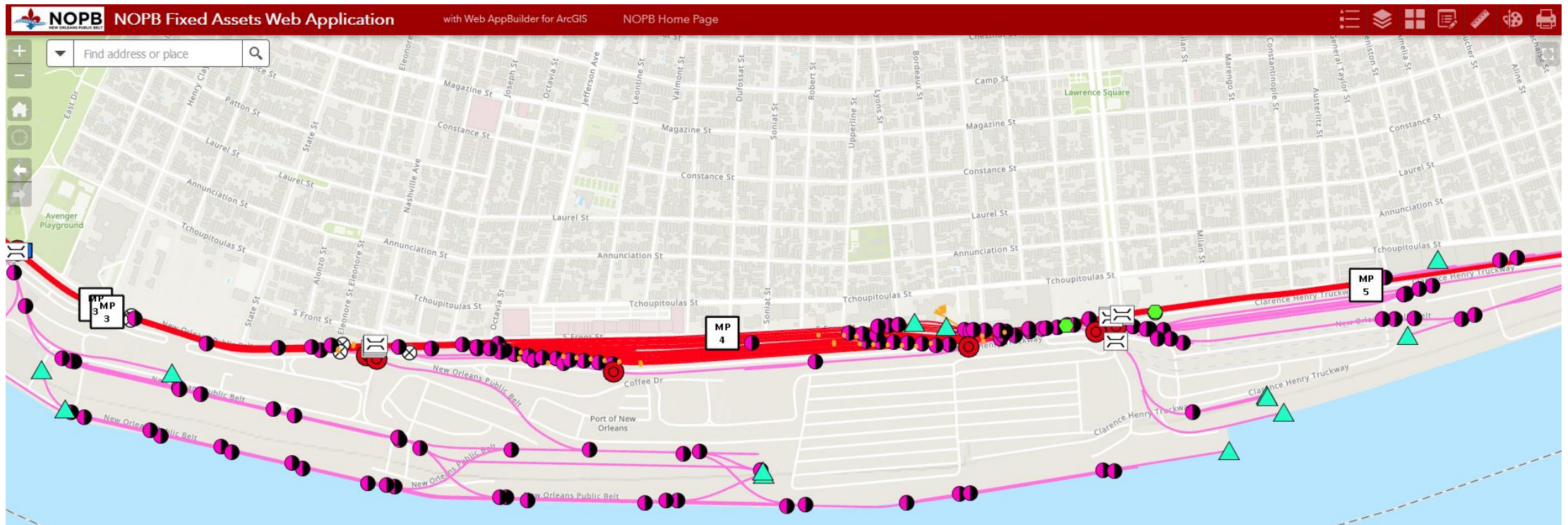
Supporting our Operations with GIS

- Apps like Survey123 and Collector are transforming the way we inspect facilities



Looking Ahead

- Departments continue to make requests for new maps & field apps on a regular basis- ex. trench drain inspections, overloading
- Goal of capturing asset condition & maintenance activities in dashboards for all levels of decision makers
- Collaboration with NOPB on GIS apps for infrastructure maintenance



Looking Ahead

- We received additional PSGP funding in Sept. 2018 & are hoping to launch pilot projects for new capabilities in the next 2 years
- Interest in real time data for:
 - Cruise terminal passenger activity
 - Congestion & activity in our truckway
 - In-house vessel tracking capability
- Upcoming needs assessment for GIS-based asset management
- Possible integrations with document management & financial systems
- Also hoping to expand public-facing GIS content:
 - Story maps of Port development with archival photos, marketing property for film shoots
 - Community engagement apps for planning projects
 - Collaboration between Enterprise/AGOL to share content with Port Partners

Thank you!

Connect with us...



Facebook
[/NewOrleansPort](#)



LinkedIn
[@PortNola](#)



YouTube
[PortofNola](#)



Twitter
[@PortNola](#)



Instagram
[portnola](#)



[portnola.com](#)