

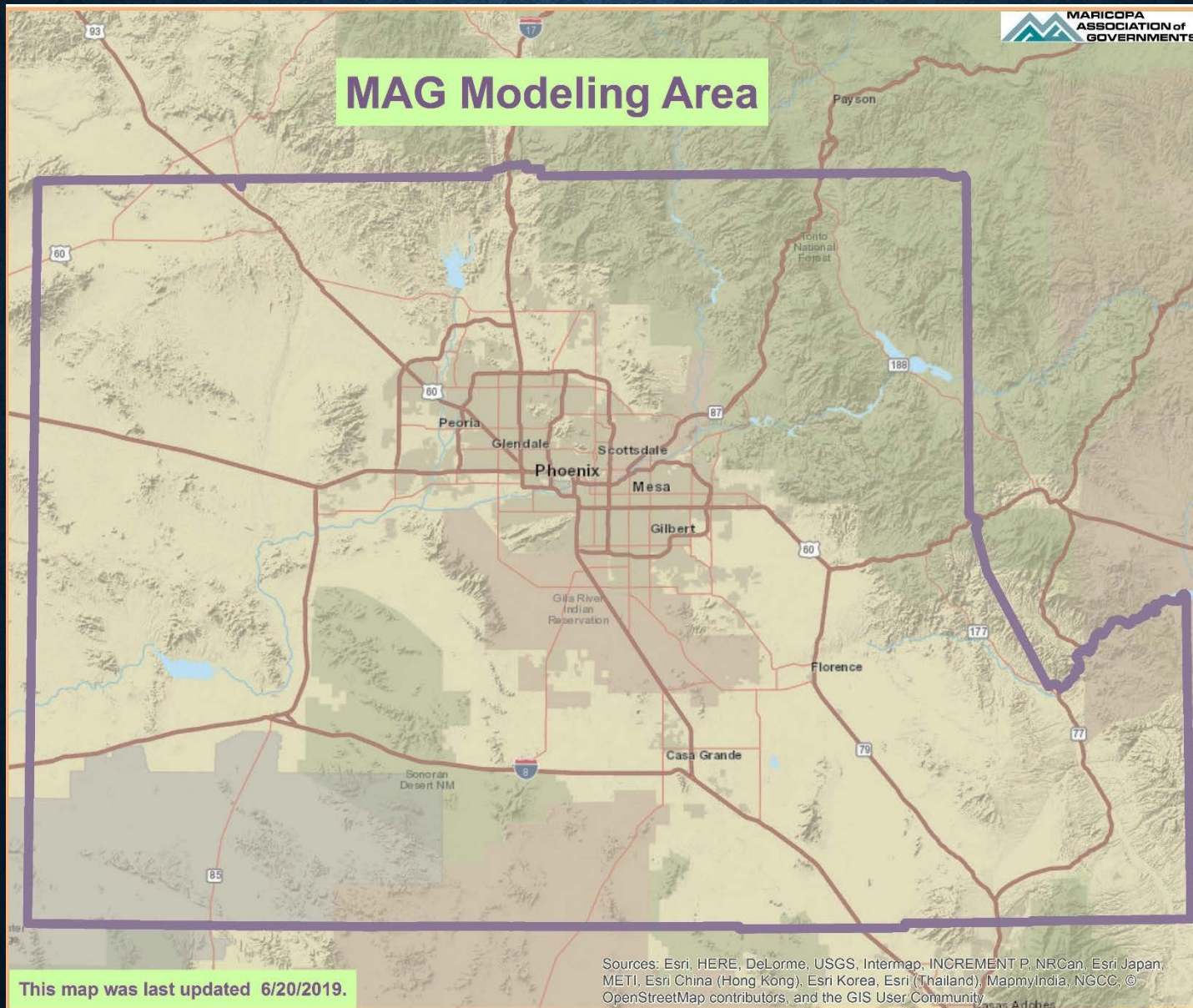
DELINEATION OF TRAFFIC ANALYSIS ZONES-

GIS HELPS REGIONAL TRANSPORTATION PLANNING

Petya Maneva

Maricopa Association of Governments

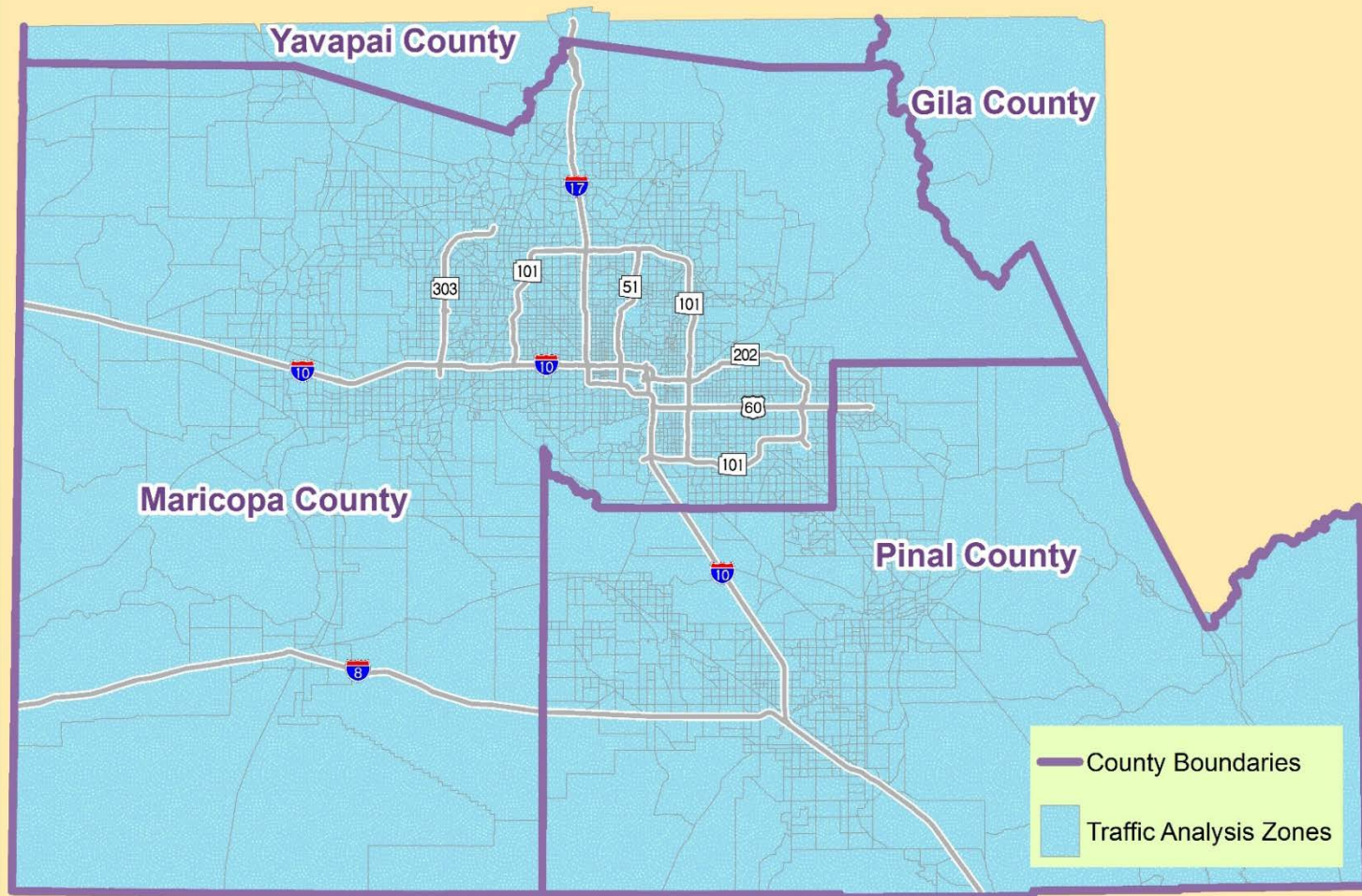
MAG Modeling Area



WHAT ARE TRAFFIC ANALYSIS ZONES (TAZ) AND WHY DO WE NEED THEM

- The planning region is divided into geographic areas – TAZs.
- TAZ polygons contain employment, population, school enrollment and other data.
- The origins and destinations of trips are mapped to TAZs.
- Travel forecasting models trips between each pair of zones by purpose, mode and time of day.

MAG Traffic Analysis Zones 2019




This map was last updated 6/20/2019.

MICROANALYSIS ZONES ADD HIGHER SPATIAL RESOLUTION TO TRAVEL DEMAND MODELING

- Advances in technology allow higher level of spatial resolution in modeling.
- Socioeconomic data is collected and projected at neighborhood level.
- MAZs leverage block level census data – the smallest level of spatial aggregation.

Micro Analysis Zones Nest in Traffic Analysis Zones

-  Traffic Analysis Zones
-  Micro Analysis Zones

This map was last updated 6/20/2019.

QUICK 2018 STATISTICS FOR MAG REGION

Traffic Analysis Zones - TAZs

- Total Number: 3,348
- Average Population: 1,534
- Average Employment: 654

Micro Analysis Zones - MAZs

- Total Number: 26,266
- Average Population: 195
- Average Employment: 83

Note: The data is in currently being reviewed and the final calculations might be different.

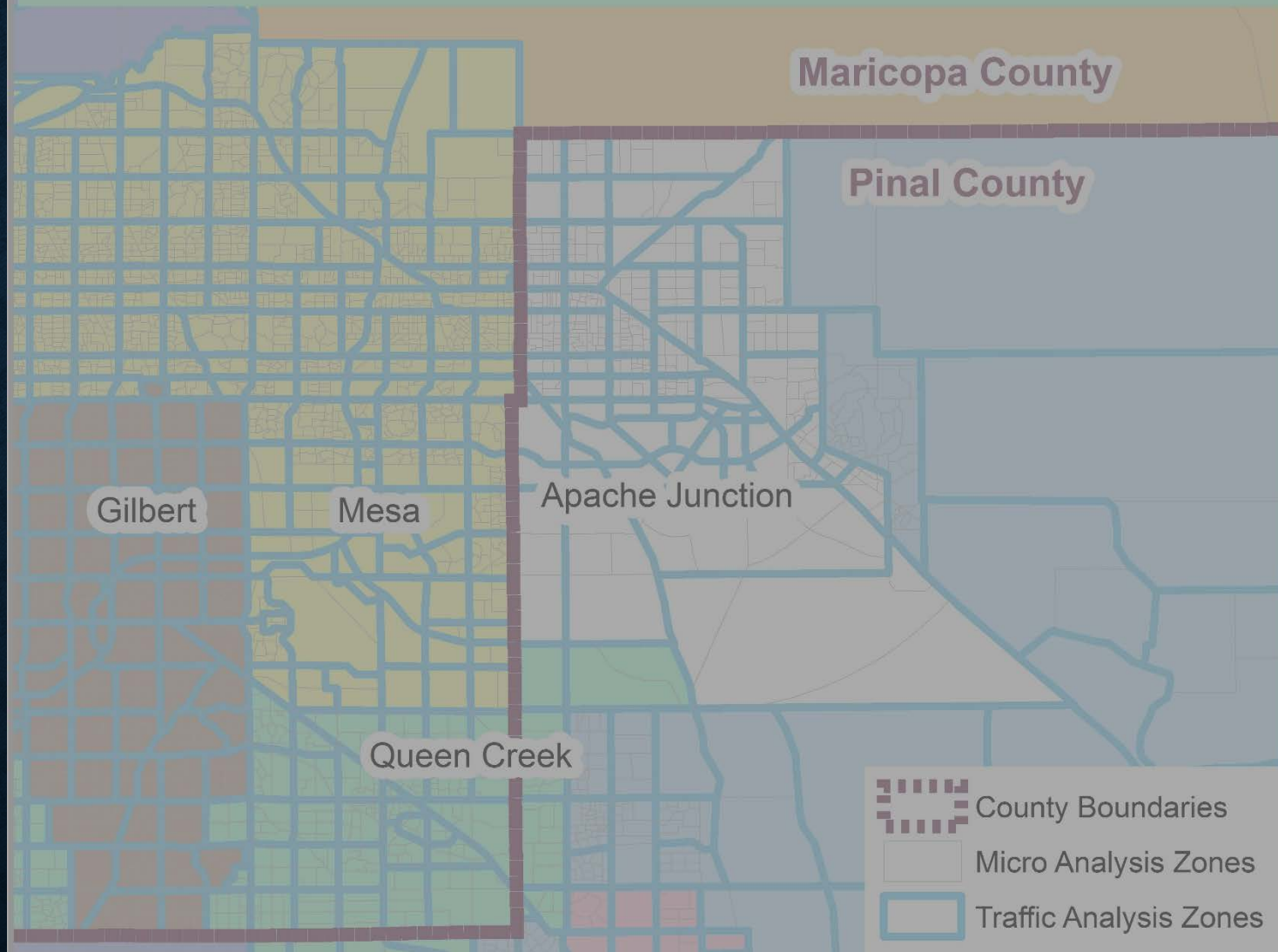
WHAT TO CONSIDER WHEN DRAWING BOUNDARIES

- Jurisdiction boundaries
- Transportation network, transit network
- Topographic features
- Census geographies
- Population density
- Employment density

WHAT TO CONSIDER WHEN DRAWING BOUNDARIES – PART II

- Land use
- Major airports
- University campuses
- Special event venues
- Clusters of truck stops

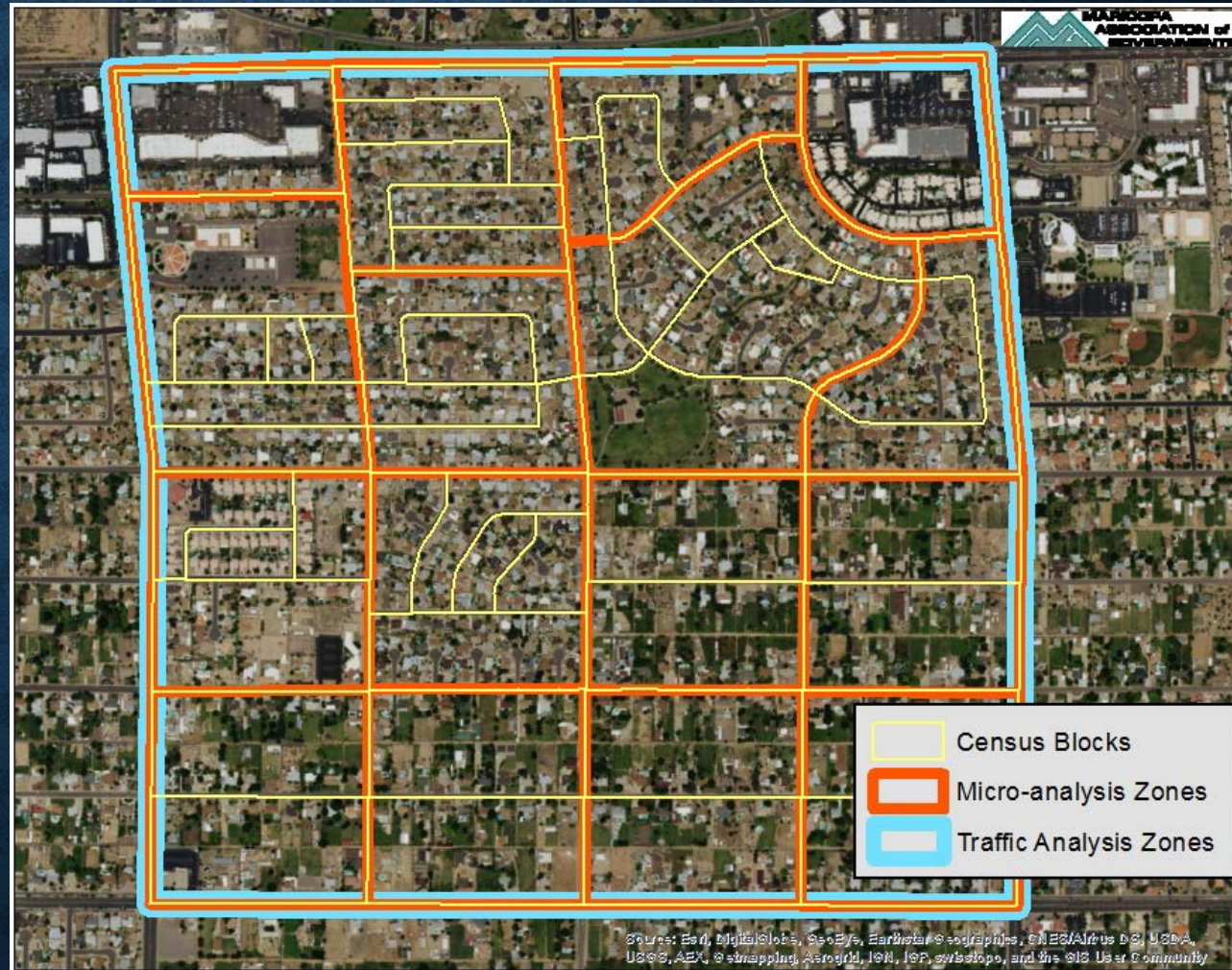
MAZs and TAZs Nest in Jurisdiction Boundaries



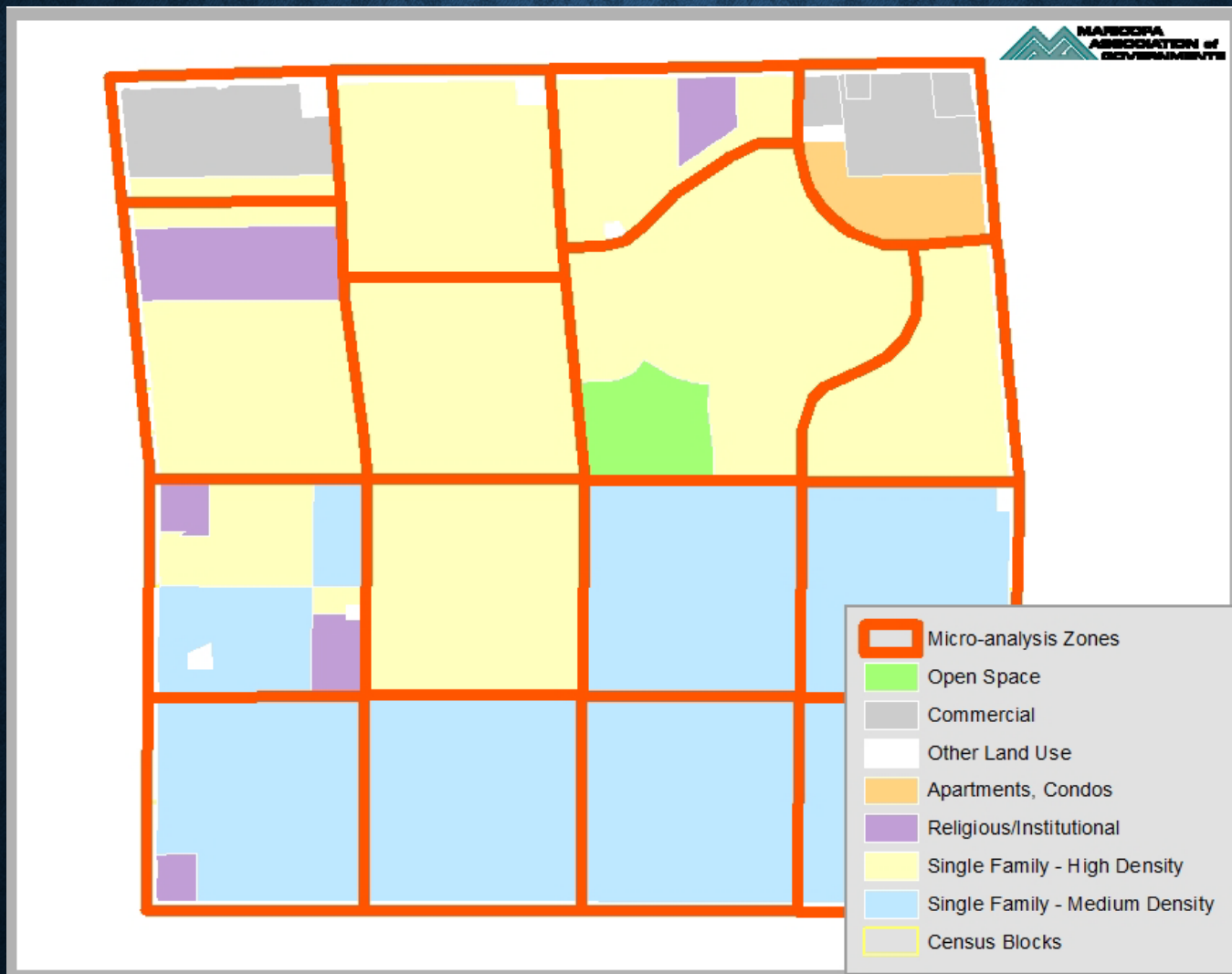
CENSUS BLOCKS – THE BUILDING BLOCKS FOR MAZS

Census Blocks Are
Grouped in MAZs Based
on their Population.

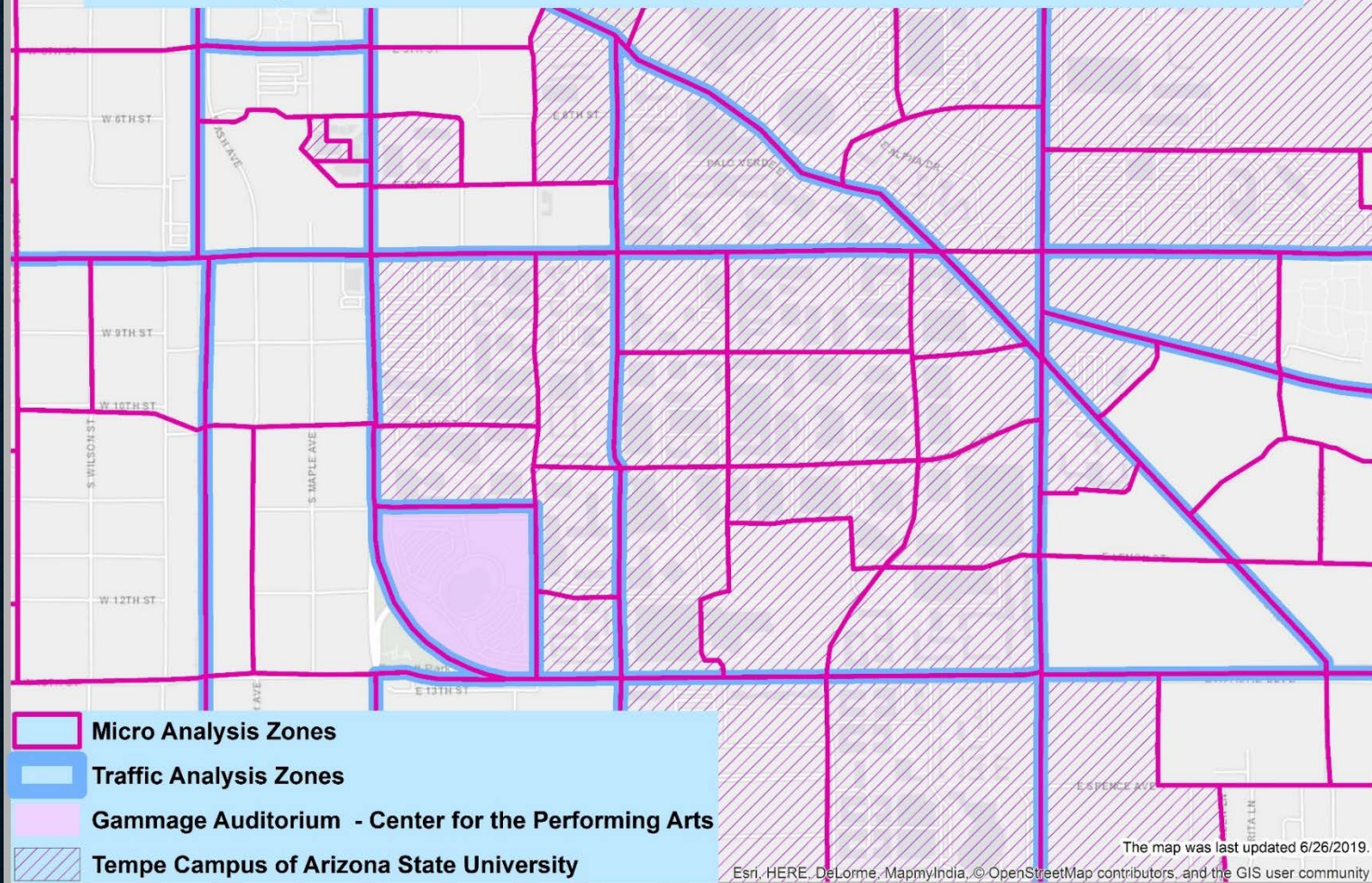
Aerial Photography and
Online Mapping
Services Inform
Boundary Delineations.



LAND USE – AN IMPORTANT FACTOR FOR MAZ BOUNDARIES



MAZ Boundaries Are Adjusted to the Layout of University Campuses Special Event Venues Represent Their Own Zones



The Tools We Use

- Topology rules
- Buffering
- Summary statistics
- Joins and “join fields”
- Split polygons by the shape of overlapping features
- Spatial overlays
- Aggregation, dissolution

How We Share Data

- Map Packages
- ArcGIS Online

ADDITIONAL GIS FUNCTIONALITY WE NEED

- A WISH LIST

- Split polygons by line features in another dataset
- “Elastic polygons” – polygons sharing boundaries, no need to cleanup gaps and overlaps
- Faster performance, storing intermediate results in RAM

QUESTIONS

Contact Information:

Petya Maneva : pmaneva@azmag.gov

Arup Dutta: adutta@azmag.gov