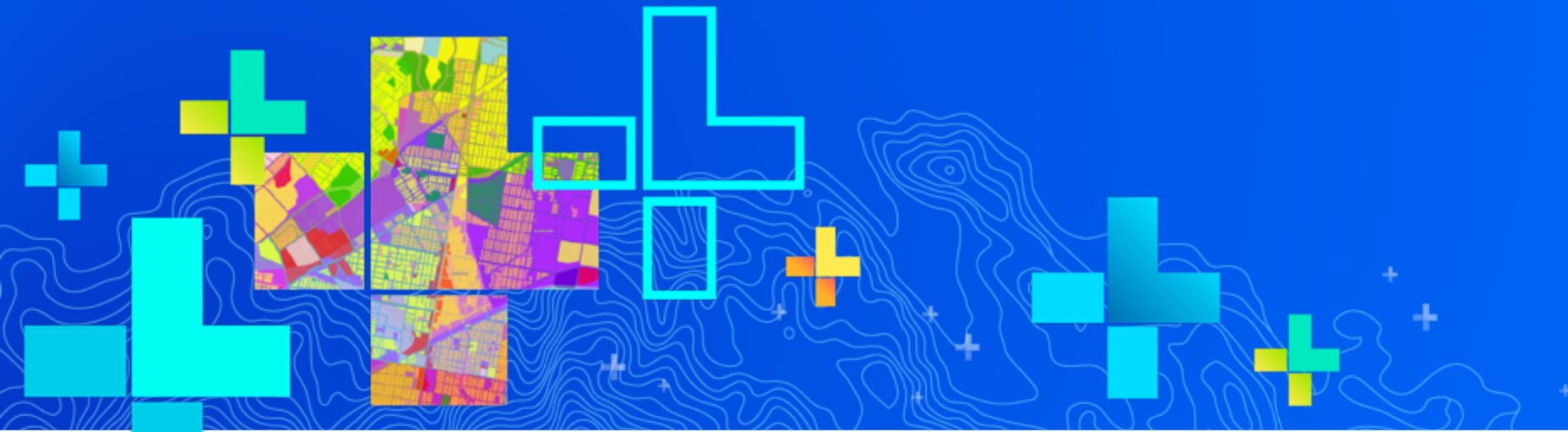


Using GIS to Respond to the Homeless Crisis:

Mapping the Intersection of Hunger and Student Homelessness Across America

Rachel Barth, Senior Policy Analyst

Mukta Ramola, GIS Analyst



A photograph of a classroom scene. A male teacher with a beard, wearing a light blue shirt and tan pants, is sitting on the floor on the right side of the frame, facing a group of children. The children, of various ethnicities, are sitting on the floor and looking up at the teacher with interest. Some have their hands raised. The background shows a typical classroom with a bulletin board, a calendar, and educational posters.

ICPH: Bringing Family Homelessness into Focus

- The Institute for Children, Poverty, and Homelessness (ICPH) is a New York City-based policy research organization focused on family homelessness in New York City and throughout the United States
- All materials we produce are available for free at www.ICPHusa.org

Reports

ICPH researches the causes of family homelessness, the demographics of this growing population, the conditions that make it difficult for homeless families to become self-sufficient, and the programs that are most effective in helping them transition out of poverty. ICPH works with programs and partners across the U.S. to conduct and disseminate this research in order to improve services and influence public policy.



Community

September 11, 2018

One-Third of Georgia's Homeless Students Live in Rural Areas



Education

September 6, 2018

Learning English While Homeless: Fast Fluency Drives Academic Success—Part Two



Education

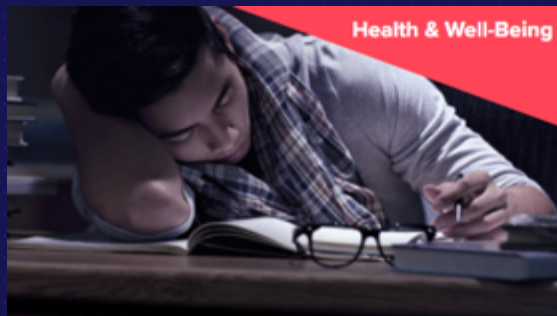
August 22, 2018

On The Map: The Atlas of Student Homelessness in New York City 2018—Section 1



Interactive Data

ICPH produces interactive tools and data for users to further explore the effects of homelessness on children and their families. These tools allow people from different fields to tailor and engage with ICPH data in a way that is meaningful to them and the unique needs of their organization.



Health & Well-Being

May 10, 2018

**The Health and Well-Being of
Homeless High School Students**



Education

April 11, 2018

Suspension Hubs Interactive Map



Education

April 10, 2018

The United States of Homelessness



Student Homelessness:

How is it defined?

Lacking a fixed, regular, and adequate nighttime residence

- Emergency or transitional sheltered
- Doubled up due to economic hardship
- Hotel or motel
- Unsheltered

**Often “hidden” because they are more likely to live doubled up;
harder to account for and provide them with services**

Accessing Data on Homelessness

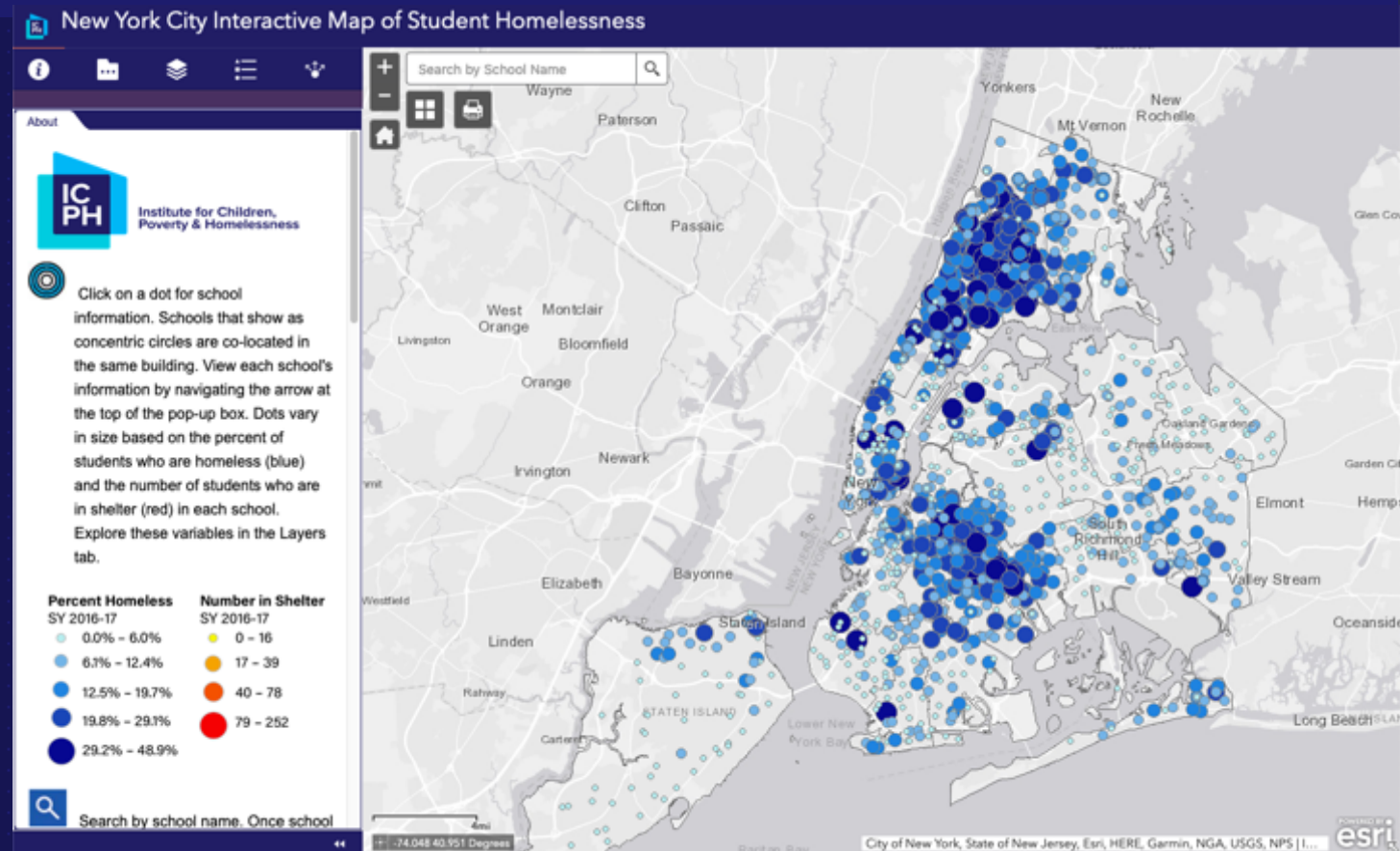
- Combination of publicly-available data and FOIL requests and data sharing agreements
- One of the biggest challenges is privacy—accessing and displaying data
- Collaborative effort between policy team and GIS team to clean and prepare data for mapping

NYC Interactive Map of Student Homelessness

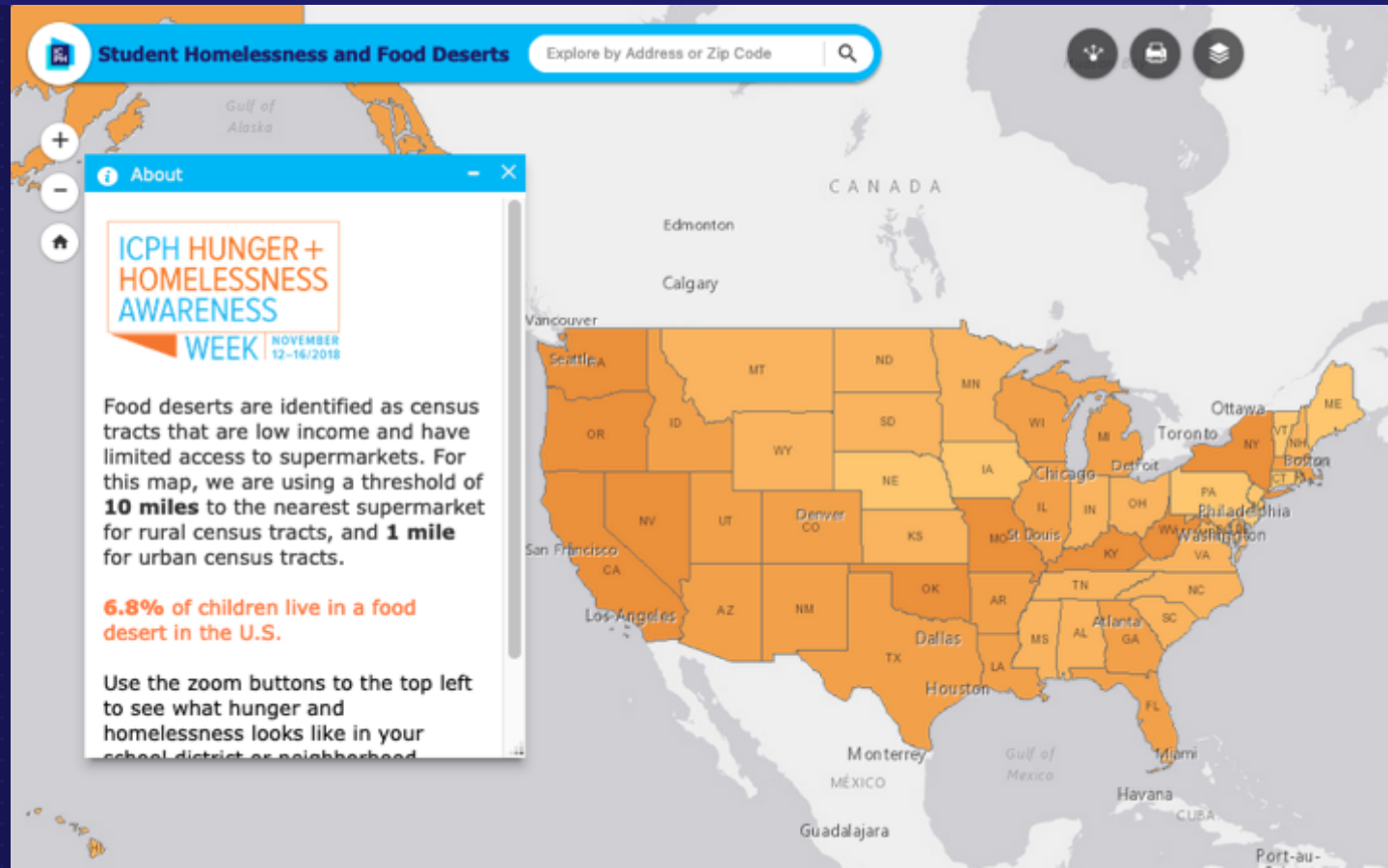
- Local picture of homelessness—varies district by district
- Able to view severity of Homelessness by various municipal boundaries.



[Explore the web map.](#)



Student Homelessness & Food Deserts



Student Homelessness & Food Deserts

What is a food desert?

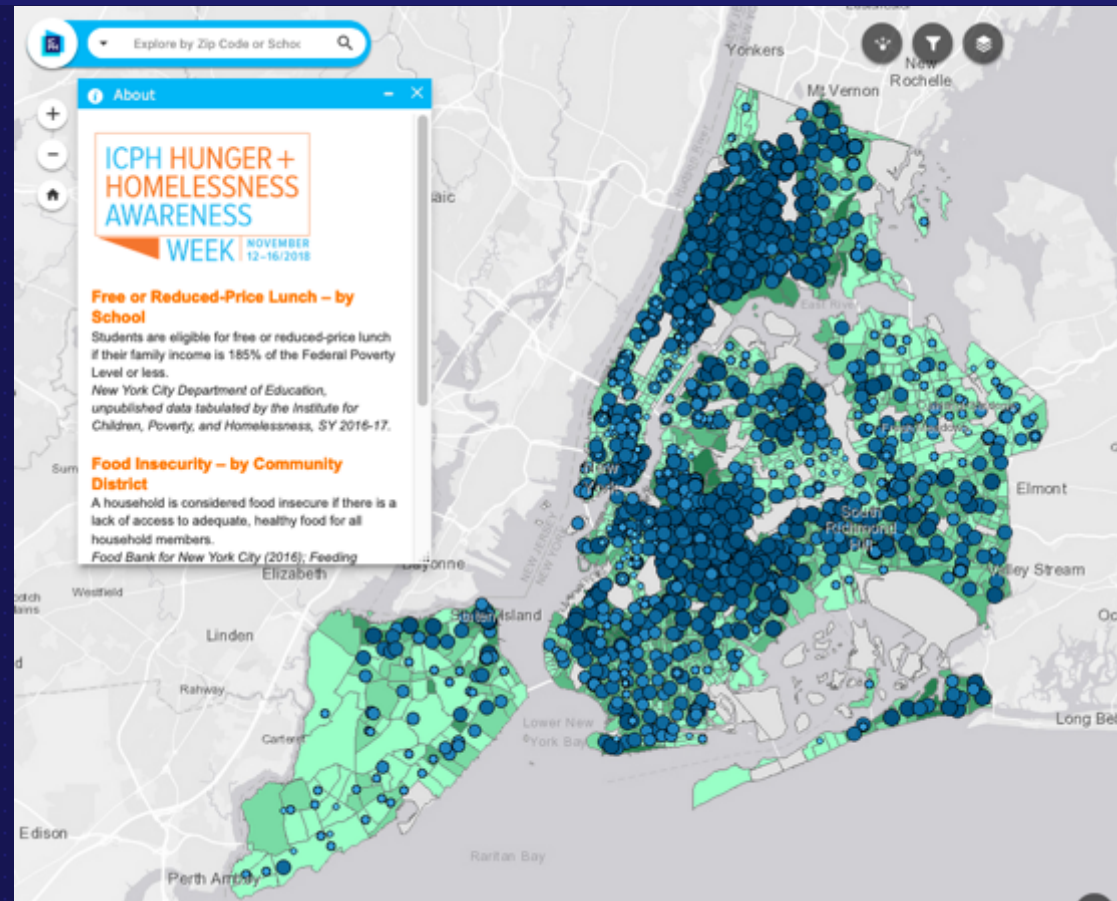
- A census tract that is majority low-income AND having limited access to a supermarket.
- For this map, we are using a threshold of 10 miles to the nearest supermarket for rural census tracts, and 1 mile for urban census tracts.

6.8% of children live in a food desert in the U.S.



[Explore the web map.](#)

Food Insecurity and NYC's Student Homelessness



Food Insecurity Criteria

Free or Reduced-Price Lunch – by School

- Students are eligible for free or reduced-price lunch if their family income is 185% of the Federal Poverty Level or less.

Food Insecurity – by Community District

- A household is considered food insecure if there is a lack of access to adequate, healthy food for all household members.

Food Stamps/Supplemental Nutrition Assistance Program (SNAP) – by Census Tract

- A household is eligible for food stamps or SNAP benefits if their household income is 130% of the Federal Poverty Level or less, in addition to employment requirements.



[Explore the web map.](#)

Who has been interested and how has this been helpful?

- NYC Department of Education
- Community Organizations and Advocacy Groups
- Local Government
- Media
- Foundations

Local level data helped make the case for additional STH support services:

- STH Social Workers & Attendance teachers
- Increased funding support for STH middle and high school enrollment
- Creation of new School Based Health Centers
- RFP from Deutsche Bank
- Broader recognition of STH as group in need of additional support services and attention
- Funding for homeless students in Seattle

Questions?





Thank You!

media@ICPHusa.org

(212) 358-8086

To download copies of our publications:
<http://www.ICPHusa.org/reports/>

