

# Realizing New Possibilities

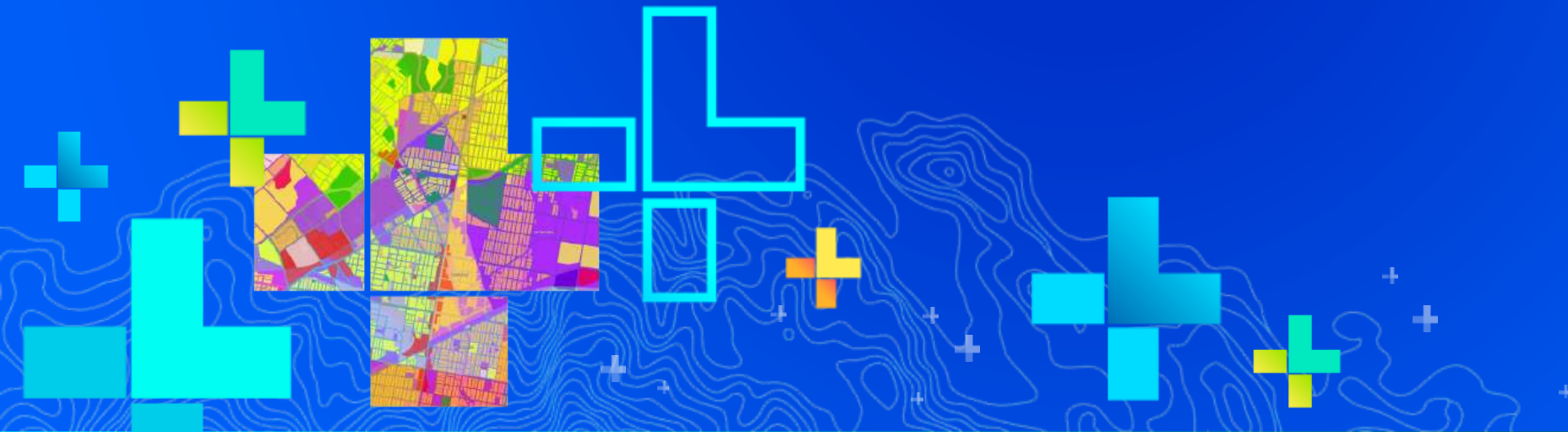
## The Utility Network at Duquesne Light



**Alan Hope, GIS Manager, Duquesne Light Company**

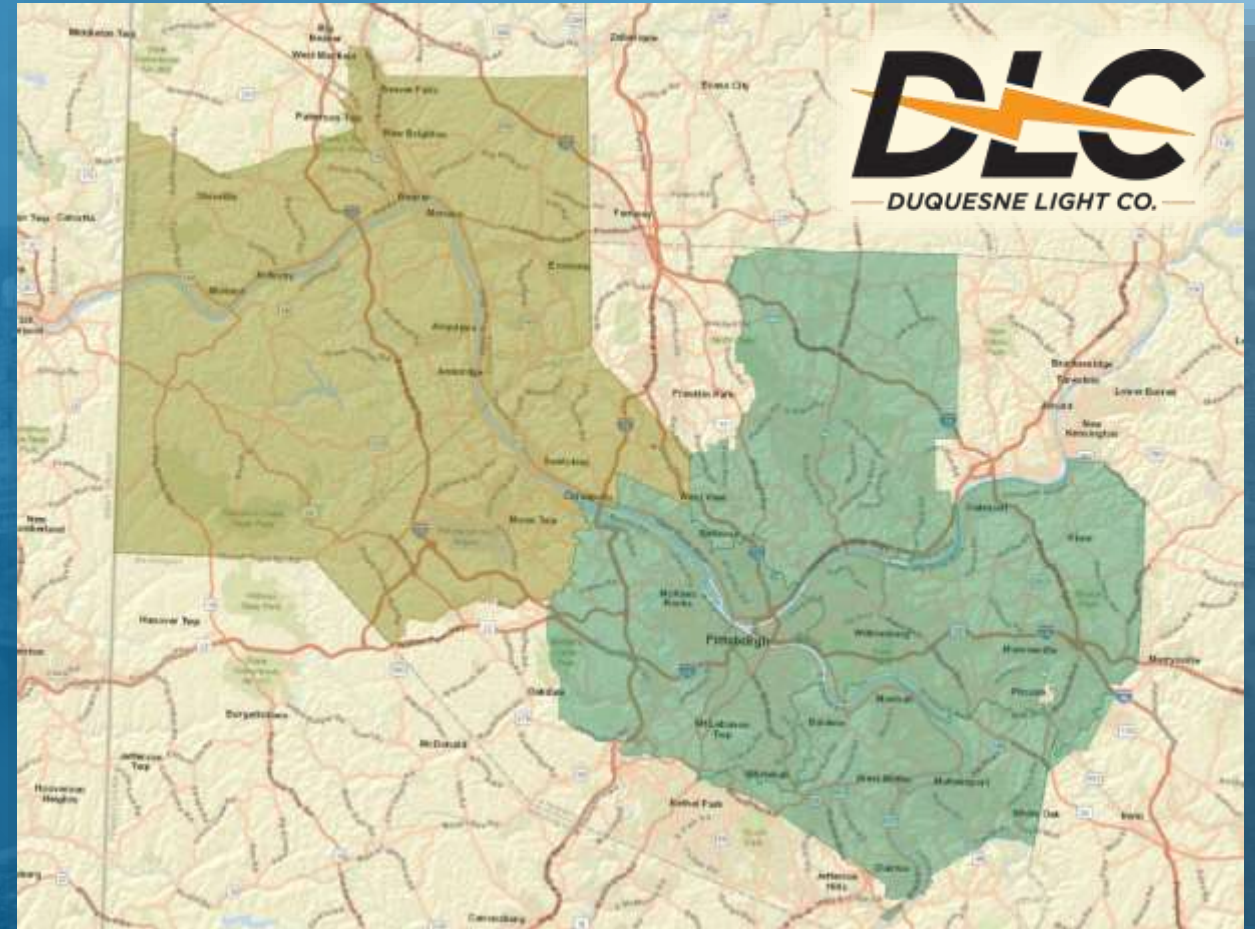
Deepak Kaul, Solution Architect, Schneider Electric

Juul Dijkstra, Product Manager, Schneider Electric



# Duquesne Light Company

- Located in Pittsburgh, PA
- Investing \$2.9B in infrastructure and technology
- 817 square miles in Allegheny and Beaver counties
- 175 Company Owned Substations
- 650 Distribution and Sub-Transmission Feeders
  - 4kV – Distribution
  - 23kV – Distribution & Sub-Transmission
- 600,000 Electric Customers
- Over 1,500 full time employees
- Current GIS group – 5 Technicians/5 GIS Analysts





# Current State of DLC GIS

## Ad-Hoc GIS System

**Regulated Inspections**  
**1 SDE Instance and Hosted Data**  
**(ArcGIS Collector & Survey 123)**

**Annually**  
**18000 Pole Inspections**

**15% of our at**  
**or below grade Transformers**

**15% of our Manholes**

**Downtown Network Inspections**

**20% Overhead Primary Circuits**

**Point and Line Asset Data**  
**3 SDE Instances**  
**(Managed in ArcMap)**

**300000+ Poles**  
**20000+ Below Grade Transformers**  
**4000+ Switchable Devices**  
**75% of Overhead Primary**  
**Distribution Line Locations**  
**Overhead Transmission Facilities**  
**Underground Transmission**  
**Facilities**  
**Third Party Attachment Data**

**Portal for ArcGIS**

**Visualization for**  
**Point and Line Asset Data**

**Enable business workflows**

**Vehicle electrification**

**Landslide aggregation**  
**& Analysis**

**Engineering Transmission**  
**facilities risk mitigation study**

**Smart meter antenna**  
**connectivity Analysis**

**ArcGIS Enterprise 10.5.1 System – Over 470 Users**

# System Silos – Current State of mapping at DLC

## Human Glue

Ad-Hoc GIS Data Model  
No Connectivity or Rules

10 Types of AutoCAD Maps  
all Non spatial in nature

- Construction Drawings
- Non Spatial in nature

- No Secondary or Service Mapped
- Customer to Transformer Relationship unknown

Sub Optimal  
• As-built\As Designed mapping process

## Isolated Systems

Oracle CC&B  
Customer Information System

Oracle WAM  
Work Management System  
(Asset component not used)

Oracle Primavera P6  
Construction Scheduling

Sept '19

IBM Maximo  
Work, Asset and Scheduling



# ADMS Program

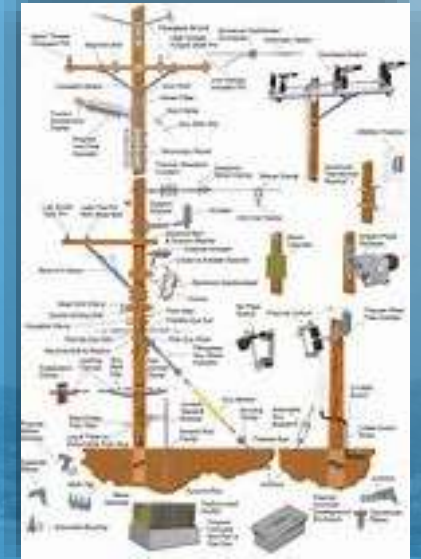
## Advanced Distribution Management System – 6 Projects



Distribution SCADA  
(Holistic SCADA)



Electrical Model



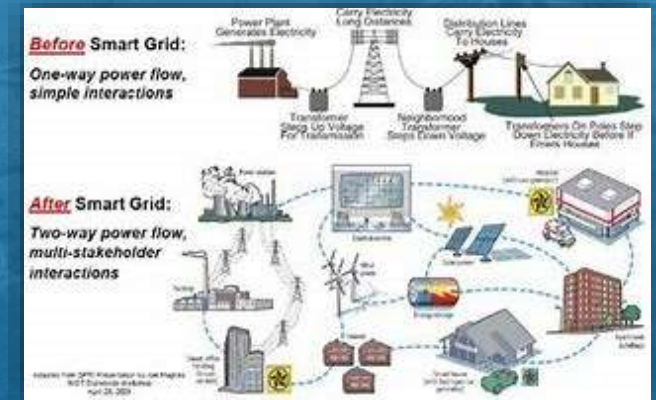
Engineering Design



Outage Management



Field Survey



Distribution Management



# Decision to Adopt the Utility Network

## Partnering with Schneider on the Journey

### Utility Network Risks

- Product maturity
- No Electric Production Implementations
- ArcFM Suite maturity
- Placing DLC on the “Bleeding Edge” and not being a preferred “Fast Follower”
- Downstream projects would not have mature integrations developed against the UN

### Utility Network Reward

- No initial GN Data Model or Data
- ESRI Product Influencer
- ArcFM Suite product influencer
- No data migration project
- ESRI projecting 20+ years of development for Utility Network
- Systems integrations which will not have to migrate

# Implementation

The UN at Duquesne Light Company



# The Journey So Far...

## System Architecture

- ArcGIS Enterprise, Utility Network, ArcFM XI Ecosystem
- DLC IT Standards , Enterprise Systems and In-flight projects

## Data Model

- Core Team Training
- Data Model Workshops & model iterations

## Implementation

- Business & Technical Workshops
- Establish Non-Prod & Prod Environments

## Support Distribution Field Inventory

- Prepare Surveys, Redlines for QA of Field Inventory
- Data Load and Validation of Asset Packages

## Integrations

- Deployed Document Management System Integration
- CC&B, Maximo Integrations past Design stage-gate



# Solution Overview

- GIS Editing Solution

- ArcGIS Pro w/ ArcFM Editor XI
- ArcGIS Enterprise based Authentication



- Field Mobility Solution

- ArcFM Mobile XI
  - ArcGIS Runtime App
  - ArcFM XI SSO
  - ArcGIS Enterprise based Auth
  - Survey123 Integration



# Solution Overview

- Web Viewer

- ArcFM Web XI
  - ArcGIS JavaScript based
  - ArcGIS Enterprise based Auth



- Integrations

- Duquesne Light Azure Service Bus
- ArcFM XI Job Services Framework



- GIS Administration Interface

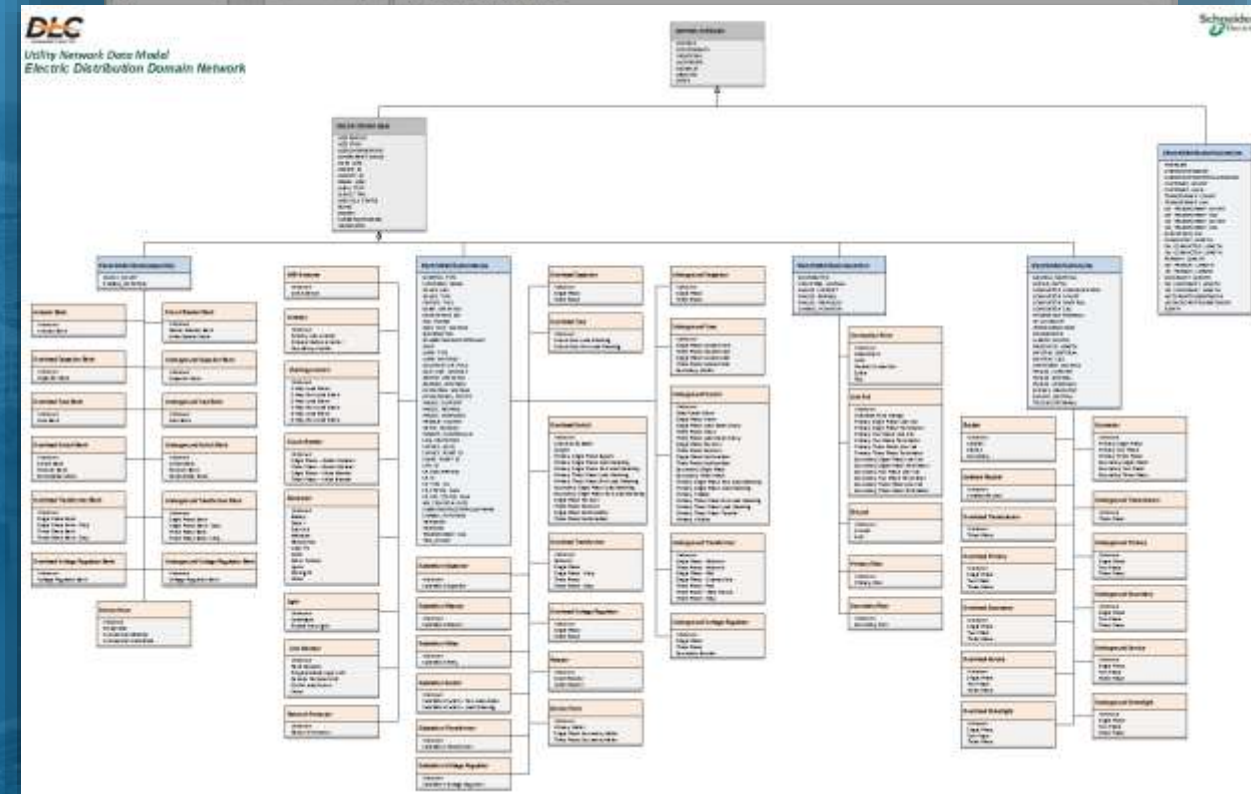
- ArcGIS Enterprise
- ArcFM XI Solution Center





# Utility Network Data Model

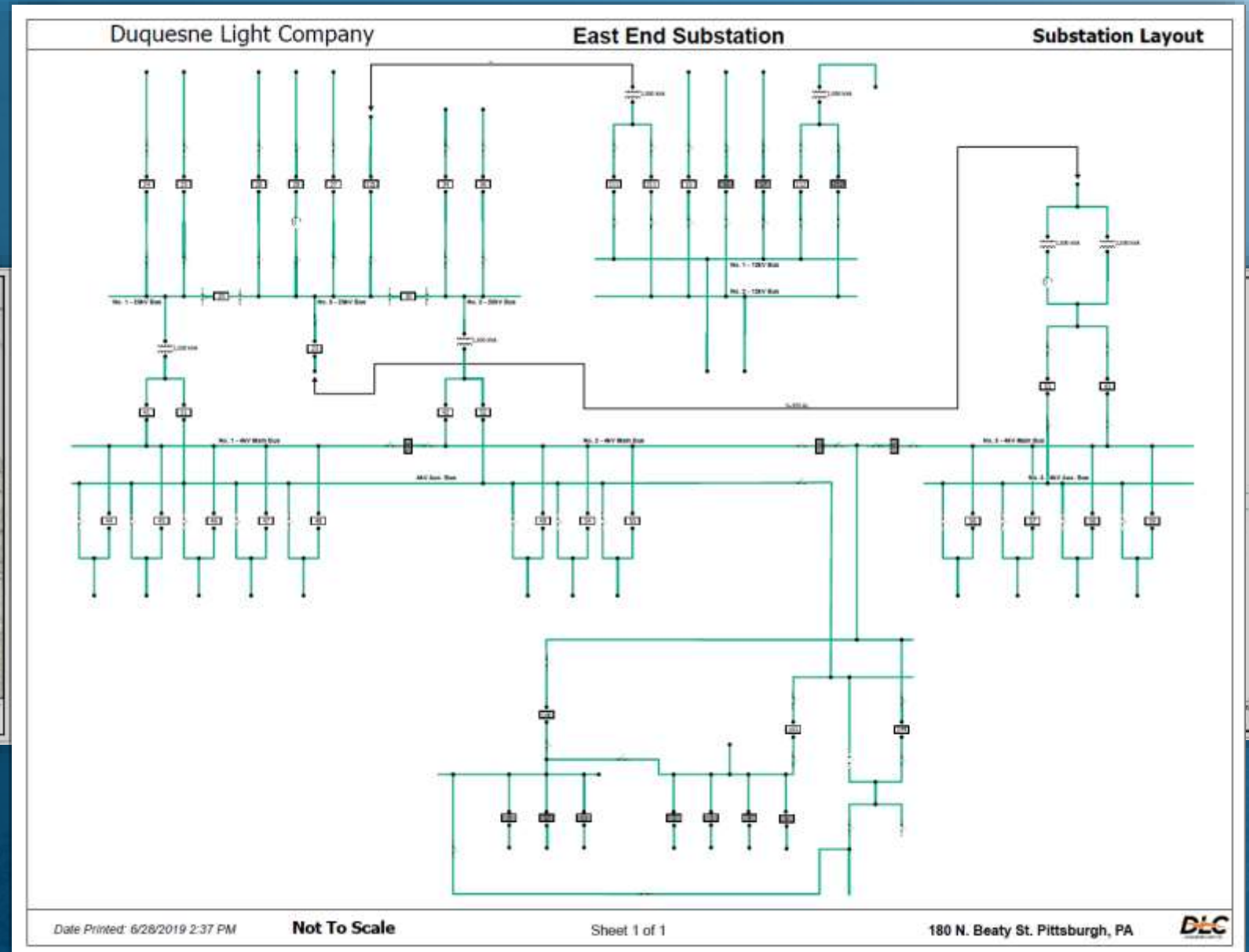
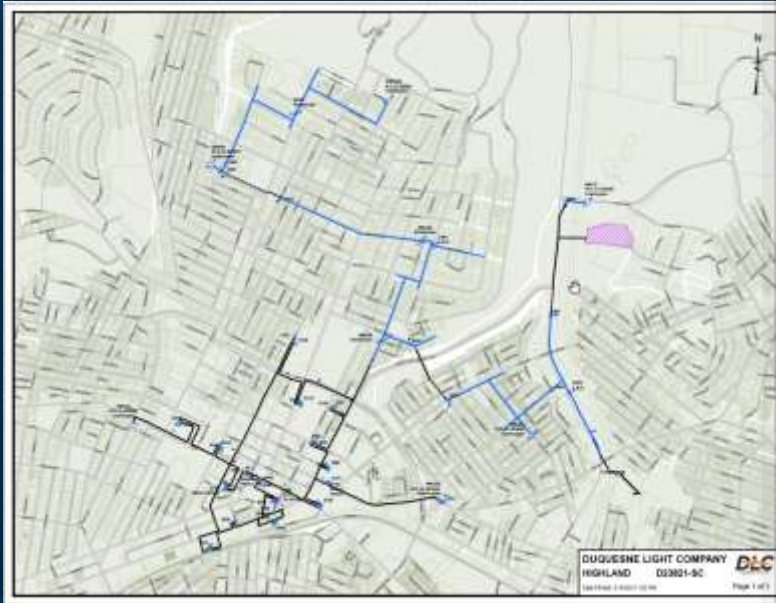
- Core team Training
  - Familiarize Team with UN & ArcFM XI
  - Hand-On using Azure based ArcFM EXI Training
- Data Model
  - Spreadsheet based Business Review
  - Asset Package Generator
  - Defined additional Asset Groups/Type for
    - OH/UG facilities
    - Substation Internals
  - Defined per Circuit Subnetwork Summaries for
    - Conductors (OH/UG)
    - Customer Count & Load
    - Transformer kVA



09	Device	Light	427	Private Area Light	
90	Device	Line Monitor	0	Unknown	
91	Device	Line Monitor	428	Fault Indicator	DEFAULT
92	Device	Line Monitor	429	Programmable Logic Unit	

# Map Products

## Circuit Map

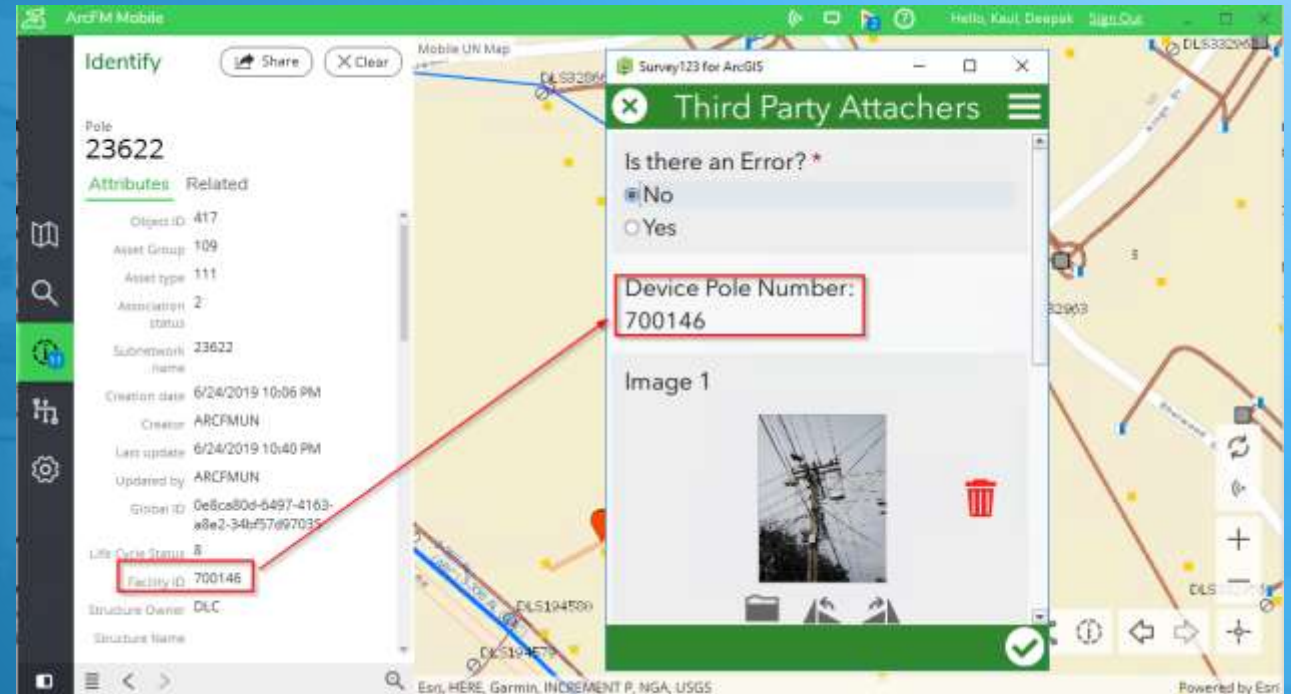




# Support Distribution Field Inventory

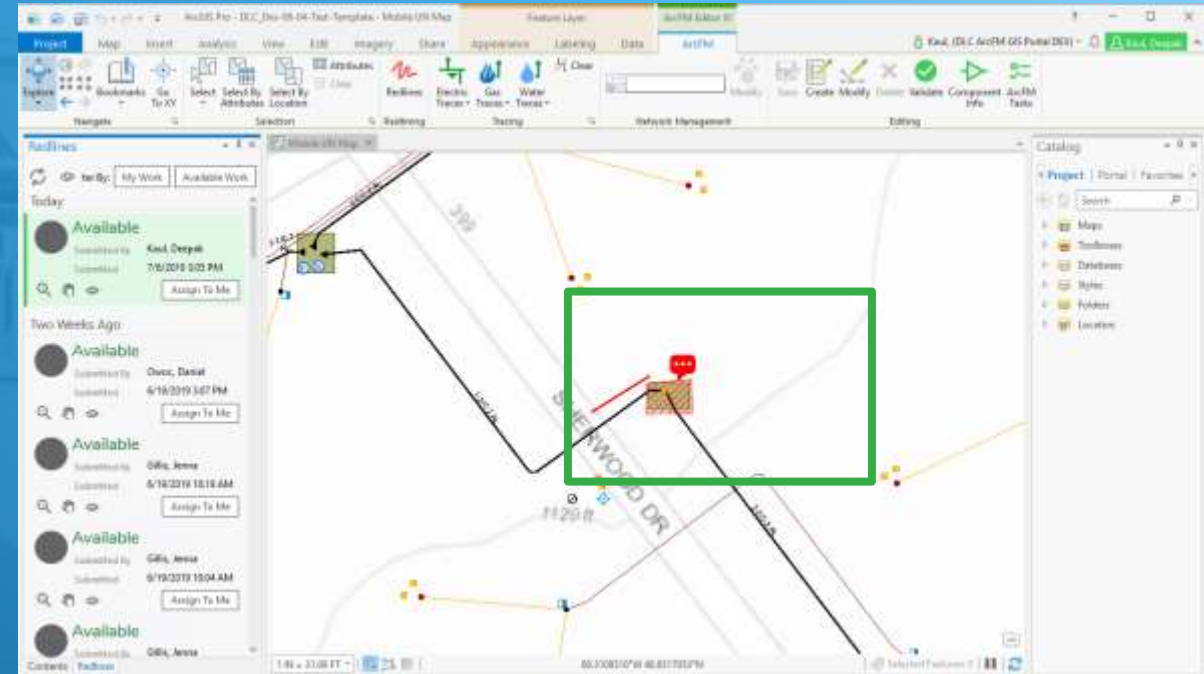
## Field Surveys and Redlines

- Identify at Asset Group Level
- Select Survey
- Launch Integrated Survey123
- Automated Field population



# Support Distribution Field Inventory

## Redlines – From Field to Enterprise



### • Field Redlines

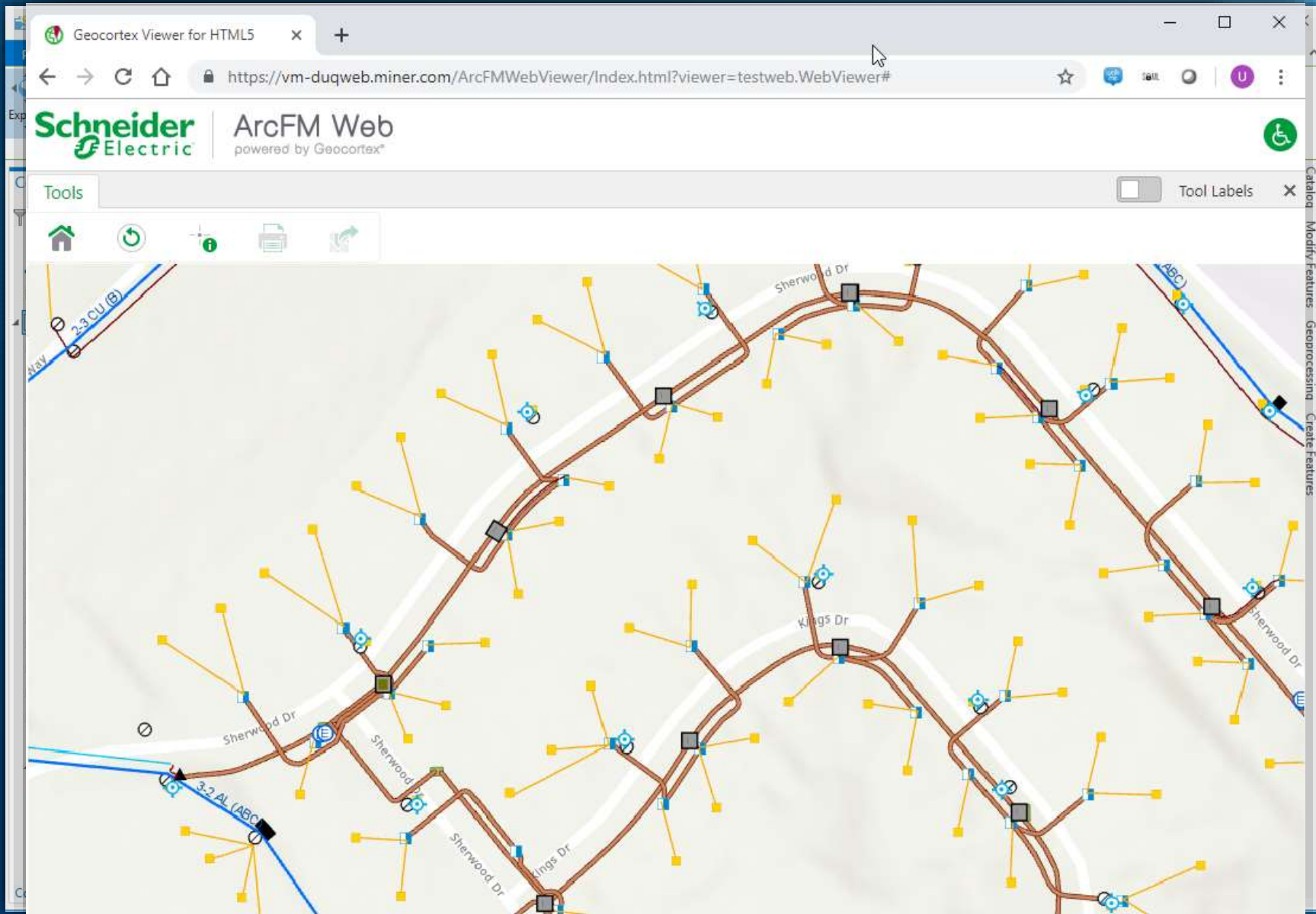
- Captured offline/connected mode using ArcFM Mobile XI built in ArcGIS Runtime
- Synced when connected

### • Enterprise Redline Workflow

- Available in ArcFM Editor XI Redline pane for GIS Editor built in ArcGIS Pro
- Task completion provides automated In-App notification to field user



# Map Display across Applications



ArcFM Web Viewer  
ArcGIS Essentials

# GIS Integrations

Map Products based on Circuit change detection

Managing customer to transformer relationship

- CIS integration to place & manage service point installation and removals

Maximo & Maximo Spatial integration

- Utilize ArcFM XI Session Manager for Maximo initiated work
- Provide UN data within Maximo Spatial



REST

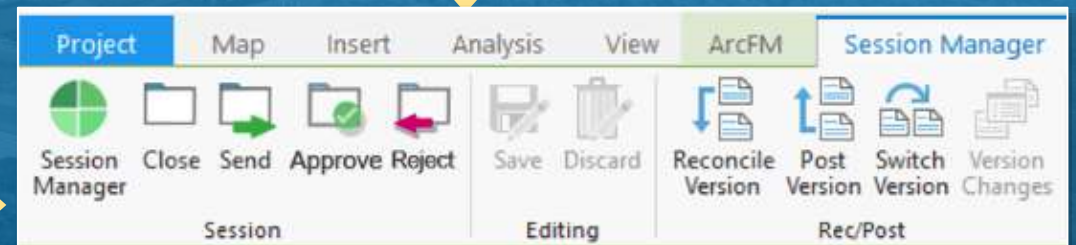


REST



SOA  
Microservices  
Azure Service Bus

REST





# GIS Integrations

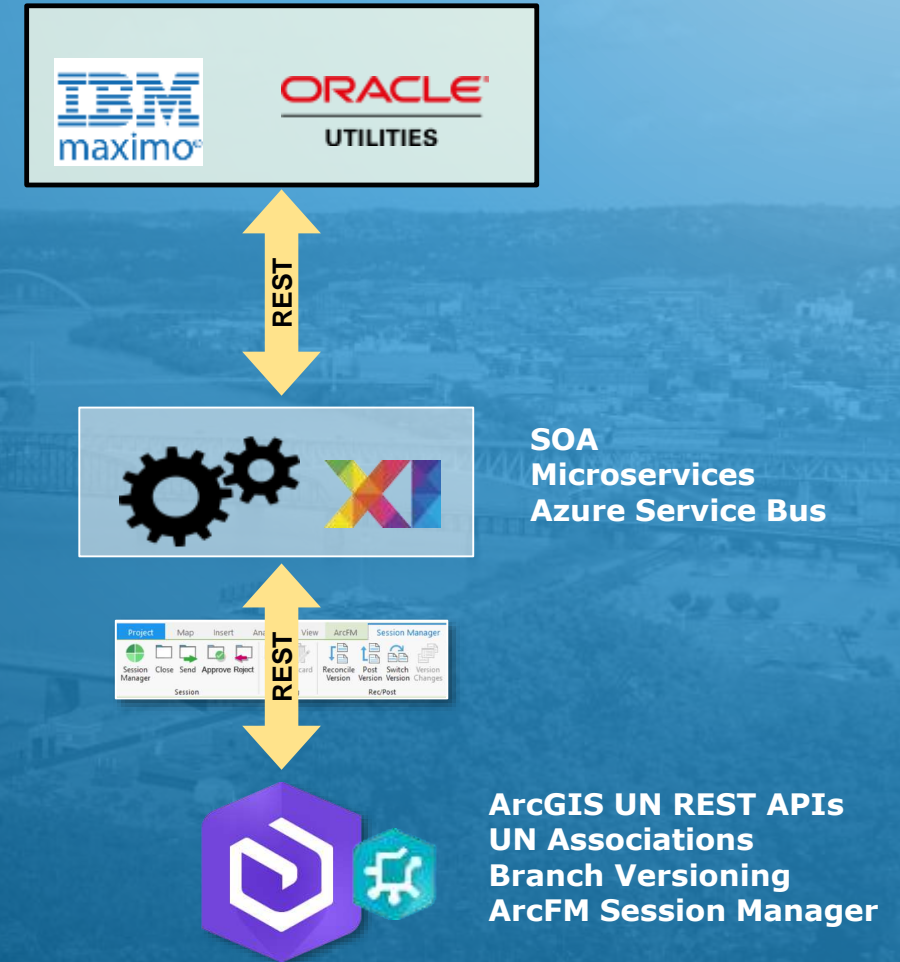
Map Products based on Circuit change detection

Managing customer to transformer relationship

- CIS integration to place & manage service point installation and removals

Maximo & Maximo Spatial integration

- Utilize ArcFM XI Session manager for Maximo initiated work
- Provide UN data within Maximo Spatial



# Identified Benefits

## ArcGIS Pro w/ ArcFM Editor XI deployment

- Maintain data model
- Automated map products based on updates to the UN

- **ArcFM Mobile XI deployment**

- Perform QA of field inventory
- Support Operations field activities

- **ArcFM Web XI deployment**

- Support Back Office & Operations activities

## Automated App Updates

- New features, Enhancements and Bug fixes (e.g. Vector TPK Support, App Integrations)

- **Future Enhancements**

- **Underground Duct management**
- **Offline Tracing**
- **Web Tracing**



# Looking Ahead

- **Upgrades**

- ArcGIS Enterprise 10.7.x
- ArcGIS Pro 2.4
- ArcFM Editor XI

- **Implement ArcFM XI Session Manager**

- **Deploy Integrations**

- Maximo Integration
- CC&B Integration
- ADMS Integration?

- **Support Field Inventory work**

- **Load 600+ Circuits in the Utility Network model**

# Questions?







esri

THE  
SCIENCE  
OF  
WHERE