

**In an active shooter situation,
every minute saved - saves lives.**



The Active Shooter Era: GIS for critical incident planning and response

Esri User Conference - User Presentation

July 10, 2019

Key Questions

- Where is the incident?
- How do we get to it?

Key Questions

- **Where is the incident?**
- **How do we get to it?**

As a public safety agency, how do we prepare to answer these questions as QUICKLY as possible?



East Whittier United Methodist Preschool

10005 Cole Rd • 562-698-1027

Preschool
District: Private



External Gate



School Office



Library



Open Area



Building Footprint

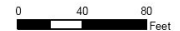


Internal Building Division



School Property

1 Inch = 60 Feet



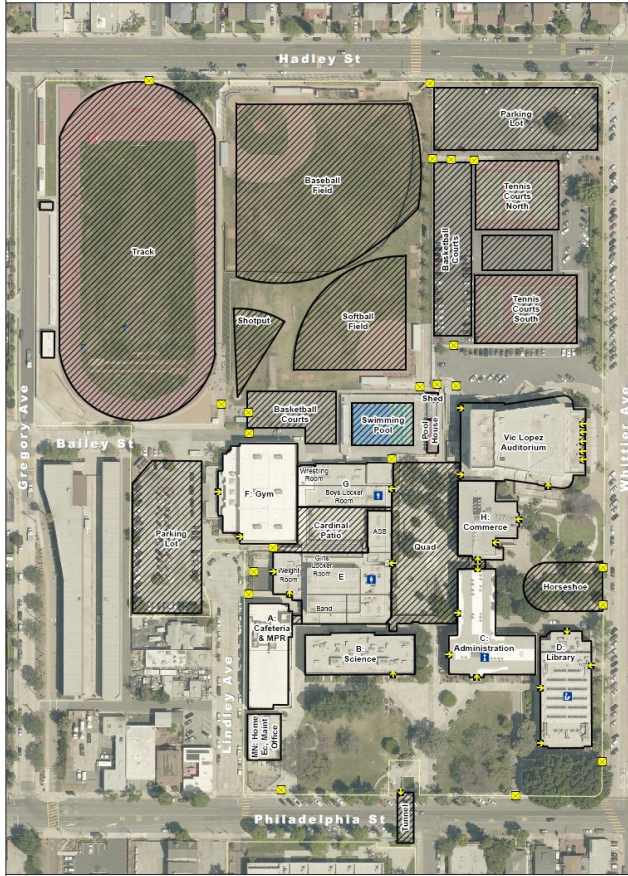


PSA 2
Page 2-5

Whittier High School - North

12417 Philadelphia St • 562-698-8121 ext. 2000

High School
District: WUHS



External Gate School Office Building Footprint Internal Building Division
Building Entrance Library Open Area School Property

1 inch = 107 Feet
6 75 100 Feet

Updated: 9/23/2018, imagery from 2017



PSA 2
Page 2-6

Whittier High School - South

12417 Philadelphia St • 562-698-8121 ext. 2000

High School
District: WUHS



External Gate School Office Building Footprint Internal Building Division
Building Entrance Library Open Area School Property

1 inch = 82 Feet
0 30 60 Feet

Updated: 9/23/2018, imagery from 2017



Whittier College and Broadoaks Children's School

13406 Philadelphia St • 562-907-4211

Whittier College: Undergraduate College
Broadoaks: Preschool, Elementary, Middle
District: N/A



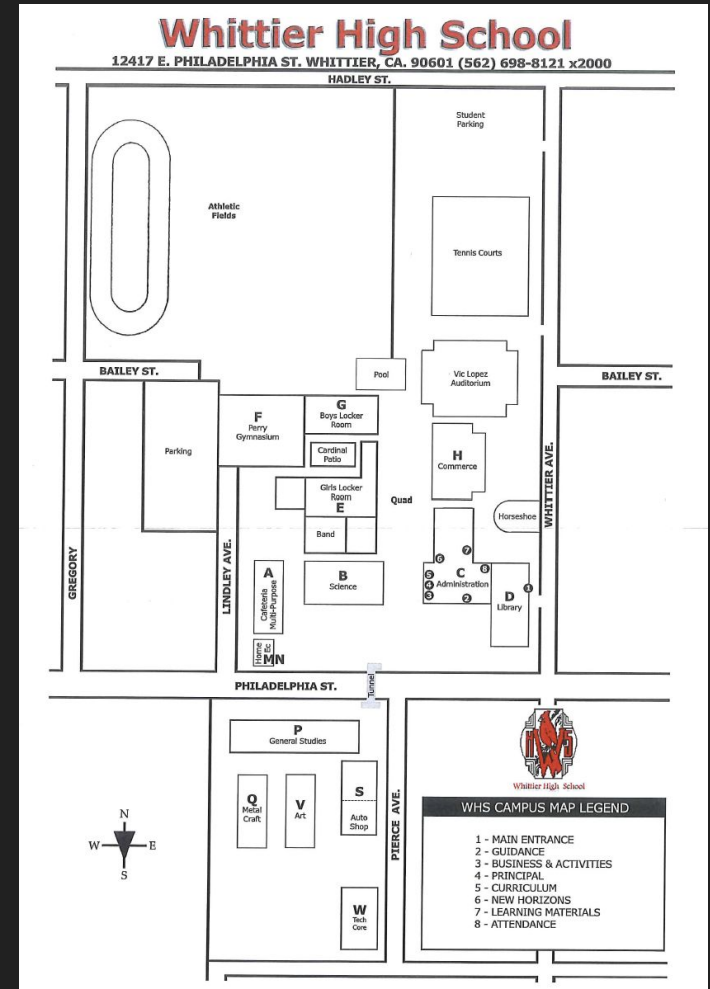
Building Footprint Broadoaks School Building
Open Area 10' Contour

1 Inch = 100 Feet
0 100 200 300 Feet

Updated 5/23/2018, Imagery from 2017

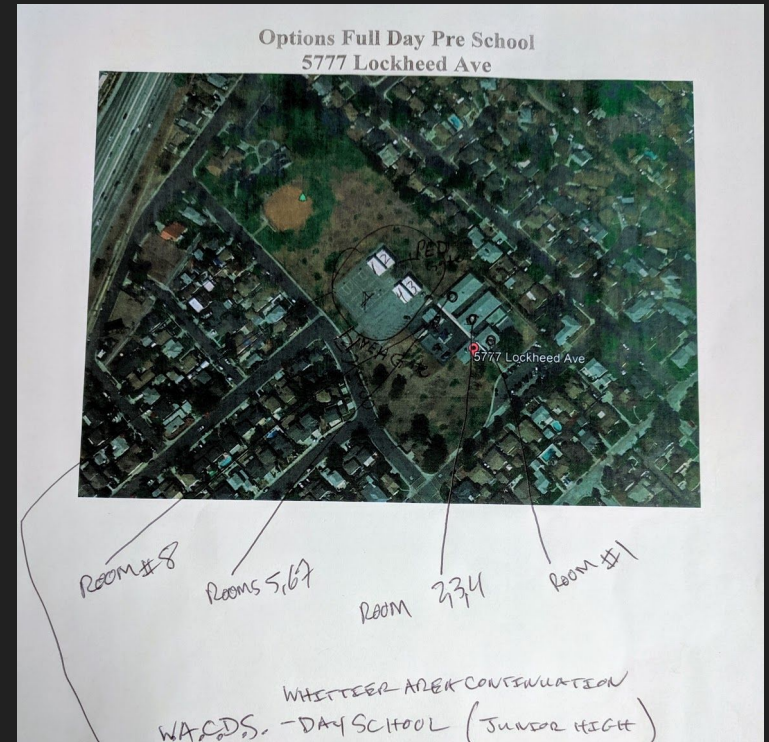
Process

- **Step 1: Visit schools**
 - Get data from the source
 - Bonus: build relationships and provide safety tips



Process

- **Step 2: Take Notes**
 - These "first drafts" varied widely based on the officer and school admin



Process

- **Step 3: Microsoft Word**
 - This was the working document for some time
 - A proactive solution by PD officers without GIS training



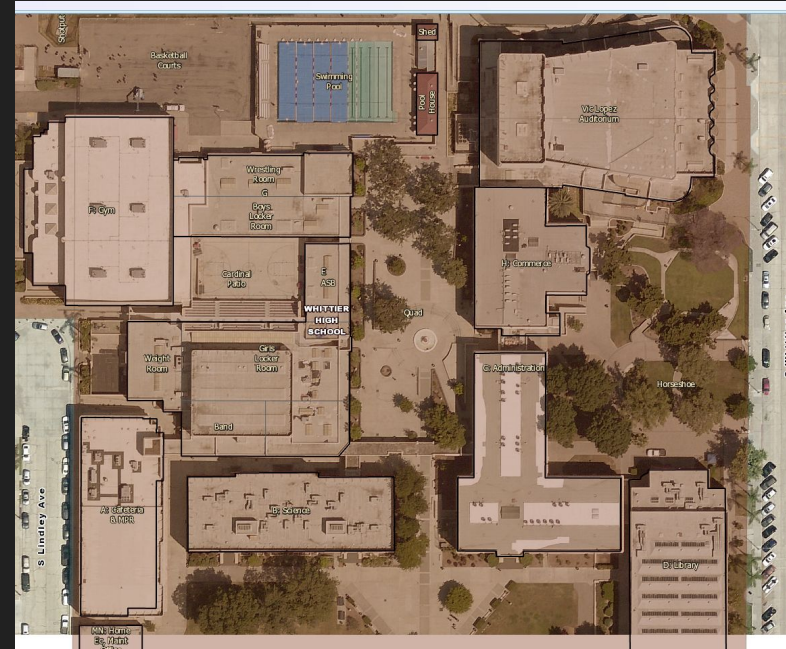
Process

- Step 4: GIS
 - **Accuracy:** scale, location, and direction
 - **Reproduction & Consistency:** Data-Driven Pages
 - **Efficiency:** feature editing with ArcMap tools
 - **Digital:** layers used with both print maps and CAD software for Dispatchers
 - **And more**
- Step 5: Drafts go back to the PD officers & schools



Process

- **Step 6: Map Service**
 - Layers shared with CAD/RMS Dispatch application
 - Dispatchers can see layers without switching apps & can provide direction to officers on scene



Products

1. Small- and large-format print maps
2. Digital PDFs
3. Layers in CAD dispatch software

Bottom line

Incident Maps are an essential preparedness tool, which are possible for any agency to replicate.

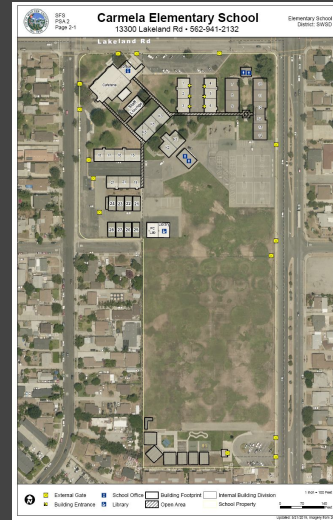
Bottom line

Incident Maps are an essential preparedness tool, which are possible for any agency to replicate.

(It's just an aerial map)

But!

What makes this map more than just an aerial map?



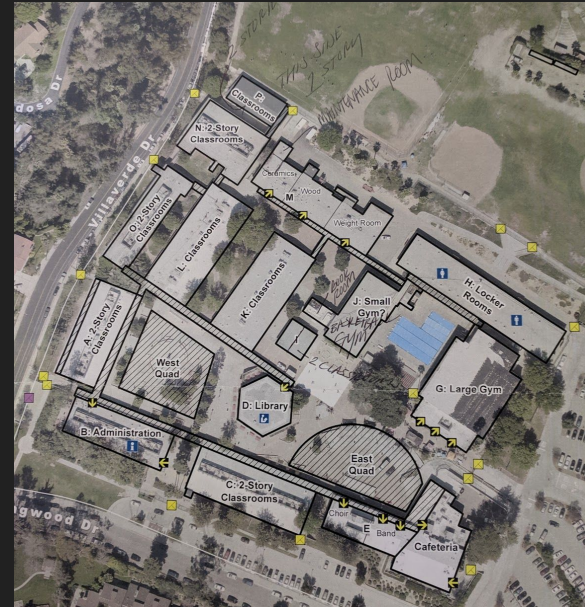
Answer!

Collaboration & Training

Think: Can any officer on the street tell you how to find this information?

Next Steps

- **Step 7: Repeat!** (except the MS Word part)
 - The plan is to continue to refine the maps with annual meetings between officers & schools
 - Do you have any ideas for us?



Thank you!

Shannon Julius, GISP

GIS Analyst, City of Whittier

sjulius@cityofwhittier.org

