

# Tulare Lake Basin Water Quality Analysis Using ArcGIS Insights



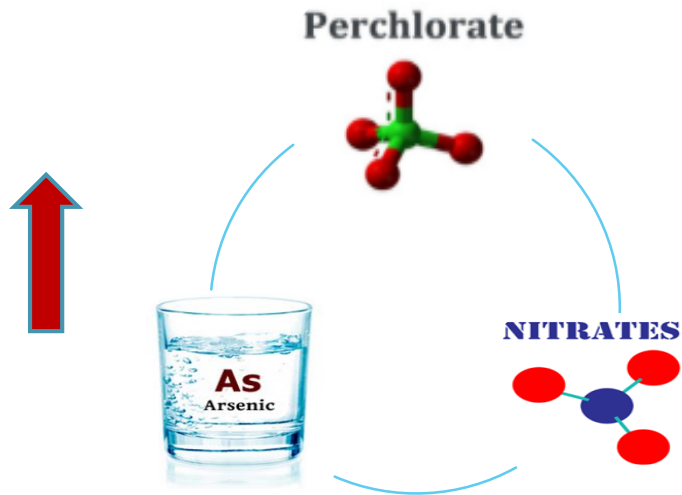
Ravi Dhaliwal  
Business Intelligence Analyst  
Tulare County IT  
[rdhaliwal@co.Tulare.ca.us](mailto:rdhaliwal@co.Tulare.ca.us)



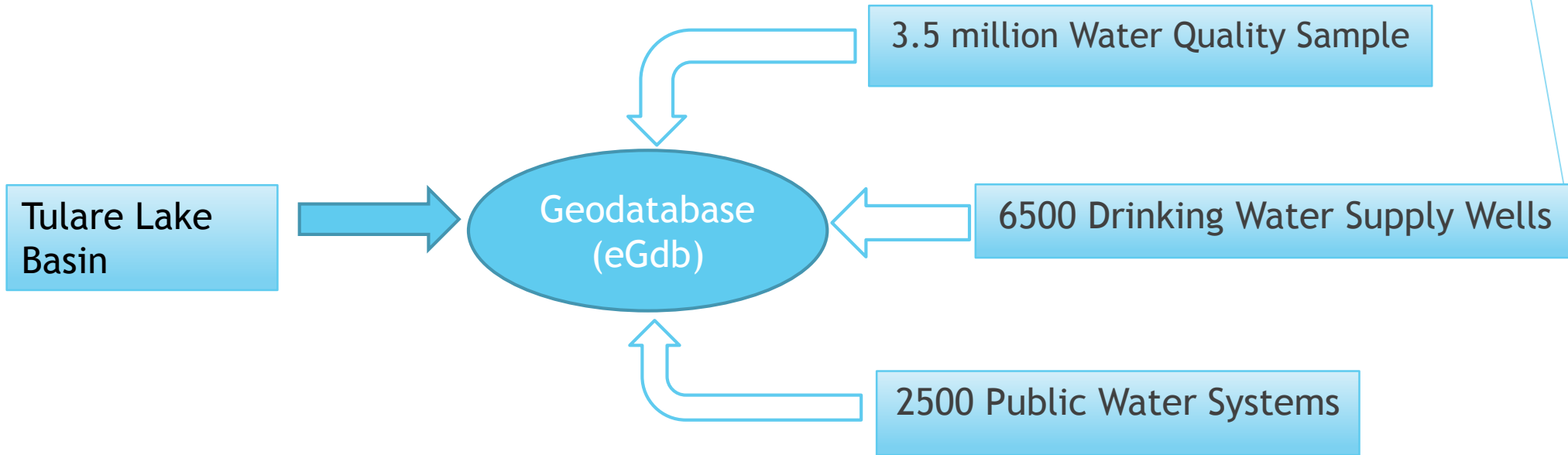
# Small Rural Communities facing Common Problem of →



Inadequate supply of  
drinking water that does not  
meets Quality Standards




# Workflow






## Welcome Raviinder Dhaliwal


### RECENT WORKBOOKS




JUNE 26, 2019  
NO3 06/26/2019




APRIL 4, 2019  
Tul\_Basin\_NO3 Analysis



APRIL 4, 2019  
TUL\_LakeBasin GIS Collaborative\_N...

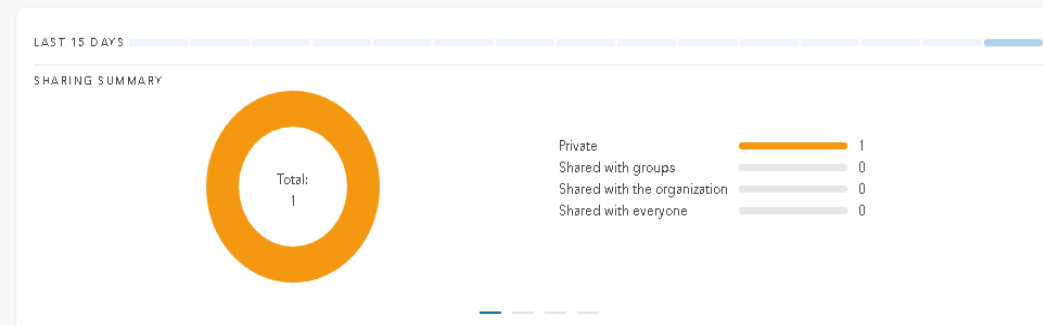


APRIL 3, 2019  
4/3/2019\_test\_ravi




JANUARY 16, 2019  
TUL\_LakeBasin GIS Collaborative\_A...

### PULSE



### FAVORITES



No favorites yet

Tap the star icon on an item to add it to your favorites

### WHAT'S NEW

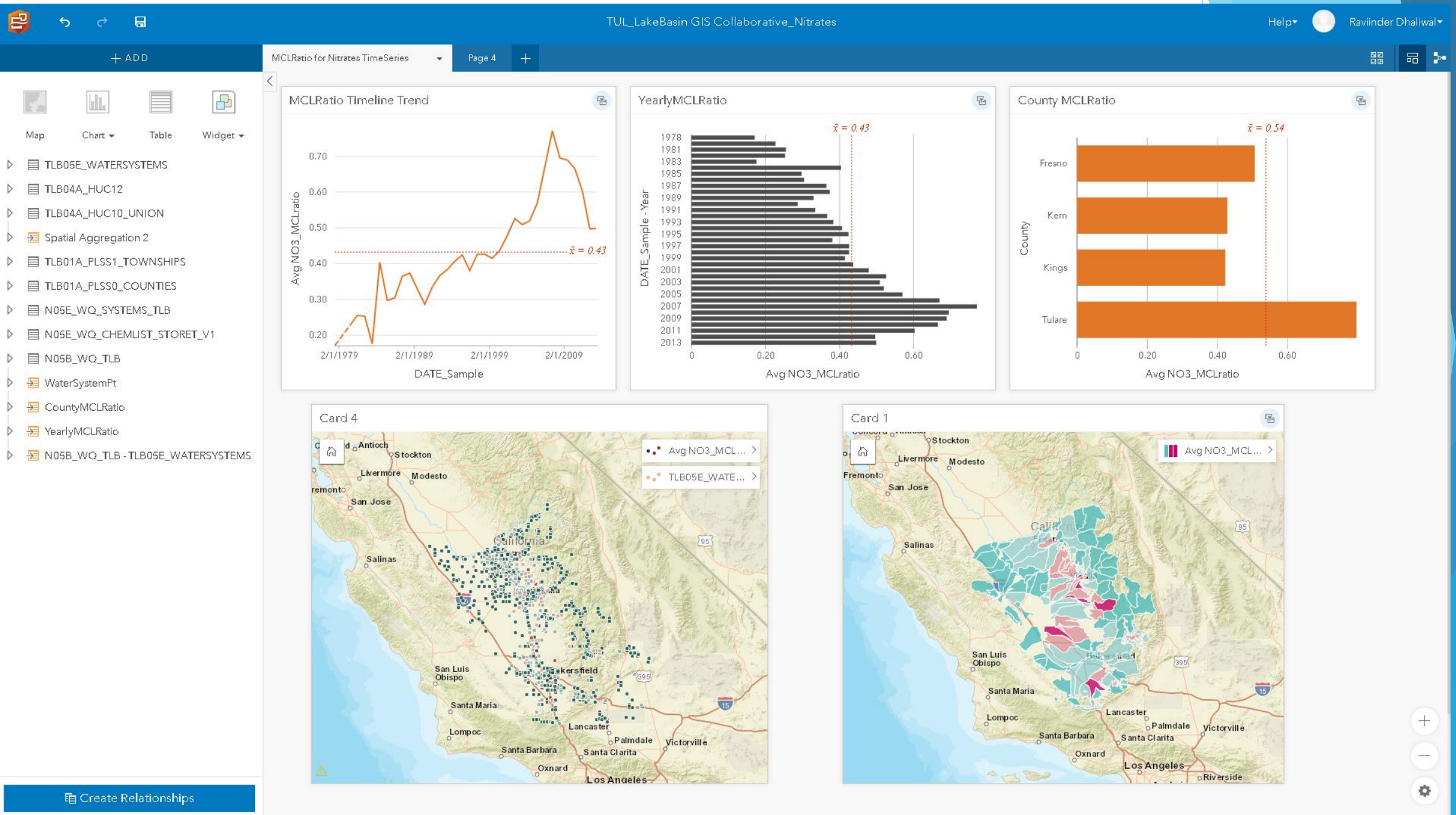
#### Home page

The Insights home page has been updated with enhanced design and functionality. It now includes the most recently created or updated workbooks, items in your Favorites list, Insights statistics usage, and a list of new features in the current Insights release.

[READ MORE >](#)



# Workbooks in Insights



## Tables and Calculated Fields

Map Chart Table Widget

+ ADD

- TLB05E\_WATERSYSTEMS
- TLB04A\_HUC12
- TLB04A\_HUC10\_UNION
- TLB01A\_PLSS1\_TOWNSHIPS
- TLB01A\_PLSS0\_COUNTIES
- N05E\_WQ\_SYSTEMS\_TLB
- N05E\_WQ\_CHEMLIST\_STORET\_V1
- N05B\_WQ\_TLB**
- N05B\_WQ\_TLB - TLB05E\_WATERSYSTEMS

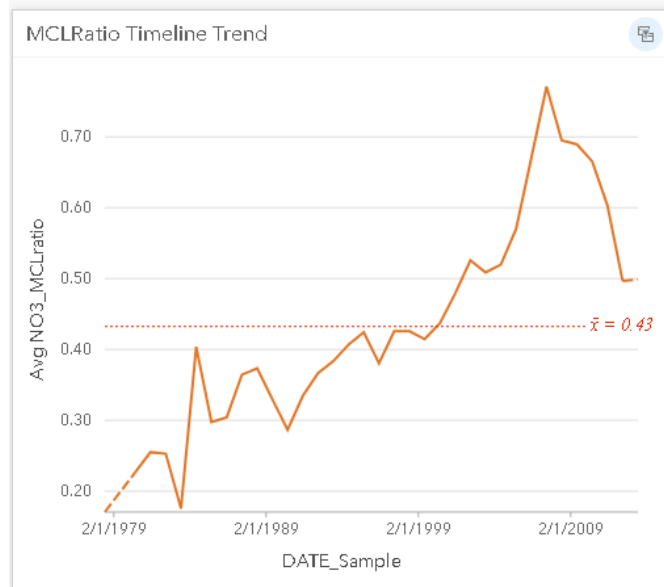
N05B\_WQ\_TLB

+ Field fx FINDING/45 Run ?

	Data...	gX...	gY...	NO3_MCLratio
361	A+	20,684.8693	-136,735.1861	0.1889
361	A+	20,684.8693	-136,735.1861	0.2133
361	A+	20,684.8693	-136,735.1861	0.1911
361	A+	20,684.8693	-136,735.1861	0.2044
411	A	16,087.8399	-160,982.4411	0.2067
411	A	16,087.8399	-160,982.4411	0.1778
411	A	16,087.8399	-160,982.4411	0.1956
361	A+	20,684.8693	-136,735.1861	0.0889
361	A+	20,684.8693	-136,735.1861	0.0978
411	A	16,087.8399	-160,982.4411	0.1822
411	A	16,087.8399	-160,982.4411	0.1933
549	A	-1,617.9627	-209,338.0649	0.0756
549	A	-1,617.9627	-209,338.0649	0.1022
572	A	16,063.3631	-148,090.1572	0.4667

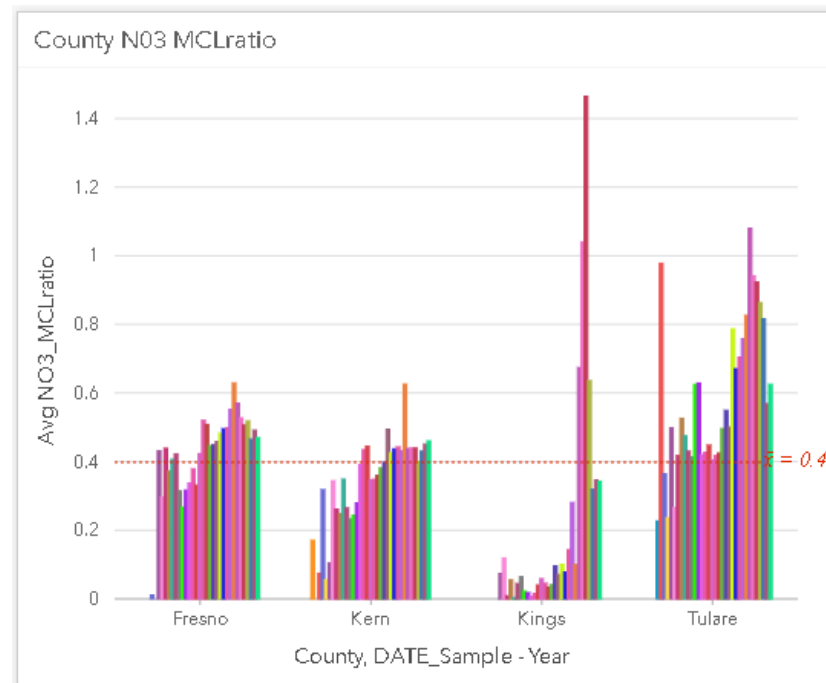
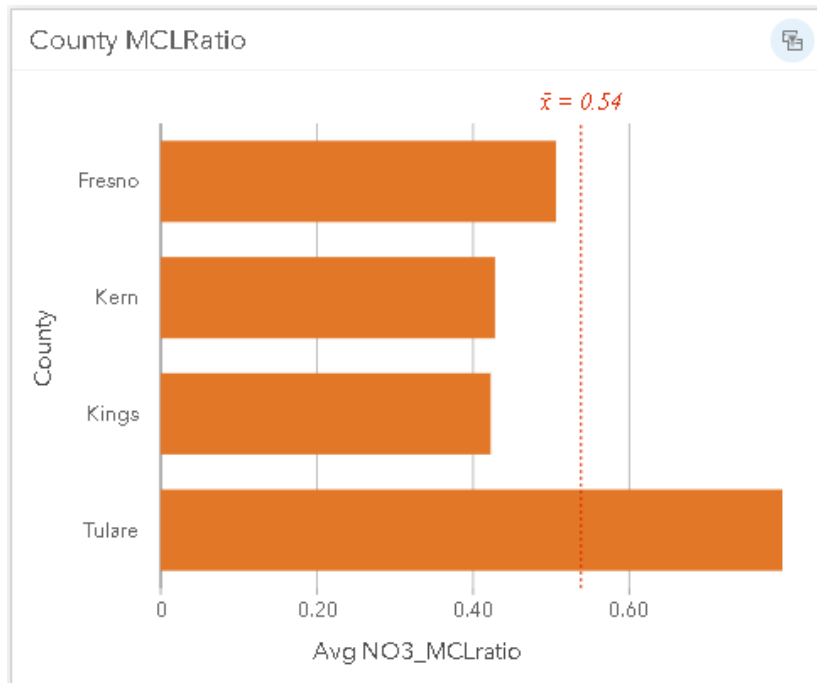
Selected Records: 0 Total Records: 102384

# Visualization Types (Time Series, Bar/Column Charts ..)



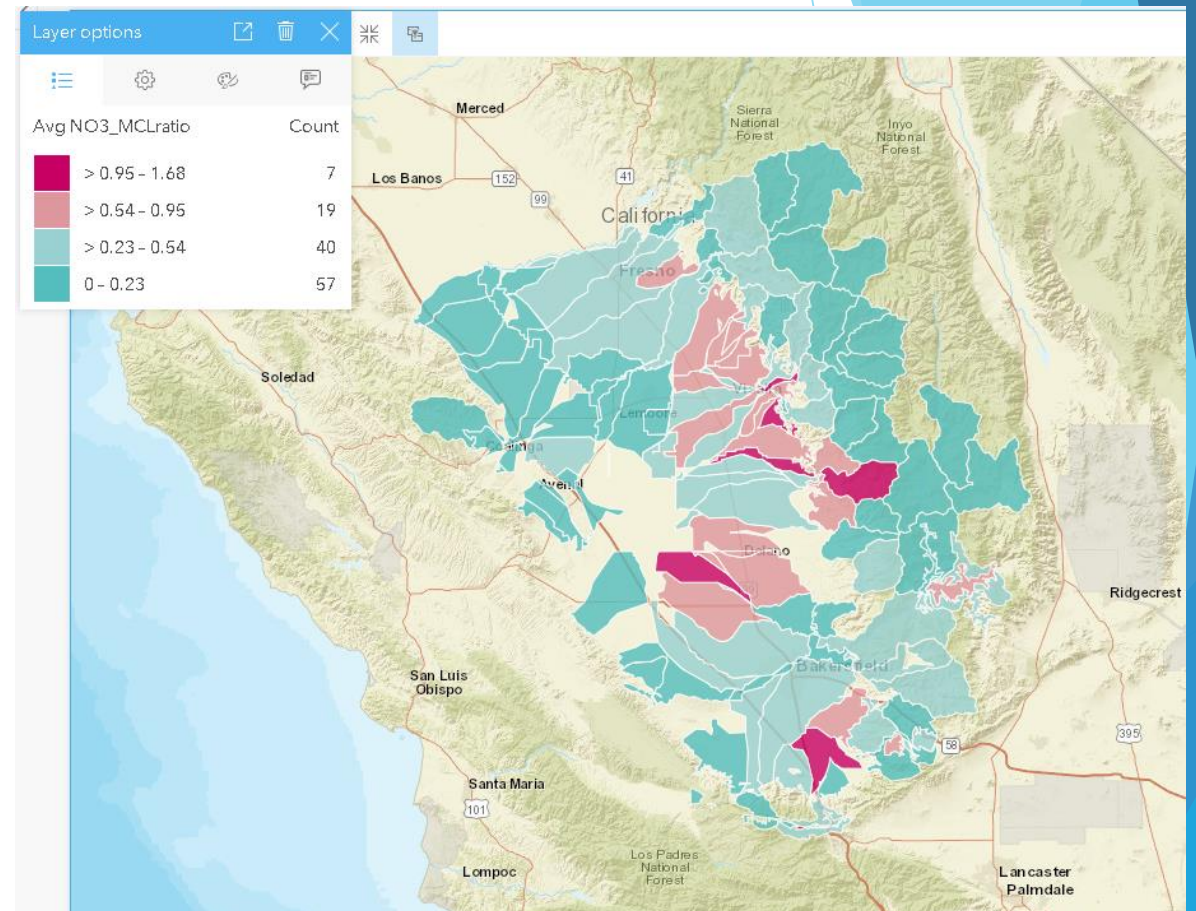
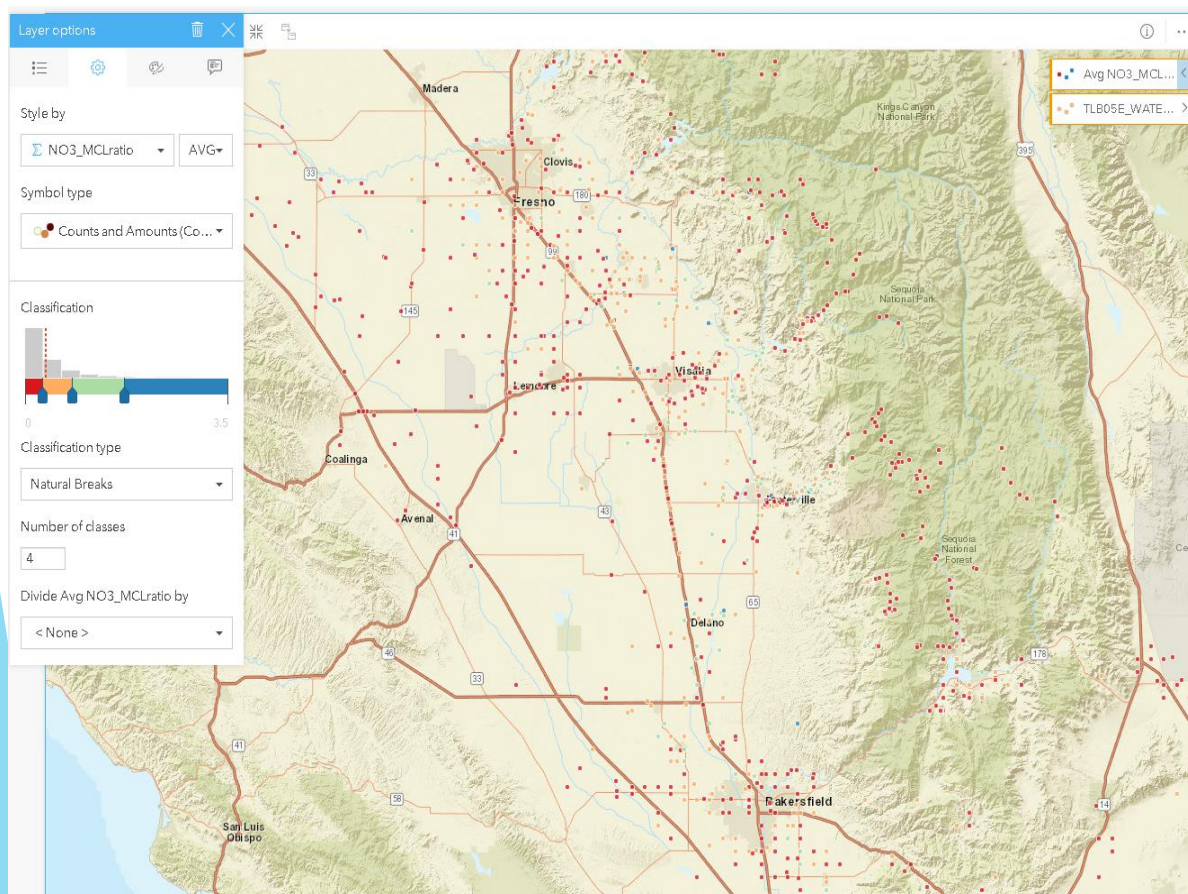
YearlyMCLRatio

DATE_Sample - Year	NO3_MCLratio	AVG
1978		0.1706
1980		0.2267
1981		0.2551
1982		0.2528
1983		0.1756
1984		0.4038
1985		0.2975
1986		0.3042
1987		0.3643
1988		0.3733
1989		0.3298
.....		.....
		Avg 0.5733

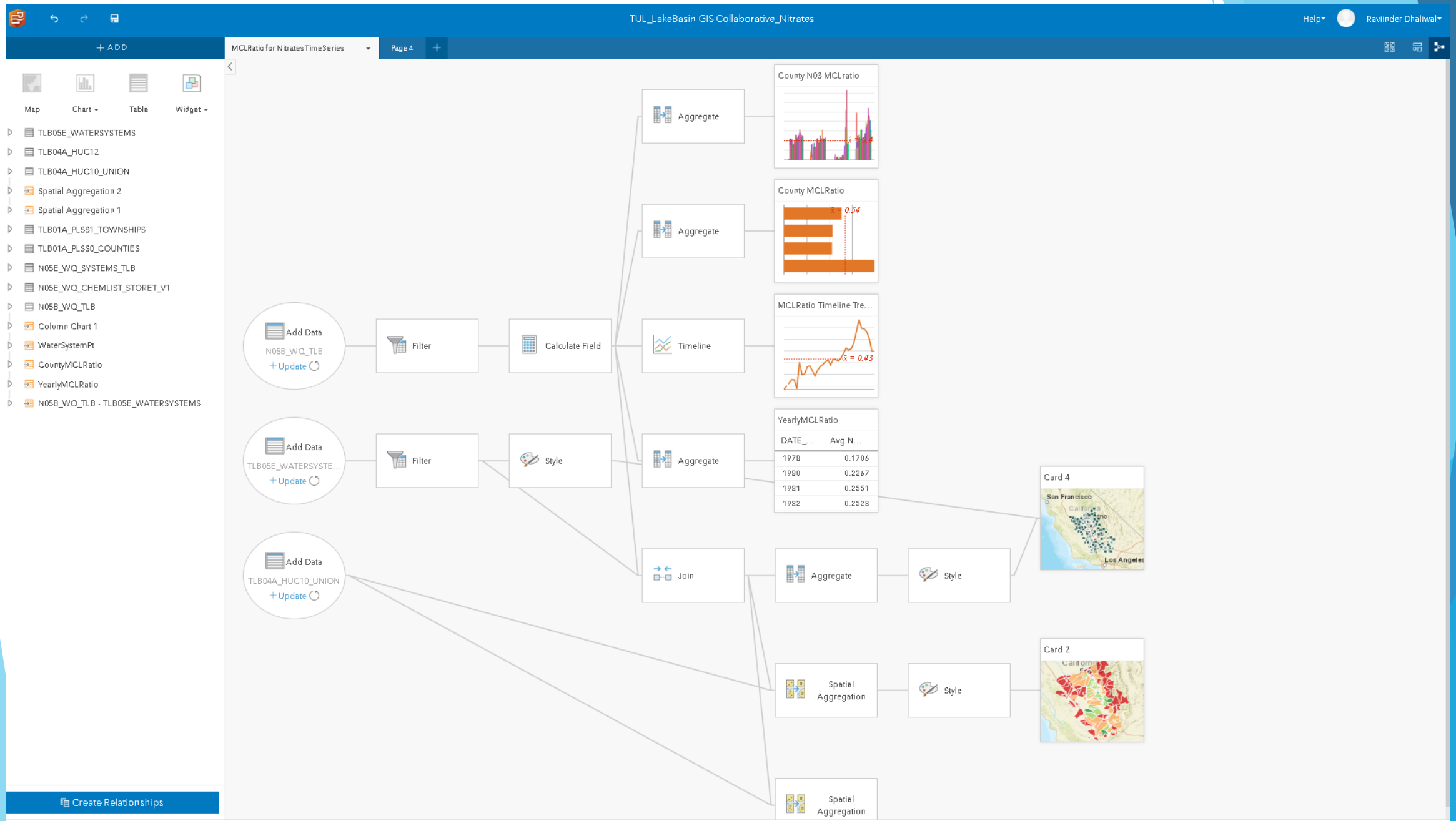




# Spatial Analysis



# Sharing your work (Datasets, Pages, Model, Workbooks!!)



***“You can have data without information, but you cannot have information without data.”***  
- Daniel Key Moran

**Thank you !!**

Ravi Dhaliwal  
Business Intelligence Analyst  
Tulare County IT  
[rdhaliwal@co.Tulare.ca.us](mailto:rdhaliwal@co.Tulare.ca.us)