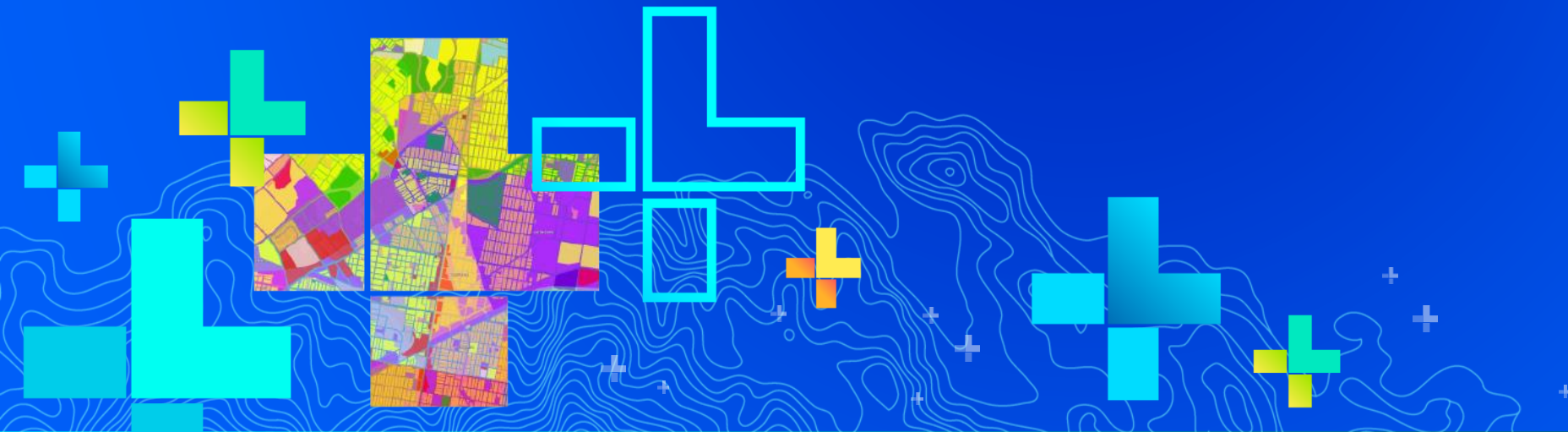


Ideas for Enabling Effective Local, Regional, and State-level NG9-1-1 Maintenance

Your Presenters:

Rodger Mann – NCT9-1-1

Jessica Beierman – GeoComm



9-1-1 GIS Data Goals

Accurate,
detailed location
information

Emergency
vehicle routing

Indoor building
information

PSAP map
display

Records
validation

9-1-1 call
routing

It's more than just GIS data! It's about "Saving Lives and Making A Difference."

9-1-1 GIS Data Goals

Accurate,
detailed location
information

Emergency
vehicle routing

Indoor building
information

PSAP map
display

Records
validation

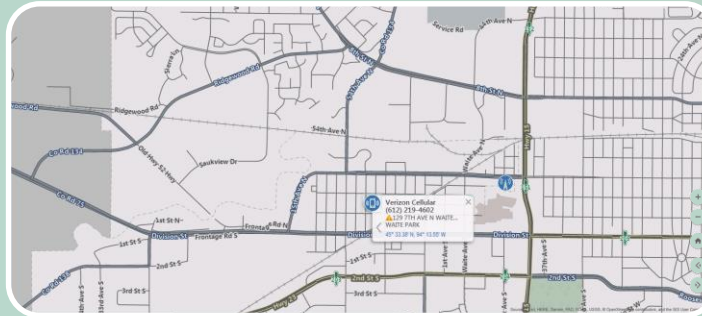
9-1-1 call
routing

It's more than just GIS data! It's about "Saving Lives and Making A Difference."

9-1-1 Caller Expectations



9-1-1 call taker
knows exactly
where I am

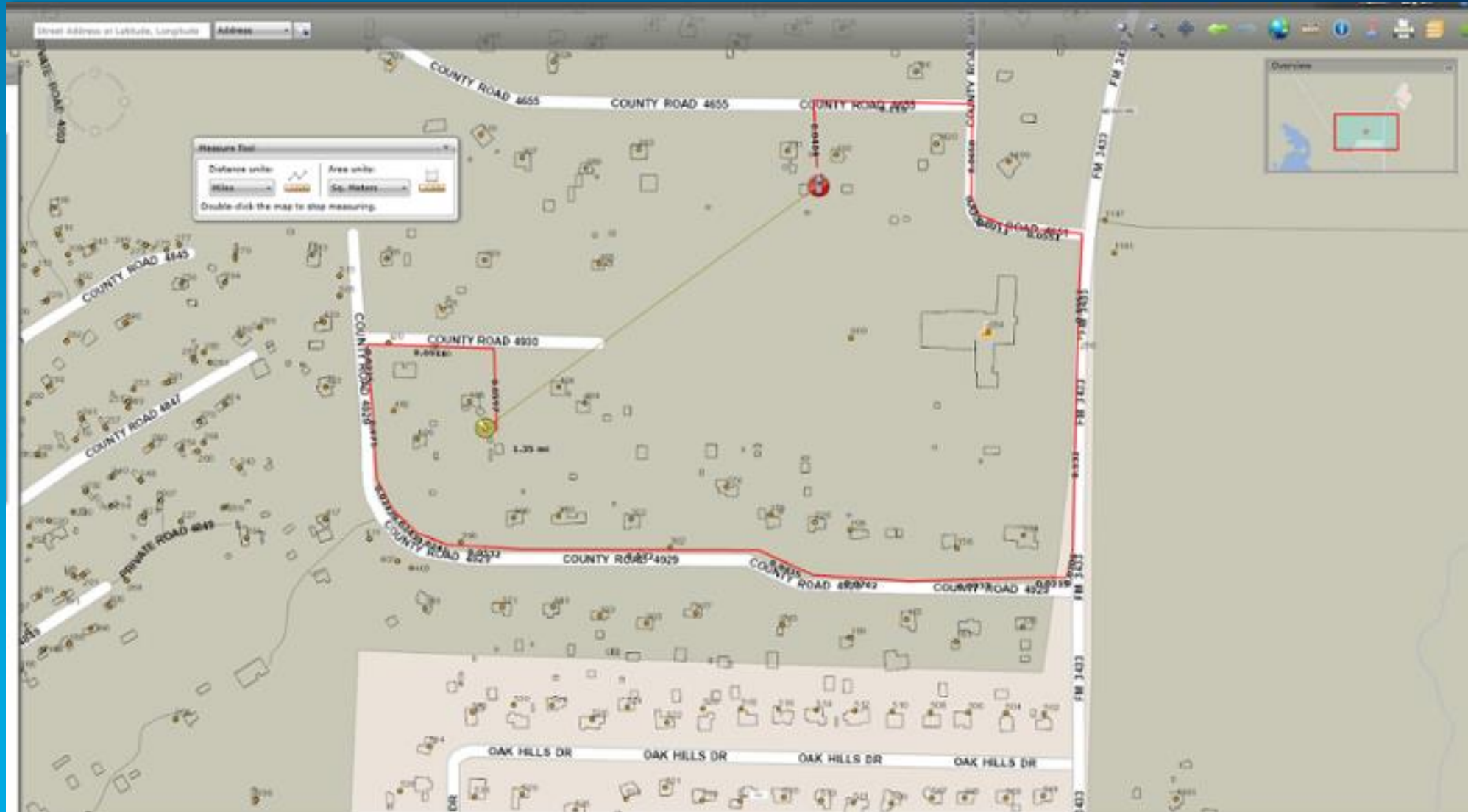


9-1-1 uses
consistent and
reliable
communications
systems



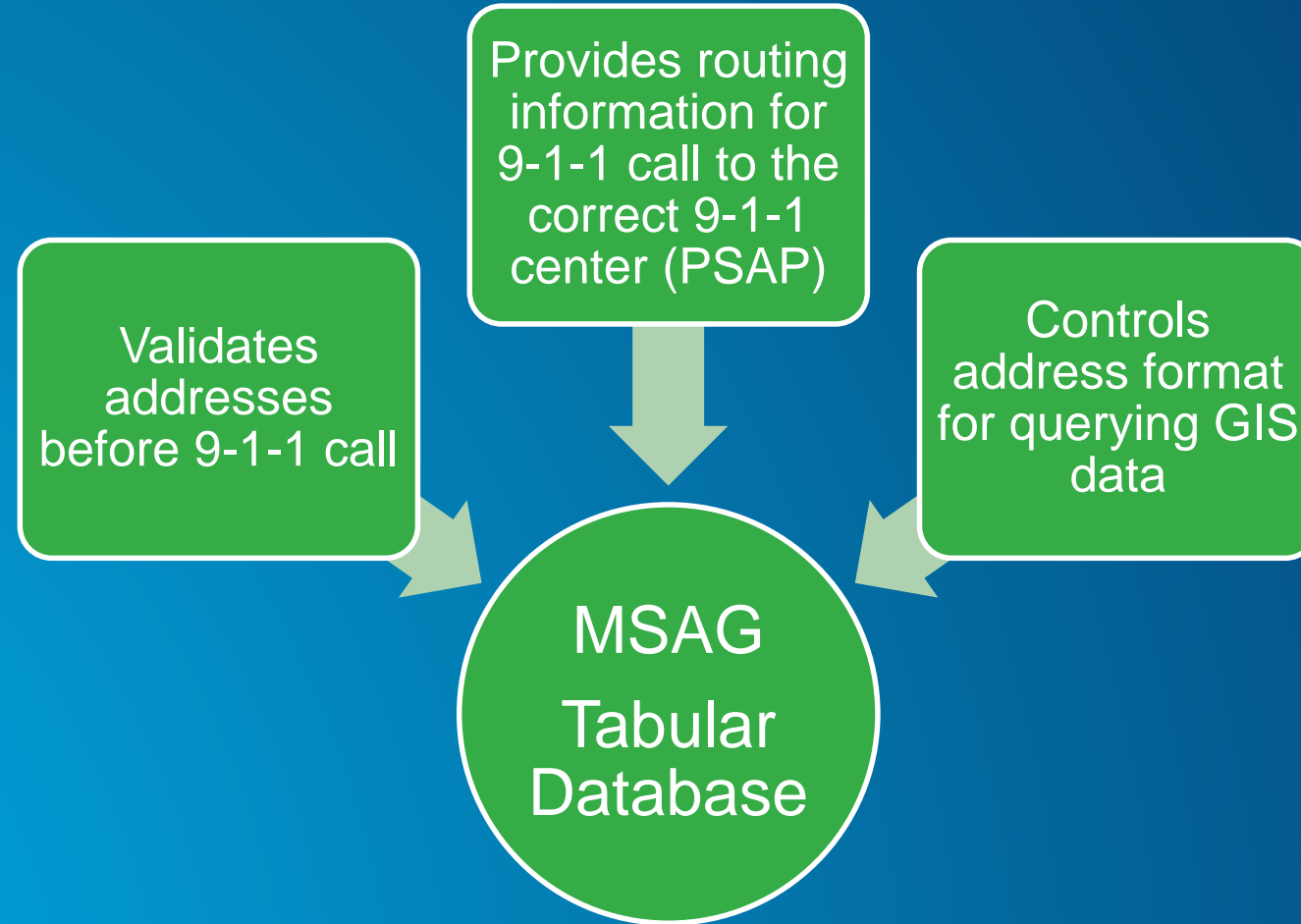
Help will arrive
quickly

Real-life Success Story



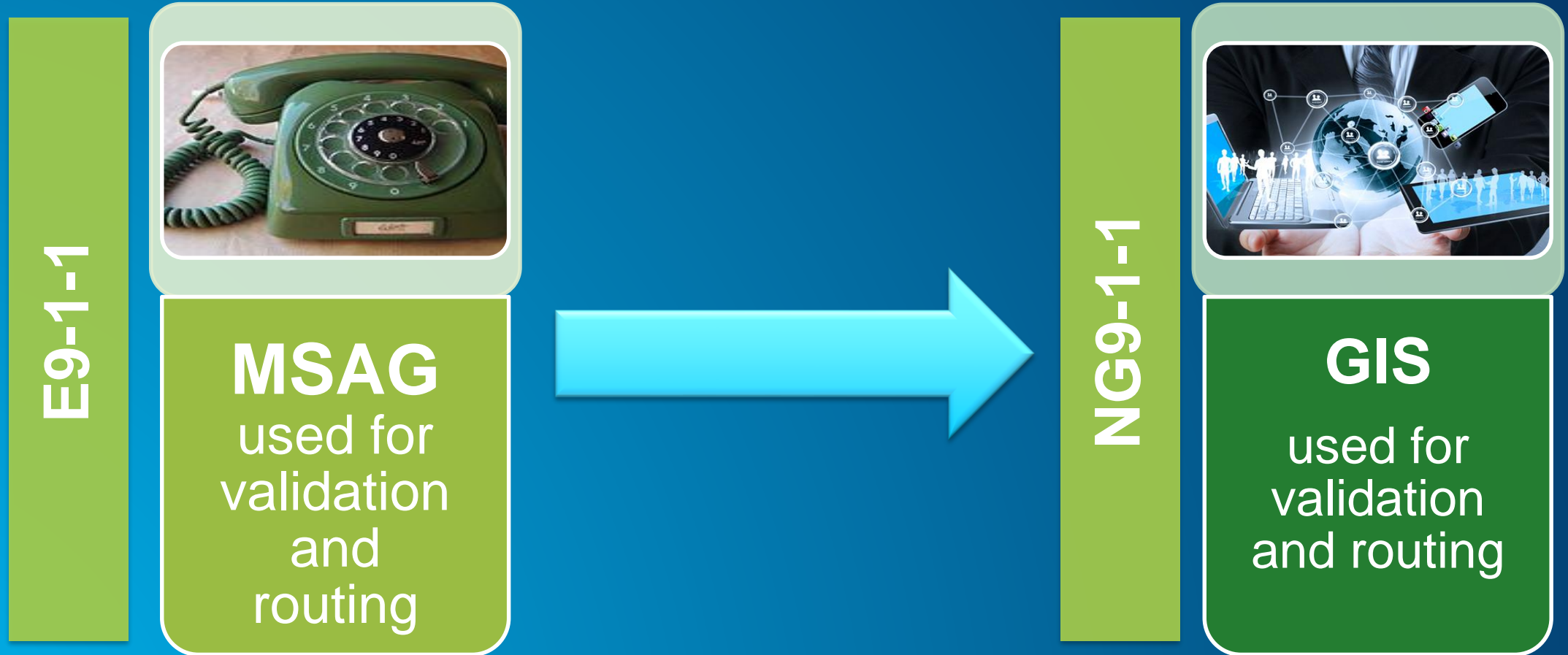
E9-1-1 Critical Database

MSAG (Master Street Address Guide)



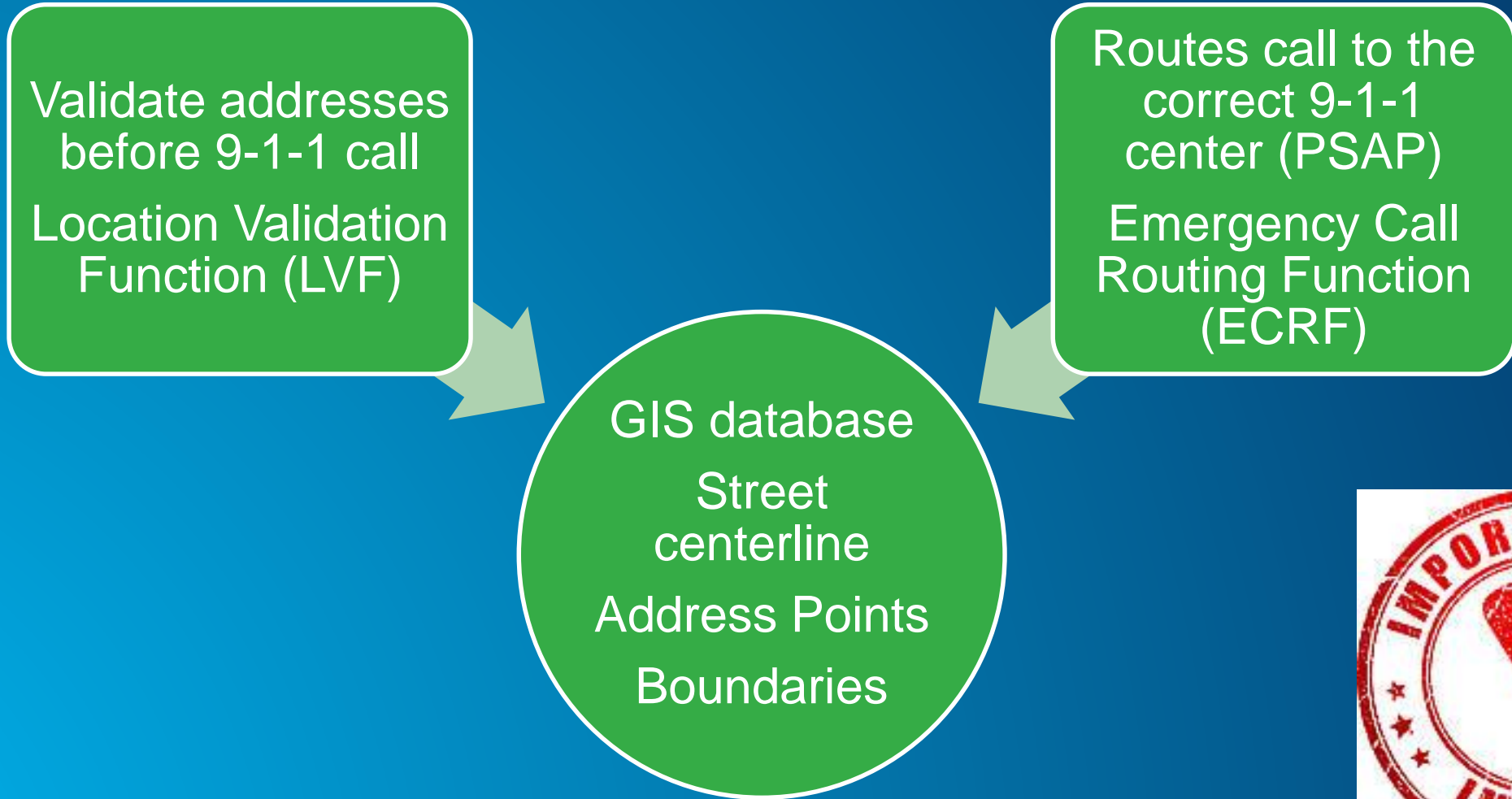
Maintained by **Public Safety*** *Housed with Telcos

NG9-1-1 Network Use for GIS Map Data.....



NG9-1-1 Critical Database

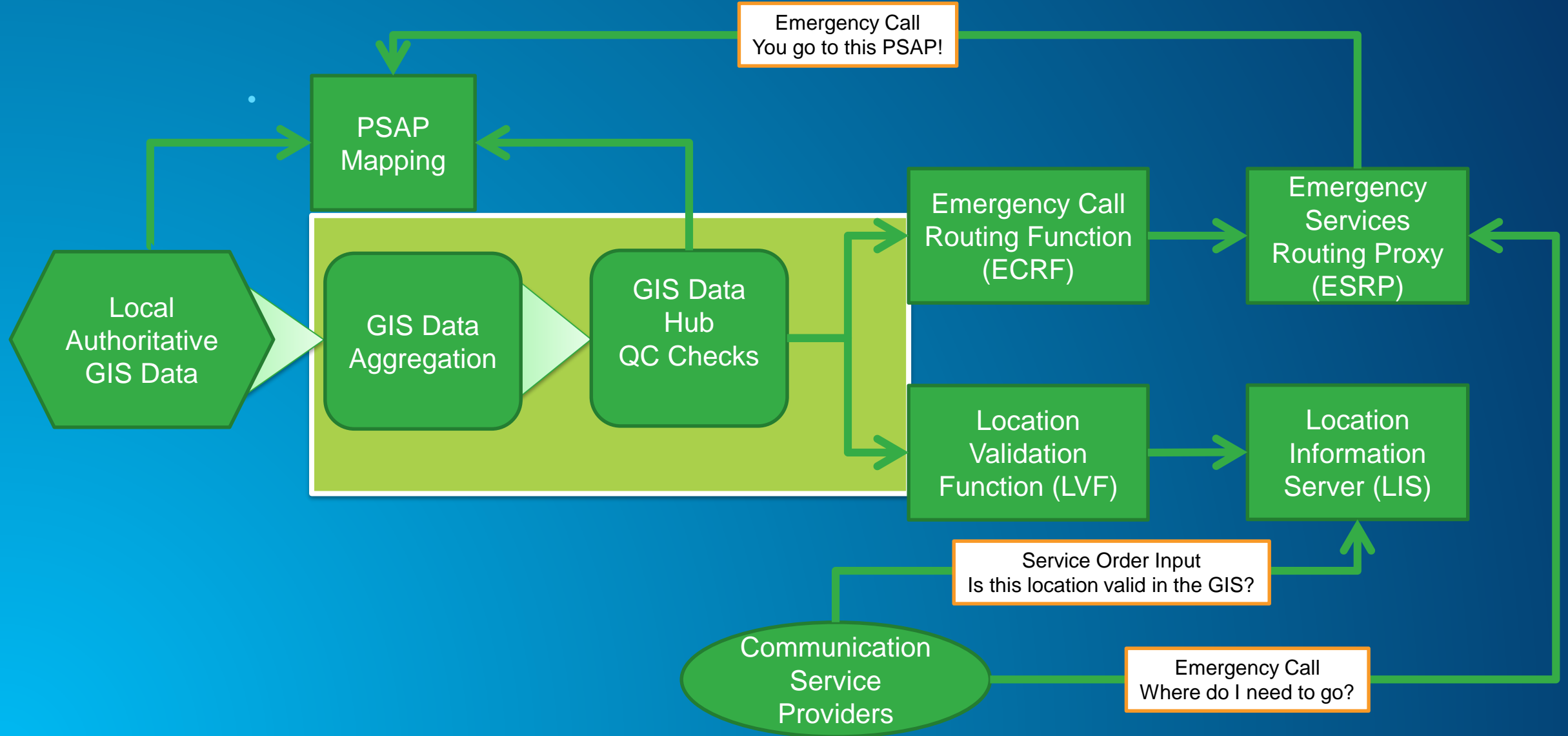
GIS Data



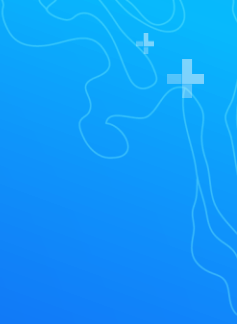
Maintained by **GIS department**



GIS Data Flow



The Stakeholders and Associated Challenges



Who is Involved?

9-1-1 Addressing Authorities (local, regional, state)

Regional 9-1-1 districts

Politicians and legislators

First Responders

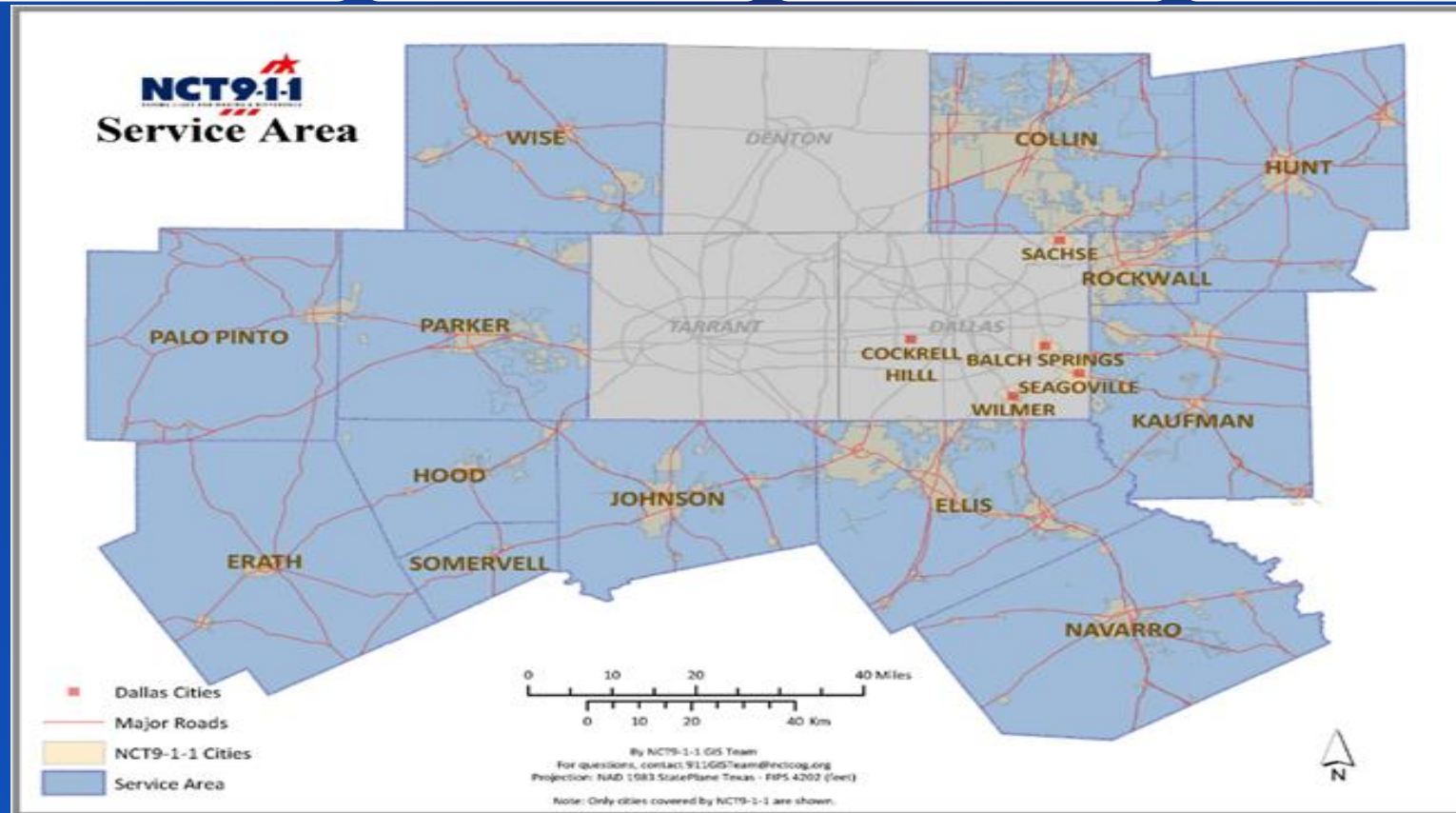
9-1-1 Telecommunicators

Public Safety vendors

Emergency callers

It's more than just GIS data! It's about "Saving Lives and Making A Difference"

NCT9-1-1 Region



Challenges for NCT9-1-1

Multiple Addressing Authorities

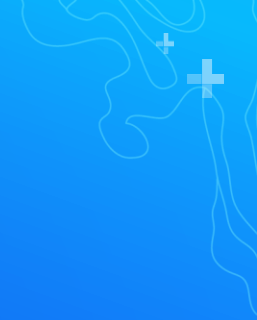
- Dissimilar addressing ordinances
- Disparate data schemas
- Varying levels of GIS knowledge

Employee turnover in local government

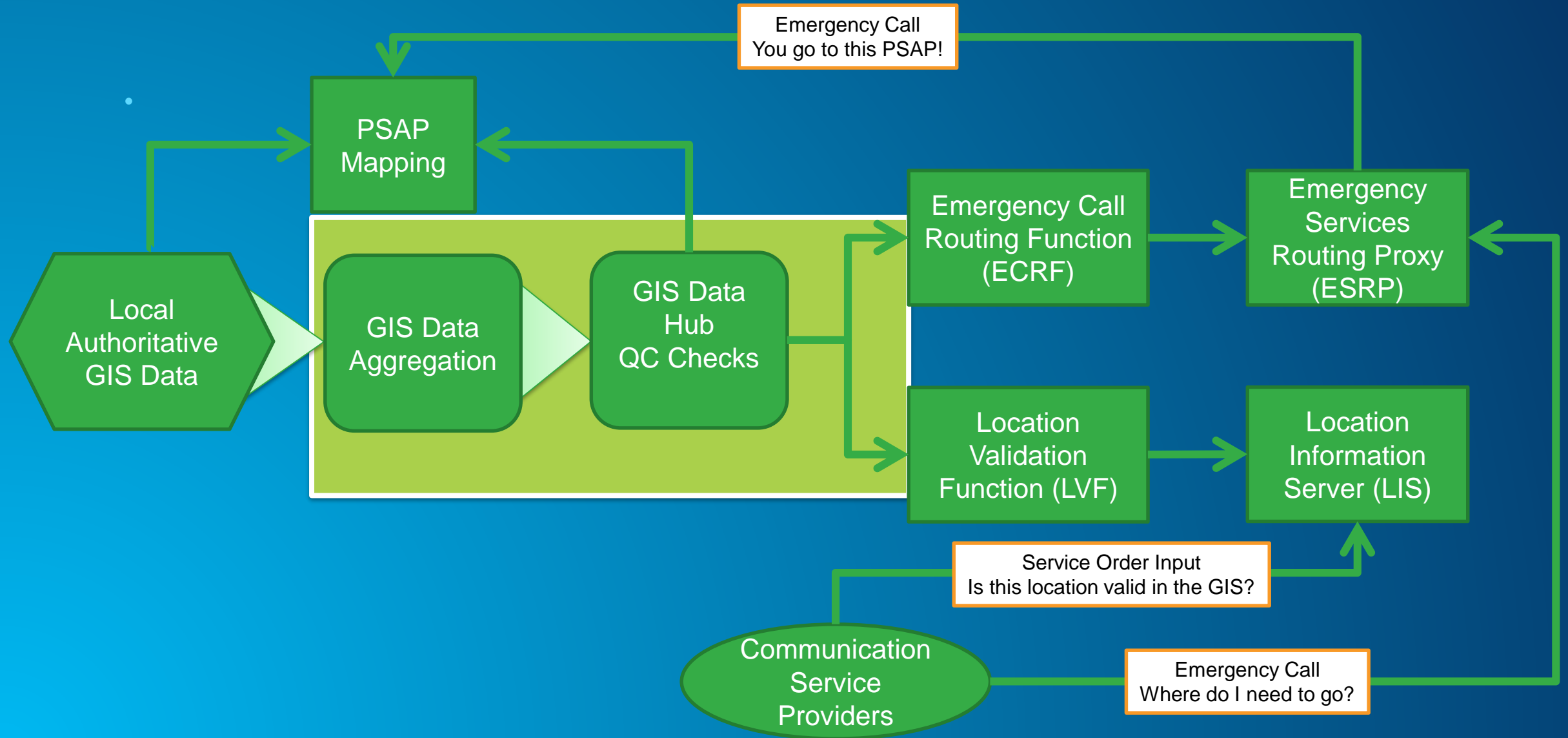
~500,000 GIS errors prior to NG9-1-1 implementation

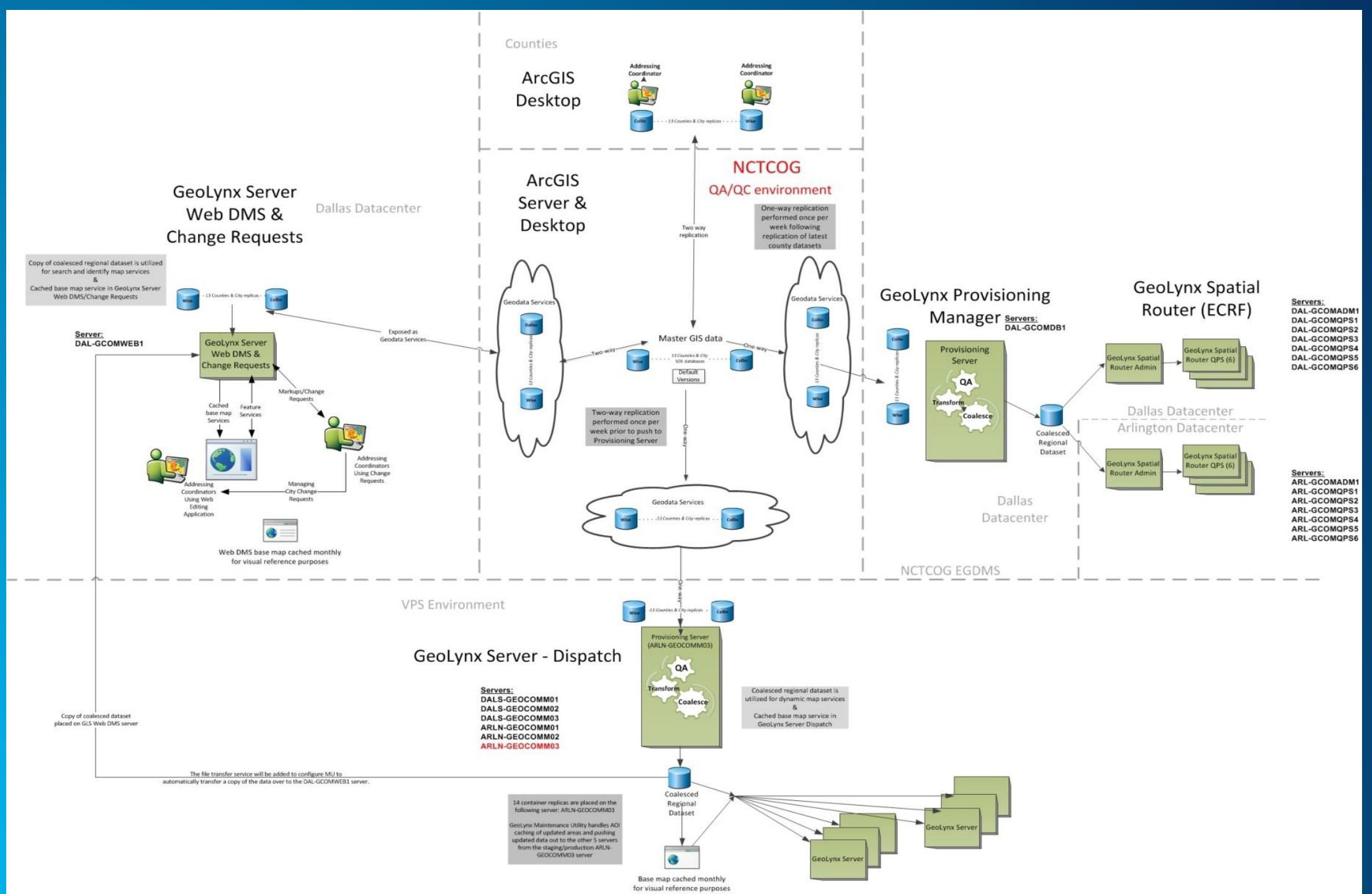
It's more than just GIS data! It's about "Saving Lives and Making A Difference."

The Tools

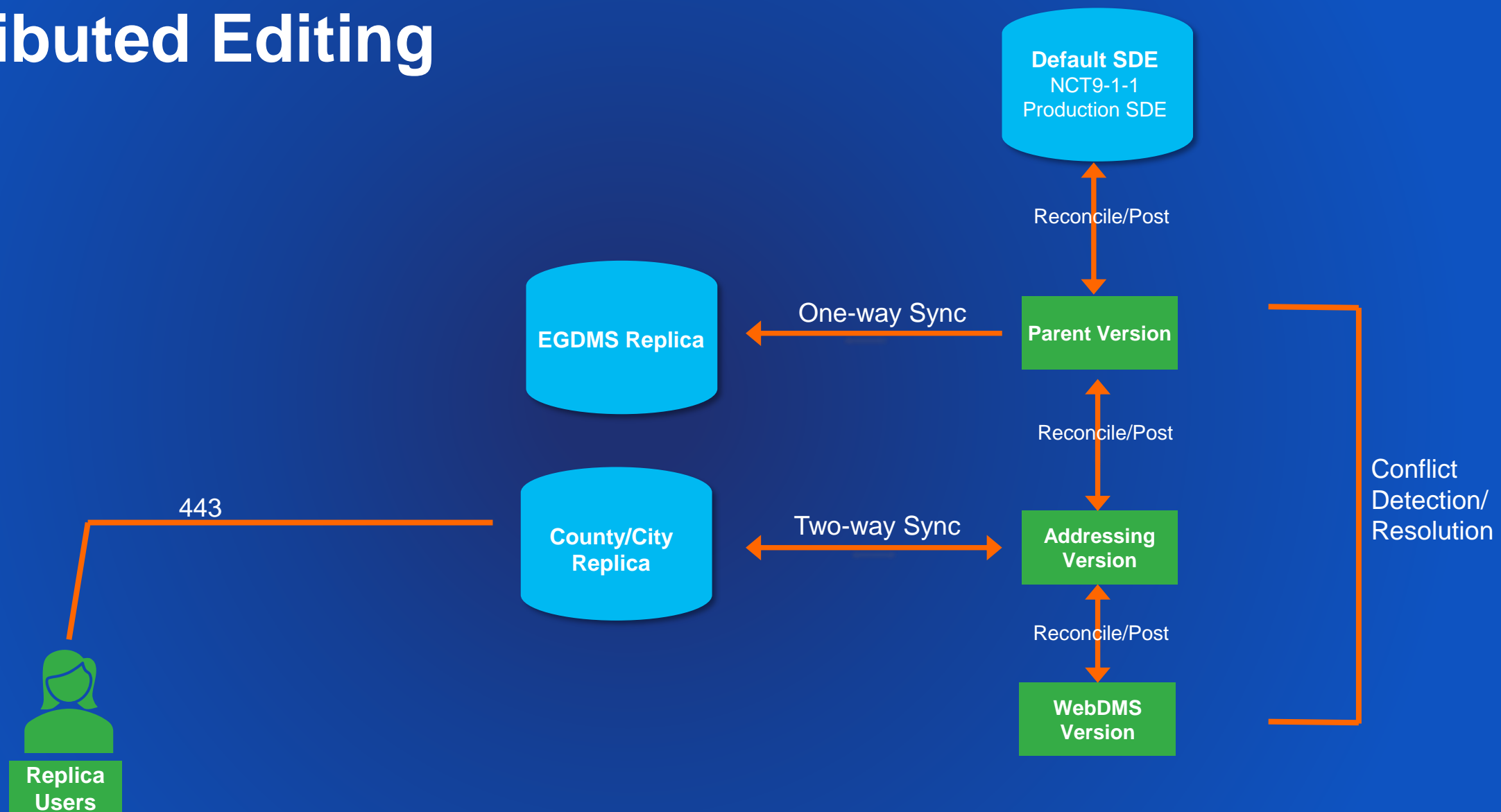


GIS Data Flow



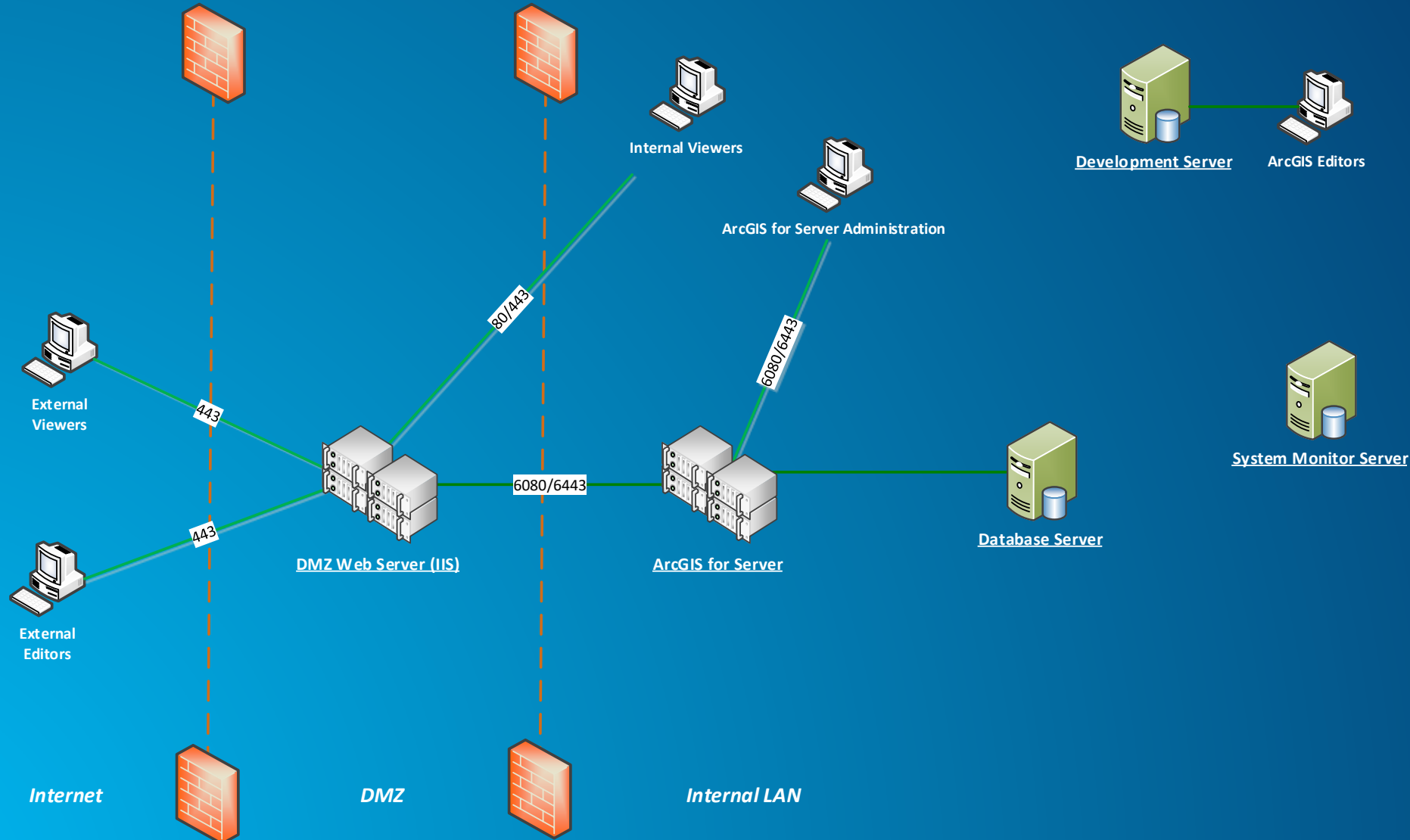


Distributed Editing



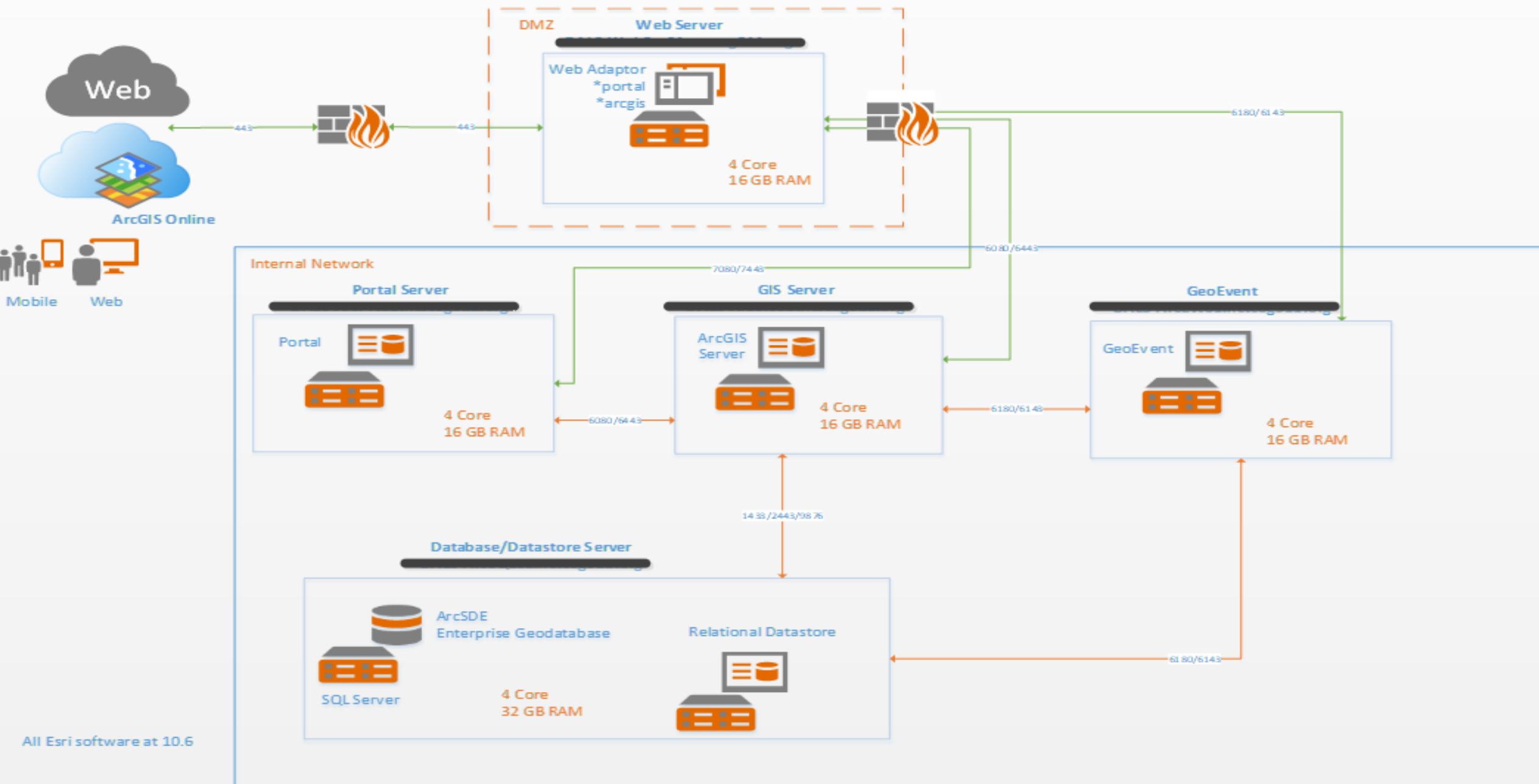
It's more than just GIS data! It's about "Saving Lives and Making A Difference."

NCTCOG 9-1-1 GIS: ArcGIS Platform

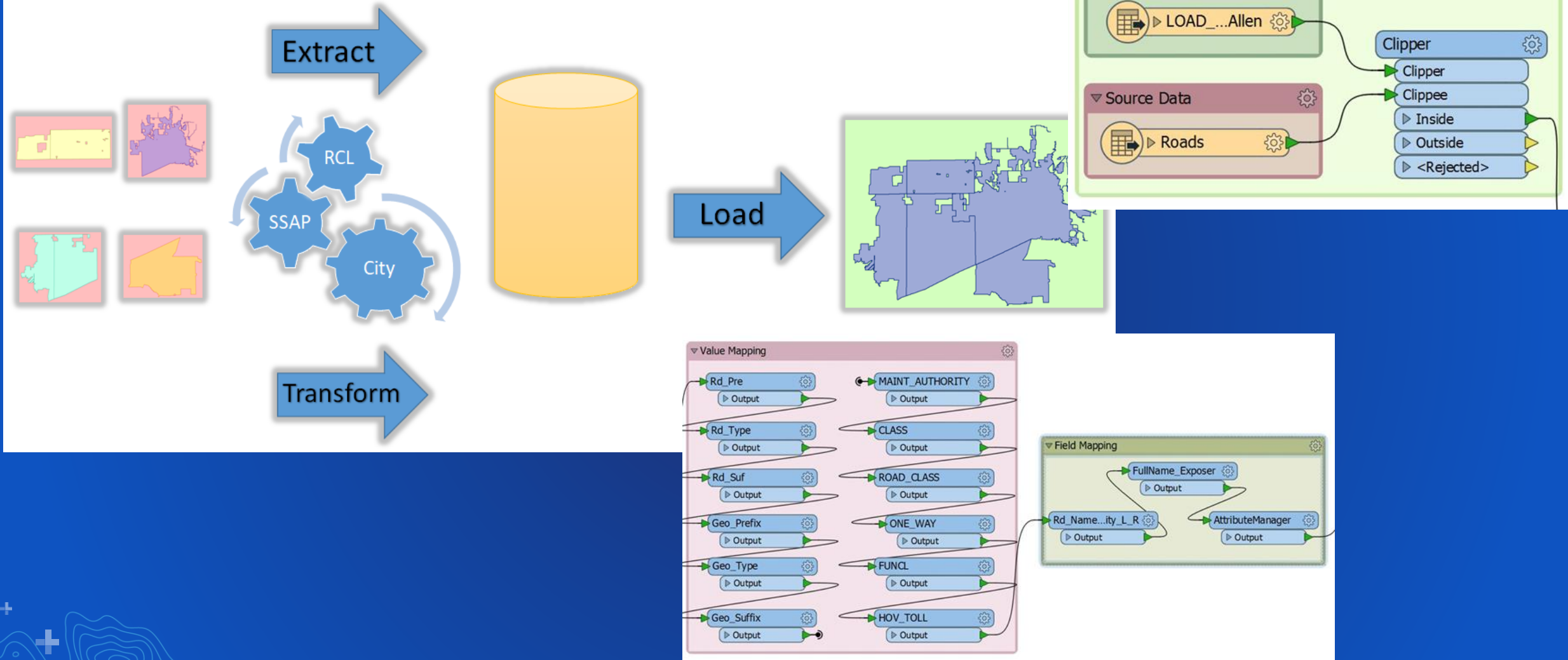


It's more than just GIS data! It's about "Saving Lives and Making A Difference."

NCT9-1-1 Esri Enterprise



Schemas – Extract Transform and Load (ETL)



It's more than just GIS data! It's about "Saving Lives and Making A Difference."

Automation

NCT9-1-1 Database Toolkit

Sync / Date Modified Critical Fields

Database to Check: Collin County Select Date: 6/24/2019 OK Cancel

Sync Info for All Two-Way Replicas Only:

Collin911 Addr 20180424
-- Sync Since Selected Date? **Yes**
-- Last Sync Start: **July 03, 2019 || 08:22:46 AM || Wednesday**
-- Last Sync End: **July 03, 2019 || 08:25:57 AM || Wednesday**
-- Last Sync Successful? **Yes**
-- Last Sync Completed In: **3 m, 11 s**

SS Collin
-- Sync Since Selected Date? **Yes**
-- Last Sync Start: **July 02, 2019 || 02:28:18 PM || Tuesday**
-- Last Sync End: **July 02, 2019 || 02:28:43 PM || Tuesday**
-- Last Sync Successful? **Yes**
-- Last Sync Completed In: **25 s**

Features that have been modified since selected date:

Address Points:	725	Medical:	25
City:	36	Mile Markers:	0
County:	0	MSAG Community:	35
ESZ:	75	PSAP:	24
Exchange:	34	QC Report:	1245
Fire Hydrants:	0	Replication:	0
Fire:	34	Roads:	269
Law:	37	Zip Code:	0

Custom scripts automate

- Database syncing
- Database health
- Web-services
- GIS Error Distribution

Send a customized email when a new SharePoint list item ✓ Create flow

When a new item is created ...

Using the default values for the parameters. Edit

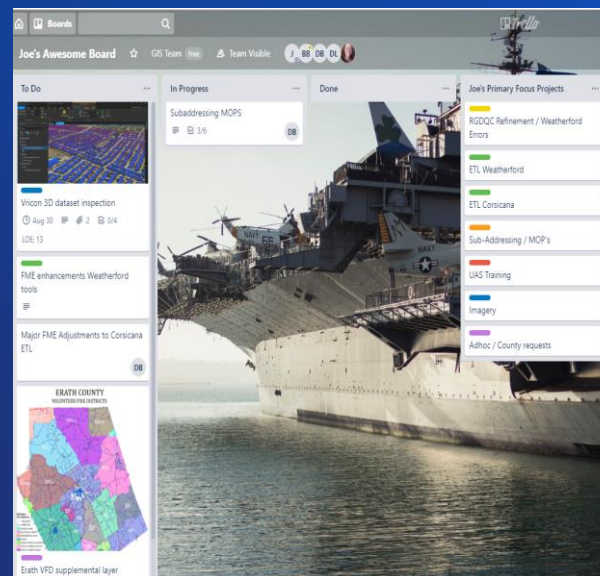
Get my profile ...

No additional information is needed for this step. You will be able to use the outputs in subsequent steps.

Send Email ...

Using the default values for the parameters. Edit

+ New step Save flow



Internal task tracking

- Agile
- Daily standups
- Collaborative boards
- Transparency

Collaborative tools

- SharePoint and flows
- Training portals
- Policies and processes

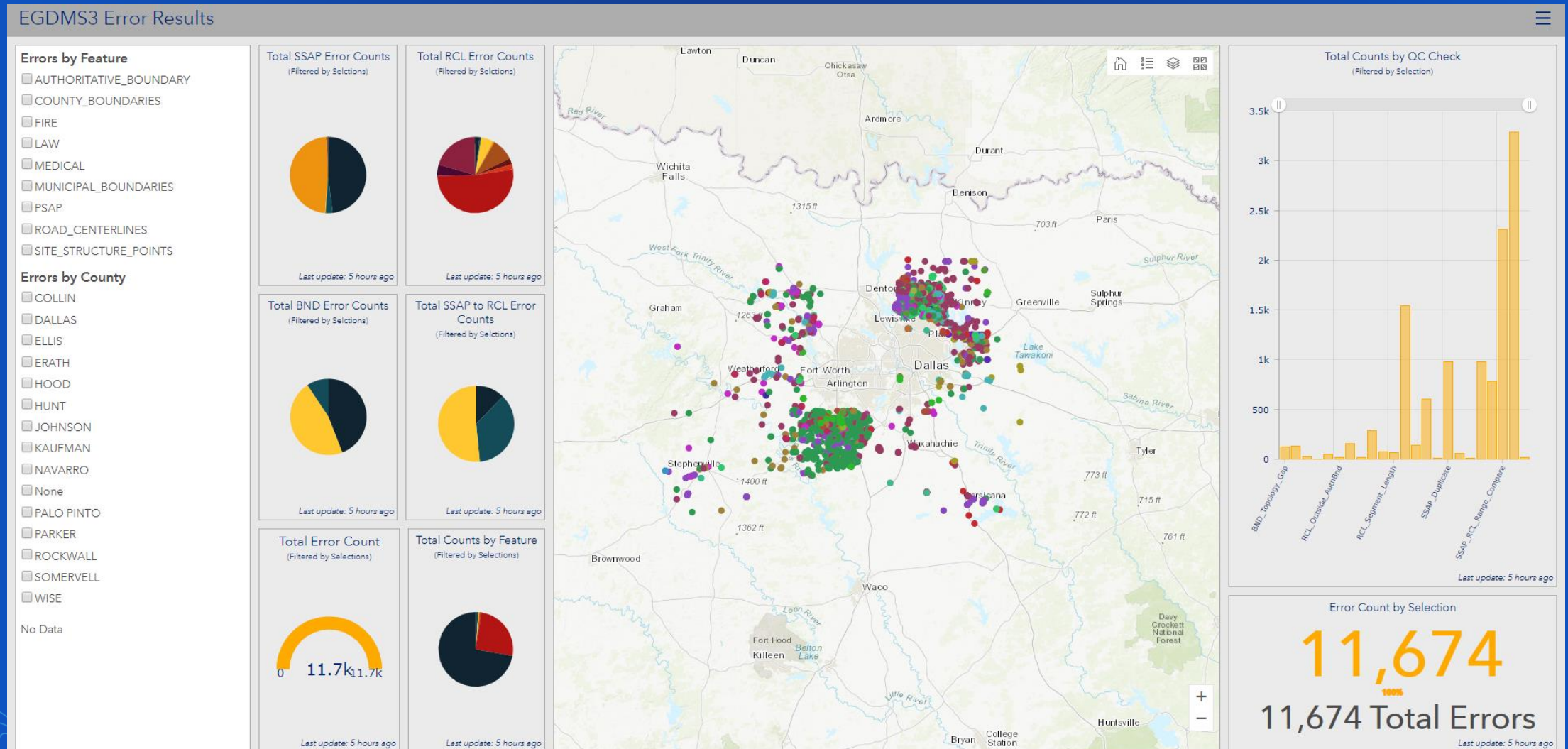
It's more than just GIS data! It's about "Saving Lives and Making A Difference."

Automation - Drones

- Improving addressing efficiency and accuracy
- Aiding first responders with more current imagery

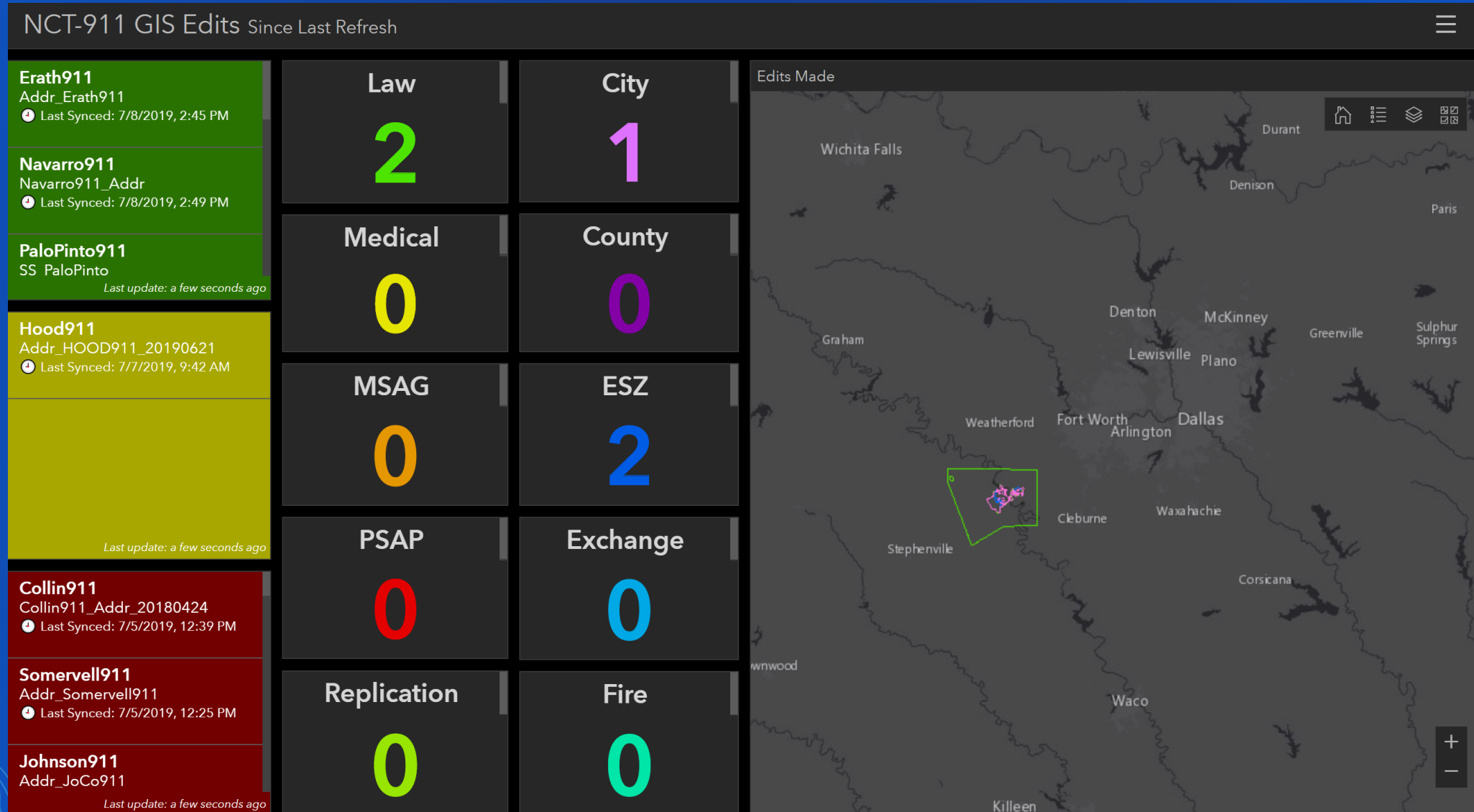


Dashboards



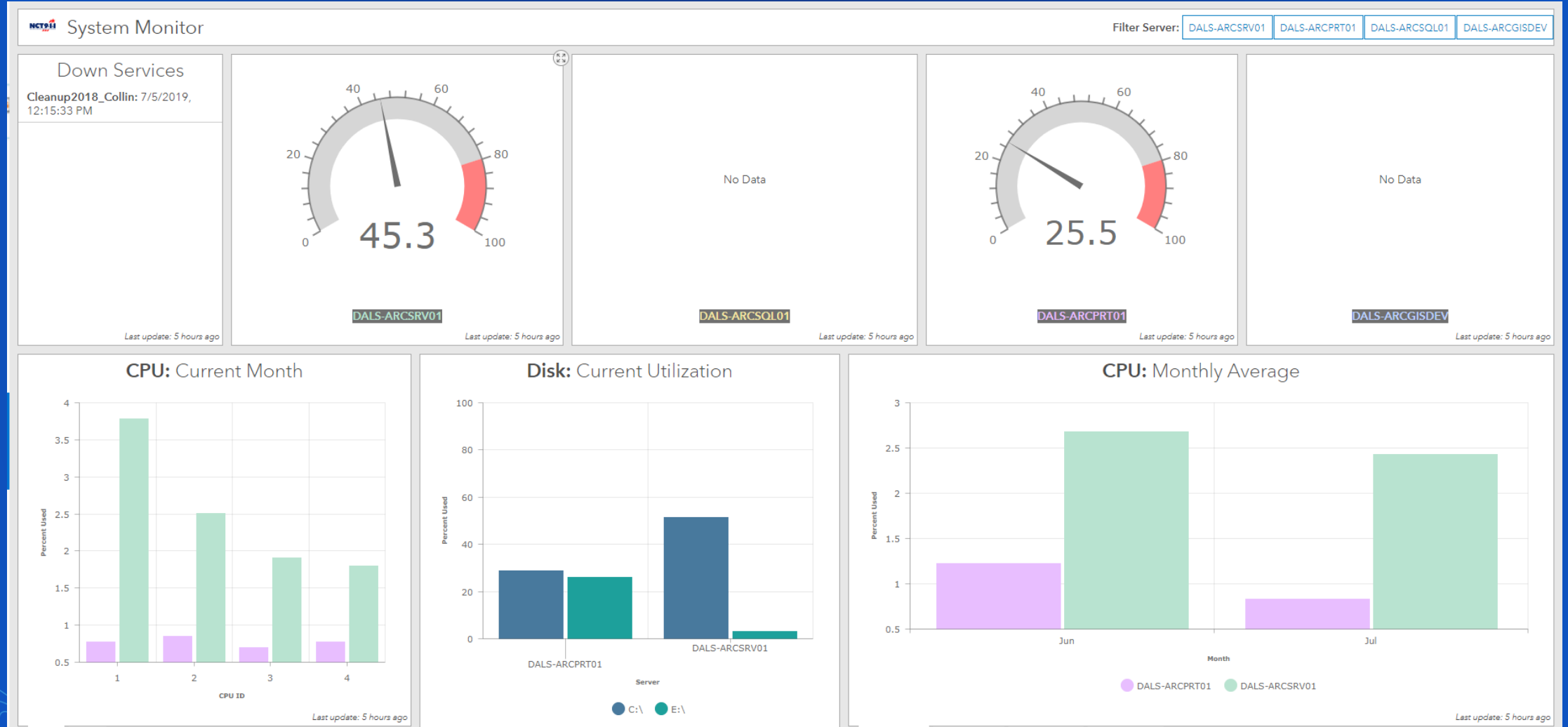
It's more than just GIS data! It's about "Saving Lives and Making A Difference."

Dashboards



It's more than just GIS data! It's about "Saving Lives and Making A Difference."

Dashboards



It's more than just GIS data! It's about "Saving Lives and Making A Difference."

The Processes



NCT9-1-1 Processes

Daily Replication and Quality Control

GIS Updates to Public Safety Applications


- Vector data every 72 hours
- Aerials every 30-60 days

Standard Operating Procedures

Methods of Procedures

It's more than just GIS data! It's about "Saving Lives and Making A Difference."

SOPs and MOPs



Collin County Processes for 9-1-1 Addressing and Database Maintenance

Introduction

Next Generation 9-1-1 (NG911) uses data within a Geographic Information System (GIS) to route 9-1-1 calls to the correct Public Safety Answering Point (PSAP) or dispatch office. An accurate and up to date GIS will ensure responders will reach 9-1-1 callers in optimal time. The North Central Texas Council of Governments (NCTCOG), administers the systems and GIS data used to route emergency calls to the correct PSAP, as well as plot the caller(s) location. This GIS data is maintained at the local government level and transferred to NCTCOG via web-based technology. The transfer of GIS data from the local government entities is key to making NG9-1-1 a success. Currently, at the core of this workflow is the County Addressing Coordinator.

The County Addressing Coordinator is responsible for 9-1-1 Addressing. 9-1-1 Addressing involves the creation and maintenance of the following:

- Addresses
- Roads
- Jurisdictional boundaries
- MSAG and ALI databases

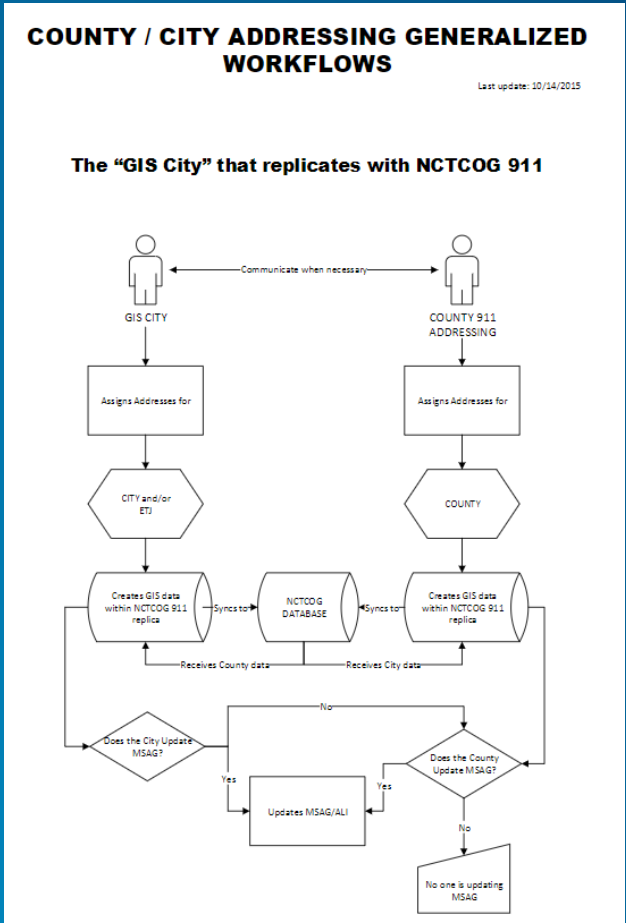
Within the NCTCOG region there are 13 County Addressing Coordinators. Historically, addressing standards and procedures for completing 9-1-1 Addressing related tasks have been created on a county by county basis. Many of these procedures are similar due to requirements of subdivisions and building permits; however, numbering and naming conventions as well as how changes are handled vary.


For this reason, the purpose of this document is to be a regional guide of county-specific step by step processes used for completing 9-1-1 Addressing and includes links to any county documented addressing standards or forms. Please note this is a "living" document and by no means should be considered a replacement for individual policies and processes.

**NCTCOG would appreciate updates of processes and policies as well as input on what county procedures should be documented.*

QUICK LINKS

- [Table of Contents](#) 1
- [Introduction](#) 2
- [Address Processes](#) 3
- [Overview](#) 3
- [Address Procedures](#) 6
- [Road Procedures](#) 13
- [Boundary Procedures](#) 21
- [Verification](#) 23
- [City Procedures](#) 25
- [Appendix A](#) 33
- [Collin County](#) 33
- [Appendix B](#) 37
- [Appendix C](#) 52





Splitting Roads

Implementation Date:	8/31/2015
Last Reviewed/Update:	8/31/2015
Contact: : NCTCOG 9-1-1 GIS	911GISTeam@nctcog.org

Overview

Purpose
Roads within the North Central Council of Governments 9-1-1 GIS database must be split when they cross certain features. This document provides step by step examples of the more common types of splits.

Requirements

- ESRI ArcGIS 10.0 or higher
- Computer system with the minimum requirements to run ArcGIS
- Access to NCTCOG 911 GIS database

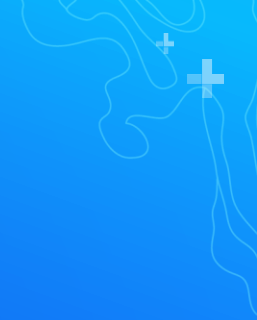
**Note: Some examples are taken from the actual NCTCOG database maintained by local authorities. If an edit is shown to be made on the data, do not be alarmed. Edits are not saved. Also, corrections made to data do not necessarily imply corrections are needed. NCTCOG may not be aware of all factors or resources.*

Getting Started

When you open your ArcMap document, make sure that the NCTCOG ROADS data layer for your county is currently within your *Table of Contents*.

It's more than just GIS data! It's about "Saving Lives and Making A Difference."

Conclusion

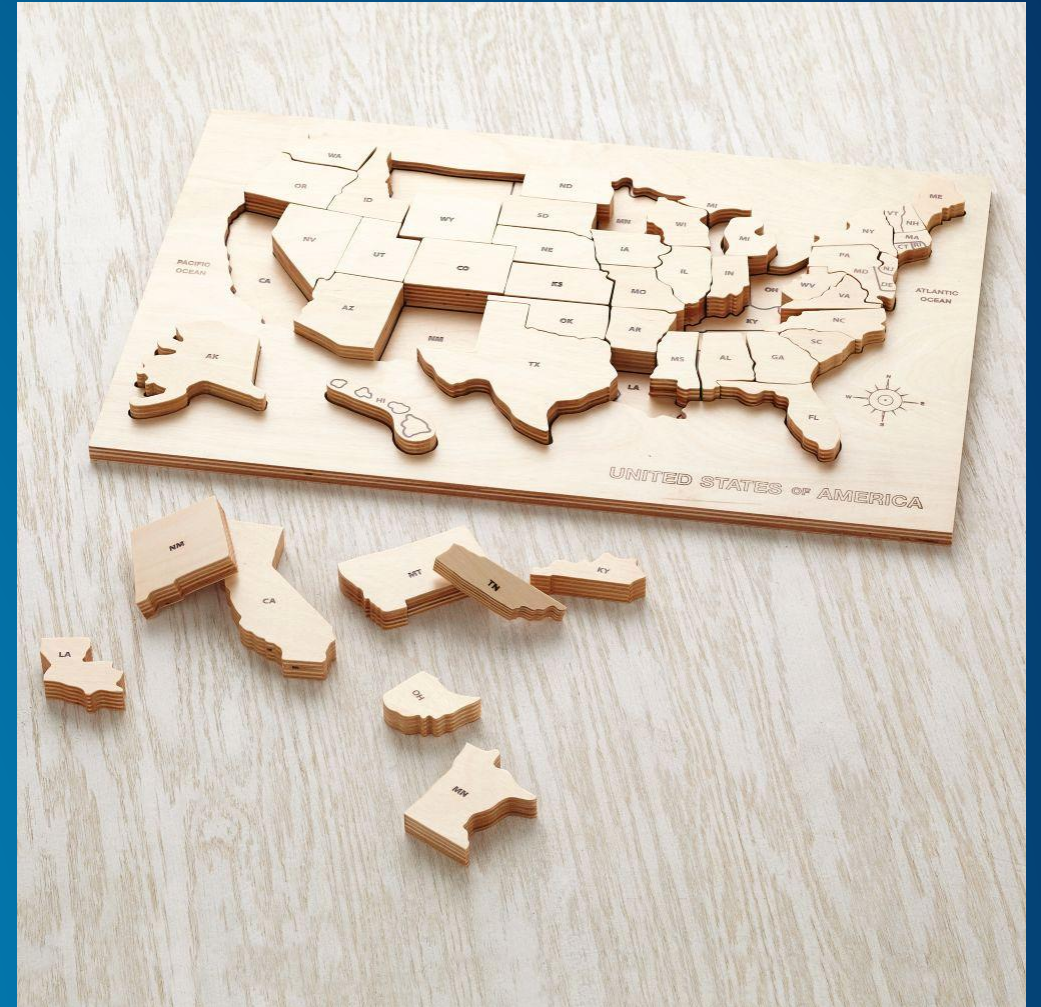


Standardized Data – Fitting it all Together

If YOU build your data to the standard...

and your NEIGHBOR builds their data to the standard...

and THEIR neighbor builds their data to the standard...



Common Challenges

GIS may not be public safety grade – conflicting purposes

Meeting and understanding NENA requirements

Inconsistent GIS data management processes and data

GIS staff

- Short-handed
- Concern to take on public safety responsibility
- Other priorities



Benefits of Going Through this Effort

Preparing GIS data for NG9-1-1

Complying with nationally-recognized public safety standards and best practices

Improving GIS data quality

Supporting mission critical 9-1-1 environments and accurate location information

Save lives!



Road Map

Identify stakeholders

Present goals and collaboration needs

Develop workflows (diagrams & MOPs)

Establishing efficient, consistent GIS data processes,
including regular communication

Provide feedback and incentives on GIS QC results
for continuous improvement and maintenance

Thank you!

Rodger Mann – rmann@nct911.org

Jessica Beierman – jbeierman@geo-comm.com