

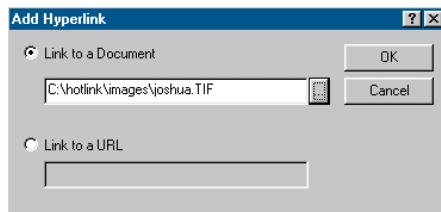
Access Images, Documents, and Web Sites from ArcMap

By Monica Pratt, ArcUser Editor

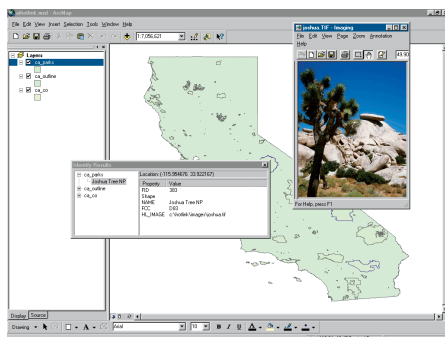
Functionality built into ArcMap gives you a more powerful way to communicate information with maps. Linking map features with documents, such as images and Web pages, helps organize and reference related information. ArcMap, one of the three desktop applications released with ArcInfo 8, can access files created in many different types of non-GIS applications using hyperlinks.

Hyperlinks are quickly and easily created in ArcMap. This brief tutorial explains how to link map features in ArcMap to files created in other applications without any programming. The sample data used with the “Hot Linking with ArcView GIS” tutorial that appeared in the January–March 2001 issue of *ArcUser* will be used with this exercise. This data set is available from the *ArcUser Online* Web site in two locations—with the original ArcView GIS article and with the online version of this article.

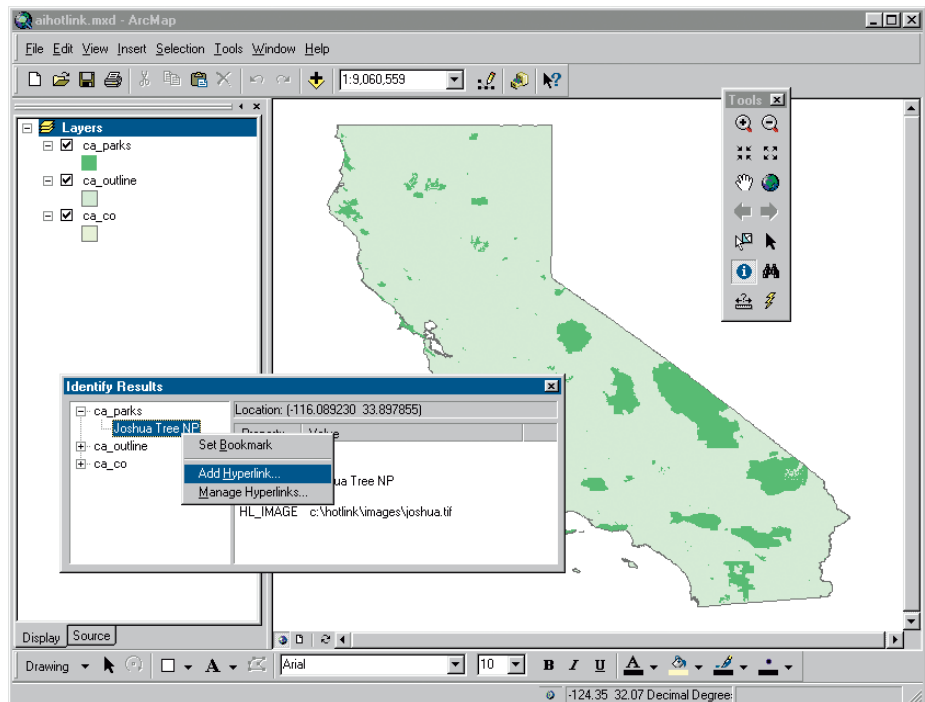
If you have already done the ArcView GIS hot linking tutorial, you can use the same files and directory structure. If you have not done that tutorial or have deleted the source files, download the self-extracting zipped file and use Windows Explorer to create a directory at or near the root directory called hotlink. Create two folders under this directory called



In the Add Hyperlink dialog box, click on Link to a Document and browse to the location of Joshua.tif.



Clicking on the Joshua Tree Park polygon with the Hyperlink tool causes the linked image, joshua.tif, to appear in a separate window.



Click on the Joshua Tree NP polygon in the View with the Identify tool. Right-click on Joshua Tree NP in the Identify Results box.

shpfiles and images. Place the ca_parks and ca_outline shapefiles into the shpfiles folder. Place the three image files, death.tif, joshua.tif, and yosemite.zip, in the images folder.

Linking to an Image

1. Start an ArcMap session. Click on the Create a New Map radio button then the Start using ArcMap button.
2. Add the ca_parks and ca_outline shapefiles to the map as layers by choosing File > Add Data or by clicking on the Add Data button on the Standard toolbar.
3. Make sure the Tools toolbar is available. If not, choose View > Toolbars and toggle it on.
4. Choose the Identify tool from the Tools toolbar. This tool has an icon showing an “i” inside a circle.
5. Use the Identify tool to click on the polygon for Joshua Tree National Park. This feature, identified as “Joshua Tree NP” will be visible under the ca_parks layer in the Identify Results dialog box.
6. Right-click on Joshua Tree NP in the Identify Results dialog box and choose Add Hyperlink from the context menu.
7. In the Add Hyperlink dialog box, click on Link to a Document and click on the button showing the ellipse (...). Navigate to the location of Joshua.tif in the images

folder you created. Click on joshua.tif. Click OK to close the dialog.

8. To use the hyperlink, click on the Hyperlink tool. This tool has a lightning bolt icon. Use the Hyperlink tool to click on the Joshua Tree Park polygon. The linked image, joshua.tif, will appear in a separate window in the paint application specified for the computer.

Linking to a Web Site

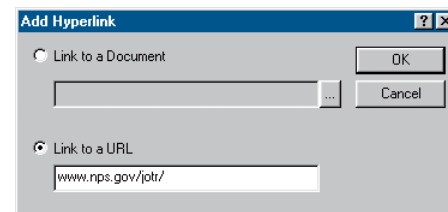
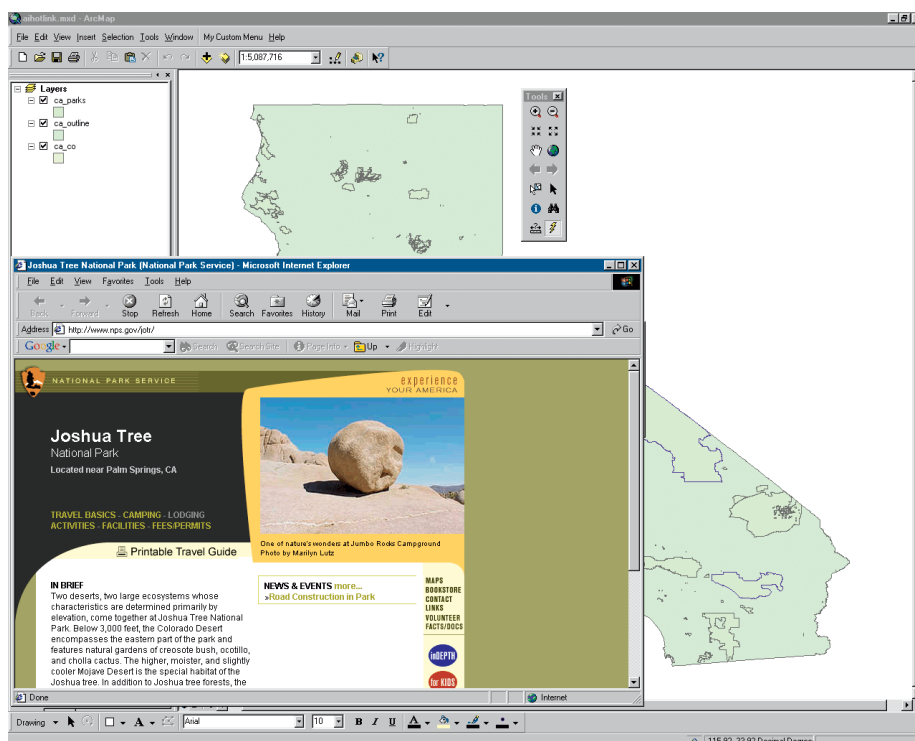
ArcMap can manage multiple links from the same feature to various types of documents. This means a link to the National Park Service Joshua Tree National Park site can be added without removing the link to the image, joshua.tif.

1. Choose the Identify tool again. Click on the polygon for Joshua Tree National Park.
2. Right-click on Joshua Tree NP and choose Add Hyperlink from the context menu.
3. In the Add Hyperlink dialog box, click on Link to a URL. Insert the desired URL in this text box by typing it or copying it from the browser address window to the Windows clipboard and pasting it. The URL for the Joshua Tree National Park site is <http://www.nps.gov/jotr/>. Click OK to close the dialog.
4. Test the hyperlink by clicking on the Joshua Tree Park polygon. Because there are

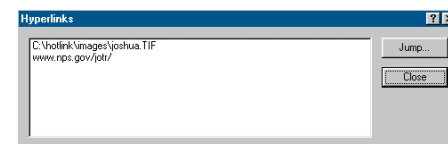
What You Will Need

- ArcInfo 8 or ArcGIS 8.1
- An Internet connection

After a hyperlinked URL is selected, the default browser will start and display the page specified.



The same Add Hyperlink dialog box can be used to link a feature to a Web site.



ArcMap can link multiple images and URLs to a single feature.

multiple links for this feature, the Hyperlinks dialog box appears. Select the URL for the Web page and click on the Jump button. The default browser will start and jump to the page.

Note that images and other linked documents do not open in ArcMap. These documents will open in a program associated on that computer with the file format. Consequently, the TIFF images of parks in this exercise will open in a paint program. This also means that, unlike ArcView GIS, no special scripting is needed to view documents in other applications such as Microsoft Word. Simply hyperlink to the document using the same method described for linking to an image. Choosing Manage Hyperlinks from the same context menu used to add a hyperlink will invoke the Dynamic Hyperlinks dialog box that lets you edit the hyperlinks for a feature.

Hyperlinking is just one example of the many ways the tools in ArcMap let you integrate data and automate tasks. For more information on using ArcMap, read *Getting to Know ArcGIS Desktop*, a new workbook published by ESRI Press. It is available online from the GIS Store at www.esri.com/gisstore or by calling 1-800-477-9778. **AU**