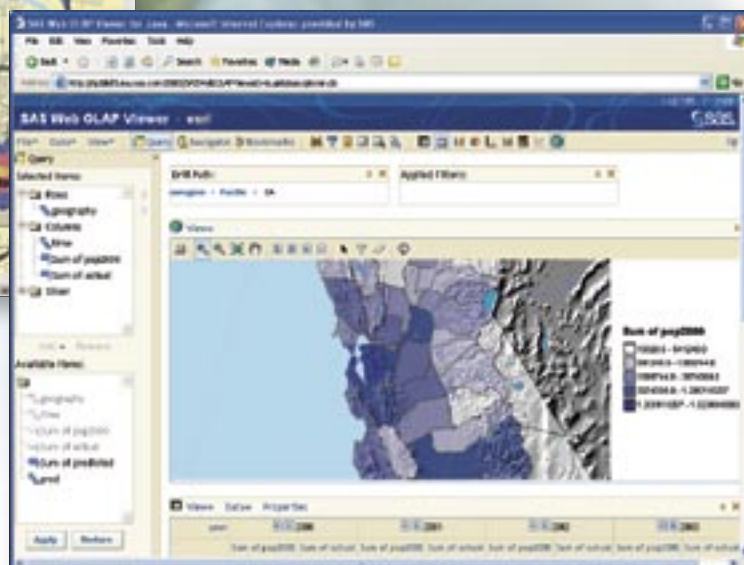
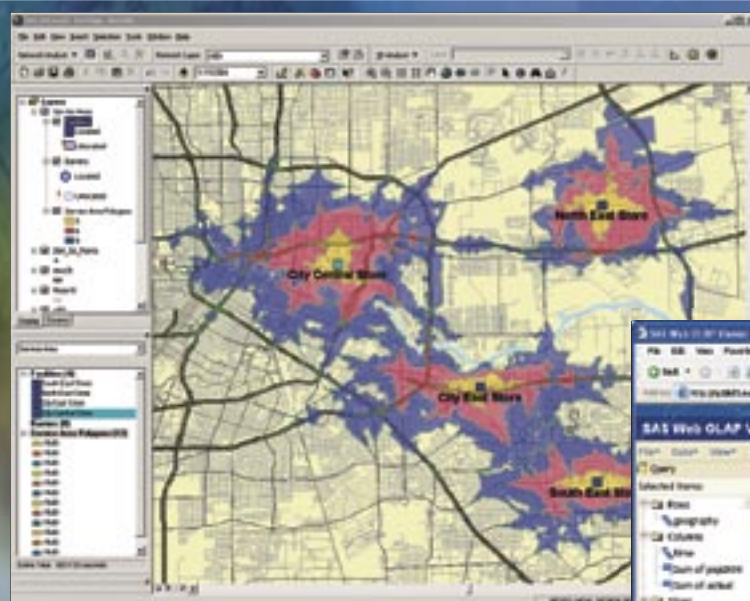


ESRI and SAS

Integrating GIS and SAS Analyses



Using ESRI® ArcGIS® mapping and spatial analysis capabilities with SAS® 9 allows you to analyze your data more effectively and communicate the results more completely and intuitively.

What Is GIS?

A geographic information system (GIS) uses computers and software to link the location of events and objects to descriptions of those events and objects. Unlike a flat paper map, a GIS can have many layers of information, all related by location. This linkage of descriptive data with location can reveal geographically influenced patterns or trends in customer, constituent, or patient data. It can also compute and display optimum vehicle routes, identify risk, discover new markets, and predict market impact of new facilities or competitor sites.

ESRI has developed an entire family of spatial analysis and mapping tools that work together to provide users with desktop GIS, Internet mapping, and enterprise GIS applications. These tools can result in more predictable outcomes, allow you to more effectively leverage opportunity, and mitigate risk.

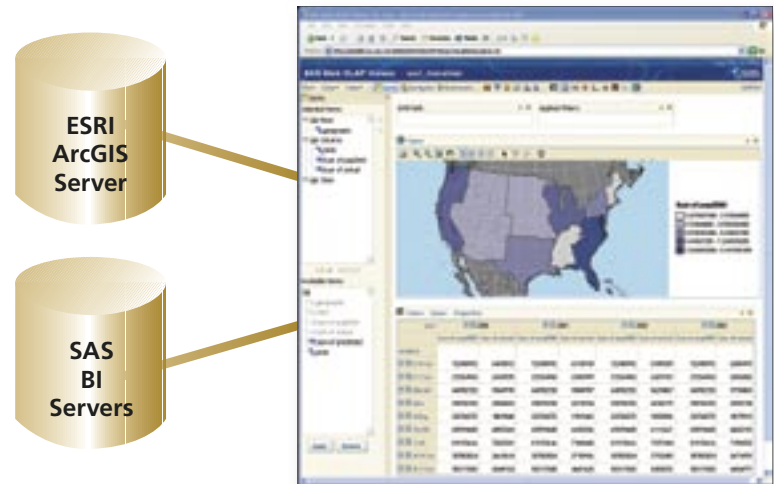
ESRI ArcGIS and SAS 9

ESRI and SAS have designed their latest software releases to take advantage of industry-standard development environments and a services-oriented architecture (SOA). This common development platform permits a synergistic integration of both companies' leading analytic applications. ESRI brings the valuable dimension of location to business intelligence, and SAS vastly extends the types of data and proven business analytics available to GIS.

SAS BI and Enterprise BI Servers and ArcGIS Server

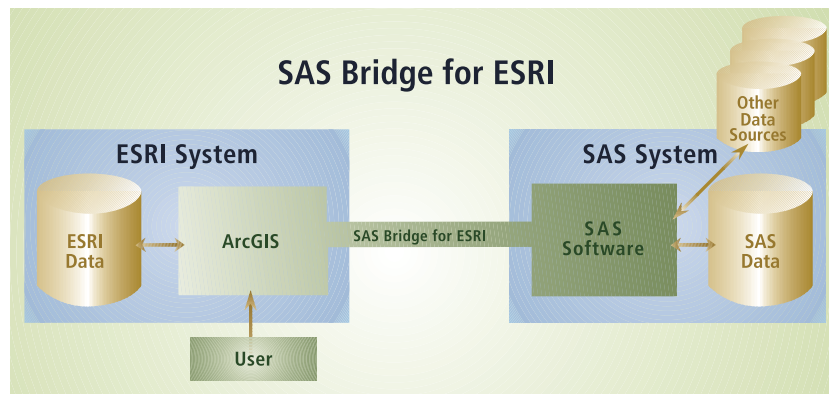
ArcGIS Server makes all of ESRI's rich geographic analysis and mapping technology available to users of the SAS BI and Enterprise BI Servers. ArcGIS Server works with your existing data through the SAS Web OLAP Viewer to deliver only the GIS functionality needed to meet your specific business intelligence requirements.

SAS Web OLAP Viewer



SAS Bridge for ESRI

With the SAS Bridge for ESRI, individual analysts can improve the efficiency of their organizations and communicate intelligent results by linking spatial, numeric, and textual data through a single interface. ESRI's ArcGIS Desktop software can directly access SAS data, via the SAS Bridge for ESRI, to add the dimension of location to business intelligence.



ESRI and SAS Provide

- Increased Efficiency
- Improved Communication
- Extended Analytical Capabilities

About ESRI

For more than 35 years, ESRI has been the leading developer of GIS software with more than 300,000 clients worldwide. ESRI software is used in the 200 largest cities in the United States and in more than 60 percent of counties and municipalities nationwide. Headquartered in California, ESRI has regional offices throughout the United States, international distributors in more than 90 countries, and more than 1,700 business partners. ESRI's goal is to develop comprehensive tools that enable users to efficiently manage, use, and serve geographic information to make a difference in the world around them. ESRI also provides consulting, implementation, and technical support services. ESRI can be found on the Web at www.esri.com.

ESRI

380 New York Street
Redlands, California
92373-8100, USA
Telephone: 909-793-2853
Fax: 909-793-5953

For more information
about ESRI, call

1-800-447-9778

Send e-mail inquiries to
sasinquiries@sas.com

Find SAS-specific information at
www.esri.com/sas

