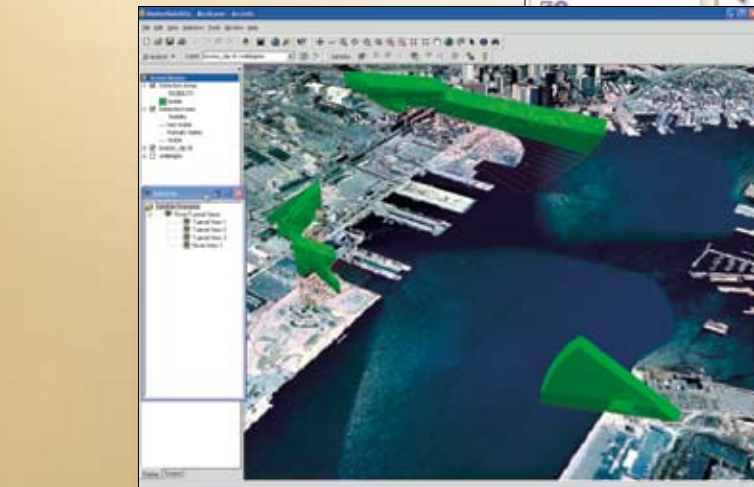
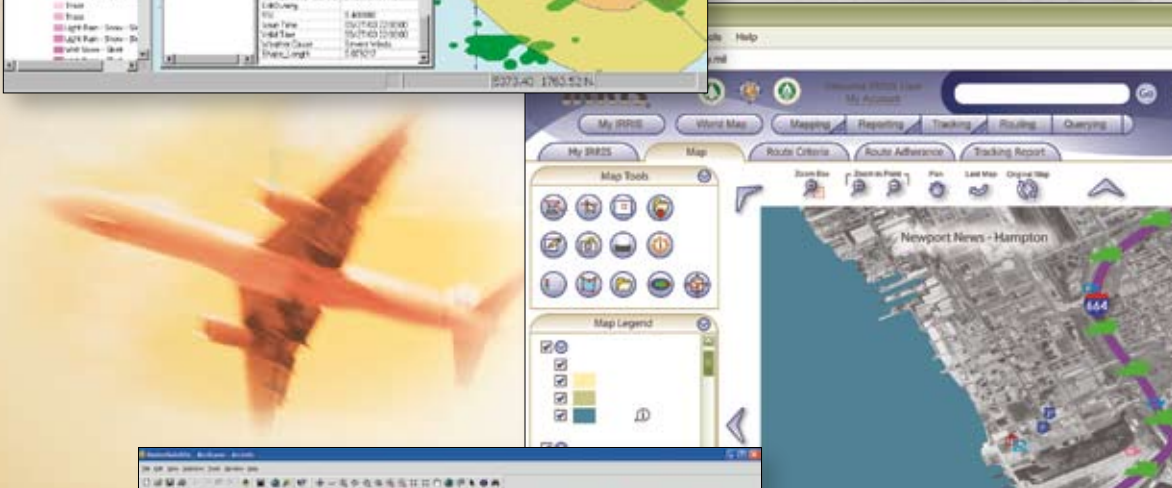
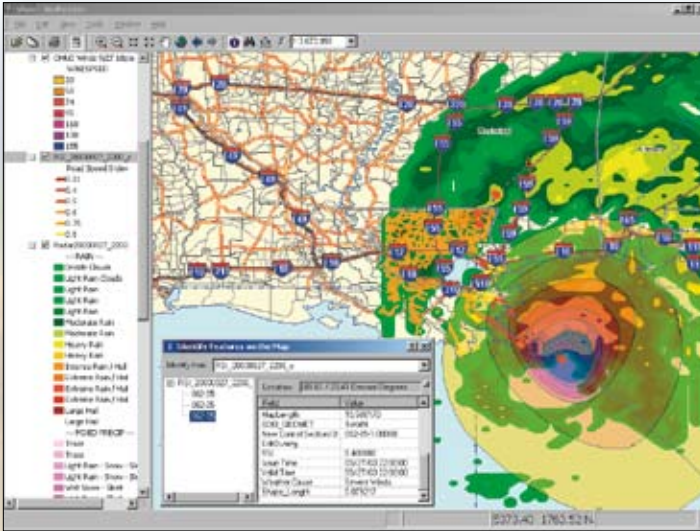


# ESRI® GIS Partner Solutions and Services for the **Transportation Industry**



# GEODECISIONS®

## An ESRI 2005 Partner of the Year



It takes skill, dedication, and experience to be recognized as one of the elite members of the transportation community that has successfully utilized powerful ESRI® software to deliver excellent client solutions. GeoDecisions has built a solid reputation in the transportation industry by providing innovative consulting services and customized solutions in a timely and cost-effective manner.

GeoDecisions has worked with more than 25 transportation agencies. We incorporate the best practices of the industry and experience from other projects to provide award-winning services and applications.

Mail: 207 Senate Avenue, Camp Hill, PA 17011

Phone: (866) 426-6388 (717) 763-7211

Fax: (717) 763-8150

E-mail: [info@geodecisions.com](mailto:info@geodecisions.com)

Web site: [www.geodecisions.com](http://www.geodecisions.com)



### Bringing the Power of Spatial Information to Transportation



Atlanta, GA • Austin, TX • Baltimore, MD • Chicago, IL • Columbus, OH • Harrisburg, PA • Madison, WI • New York, NY • Newark, DE  
Newport News, VA • Philadelphia, PA • Pittsburgh, PA • South Plainfield, NJ • State College, PA • St. Louis, MO • Tampa, FL • Washington, DC

# ESRI® GIS Partner Solutions

*for the Transportation Industry*

The members of both the ESRI Transportation Industry team and Business Partner Program would like to thank all the people who contributed, especially the business partners who have chosen to be listed. We encourage ESRI® software users to use this catalog as a resource to identify potential suppliers of GIS-based solutions or custom applications by firms with specific experience in the many specialty fields of transportation GIS listed here. We also encourage our existing business partners to consider the firms listed as potential teaming partners, especially where our mutual end user customers have broad or complex specifications requiring expertise spanning the abilities of two or more firms. The common platform of GIS offers interesting potential for integration and interoperability between different technologies and end user needs. This sort of solution blending will help us all achieve greater success in offering enterprise systems to our target markets.

Terry C. Bills  
Transportation Industry Manager

For more information, visit  
[www.esri.com/transportation](http://www.esri.com/transportation).

	Aviation	Fleet Management	Highways/Streets	ITS/Traffic	Maritime	MVA/DMV (crashes)	Railroads	Transit	Advantage	Consultant	Corporate Alliance	Corporate Consultant	Developer	OEM	Publisher	Reseller	Runtime	Other
Company	Industry Category									Type of Business Partner								
Advance Fiber Optics, Inc.																		
Africon Engineering International Pty. Ltd.																		
AirPhotoUSA LLC																		
Air-Trak.com, Inc.																		
Ala Mobility s.r.l.																		
AmberGIS																		
Applanix																		
Applied Geographics, Inc.																		
Applied Planning International, Inc.																		
ARCADIS																		
ARCBridge Consulting & Training, Inc.																		
arx iT Consulting																		
Atkins Danmark A/S																		
Avalanche Mapping																		
Avineon, Inc.																		
bd Systems Inc., Spatial Division																		
BEM Systems, Inc.																		
Bergmann Associates pc																		
Bluegrass GIS, Inc.																		
Bowne Management Systems, Inc.																		
Burns & McDonnell																		
Cambridge Systematics Inc.																		
Carter & Burgess Inc.																		
CH2M HILL																		
Chambers Group, Inc.																		
Citilabs Inc.																		
Civic Technologies, Inc.																		
Coastal Environments, Inc.																		
CommunityViz																		
CompassCom, Inc.																		
con terra GmbH																		
CSC Ploenzke AG																		
DCSE, Inc.																		
Deighton Associates Ltd.																		
Destiny Resources, Inc.																		
Digital Engineering Corporation																		
Earth Tech, Inc.																		
Edwards and Kelcey																		
EI Technologies, LLC																		
Electrical Systems Consultants Inc.																		
Empower Decision Systems Inc.																		
England, Thims & Miller, Inc.																		
EnTempus Inc.																		
ESEA																		
Europa Technologies Ltd.																		
Explorer Graphics Ltd.																		
Ferranti Computer Systems N.V.																		
First Gate Ventures																		
FoundOnEarth																		

Continued



	Aviation	Fleet Management	Highways/Streets	ITS/Traffic	Maritime	MVA/DMV (crashes)	Railroads	Transit	Advantage	Consultant	Corporate Alliance	Corporate Consultant	Developer	OEM	Publisher	Reseller	Runtime	Other
Company	Industry Category						Type of Business Partner											
Future Concepts																		
GAF AG																		
GBA Master Series, Inc.																		
Gecko Microsolutions, Inc.																		
Geo Imaging Consulting, Inc.																		
GeoAnalytics Inc.																		
GeoDecisions																		
Geonetics, Inc.																		
GeoNorth, LLC																		
Geoplan Opus Consultants Inc.																		
GEVAS Software Systementwicklung und Verkehrsinformatik GmbH																		
gINT Software																		
GIS Solutions, Inc.																		
GlobeExplorer, LLC																		
Gray Hill Solutions, Inc.																		
Greenman-Pedersen, Inc.																		
Gresham, Smith and Partners																		
GRW Aerial Surveys, Inc.																		
Haestad Methods																		
Hansen Information Technologies Inc.																		
HDR Engineering Inc.																		
Hewlett-Packard																		
HNTB Corporation																		
IBM																		
ICF Consulting, Inc.																		
IDELIX Software, Inc.																		
ImageNet Venture LLC																		
IMAPS LLC																		
INDUS Corporation																		
Infinite Enterprises																		
InfoGeographics, Inc.																		
INFORM—Network for Management Systems Limited																		
Institute of Information Technology, Inc.																		
International Mapping Associates Inc.																		
IVU Umwelt GmbH																		
James W. Sewall Company																		
Jones Edmunds & Associates, Inc.																		
L. Robert Kimball & Associates																		
Magnetek, Inc.																		
Maptech, Inc.																		
MapVision Technologies Inc.																		
Meteorlogix																		
Michael Baker Corporation																		
Navtrak Inc.																		
Neel-Schaffer Inc.																		
New Light Technologies, Inc.																		
Orbital Sciences																		
Parsons Brinckerhoff																		

Company	Page
Advance Fiber Optics, Inc.	6
Africon Engineering International Pty. Ltd.	6
AirPhotoUSA LLC	7
Air-Trak.com, Inc.	7
Ala Mobility s.r.l.	8
AmberGIS	8
Applanix	9
Applied Geographics, Inc.	9
Applied Planning International, Inc.	10
ARCADIS	11
ARCBridge Consulting & Training, Inc.	11
arx iT Consulting	12
Atkins Danmark A/S	12
Avalanche Mapping	13
Avineon, Inc.	13
bd Systems Inc., Spatial Division	14
BEM Systems, Inc.	14
Bergmann Associates pc	15
Bluegrass GIS, Inc.	15
Bowne Management Systems, Inc.	15
Burns & McDonnell	16
Cambridge Systematics Inc.	16
Carter & Burgess Inc.	17
CH2M HILL	17
Chambers Group, Inc.	18
Citilabs Inc.	18
Civic Technologies, Inc.	19
Coastal Environments, Inc.	19
CommunityViz	20
CompassCom, Inc.	20
con terra GmbH	21
CSC Ploenzke AG	21
DCSE, Inc.	22
Deighton Associates Ltd.	22
Destiny Resources, Inc.	23
Digital Engineering Corporation	23
Earth Tech, Inc.	24
Edwards and Kelcey	24
EI Technologies, LLC	25
Electrical Systems Consultants Inc.	25
Empower Decision Systems Inc.	26
England, Thims & Miller, Inc.	26
EnTempus Inc.	27
ESEA	27
Europa Technologies Ltd.	28
Explorer Graphics Ltd.	28
Ferranti Computer Systems N.V.	29
First Gate Ventures	29
FoundOnEarth	30
Future Concepts	30
GAF AG	31
GBA Master Series, Inc.	31
Gecko Microsolutions, Inc.	32
Geo Imaging Consulting, Inc.	32
GeoAnalytics Inc.	32
GeoDecisions	33
Geonetics, Inc.	33
GeoNorth, LLC	34
Geoplan Opus Consultants Inc.	34
GEVAS Software Systementwicklung und Verkehrsinformatik GmbH	35
gINT Software	35
GIS Solutions, Inc.	36
GlobeExplorer, LLC	36
Gray Hill Solutions, Inc.	37
Greenman-Pedersen, Inc.	37
Gresham, Smith and Partners	38
GRW Aerial Surveys, Inc.	38
Haestad Methods	38
Hansen Information Technologies Inc.	43
HDR Engineering Inc.	43
Hewlett-Packard	44
HNTB Corporation	44
IBM	45
ICF Consulting, Inc.	46
IDELIX Software, Inc.	46
ImageNet Venture LLC	47
IMAPS LLC	47
INDUS Corporation	47
Infinite Enterprises	48

Company	Aviation	Fleet Management	Highways/Streets	ITS/Traffic	Maritime	MVA/DMV (crashes)	Railroads	Transit	Advantage	Consultant	Corporate Alliance	Corporate Consultant	Developer	OEM	Publisher	Reseller	Runtime	Other
Parsons Corporation	•	•	•	•	•	•	•	•				•						
Pathfinder Logistics Solutions, Inc.		•	•													•		
Patrick Engineering Inc.	•		•				•									•		
PBS&J	•		•	•				•				•	•			•		
Pixxures, Inc.	•	•	•	•			•	•							•	•		
Planet GIS LLC			•				•	•		•								
Planning Technologies Inc.			•	•			•	•					•					
PTV AG		•		•									•					
R.A. Smith & Associates, Inc.			•			•		•		•						•		
Radio Satellite Integrators, Inc.		•		•	•			•					•	•		•		
Rapidis			•	•			•	•		•			•					
Red Hen Systems, Inc.	•		•		•	•	•	•					•					
Ripple Systems			•	•				•					•					
RouteMatch Software Inc.								•					•					
RouteSmart Technologies, Inc.		•											•			•		
Safe Software, Inc.	•	•	•	•	•		•	•		•	•		•					
SAS U.S. Government	•	•	•	•	•	•	•	•		•								
Short Elliott Hendrickson Inc.			•										•			•		
Software Technologies		•	•				•	•					•					
Southbank Systems Limited			•										•					
Spatial Dimension (Pty.) Ltd.			•	•									•					
speedikon Facility Management AG	•	•				•	•						•					
Spescom Software, Inc.							•						•			•		
Surveying And Mapping, Inc.	•		•				•	•		•								
Tadpole-Cartesia Inc.	•	•	•	•	•	•	•	•		•			•			•		
Tele Atlas		•	•	•			•	•			•							
The Berger Group			•					•			•							
The CEDRA Corporation	•		•				•						•			•		
Thinformation Inc.			•	•			•									•		
Topomat Technologies SA			•	•									•					
Traftools Inc.		•	•	•				•					•					
Trapeze Software Group								•					•	•		•		
Trimble Navigation Limited		•	•	•	•		•	•		•								
Triona AB		•	•	•			•	•		•			•			•	•	
Truck Dispatching Innovations Inc.		•														•		
Universal Map Enterprises Inc.		•	•	•		•	•	•		•								
University Informatics Associates Inc.		•											•					
Urban Crossroads, Inc.			•	•						•								
Vanasse Hangen Brustlin, Inc.			•	•									•			•		
VARS BRNO a.s.		•	•	•	•								•					
Vieux & Associates, Inc.	•	•	•	•	•	•	•	•		•								
Visual Learning Systems, Inc.	•	•	•	•	•	•	•	•					•					
Voice Insight	•	•	•	•	•		•	•					•					
What if?, Inc.			•					•					•					
Wolfel Messysteme Software GmbH & Co.	•		•		•		•						•					
Works Consulting LLC			•	•		•	•			•								
WSP Sweden AB	•	•	•	•	•		•	•		•			•					
Zepco Sales & Service Inc.		•	•															•
<b>Solution Provider</b>	<b>Industry Category</b>					<b>Type of Business Partner</b>												
WasteBid.com, Inc.		•					•						•					

Company	Page
InfoGeographics, Inc.	48
INFORM—Network for Management Systems Limited	49
Institute of Information Technology, Inc.	49
International Mapping Associates Inc.	50
IVU Umwelt GmbH	50
James W. Sewall Company	51
Jones Edmunds & Associates, Inc.	51
L. Robert Kimball & Associates	51
Magnetek, Inc.	52
Maptech, Inc.	52
MapVision Technologies Inc.	52
Meteorlogix	53
Michael Baker Corporation	54
Navtrak Inc.	54
Neel-Schaffer Inc.	55
New Light Technologies, Inc.	55
Orbital Sciences	56
Parsons Brinckerhoff	56
Parsons Corporation	56
Pathfinder Logistics Solutions, Inc.	57
Patrick Engineering Inc.	57
PBS&J	57
Pixxures, Inc.	58
Planet GIS LLC	58
Planning Technologies Inc.	59
PTV AG	59
R.A. Smith & Associates, Inc.	60
Radio Satellite Integrators, Inc.	60
Rapidis	61
Red Hen Systems, Inc.	61
Ripple Systems	62
RouteMatch Software Inc.	62
RouteSmart Technologies, Inc.	62
Safe Software, Inc.	63
SAS U.S. Government	63
Short Elliott Hendrickson Inc.	64
Software Technologies	64
Southbank Systems Limited	64
Spatial Dimension (Pty.) Ltd.	65
speedikon Facility Management AG	65
Spescom Software, Inc.	66
Surveying And Mapping, Inc.	66
Tadpole-Cartesia Inc.	67
Tele Atlas	67
The Berger Group	68
The CEDRA Corporation	68
Thinformation Inc.	69
Topomat Technologies SA	69
Traftools Inc.	70
Trapeze Software Group	70
Trimble Navigation Limited	71
Triona AB	71
Truck Dispatching Innovations Inc.	72
Universal Map Enterprises Inc.	72
University Informatics Associates Inc.	72
Urban Crossroads, Inc.	73
Vanasse Hangen Brustlin, Inc.	73
VARS BRNO a.s.	74
Vieux & Associates, Inc.	74
Visual Learning Systems, Inc.	75
Voice Insight	75
What if?, Inc.	76
Wolfel Messysteme Software GmbH & Co.	76
Works Consulting LLC	77
WSP Sweden AB	77
Zepco Sales & Service Inc.	78
<b>Solution Provider</b>	<b>Page</b>
WasteBid.com, Inc.	78



### Advance Fiber Optics, Inc.

871 W. Robinson Drive  
North Salt Lake, UT 84054  
USA

Phone: 801-936-0970  
Fax: 801-936-0977  
Web: [www.ospinsight.com](http://www.ospinsight.com)

#### Industry Categories

- ITS/Traffic

#### Type of Business Partner

- Developer

#### Region

- Worldwide

Advance Fiber Optics, Inc. (AFO), developed an affordable version of its OSPInSight® resource management software for the ESRI ArcMap™ 8.3 platform. Extensively deployed among cable TV, telecommunications, and other Fortune 500 corporations, OSPInSight also empowers transportation/ITS network, and other management. OSPInSight enables ESRI users to boost the functionality and maintainability of its fiber, copper, and coaxial networks by providing sophisticated reporting down to individual fibers, advanced CAD-based drawing tools, and an easy-to-use point-and-click architecture. OSPInSight is supported by AFO's extensive Data Services Department.

#### Product Description

1. OSPM-Edit—ArcEditor™: Input, edit, visualize, and analyze network assets.
2. OSPM-View—ArcView®: Visualize, redline, and analyze network assets.



### Africon Engineering International Pty. Ltd.

1040 Burnett Street  
Hatfield, Pretoria 0083  
South Africa

Phone: 27-12-427-2491  
Fax: 27-12-427-2926  
Web: [www.africon.com](http://www.africon.com)

#### Industry Categories

- Fleet Management
- Highways/Streets
- ITS/Traffic
- Transit

#### Type of Business Partner

- Consultant
- Developer

#### Region

- Africa
- Asia Pacific
- Europe
- Middle East

Africon Engineering International Pty. Ltd. is an international consultancy providing multidisciplinary professional services in engineering, infrastructure-related development, and management. With its in-depth knowledge of a wide range of markets and industries gained over half a century, Africon is capable of providing broad-based expertise and resources in both developed and developing countries. Because of the all-encompassing scope of work undertaken by the group, Africon has established a number of specialized divisions and associated companies, both in South Africa and internationally.

#### Product Description

1. GEMC<sup>3</sup>—MapObjects®: Management system for the Global Emergency Command Control Centre (Poland and Western Cape)
2. Gauteng CMIP Backlog—MapObjects: A model to determine the backlog of services and costs involved
3. N3RMS—MapObjects: Integration of various N3 toll road management systems into one easy-to-use application
4. EC-BMS—MapObjects: Bridge management system for the Eastern Cape Province



### AirPhotoUSA LLC

7122 N. 27th Avenue  
Phoenix, AZ 85051  
USA

Phone: 602-864-3417  
Fax: 602-864-3420  
Web: www.airphotousa.com

#### Industry Categories

- Aviation
- Fleet Management
- Highways/Streets
- ITS/Traffic
- Railroads
- Transit

#### Type of Business Partner

- Data Provider

#### Region

- Canada
- USA

AirPhotoUSA LLC produces custom, digitally acquired, seamless, linear aerial coverage, and large-area film-based projects utilizing exclusive technology designed for exceptionally fast project delivery and affordability. It also offers the largest off-the-shelf archive of current, seamless, and high-resolution color aerial photography for U.S. metropolitan regions and maintains the entire USGS DOQQ library as a seamless, enhanced, nationwide basemap. All imagery products ship with PhotoMapper™/MapHandler™ technology and actively integrate with ArcGIS® as an on-demand seamless basemap. Advantages include speed, versatility, accessibility, and low cost.

#### Product Description

1. MapHandler: The fastest aerial interface that actively integrates seamless AirPhotoUSA orthoimagery into ArcGIS projects
2. PhotoMapper: A stand-alone, easy-to-use viewer that extends the value of your GIS enterprise-wide system with on-demand access to imagery and imported shapefile layers
3. EDOQmapper™: On-demand access and innovative control to a seamless three-million-square-mile national basemap including the entire USGS DOQQ library reprocessed and enhanced using AirPhotoUSA proprietary technology
4. StableEarth™: Custom, digitally acquired, seamless, linear imagery for geographic information systems for transportation (GIS-T) that provides faster project delivery and reduces costs with the added benefit of PhotoMapper



### Air-Trak.com, Inc.

11353 Sorrento Valley Road  
San Diego, CA 92121-1303  
USA

Phone: 858-677-9950  
Fax: 858-677-9959  
Web: www.air-trak.com

#### Industry Categories

- Fleet Management
- Highways/Streets
- ITS/Traffic
- Maritime
- Railroads
- Transit

#### Type of Business Partner

- Developer

#### Region

- Canada
- USA

Cloudberry™ Wireless AVL and Messaging Services offer an affordable, easy-to-use, Internet-based solution for GPS automatic vehicle location (AVL), graphical real-time fleet tracking, and two-way messaging. Cloudberry, built on core ESRI technology (MapObjects and RouteMAP™ IMS), interfaces with ESRI products including ArcLogistics™ Route and ArcPad®. ArcGIS data can overlay live tracking maps. Cloudberry, together with ArcLogistics Route, can be used for back-office routing and fleet logistics, allowing fleet activities to be monitored in real time.

#### Product Description

1. TerraTrak—MapObjects and RouteMAP IMS: Live graphical fleet tracking
2. TerraTrak+—MapObjects and RouteMAP IMS: Live graphical fleet tracking and two-way messaging
3. DualTrak+—MapObjects and RouteMAP IMS: Live graphical fleet tracking and two-way messaging with land and satellite communications
4. Air-Trak for Nextel®—MapObjects and RouteMAP IMS: Live graphical tracking with GPS phone



### Ala Mobility s.r.l.

Via Quintiliano 18  
20138 Milano  
Italy

Phone: 2-5803971  
Fax: 2-5062765  
Web: [www.alamobility.it](http://www.alamobility.it)

#### Industry Categories

- Fleet Management
- ITS/Traffic

#### Type of Business Partner

- Consultant
- Developer

#### Region

- Europe

Ala Mobility s.r.l. is a new company belonging to Ala Network Group, an Italian company that works in the public transportation field. Ala Mobility, with its GIS-mobility® platform, is capable of developing, installing, and managing infomobility modular systems: cartographic Web portals, automatic vehicle monitoring systems, travel and routing management systems, and innovative ticketing systems. All these components share the same IT architecture, which also integrates wireless technologies and the location-based services world.

#### Product Description

GISmobility—ArcIMS®, NetEngine™, and ArcSDE®: Infomobility platform



### AmberGIS

2239 Encino Loop  
San Antonio, TX 78259  
USA

Phone: 210-497-1430  
Web: [www.ambergis.com](http://www.ambergis.com)

#### Industry Categories

- Highways/Streets
- ITS/Traffic
- Railroads
- Transit

#### Type of Business Partner

- Consultant

#### Region

- USA

AmberGIS provides ArcObjects™ programming services to a variety of organizations including state Departments of Transportation (DOTs), transit authorities, and municipalities. Often thought of as “the partner’s partner,” AmberGIS frequently subcontracts with other business partners to help out with the trickier parts of an application development project.

#### Product Description

1. AmberConflate: Conflation tools for ArcMap
2. AmberCarto: Stores cartographics in the geodatabase





### Applanix

85 Leek Crescent  
Richmond Hill, Ontario L4B 3B3  
Canada

Phone: 905-709-4600  
Fax: 905-709-6027  
Web: [www.applanix.com](http://www.applanix.com)

#### Industry Categories

- Aviation
- Highways/Streets
- ITS/Traffic
- Maritime
- Railroads

#### Type of Business Partner

- Developer

#### Region

- Worldwide

Applanix, a wholly owned subsidiary of Trimble, develops, manufactures, sells, and supports precision products that accurately and robustly measure the position and orientation of vehicles in dynamic environments. Applanix Position and Orientation Systems (POS™) are used in a variety of applications including road profiling, GIS data acquisition, aerial survey and mapping, railroad track maintenance, and seafloor mapping. Applanix strives to support customers around the world with exceptional service—anywhere, anytime.

Established in 1991, Applanix has enjoyed continuous, profitable growth. It has been named one of the fastest growing Canadian companies by *PROFIT* magazine for four consecutive years and has been recognized as a leading Canadian exporter by FedEx Canada and the governments of Ontario and Canada.

#### Product Description

1. POS LV—ArcGIS: POS LV provides robust position and orientation information for sensors used to collect remotely sensed data such as road surface characteristics and the location and condition of assets.
2. DSS—ArcGIS: The Digital Sensor System (DSS) is a compact, rapidly deployable, directly georeferenced, airborne digital sensor.



### Applied Geographics, Inc.

355 Congress Street, Suite 300A  
Boston, MA 02210  
USA

Phone: 617-292-7125  
Fax: 617-292-7911  
Web: [www.appgeo.com](http://www.appgeo.com)

#### Industry Categories

- Aviation
- Fleet Management
- Highways/Streets
- Railroads
- Transit

#### Type of Business Partner

- Consultant
- Developer

#### Region

- USA

Applied Geographics, Inc. (AGI), was formed in 1991 as a company exclusively focused on providing high-quality GIS services to government and private sector clients. AGI professional staff includes senior project managers, programmers, data-base developers, software architects, GIS analysts, and data automation and Web mapping specialists. AGI has assisted such clients as Massport, Rhode Island DOT, the Federal Railroad Administration, and the Volpe National Transportation Systems Center to implement GIS systems, develop GIS applications for tracking airline traffic, conduct a variety of environmental analyses, and evaluate potential locations for new railroad corridors. As part of these tasks, AGI produced various GIS data layers and high-quality cartographic maps.

#### Product Description

1. Environmental analysis—ArcGIS and ArcInfo®
2. Data development—ArcGIS and ArcInfo
3. High-quality map production—ArcMap
4. Web site development—ArcIMS



### Applied Planning International, Inc.

P.O. Box 910  
Wilton, CA 95693  
USA

Phone: 916-687-8206  
Fax: 916-687-8216  
Web: [www.api-corp.com](http://www.api-corp.com)

#### Industry Categories

- Aviation
- Fleet Management
- Highways/Streets
- ITS/Traffic
- Maritime
- MVA/DMV (crashes)
- Railroads
- Transit

#### Type of Business Partner

- Consultant
- Reseller

#### Region

- Worldwide

Applied Planning International, Inc. (API), is a small, minority, woman-owned business that is one of the largest facilities systems integrators with more than 250 implementations worldwide. API provides management consulting in GIS systems, facilities systems, Enterprise Asset Management/Computerized Maintenance Management System (EAM/CMMS), project management and controls, information management, and training. API is a certified integration and reseller partner for all ESRI software products. API integrates ESRI products with Maximo®, Datastream®, Oracle®, handheld products, and software as well as provides other software solutions. API is also a reseller of ESRI software, handheld software, Maximo, and Datastream software products on California CMAS and GSA contracts.

#### Product Description

1. Maximo to ArcGIS: Links GIS data to CMMS
2. Data integration with Maximo, Datastream, and others



## ARCADIS

420 E. Park Avenue  
Greenville, SC 29601  
USA

Phone: 864-242-1717  
Fax: 864-235-9062  
Web: www.arcadis-us.com

### Industry Categories

- Fleet Management
- Highways/Streets
- Maritime
- MVA/DMV (crashes)
- Railroads
- Transit

### Type of Business Partner

- Corporate Consultant
- Reseller

### Region

- Worldwide

ARCADIS is a leading global knowledge-driven service provider, active in the fields of infrastructure, buildings, environment, and communications. ARCADIS complements tradition with new techniques and technological advances. Seasoned staff members provide effective, lasting transportation planning, engineering, design, and management options from conceptual design to system integration. ARCADIS excels in understanding both the engineering and GIS needs of its clients. Its goal is to appropriately integrate both the GIS world and engineering environment to produce a quality product that meets information and design needs. ARCADIS uses ArcGIS 9.x and ArcSDE as its standard developing platform and specializes in migrating clients to the new technology. ARCADIS is a supporter and an active participant in water/wastewater, storm water, transportation (linear referencing), parcel, addressing, enterprise local government, communications, and gas geodata-base standards development on local and national levels. It has decades of experience shaping local regulations and cultural concerns into useful modes of transport. ARCADIS considers the whole picture—environmental concerns, historical preservation, and community outlook. As a resident of the communities it serves, ARCADIS is vested in the success of projects for all families.

### Product Description

1. Geodatabase design—ArcSDE and ArcGIS: Modeling
2. Conversion—ArcSDE and ArcGIS: Data conversion
3. Modeling—ArcGIS and other products: Modeling transportation networks
4. Consulting—ArcSDE and ArcGIS: On-site technical consulting



## ARCBridge Consulting & Training, Inc.

203 Elden Street, Suite 303  
Herndon, VA 20170  
USA

Phone: 703-834-6511  
Fax: 703-834-6514  
Web: www.arcbridge.com

### Industry Categories

- Highways/Streets

### Type of Business Partner

- Consultant
- Developer
- Reseller

### Region

- Canada
- USA

ARCBridge Consulting & Training, Inc., is a developer of software applications and extensions for the ArcView and ArcIMS platforms. Its principal clients are federal, county, and local government agencies. It supplies solutions to police and fire departments, planners, GIS analysts, demographers, and so on. In 2001, ARCBridge was awarded ESRI's Partner of the Year Award. Other products include ADDRESSolv for geocoding, FIRESolv Net for fire NFPA 1710 planning, and CRIMESolv for crime analysis.

### Product Description

NETSolv—ArcGIS: Performs street network analysis for routes and service area determination



### arx iT Consulting

73, rue de St-Jean  
1201 Genève  
Switzerland

Phone: +41-22-344-45-10  
Web: [www.arxit.com](http://www.arxit.com)

#### Industry Categories

- Fleet Management
- Highways/Streets
- ITS/Traffic

#### Type of Business Partner

- Consultant

#### Region

- Europe

arx iT Consulting specializes in technological advising and customized GIS solutions development. It has vast experience in ArcObjects, MapObjects, and ArcIMS programming as well as in designing and developing Oracle/ArcSDE solutions. arx iT is especially interested in mobility, transportation, ITS, logistic, and environment-related fields. Moreover, the company has adopted a quality-oriented approach in obtaining ISO 9001 certification.

#### Product Description

1. Infomobilité—ArcIMS: Real-time information traffic ([www.geneve.ch/infomobilité](http://www.geneve.ch/infomobilité))
2. AGIRE—ArcObjects: GIS events management systems
3. SITAG—ArcIMS 9 .NET: Intranet site for the Geneva International Airport

## ATKINS

### Atkins Danmark A/S

Pilestraede 58  
Copenhagen DK-1112  
Denmark

Phone: 45-82-33-90-00  
Fax: 45-82-33-90-01  
Web: [www.atkins.dk](http://www.atkins.dk)

#### Industry Categories

- Fleet Management
- Highways/Streets
- ITS/Traffic
- Railroads

#### Type of Business Partner

- Developer

#### Region

- Worldwide

If users need to handle multimodal transportation and infrastructure data with many interdependencies and would like to do so on the industrial strength state-of-the-art GIS platform ArcGIS, then the Transportation Object Platform (TOP) is the perfect tool. TOP is an extension to ArcGIS consisting of specialized objects for transportation data and various tools for editing, visualization, and modeling purposes. As an extension to the ArcGIS product family, TOP benefits from the entire functionality offered by the professional high-end GIS from ESRI (e.g., the ability to store and maintain data on a central database, using versioned editing and a wide range of powerful editing and analysis tools). TOP makes it possible to work with complex and detailed data, describing transportation networks and the flows on them, in an intuitive GIS environment. For modeling purposes, TOP comes with import and export facilities for the EMME/2 transportation planning software. TOP also integrates with 1st Frontstore's Travel Management System (TMS), a market leading system for eTicketing. TMS is designed for optimal structure and service provision for public transport service companies based on existing time schedules, pricing structures, and zoning systems.

#### Product Description

TOP—ArcGIS: Handles transportation networks in ArcGIS



### Avalanche Mapping

247, 637 B, South Broadway  
Boulder, CO 80305  
USA

Phone: 303-528-0461

Web: [www.avalanchemapping.org](http://www.avalanchemapping.org)

#### Industry Categories

- Highways/Streets
- MVA/DMV (crashes)
- Railroads

#### Type of Business Partner

- Consultant

#### Region

- Canada
- USA

Avalanche Mapping develops avalanche atlas maps for referencing historical avalanches. It develops mobile GIS/GPS solutions for collecting field data. Database and geodatabase design is also one of Avalanche Mapping's specialties. It also teaches *ArcGIS I* and *ArcGIS II* courses.

#### Product Description

1. Geodatabase model for Snow and Avalanche Observations/Avalanche Mapping ArcPad toolbar
2. ArcPad applications/Mobile GIS solutions



### Avineon, Inc.

4825 Mark Center Drive  
Alexandria, VA 22311  
USA

Phone: 703-671-1900

Fax: 703-671-1901

Web: [www.avineon.com](http://www.avineon.com)

#### Industry Categories

- Aviation
- Fleet Management
- Highways/Streets
- ITS/Traffic
- Maritime
- MVA/DMV (crashes)
- Railroads
- Transit

#### Type of Business Partner

- Consultant
- Developer

#### Region

- Worldwide

Avineon, Inc., uniquely combines its experience with large utility companies to provide numerous advantages to ESRI software solutions including requirements analysis, data modeling, data maintenance/conversion/migration, application development, systems design, and systems integration. Avineon also offers implementation planning, functional requirements analysis, project management, ESRI product training, maintenance support, and Internet development. As an ESRI business partner, Avineon stays ahead of the curve to provide the latest ESRI solutions to electric, gas, water, sewer, and storm water companies.

#### Product Description

GIS services—All ESRI products: Technical services, consulting, and management





### bd Systems Inc., Spatial Division

385 Van Ness Avenue, Suite 200  
Torrance, CA 90501  
USA

Phone: 310-618-8798

Fax: 310-782-5737

Web: [www.bdspatial.com](http://www.bdspatial.com)

#### Industry Categories

- Highways/Streets
- ITS/Traffic
- MVA/DMV (crashes)
- Railroads
- Transit

#### Type of Business Partner

- Consultant
- Developer
- Reseller

#### Region

- Worldwide

Founded in 1990, bd Systems Inc., Spatial Division (formerly GIS/Trans, Ltd.), was the first vendor-independent corporation in the new fields of GIS-T and integrated transportation information solutions. The company provides services and products to clients throughout the United States and around the world. Headquartered in Torrance, California, bd Systems, Spatial Division, has regional offices in Costa Mesa and Oakland, California, and Silver Spring, Maryland.

#### Product Description

1. Transit tools—ArcGIS: Web-based transit system management tool
2. Rideshare—ArcView: GIS-based ride share management software
3. Easy Conflate™ V3.0—ArcInfo: Automates the merging of spatial data layers



### BEM Systems, Inc.

100 Passaic Avenue  
Chatham, NJ 07928  
USA

Phone: 908-598-2600

Fax: 908-598-2622

Web: [www.bemsys.com](http://www.bemsys.com)

#### Industry Categories

- Highways/Streets
- Railroads
- Transit

#### Type of Business Partner

- Consultant
- Developer

#### Region

- USA

BEM Systems, Inc., provides custom and commercial desktop and Web-based GIS solutions to the transportation industry with an emphasis on environmental management, construction, and property acquisition support. Applications are built using industry-standard tools such as Microsoft® SQL Server, Access, Visual Studio® .NET (VB .NET and ASP .NET), and traditional ASP integrated with ESRI's MapObjects and ArcIMS. In addition to application development, BEM can provide data acquisition, map, and GIS database development support for ArcGIS and ArcView 3.x projects.

#### Product Description

1. STOICS® 4.0—MapObjects: Spatial data standards-compliant storage tank management and compliance system with embedded GIS mapping and reporting
2. MatTrak™ 1.0—MapObjects: Materials movement tracking system supporting environmental contaminant and cost tracking for construction projects with embedded GIS mapping and reporting
3. PAECETrak™ 3.1—MapObjects: Property acquisition support including environmental and acquisition cost tracking, acquisition status, and GIS mapping and reporting



### Bergmann Associates pc

Waterfront Village Center  
Buffalo, NY 14202  
USA

Phone: 716-852-3211

Fax: 716-852-1767

Web: [www.bergmannpc.com](http://www.bergmannpc.com),  
[www.dig-smart.com](http://www.dig-smart.com), [www.baviz.com](http://www.baviz.com)

#### Industry Categories

- Highways/Streets
- ITS/Traffic
- Transit

#### Type of Business Partner

- Corporate Consultant

#### Region

- USA

Bergmann Associates pc has long been involved in creating GIS-T and transportation applications for ESRI products. It has developed both custom solutions and COTS products to meet various demands across various transportation sectors. It specializes in underground utility (one-call) ticket management software, three-dimensional visualization and urban simulation for traffic and noise analysis, ITS development and integration, and complex asset management systems.

#### Product Description

1. Dig-Smart™—ArcGIS: One-call ticket management extension
2. SIMS—ArcView: Street inventory management system
3. Visualization—ArcView: Real-time three-dimensional modeling



### Bluegrass GIS, Inc.

101 Mary Todd Drive  
Frankfort, KY 40601-8771  
USA

Phone: 502-695-9314

Fax: 502-695-9316

Web: [www.bluegrassgis.com](http://www.bluegrassgis.com)

#### Industry Categories

- Highways/Streets

#### Type of Business Partner

- Consultant

#### Region

- USA

Bluegrass GIS, Inc., a leading provider of ArcGIS implementation services, has expertise in ArcGIS, ArcIMS, ArcSDE, Oracle, SQL Server, and VB .NET. Its team of experienced GIS professionals provides system/database design, application development, implementation planning, data conversion, quality control, corporate database integration, technical support, project management, and contract staffing. Its transportation clients include the Federal Highway Administration; Iowa DOT; Minnesota DOT; St. Louis County Department of Highways; and Yavapai County, Arizona.

#### Product Description

GIS implementation, linear referencing, and planning for ArcGIS, ArcIMS, and ArcSDE



### Bowne Management Systems, Inc.

235 East Jericho Turnpike  
Mineola, NY 11501  
USA

Phone: 516-746-2350

Fax: 516-747-1396

Web: [www.bownegroup.com](http://www.bownegroup.com)

#### Industry Categories

- Fleet Management
- Highways/Streets
- MVA/DMV (crashes)
- Railroads
- Transit

#### Type of Business Partner

- Consultant

#### Region

- USA

Bowne Management Systems, Inc. (BMS), provides IT solutions ranging from GIS and spatial data warehouses to custom applications utilizing Web-based and wireless technologies. BMS provides full life cycle consulting services for transportation and logistics management including street and transportation networks, linear referencing and dynamic segmentation, and location coding and address standards. BMS has built spatial data warehouses, enterprise GIS applications, handheld computing solutions, and asset and infrastructure management systems for state, city, and local transportation agencies.

#### Product Description

BMS is a provider of consulting services using the complete set of ESRI products.



### Burns & McDonnell

9400 Ward Parkway  
Kansas City, MO 64114

Phone: 816-333-9400  
Fax: 816-822-3463  
Web: [www.burnsmcd.com](http://www.burnsmcd.com)

#### Industry Categories

- Aviation
- Highways/Streets
- ITS/Traffic

#### Type of Business Partner

- Consultant
- Developer

#### Region

- USA

Burns & McDonnell is a full-service engineering, architectural, construction, and environmental firm that plans, designs, permits, constructs, and manages facilities all over the world. The technology consultants of Burns & McDonnell are teamed with a multidisciplinary staff of more than 2,000 engineers, architects, planners, estimators, economists, and scientists to achieve excellence in virtually all design disciplines. Founded in 1898, Burns & McDonnell can help guide transportation projects from initial studies and planning through design, permitting, and construction. Burns & McDonnell fused the advantages of GIS and IT with its traditional engineering approaches to accomplish its main mission—to make clients successful.

#### Product Description

TrueTraffic is a new ArcGIS extension that gives a true representation of traffic accidents. Current methods of performing collision diagramming are outdated and do not take advantage of advances in GIS. For this reason, Burns & McDonnell built TrueTraffic, a tool that benefits counties and municipalities by adding GIS capabilities to traffic analysis. The tool uses automated mapping procedures for diagramming intersection and midblock accidents. TrueTraffic gives a more accurate image of the roadway by plotting accident symbols on centerline data and rotates the accidents to show how they actually occurred according to the curvatures and angles of the road.

TrueTraffic not only produces better collision diagrams, but it also incorporates the full functionality of ArcGIS. By combining the existing technology of ArcGIS and the new tools of TrueTraffic, a solution exists that provides a more efficient method of analyzing traffic accident patterns.

Instead of creating generic accident diagrams with no spatial orientation, TrueTraffic combines GIS technology and collision diagramming to produce a more accurate representation of accidents at intersections and midblock segments.



### Cambridge Systematics Inc.

100 Cambridge Park Drive  
Cambridge, MA 02140  
USA

Phone: 617-354-0167  
Fax: 617-354-1542  
Web: [www.camsys.com](http://www.camsys.com)

#### Industry Categories

- Highways/Streets
- ITS/Traffic
- MVA/DMV (crashes)
- Railroads
- Transit

#### Type of Business Partner

- Consultant

#### Region

- Worldwide

When transportation is the focus, Cambridge Systematics Inc. can help achieve goals. It is a transportation specialist, dedicated to ensuring that transportation investments deliver the best possible results. By providing innovative policy and planning solutions, objective analysis, and technology applications, it helps clients meet future transportation needs while improving the performance of existing infrastructure and operations. Above all, the firm is committed to its clients' success in making transportation better for future generations.

#### Product Description

1. MTIS—ArcIMS: Provides transit trip options and schedule information
2. MHEAT—ArcGIS: Analyzes benefit/cost of transportation investments
3. ATPMT—ArcGIS: Analyzes varied benefits of transportation projects

## CarterBurgess

### Carter & Burgess Inc.

777 Main Street  
Fort Worth, TX 76102  
USA

Phone: 817-735-6000  
Fax: 817-735-6148  
Web: [www.c-b.com](http://www.c-b.com)

#### Industry Categories

- Aviation
- Highways/Streets
- ITS/Traffic
- Maritime
- MVA/DMV (crashes)
- Railroads
- Transit

#### Type of Business Partner

- Corporate Consultant

#### Region

- USA

Opening a world of opportunities, Carter & Burgess Inc. offers comprehensive GIS services as both a specialized component of its engineering, architecture, planning, and environmental core and as a stand-alone service. The company creates, edits, and manages three-dimensional mapping packages. Blending statistical data with multilayered mapping, Carter & Burgess helps clients build accurate and easily manipulated databases for a variety of uses.



### CH2M HILL

9193 S. Jamaica Street  
Englewood, CO 80112  
USA

Phone: 720-286-5500  
Fax: 720-286-9821  
Web: [www.ch2mhill.com](http://www.ch2mhill.com)

#### Industry Categories

- Aviation
- Fleet Management
- Highways/Streets
- ITS/Traffic
- Maritime
- MVA/DMV (crashes)
- Railroads
- Transit

#### Type of Business Partner

- Corporate Alliance

#### Region

- Worldwide

CH2M HILL provides full-service transportation solutions for highway, bridge, airport, transit, and port and maritime projects. Its multidisciplinary resources include experts in the application of geospatial technologies, planning, engineering, architecture, seismic design, environmental sciences, technology, community relations, economics, construction, and program management. With more than 14,000 professionals in 200 offices worldwide, CH2M HILL applies GIS and related technologies in a local context to develop transportation solutions for its clients and their communities.



### Chambers Group, Inc.

17671 Cowan Avenue  
Irvine, CA 92614  
USA

Phone: 949-261-5414

Fax: 949-261-8950

Web: [www.chambersgroupinc.com](http://www.chambersgroupinc.com)

#### Industry Categories

- Aviation
- Highways/Streets
- Maritime
- Railroads
- Transit

#### Type of Business Partner

- Consultant

#### Region

- USA

Chambers Group, Inc., is a certified Disadvantaged Veteran Business Enterprise and a certified Small Business Enterprise. Established in 1978, Chambers Group provides interdisciplinary environmental consulting services to private business, industry, and government agencies. The company is headquartered in Irvine, California, with regional offices in Redlands and San Diego, California, and Reno, Nevada. It specializes in environmental impact assessment, natural and cultural resources management, planning, regulatory compliance, air quality, and GIS services.

#### Product Description

1. Environmental impact assessment—ArcGIS, ArcInfo: Determines the impact of a project
2. Cumulative route design—ArcGIS, ArcInfo, ArcGIS Spatial Analyst, ArcGrid™: Environmentally sensitive route choosing model
3. Right-of-way (ROW) analysis—ArcGIS, ArcInfo: Scientific survey to determine characteristics of ROW
4. Riparian and native restoration plans—ArcGIS, ArcInfo: Habitat restoration and management design



### Citilabs Inc.

312 Clay Street, #180  
Oakland, CA 94607  
USA

Phone: 510-663-5200

Fax: 510-645-1817

Web: [www.citilabs.com](http://www.citilabs.com)

#### Industry Categories

- Highways/Streets
- ITS/Traffic
- Railroads
- Transit

#### Type of Business Partner

- Advantage
- Developer

#### Region

- Worldwide

Citilabs Inc. is the world's largest developer of software solutions for the transportation industry. Well known for its legacy travel forecasting products, TRANPLAN, TP+, TRIPS, and VIPER, Citilabs' flagship product for transportation planning, Cube™, provides integrated functionality for urban and regional travel forecasting, regional and long-distance commodity flow forecasting, multimodal microsimulation, and land-use forecasting. Citilabs has offices in San Francisco, California; Washington, D.C.; London, England; and Singapore.

#### Product Description

Cube—ArcGIS: Brings passenger, freight, microsimulation, and land-use forecasting to ArcGIS users





### Civic Technologies, Inc.

1773 N. El Molino Avenue  
Pasadena, CA 91104  
USA

Phone: 626-398-9800  
Fax: 626-398-9825  
Web: [www.civictechnologies.com](http://www.civictechnologies.com)



### Coastal Environments, Inc.

1260 Main Street  
Baton Rouge, LA 70802-4657  
USA

Phone: 225-383-7455  
Fax: 225-383-7925  
Web: [www.coastalenv.com](http://www.coastalenv.com)

#### Industry Categories

- Highways/Streets
- Transit

#### Type of Business Partner

- Consultant

#### Region

- USA

Civic Technologies, Inc.'s MobilityDecision™ analyzes and predicts the transit potential of an area from the size of a neighborhood to a region and is used to identify, program, and plan streetscape and real estate development improvements that strengthen pedestrian linkages between neighborhoods and the bus stops and transit stations that serve them. Civic Technologies products and services empower decision makers to envision the future and manage the process to get there more quickly than ever.

#### Product Description

MobilityDecision—ArcGIS and ArcIMS: Customized application

#### Industry Categories

- Highways/Streets
- Railroads

#### Type of Business Partner

- Consultant
- Reseller

#### Region

- USA

Coastal Environments, Inc. (CEI), a full-service environmental and GIS firm based in Baton Rouge, Louisiana, offers the following GIS services to transportation-related projects: corridor analyses; project siting suitability modeling; and threatened and endangered species, wetlands, and cultural resource and ESA Phase I and II data collection and mapping for environmental assessments and impact statements. CEI utilizes the ArcGIS suite of programs, ArcSDE, and ArcIMS for geospatial analysis and data distribution and ArcPad for field data collection.

#### Product Description

Corridor Suitability model—ArcView and ArcGIS: Analysis of project data for assistance in corridor route selection



### CommunityViz

1035 Pearl Street, 3rd Floor  
Boulder, CO 80302  
USA

Phone: 303-442-8800  
Fax: 303-449-2487  
Web: [www.communityviz.com](http://www.communityviz.com)

#### Industry Categories

- Highways/Streets
- ITS/Traffic
- Railroads

#### Type of Business Partner

- Developer

#### Region

- USA

CommunityViz offers decision support software and consulting services that make the transportation planning process more visual, collaborative, and effective. Its state-of-the-art, GIS-based software allows users to create 2D and 3D representations of a location, enabling them to visualize and compare different alternatives and quantify their impacts. CommunityViz offers decision support software extensions for both ArcView and ArcGIS.

#### Product Description

1. Scenario 360™—ArcGIS 8.3 extension: Decision support software for 2D visualization and quantitative analysis of alternatives
2. SiteBuilder 3D™ for ArcGIS—ArcGIS extension: Visualization software for producing photorealistic 3D scenes from 2D map data
3. ModelBuilder™ 3D—ArcView 3.x and ArcGIS 8.3 extension: Software for generating 3D models of buildings, vegetation, and other real-world objects
4. CommunityViz Suite v. 1.4—ArcView 3.2 or 3.3 extension: Decision support software for 2D and 3D visualization and quantitative analysis of alternatives
5. Scenario Constructor—ArcView 3.2 or 3.3 extension: Decision support software for 2D visualization and quantitative analysis of alternatives
6. SiteBuilder 3D for ArcView—ArcView 3.x extension: Visualization software for producing photorealistic 3D scenes from 2D map data
7. Consulting services—ArcView 3.2 or 3.3 and ArcGIS 8.3: Consulting on projects utilizing CommunityViz software



### CompassCom, Inc.

6770 S. Dawson Circle, Unit 1A  
Centennial, CO 80112-4224  
USA

Phone: 303-680-3221  
Fax: 303-766-2488  
Web: [www.compasscom.com](http://www.compasscom.com)

#### Industry Categories

- Fleet Management
- ITS/Traffic
- Transit

#### Type of Business Partner

- Developer
- Reseller

#### Region

- Worldwide

CompassCom, Inc., is a product and service provider for global positioning system, geographic information system, E-911 mapping, and automatic vehicle location markets. CompassCom's solutions are designed to meet the needs of fleet management and transit agencies by providing mobile asset tracking, improving incident response, enhancing network interoperability, reducing voice radio traffic, and increasing data sharing.

#### Product Description

CompassWorks—MapObjects: Mobile asset tracking software



### con terra GmbH

24 Martin-Luther-King-Weg  
Muenster D-48155  
Germany

Phone: 49-251-74740

Fax: 49-251-7474100

Web: [www.conterra.de](http://www.conterra.de)

#### Industry Categories

- Maritime

#### Type of Business Partner

- Developer

#### Region

- Europe

con terra GmbH is one of the most successful ESRI business partners in Germany. Together with the companies CSC Ploenzke AG and ESRI Geoinformatik GmbH, con terra has developed WaGIS, the Waterway GeoInformation System for all inland waterways in Germany. WaGIS is an information gateway that regulates the spatial data infrastructure within the German waterway and shipping administration. In terms of a geodata warehouse, WaGIS unites the individual systems of the separate authorities.

#### Product Description

WaGIS—ArcGIS (especially ArcSDE): Waterway GeoInformation System, gateway and spatial data infrastructure



### CSC Ploenzke AG

Ubierstrasse 94  
Bonn D-53173  
Germany

Phone: 49-228-838-5576

Fax: 49-228-838-5555

Web: [www.cscploenzke.com](http://www.cscploenzke.com)

#### Industry Categories

- Maritime

#### Type of Business Partner

- Developer

#### Region

- Europe

CSC Ploenzke AG is a world leader in IT, systems integration, consulting, and outsourcing with knowledge of GIS. CSC established GIS as a strategic technology within its service portfolio at many subsidiaries such as those in the United Kingdom, Germany, and other countries. CSC offers a wide range of GIS services including consulting, benchmarking, implementation, administration, controlling, and project management. A special focus is set on the interface of GIS with workflow, document management, data warehouse, and enterprise resource planning (ERP) systems such as SAP. In the transportation industry, CSC helped develop WaGIS, for example. It manages all waterway-related information (e.g., sluices, bridges, parcels, water gauges, and depth sounding) in a multiuser, multilocation environment for up to 10,000 users. In addition, it integrates data from several alphanumeric databases.

#### Product Description

WaGIS—ArcSDE, MapObjects, and ArcView: A waterways information system

**DCSE, Inc.**

95 Argonaut  
Aliso Viejo, CA 92656-4133  
USA

Phone: 949-465-3400  
Fax: 949-586-8141  
Web: www.dcse.com

**Industry Categories**

- Aviation
- Fleet Management
- Highways/Streets
- ITS/Traffic
- Maritime
- MVA/DMV (crashes)
- Railroads
- Transit

**Type of Business Partner**

- Developer
- Reseller

**Region**

- Worldwide

DCSE, Inc., is a software engineering firm specializing in innovative solutions for the public sector. Core product and service offerings include the development, implementation, deployment, and integration of software tools using GIS technology from ESRI. DCSE's capabilities include deploying Web-based portals and accessing large-scale relational databases, ESRI software-based GIS, and especially tools utilizing Microsoft's .NET technology.

**Product Description**

1. Mapplet.NET—ArcIMS, ArcMap, ArcGIS, and ArcSDE: Accesses data and documents across the enterprise using a .NET GIS enterprise application
2. MapLibrary—ArcIMS, ArcMap, ArcGIS, and ArcSDE: Shares thematic maps and as-built drawings within the enterprise

**Deighton Associates Ltd.**

112 E. King Street  
Bowmanville, Ontario L1C 1N5  
Canada

Phone: 905-697-2644  
Fax: 905-697-2645  
Web: www.deighton.com

**Industry Categories**

- Highways/Streets

**Type of Business Partner**

- Developer

**Region**

- Africa
- Asia Pacific
- Canada
- Europe
- USA

A street data collection utility was developed using ArcStudio for use with a pocket PC running ArcPad. Several devices concurrently collect pavement surface condition and inventory data for the city and county of Denver Street Maintenance Division. Data synchronization is performed before it is imported into the Deighton Associates Ltd. Total Infrastructure Management System for analysis.

**Product Description**

Streets data collection utility—ArcPad: Pavement surface condition rating



### Destiny Resources, Inc.

1658 Cole Boulevard, Suite 205  
Golden, CO 80401  
USA

Phone: 303-232-6515  
Fax: 303-232-6818  
Web: [www.destinyresources.com](http://www.destinyresources.com)



### Digital Engineering Corporation

125 Cathedral Street  
Annapolis, MD 21401  
USA

Phone: 410-295-3333  
Fax: 410-295-3418  
Web: [www.digitalcorp.com](http://www.digitalcorp.com)

#### Industry Categories

- Transit

#### Type of Business Partner

- Corporate Consultant

#### Region

- USA

Destiny Resources, Inc., offers detailed GIS needs assessments and requirements documentation, detailed mapping and analysis, database design and development, data loading and standardization, project launch or acceleration, GIS service center development and outsourced solutions, and custom programming—VB, VBA, ARC Macro Language (AML™), Avenue™, ArcXML™, Java™, JavaScript™, HTML, and ASP. The company also provides services such as Web site development—public information and data sharing and Web-based mapping (ArcIMS), custom training, and temporary staffing—short-term, start-up, and specialist GIS support.

#### Product Description

Consultants—ArcGIS and ArcIMS: Customized application development

#### Industry Categories

- Highways/Streets
- Railroads
- Transit

#### Type of Business Partner

- Developer

#### Region

- Worldwide

Digital Engineering Corporation is a GIS solutions company specializing in application development and consulting services. Digital Engineering has been providing consulting services and commercial products to federal, state, and local governments, as well as private agencies, for more than 18 years. Digital Engineering is an ESRI-authorized developer and an Oracle Business Alliance Member. It provides products for redistricting, transportation, emergency management/homeland security, and automated conflation.

#### Product Description

1. ConfleX™: Provides intelligent automated conflation technology for road networks, points, and areas
2. E-MAPS (Emergency Management Analysis and Planning System): Provides automated evacuation routes and road closures





### Earth Tech, Inc.

4135 Technology Parkway  
Sheboygan, WI 53083  
USA

Phone: 864-234-8937

Fax: 920-458-8771

Web: [www.earthtech.com](http://www.earthtech.com)

#### Industry Categories

- Aviation
- Fleet Management
- Highways/Streets
- ITS/Traffic
- Maritime
- MVA/DMV (crashes)
- Railroads
- Transit

#### Type of Business Partner

- Corporate Consultant

#### Region

- Worldwide

Earth Tech, Inc., is a global provider of water management, engineering, environmental, transportation, construction, and information technology services. Earth Tech has worked with ESRI since 1984 and currently engages in a corporate consultant business partnership. Through that partnership, Earth Tech uses the full suite of ESRI products to support clients' diverse GIS needs. Earth Tech has implemented ESRI GIS solutions for federal, defense, municipal, utility, and industrial markets.

#### Product Description

Earth Tech builds information management and decision support systems that incorporate all of ESRI's products, as appropriate, to the goals of the project.



### Edwards and Kelcey

299 Madison Avenue  
Morristown, NJ 07962-1936  
USA

Phone: 973-267-0555

Fax: 973-267-3555

Web: [www.ekcorp.com](http://www.ekcorp.com)

#### Industry Categories

- Highways/Streets
- ITS/Traffic
- Railroads
- Transit

#### Type of Business Partner

- Corporate Consultant

#### Region

- Latin America
- USA

Edwards and Kelcey (EK) is an engineering, planning, consulting, and construction management firm serving clients worldwide. EK provides new and exciting GIS services and technologies. EK's systems integration team has developed custom applications in ArcInfo, ArcView, ArcPad, MapObjects, Visual Basic®, Windows® CE, and C++. EK has extensive experience in all aspects of software development with applications in real-time environments, embedded systems, and GIS. EK has developed intelligent transportation system software by extending ArcGIS functionality.

#### Product Description

Streets data collection utility—ArcPad: Pavement surface condition rating



### EI Technologies, LLC

19750 E. Parker Square Drive  
Parker, CO 80134  
USA

Phone: 720-851-1717

Fax: 720-851-5550

Web: [www.eitek.com](http://www.eitek.com)

#### Industry Categories

- Highways/Streets
- Transit

#### Type of Business Partner

- Developer
- Reseller

#### Region

- USA

EI Technologies, LLC, has developed a custom application, Cartographic Editing and Map Production System (CAMPS), that integrates easily in the ArcGIS 8 environment. The firm has added new modules specifically designed for the geodatabase model. The application enhances user productivity by simplifying the generation of scaled maps in a production environment. It also improves an organization's ability to produce digital maps by taking the guesswork out of map production. These modules have been developed to ensure a faster return on investment (ROI) by getting GIS up and running more quickly, helping to satisfy customers.

#### Product Description

1. CAMPS Migration Module—ArcGIS: Migrates multiple CAD, coverages, or shape-files into the geodatabase
2. CAMPS Editing Module—ArcGIS: Assists in attribute editing as well as provides additional coordinate geometry (COGO)-based tools for feature editing



### Electrical Systems Consultants Inc.

212 W. Mulberry Street  
Fort Collins, CO 80521  
USA

Phone: 970-224-9100

Fax: 970-224-9137

Web: [www.electsys.com](http://www.electsys.com)

#### Industry Categories

- Fleet Management

#### Type of Business Partner

- Consultant
- Developer
- Reseller

#### Region

- USA

Electrical Systems Consultants Inc. (ESC) provides integrated automated vehicle location systems and location-based services to the energy industry. ESC provides hardware and software solutions from multiple AVL and computer vendors and ESRI. ESC specialties include integration with outage management systems, dynamic truck map displays, and ArcGIS products.

#### Product Description

1. Cloudberry AVL—ArcGIS: Digital truck maps
2. Cloudberry AVL software—MapObjects: Vehicle tracking software
3. Cloudberry AVL—ArcPad: Truck maps



### Empower Decision Systems Inc.

1000 Evening Star Court  
Irving, TX 75063  
USA

Phone: 972-401-0919  
Fax: 972-401-0719  
Web: [www.empowersys.com](http://www.empowersys.com)

#### Industry Categories

- Fleet Management

#### Type of Business Partner

- Reseller

#### Region

- Canada
- Europe
- Latin America
- USA

Empower Decision Systems Inc.'s FleetChief™ fleet operations management system was developed using ESRI's MapObjects and seamlessly interfaces with ArcLogistics Route to allow vehicle routing and scheduling over real street networks, optimal allocation of vehicles and drivers to tasks, dynamic dispatching and redispaching, real-time GPS tracking and driver messaging, in-vehicle mapping and driving directions, electronic driver duty logs, vehicle data collection and telemetry, in-vehicle printing and document scanning, vehicle and driver performance measurement, and comparison of planned to actual routes.

#### Product Description

FleetChief—MapObjects, ArcLogistics Route: Integrated fleet operations management system



England, Thims & Miller, Inc.

### England, Thims & Miller, Inc.

14775 St. Augustine Road  
Jacksonville, FL 32258  
USA

Phone: 904-642-8990  
Fax: 904-646-9485  
Web: [www.etminc.com](http://www.etminc.com)

#### Industry Categories

- Aviation
- ITS/Traffic
- Maritime
- Railroads

#### Type of Business Partner

- Consultant
- Reseller

#### Region

- Worldwide

England, Thims & Miller, Inc., is a multidisciplined engineering and consulting firm with a focus on enterprise GIS implementations. Services provided include data collection; data conversion; custom IMS application development; software installation and configuration; and geodatabase modeling and development compliant with the spatial data standards for facilities, infrastructure, and the environment. Custom IMS applications are developed using ESRI's ArcIMS and Macromedia's ColdFusion software, integrating spatial data with data stored in any relational database management system.

#### Product Description

Consulting services



### EnTempus Inc.

3110 Pinewood Lane  
Alexandria, MN 56308-4717  
USA

Phone: 302-763-9697  
Fax: 302-763-5560  
E-mail: bday@entempus.com  
Web: www.entempus.com

#### Industry Categories

- Railroads

#### Type of Business Partner

- Consultant
- Reseller

#### Region

- USA

EnTempus Inc. specializes in providing environmental management information systems (EMIS) for rail and other environmentally at-risk transportation industries. These solutions include environmental database management systems for analytical and geotechnical environmental data tied to a project site GIS using ArcView and ArcView 3D Analyst™, a field data collection system for collecting environmental data using ArcPad installed on a PDA, and a Web-enabled “live” environmental data map using ArcIMS and the firm’s flagship project and enterprise management system, EMIS Explorer.

#### Product Description

1. TerraBase with ArcView extension: Industry-standard environmental data management
2. EnTer with ArcPad: Field data collection utility
3. EMIS Explorer with ArcIMS: Web-enabled data and project management



### ESEA

100 W. El Camino Real, Suite 74  
Mountain View, CA 94040-2664  
USA

Phone: 650-962-1167  
Fax: 650-962-0976  
Web: www.esea.com

#### Industry Categories

- Aviation
- Fleet Management
- Highways/Streets
- ITS/Traffic
- Maritime
- MVA/DMV (crashes)
- Railroads
- Transit

#### Type of Business Partner

- Developer

#### Region

- Worldwide

ESEA, a leader in GIS data integration/conflation technologies, offers MapMerger™, a software extension of ArcGIS. MapMerger provides tools for automatically matching, aligning, and conflating two different map representations of the same region. Transportation agencies are using MapMerger to cost-effectively maintain street centerline maps. MapMerger allows companies to quickly bring updated vendor street centerline maps into alignment with agency data and, thus, keep the street centerline maps current. This technology provides a solution for the transportation industry to maintain accurate street centerline maps at a relatively low cost. ESEA also provides conflation and data conversion services to its GIS customers.

#### Product Description

MapMerger—A software extension of ArcGIS



### Europa Technologies Ltd.

79 Claygate Lane  
Esher, Surrey KT10 0BQ  
United Kingdom  
  
Phone: 44-20-8398-3955  
Fax: 44-20-8398-3915  
Web: [www.europa-tech.com](http://www.europa-tech.com)

#### Industry Categories

- Aviation
- Fleet Management
- Highways/Streets
- ITS/Traffic
- Maritime
- Railroads
- Transit

#### Type of Business Partner

- Publisher

#### Region

- Worldwide

Europa Technologies Ltd. is a leading digital map data manufacturer specializing in international and global mapping. The company has a range of data products for use in transportation applications including asset tracking, fleet management, and aviation/maritime information systems. Reference products include global roads, railroads, airports, ports, and time zones (including daylight saving time).

#### Product Description

Global Insight Plus—ArcData™: Global reference map



### Explorer Graphics Ltd.

Geographic Information Center  
P.O. Box 58031  
Whitby, Porirua  
Wellington, 6025  
New Zealand  
  
Phone: 0064-4-2347832  
Fax: 0064-4-2347863  
Web: [www.egl.co.nz](http://www.egl.co.nz)

#### Industry Categories

- Aviation

#### Type of Business Partner

- Developer

#### Region

- Asia Pacific
- Worldwide

Explorer Graphics Ltd. (EGL) consultants represent a team almost without parallel in terms of GIS expertise and practical experience in ESRI technology. EGL has recently completed production of a national series of aeronautical charts covering all of New Zealand at a variety of map scales. The derivation of charts from a single database is a revolutionary approach to aeronautical chart production, and the New Zealand aviation industry believes that these charts are among the best in the world. EGL was awarded first place in the Best Cartographic Design: Map Series or Atlas category at the 2003 ESRI International User Conference in San Diego, California. EGL offers services in support of any organization involved with all aspects of aeronautical charting.

#### Product Description

Aeronautical charting services including production, implementation, and support using ArcGIS and Production Line Tool Set for ArcGIS (PLTS™)—Aeronautical Solution.





### Ferranti Computer Systems N.V.

Noorderlaan 111  
B-2030, Antwerp  
Belgium

Phone: +32-3-540-4911  
Fax: +32-3-542-6328  
Web: [www.ferranti.be](http://www.ferranti.be)

#### Industry Categories

- Fleet Management
- ITS/Traffic

#### Type of Business Partner

- Developer
- Systems Integrator

#### Region

- Europe

Ferranti Computer Systems N.V. (FCS) offers innovative market-leading technologies and services to increase reliability for public transport, provide real-time information wherever it is needed, and optimize the effectiveness and efficiency of the mobile workforce.

Ferranti Computer Systems is the perfect partner for the supply of real-time passenger information systems, management information systems, mobile workforce planning systems, vehicle priority systems at traffic lights, and system integration within the markets of (public) transport and road management.

#### Product Description

1. FCS Transport Enterprise Solutions—ArcView and ArcObjects: Assigning routes and trigger boxes for event servers in (emergency) vehicles, fleet tracking, and calculation of estimated time of arrival for public transport
2. FCS workforce planning—NetEngine and MapObjects: Generating geographically optimized routes to carry out scheduled visits for meter reading, parcel service, and asset management



### First Gate Ventures

1218 Faithful Street  
Victoria, BC V8V 2R7  
Canada

Phone: 250-661-4844  
Fax: 250-370-0106  
Web: [www.firstgateventures.com](http://www.firstgateventures.com)

#### Industry Categories

- Aviation
- Fleet Management
- Maritime
- Railroads
- Transit

#### Type of Business Partner

- Developer

#### Region

- Asia Pacific
- Canada
- Europe
- USA

First Gate Ventures' EDiT (Electronic Dispatch) Solution goes far beyond traditional tracking applications by providing the features necessary to enable complete fleet management and dispatch functionality. The firm's applications are tailored to the specific needs of its clients and developed on ESRI components that allow the rapid deployment of customized dispatch and command and control systems as well as secure integration into existing maintenance, inventory, and billing systems.

#### Product Description

EDiT—MapObjects and ArcIMS: Fleet management and enterprise LBS integration



### FoundOnEarth

448 Traverso Avenue  
Los Altos, CA 94022-1124  
USA

Phone: 650-947-9811  
Fax: 650-949-5381  
Web: [www.foundonearth.com](http://www.foundonearth.com)

#### Industry Categories

- Highways/Streets
- ITS/Traffic
- Railroads
- Transit

#### Type of Business Partner

- Consultant

#### Region

- USA

FoundOnEarth specializes in the development of integrated spatial information analysis and management GIS systems, databases, customized GIS applications, and decision support systems. The company enhances the analytical and visualization strength of GIS with simulation models and statistical software interfaces. FoundOnEarth uses ESRI's ArcGIS suite of software and ArcView 3.x to provide GIS services in support of transportation system infrastructure planning, construction, and management projects; development of GIS-based transportation network models; and travel information systems analysis.

#### Product Description

1. Intelligent transportation networks—ArcGIS: Development, analytical tools
2. Transportation modeling and planning—ArcGIS: Development, analytical tools
3. Travel demand modeling—ArcGIS: Development, analytical tools



### Future Concepts

1230 Arrow Highway, Building B  
La Verne, CA 91750  
USA

Phone: 909-593-6705  
Fax: 909-596-3234  
Web: [www.futurec.net](http://www.futurec.net)

#### Industry Categories

- Highways/Streets
- ITS/Traffic
- Maritime
- Railroads
- Transit

#### Type of Business Partner

- Developer

#### Region

- Canada
- Europe
- USA

Future Concepts is an OEM innovator in the application of new technology within the first responder emergency management market. It designs, develops, and manufactures computer hardware systems, as well as custom software solutions, which are integrated into vehicles, trailers, or emergency operations centers. Future Concepts' customer base is composed of local, state, and federal law enforcement agencies, fire departments, public utilities, etc. Its goal is to provide tools that can help save lives.

**GAF AG**

Arnulfstr 197  
Munich 80634  
Germany

Phone: 49-89-121528-0  
Fax: 49-89-121528-27  
Web: [www.gaf.de](http://www.gaf.de)

**Industry Categories**

- Highways/Streets
- Maritime
- Railroads

**Type of Business Partner**

- Consultant
- Developer

**Region**

- Africa
- Asia Pacific
- Europe
- Latin America
- Middle East

GAF AG, a private sector enterprise founded in 1985, began by providing services centered on earth observation satellite data, which was soon combined with information system technology. Today, GAF offers a broad range of applications, ranging from geodata procurement (satellite, DEM, land-use, and land cover data), image processing and analysis, information processing, and software development to the provision of turnkey technical assistance projects and customized spatial land management and monitoring systems.

**Product Description**

1. IPE—ArcGIS: Adds a toolbar to ArcGIS for the integration of three different data-bases: projects, emergencies, and highway inventory data (Peru)
2. CR-PE—ArcGIS: Adds two toolbars to ArcGIS, route calibration and interactive placement of events

**GBA Master Series, Inc.**

10561 Barkley Place, Suite 500  
Overland Park, KS 66212  
USA

Phone: 800-492-2468  
Fax: 913-341-3128  
Web: [www.gbamasterseries.com](http://www.gbamasterseries.com)

**Industry Categories**

- Fleet Management
- Highways/Streets
- ITS/Traffic
- MVA/DMV (crashes)

**Type of Business Partner**

- Consultant
- Developer

**Region**

- USA

GBA Master Series, Inc. (GBAMS), is positioned as a total solutions provider of infrastructure management products and services for public works and water resources agencies. Designed by civil engineers for local governmental agencies, the GBA Master Series suite includes applications designed for complete management needs with regard to sanitary and storm sewers, water distribution systems, streets and pavements, fleet, and equipment. In addition, the software allows these agencies to take advantage of extensive functionality, including capabilities for work order management, customer complaint and service request tracking, parts and materials inventory control, preventive maintenance scheduling, and GIS mapping and spatial analysis. GBAMS is an ESRI business partner in the development of GIS-related software applications and a reseller of ESRI GIS software products, and it was recognized by ESRI with the 2002 Business Partner of the Year Award. GBAMS and ESRI are dedicated to improving the infrastructure management capabilities of local government agencies through enterprise GIS systems.

**Product Description**

GBA Master Series software—ESRI GIS software: Enterprise GIS systems



### Gecko Microsystems, Inc.

822 E. Union Hills Drive, Suite 2-301  
Phoenix, AZ 85024  
USA

Phone: 800-390-7520  
Fax: 602-788-2611  
Web: [www.geckoms.com](http://www.geckoms.com)

#### Industry Categories

- Transit

#### Type of Business Partner

- Developer

#### Region

- Canada
- USA

Gecko Microsystems, Inc., provides software for school district transportation departments. Product functions include field trip administration, Web-based field trip requests, GIS-based routing, employee management, student conduct referrals, and payroll assistance.

#### Product Description

Transportation Operations Manager GIS routing—Uses ArcView 3.x for map viewing: GIS-based school bus routing



### Geo Imaging Consulting, Inc.

1330 U Street NW, Suite 301  
Washington, DC 20009  
USA

Phone: 202-265-3413  
Fax: 202-265-3412  
Web: [www.geo-imaging.com](http://www.geo-imaging.com)

#### Industry Categories

- Highways/Streets
- ITS/Traffic
- MVA/DMV (crashes)
- Transit

#### Type of Business Partner

- Consultant

#### Region

- Africa
- USA

Geo Imaging Consulting, Inc., is an 8a Certified Local Small Disadvantaged Business Enterprise providing GIS services to government agencies and businesses. Geo Imaging's staff is trained and experienced in GIS technologies and has been involved in the GIS industry for more than 20 years. Its professional GIS solutions involve needs assessment, database design and development, Web-based GIS application development, data conversation, and digitization.

#### Product Description

TSA—ArcIMS: Creation of a project management system utilizing a Web-based GIS interface



### GeoAnalytics Inc.

1716 Fordem Avenue  
Madison, WI 53704  
USA

Phone: 608-241-7100  
Fax: 608-241-7116  
Web: [www.geoanalytics.com](http://www.geoanalytics.com)

#### Industry Categories

- Fleet Management
- Highways/Streets
- MVA/DMV (crashes)

#### Type of Business Partner

- Consultant
- Developer
- Reseller

#### Region

- USA

GeoAnalytics Inc. is an IT consulting firm that specializes in the planning, design, and implementation of custom, enterprise-level information systems to support spatial data analysis and decision-making needs. Providing leading-edge services to both the public and private sectors, GeoAnalytics offers unique technical capabilities and expertise in land records, homeland security, transportation, business geographics, and environmental management.

#### Product Description

PV WEB: Extension to ArcIMS that provides enhanced capabilities for map viewing, query, analysis, and printing



### GeoDecisions

207 Senate Avenue  
Camp Hill, PA 17011  
USA  
Phone: 717-763-7211  
Fax: 717-763-8150  
Web: [www.geodecisions.com](http://www.geodecisions.com)

#### Industry Categories

- Fleet Management
- Highways/Streets
- ITS/Traffic
- Maritime
- MVA/DMV (crashes)
- Railroads
- Transit

#### Type of Business Partner

- Corporate Consultant
- Reseller

#### Region

- USA

GeoDecisions has a solid reputation in the transportation industry for providing innovative consulting services and customized solutions in a timely and cost-effective manner. GeoDecisions offers clients extensive industry knowledge of day-to-day transportation operations and its vast expertise with technology tools used in the transportation market such as GIS, linear referencing system (LRS), database, and application development products. These are complemented by a proven methodology for conducting strategic planning and application development projects, using strong project management principles.

#### Product Description

1. Strategic and implementation planning
2. Requirements definition
3. Database design and development
4. Custom application development and product training
5. Web and wireless solutions



### Geonetics, Inc.

77 Summer Street, 3rd Floor  
Boston, MA 02110  
USA  
Phone: 617-896-4400  
Fax: 617-896-4401  
Web: [www.geonetics.com](http://www.geonetics.com)

#### Industry Categories

- Aviation
- Fleet Management
- Highways/Streets
- ITS/Traffic
- MVA/DMV (crashes)
- Railroads
- Transit

#### Type of Business Partner

- Consultant

#### Region

- Canada
- Europe
- Latin America
- USA

Geonetics, Inc., a Boston-based AM/FM/GIS implementation, integration, custom applications development firm, has been providing expert management consulting and software engineering services to transportation, utility, and environmental organizations since 1995.



### GeoNorth, LLC

921 S.W. Washington, Suite 777  
Portland, OR 97205  
USA

Phone: 503-827-0827

Fax: 503-827-0735

Web: [www.geonorth.com](http://www.geonorth.com)

#### Industry Categories

- Fleet Management
- Highways/Streets
- ITS/Traffic
- MVA/DMV (crashes)
- Railroads
- Transit

#### Type of Business Partner

- Corporate Consultant
- Developer
- Reseller
- Trainer

#### Region

- Worldwide

GeoNorth, LLC, is a full-service Internet, GIS, and database solutions provider.

GeoNorth plans, develops, implements, and integrates systems to search, display, analyze, publish, and maintain tabular and spatial data.

GeoNorth offers a full range of consulting and design services including strategic planning, needs analysis, conceptual design, implementation planning, project planning and management, data modeling and database design, pilot projects, application development, database/data warehouse development, network engineering, data conversion, e-commerce, training, application maintenance, and technical support.

#### Product Description

1. MapOptix™—ArcIMS: MapOptix is a companion product to ArcIMS for implementing and managing Internet mapping applications, GIS portals, and Web-based enterprise GIS systems quickly, easily, and cost-effectively without custom programming.
2. QueryPal™—ArcView 9.x: QueryPal is an extension to ArcMap for seamless querying of GIS features and external databases (e.g., permitting, billing, facilities, assessment).

## Geoplan Opus

### Geoplan Opus Consultants Inc.

919 Prospect Street  
Fredericton, New Brunswick, E3B 2T7  
Canada

Phone: 506-451-0055

Fax: 506-450-4838

Web: [www.geoplanopus.ca](http://www.geoplanopus.ca)

#### Industry Categories

- Highways/Streets
- ITS/Traffic
- MVA/DMV (crashes)

#### Type of Business Partner

- Consultant

#### Region

- Canada
- USA

Geoplan Opus Consultants Inc.'s extensive experience, knowledge, and skill in highway design, traffic engineering, transportation planning, and geomatics are recognized nationally and internationally. To round out its specialized services, Geoplan Opus also provides industry-leading expertise in transportation asset management consulting, economic analysis, and strategic planning services. Since 1988, municipalities, government departments, and corporations have relied on Geoplan Opus for consultation services, project management, and innovative problem solving.

#### Product Description

1. GPS Layer Updater—ArcGIS: Updates DOT road layers using GPS points
2. RLD Tool—ArcGIS: Creates route sections for direct loading into Exor's Network Manager (NM3)



## GEVAS Software Systementwicklung und Verkehrsinformatik GmbH

Leuchtenberggring 20  
Muenchen D-81677  
Germany

Phone: 49-892-55597-0  
Fax: 49-892-55597-66  
Web: www.gevas.de

### Industry Categories

- Highways/Streets
- ITS/Traffic

### Type of Business Partner

- Developer

### Region

- Europe

GEVAS Software Systementwicklung und Verkehrsinformatik GmbH is a software and system company based in Munich, Germany (with a branch in Linz, Austria), offering software solutions and services for traffic management, traffic planning, traffic control, and geographic information systems. In addition, the company offers mobility management, technical, and scientific consulting services. For more than 20 years, it has been working on behalf of public authorities, transport services, and business customers. National and European Union research projects are also an important part of its work.

### Product Description

1. LAGIS/öv—ArcGIS: GIS-based information and management system for public transport
2. LAGIS/imz—ArcIMS: Internet information system for urban and rural areas
3. IGLZ—ArcSDE and ArcIMS: Core modules of an integrated traffic management center



## gINT Software

7710 Bell Road  
Windsor, CA 95492  
USA

Phone: 707-838-1271  
Fax: 707-838-1274  
Web: www.gcagint.com

### Industry Categories

- Highways/Streets

### Type of Business Partner

- Developer

### Region

- Worldwide

gINT® Software provides geoenvironmental and geotechnical software for fully customizable borehole/boring and well logs, fence diagrams, geotechnical testing, and other professional engineering reports. With more than 5,000 licenses in 43 countries and a 17-year track record of success, gINT geoenvironmental and geotechnical software sets the industry standard and is the product of choice for numerous transportation authorities, government agencies, and leading civil engineering firms.

### Product Description

gINT for ArcGIS: Adds a toolbar to ArcGIS to access gINT subsurface geotechnical/geoenvironmental data





### GIS Solutions, Inc.

2612 Farragut Drive  
Springfield, IL 62704  
USA

Phone: 217-546-3635

Fax: 217-546-3839

Web: [www.gis-solutions.com](http://www.gis-solutions.com)

#### Industry Categories

- Highways/Streets
- ITS/Traffic
- MVA/DMV (crashes)
- Railroads
- Transit

#### Type of Business Partner

- Consultant
- Developer
- Reseller

#### Region

- USA

GIS Solutions, Inc., is a full-service GIS company providing leading-edge GIS services and products. GIS Solutions specializes in system planning, design, implementation, and custom application development with ESRI technology. GIS Solutions is an industry leader in transportation GIS with more than 10 years of experience in developing transportation applications. The company has a proven track record in managing and organizing information related to roadway inventories, bridges, railroad crossings, road construction, and various programming and planning projects.

#### Product Description

1. Snowplow application: Custom development in ArcGIS or ArcIMS
2. Routing application: Custom development in ArcGIS or ArcIMS



### GlobeXplorer, LLC

3021 Citrus Circle, Suite 150  
Walnut Creek, CA 94598  
USA

Phone: 925-280-8765

Fax: 925-280-8760

Web: [www.globexplorer.com](http://www.globexplorer.com)

#### Industry Categories

- Aviation
- Fleet Management
- Highways/Streets
- ITS/Traffic
- Transit

#### Type of Business Partner

- Developer
- Publisher
- Reseller

#### Region

- Worldwide

GlobeXplorer, LLC, is a leading geographic data integration and publishing company providing online access to the world's largest commercial library of georeferenced digital aerial imagery. The company's image library is distributed over the Internet directly into ESRI mapping software. Using its proprietary delivery platform, GlobeXplorer provides fast and affordable access to aerial images and associated database content to thousands of businesses and consumers on a daily basis.

#### Product Description

GlobeXplorer's ImageConnect™ extension for ArcWeb™ Services, ArcIMS, and ArcGIS instantly delivers the world's largest online archive of georeferenced aerial imagery into mapping projects with the push of a button.



### Gray Hill Solutions, Inc.

4500 9th Avenue NE, Suite 330  
Seattle, WA 98105-4737  
USA

Phone: 206-633-6083  
Fax: 206-633-6088  
Web: [www.grayhillsolutions.com](http://www.grayhillsolutions.com)

#### Industry Categories

- Fleet Management
- Highways/Streets
- ITS/Traffic
- Transit

#### Type of Business Partner

- Consultant

#### Region

- Asia Pacific
- Canada
- USA

Gray Hill Solutions, Inc. (GHS), creates and implements GIS solutions for asset and transportation management. GHS is currently completing a Section 508-compliant real-time traffic Web site for the Bay Area's 511 System (<http://traffic.511.org>) utilizing its Glimpse™ engine (incorporating ArcSDE and ArcIMS) and an implementation of BusSpeak™, its transit on-time performance and signal priority analysis system (<http://www.grayhillsolutions.com/products/busspeak.htm>). Current implementations also include one for BusSked™, an engine for Section 508-compliant interactive GIS-based transit schedule Web sites and for Olympia's Intercity Transit.

#### Product Description

1. Glimpse—ArcSDE and ArcIMS: Implements a map-based, real-time traffic information Web site
2. BusSpeak—ArcIMS: Tracks on-time performance of transit vehicles
3. BusSked—ArcIMS: Implements an interactive transit schedule Web site



### Greenman-Pedersen, Inc.

100 Corporate Drive, Suite 205  
Lebanon, NJ 08833  
USA

Phone: 908-236-9001  
Fax: 908-236-9669  
Web: [www.gpinet.com](http://www.gpinet.com)

#### Industry Categories

- Highways/Streets
- Transit

#### Type of Business Partner

- Consultant
- Reseller

#### Region

- USA

Greenman-Pedersen, Inc., is a consulting engineering firm with a specialty in creating asset management and GIS solutions. It is experienced in creating solutions for clients in ArcGIS, MapObjects, and ArcIMS.

#### Product Description

1. Sign management—ArcGIS: Stores and manages traffic sign data
2. Videolog—ArcGIS: Digital video log interface
3. Bicycle maps—ArcGIS: Displays bicycle roadway safety data



**G R E S H A M  
S M I T H   A N D  
P A R T N E R S**

### Gresham, Smith and Partners

1400 Nashville City Center  
Nashville, TN 37219  
USA

Phone: 615-770-8100  
Fax: 615-770-8189  
Web: [www.gspnet.com](http://www.gspnet.com)

#### Industry Categories

- Aviation
- Highways/Streets
- ITS/Traffic
- Railroads
- Transit

#### Type of Business Partner

- Consultant

#### Region

- USA

Gresham, Smith and Partners (GS&P) is focused on providing its clients with high-order GIS services and cutting-edge applications. It integrates GIS technology into transportation planning, design, and engineering projects to help ensure that its clients' needs are met intelligently and efficiently. By utilizing the breadth of experience of its GIS professionals, engineers, and architects, GS&P is able to offer superior quality services to its clients at all stages of a project.

#### Product Description

1. Consulting
2. GIS services



### GRW Aerial Surveys, Inc.

801 Corporate Drive  
Lexington, KY 40503  
USA

Phone: 859-223-3999  
Fax: 859-219-9059  
Web: [www.grwinc.com](http://www.grwinc.com)

#### Industry Categories

- Highways/Streets
- Maritime
- Railroads

#### Type of Business Partner

- Consultant

#### Region

- USA

GRW Aerial Surveys, Inc., is a full-service aerial photography, digital orthophotography, surveying, mapping, and GIS company providing solutions to transportation clients across the United States. It routinely offers these services to transportation disciplines including highways, railroads, and waterways. Its parent company, GRW Engineers, provides transportation planning and design services for a wide variety of clients including the Kentucky DOT.



### Haestad Methods

37 Brookside Road  
Waterbury, CT 06708  
USA

Phone: 203-755-1666  
Fax: 203-597-1488  
Web: [www.haestad.com](http://www.haestad.com)

#### Industry Categories

- Highways/Streets

#### Type of Business Partner

- Developer
- Reseller

#### Region

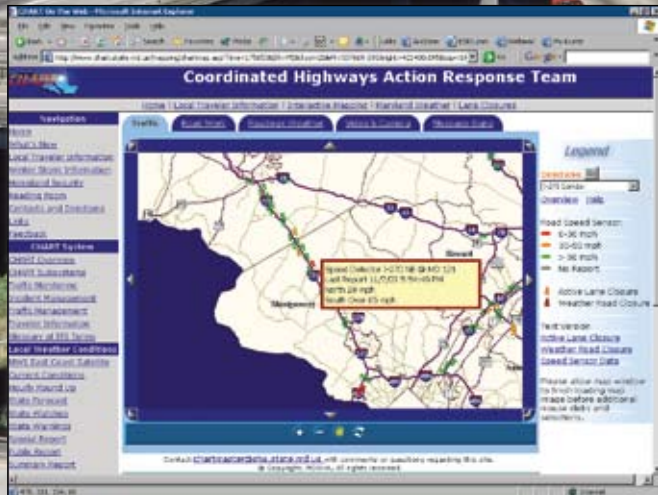
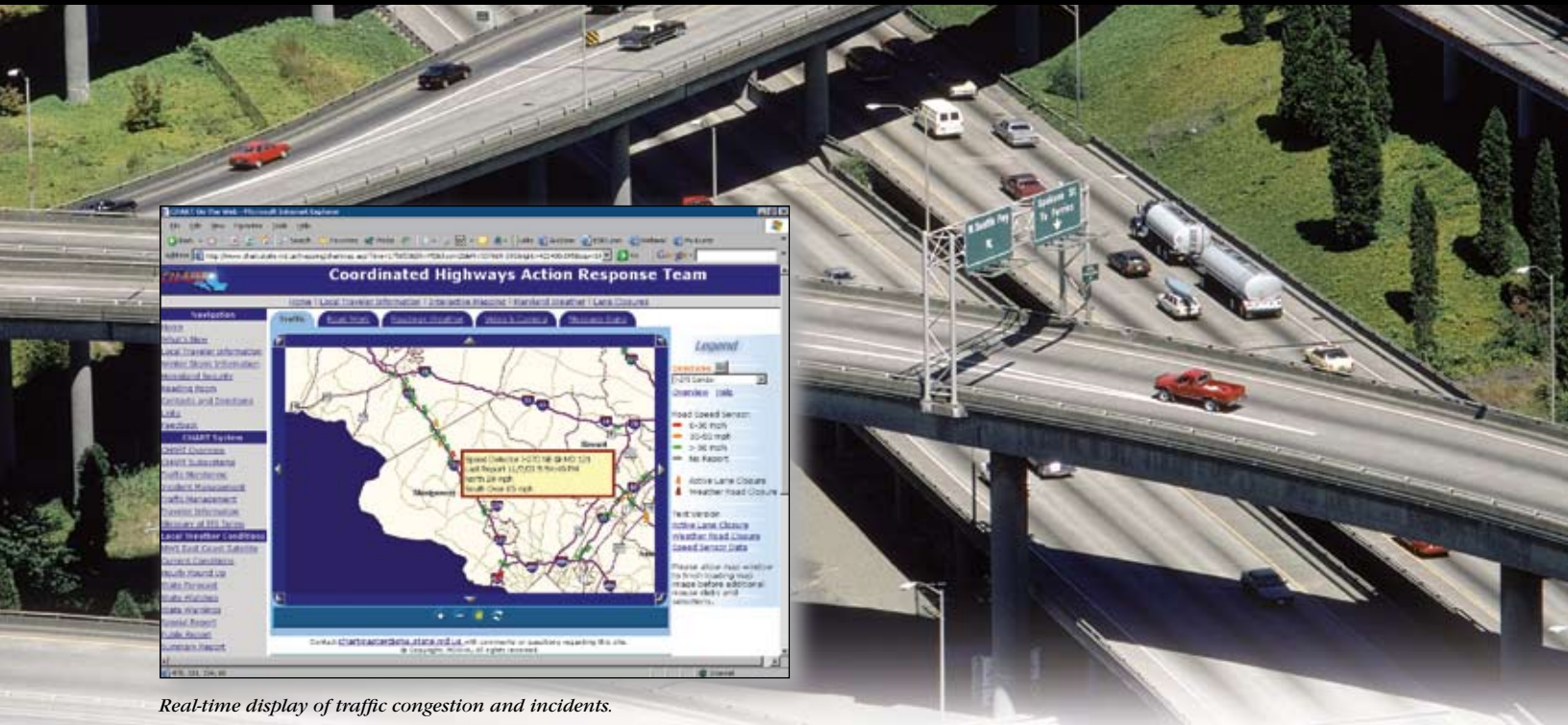
- Worldwide

Haestad Methods is the world's leading water resources software company. Its more than 130,000 civil engineers in 170 countries provide hydrologic and hydraulic modeling solutions.

#### Product Description

StormCAD—ArcGIS: Storm sewer analysis, design, mapping, management, and planning

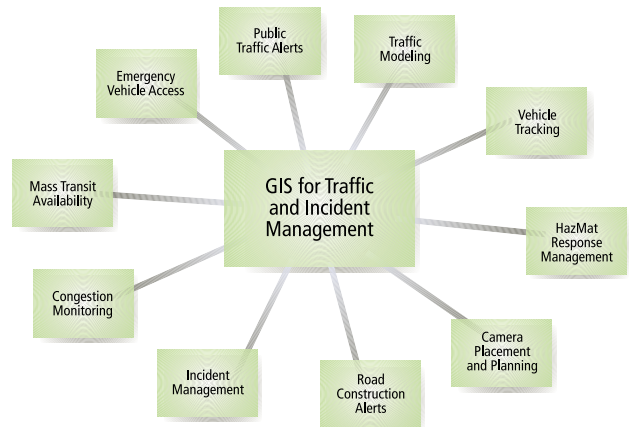
# What Kind of Traffic Information Do You Need to Map?



Real-time display of traffic congestion and incidents.



Traffic congestion growth and incident trend analysis.



Information can be an expensive asset to acquire. Why try to capture it twice? Advanced geographic or spatial data systems can store and retrieve information in a format useful for various types of employees. Incident managers need an immediate display of events as they happen. Analysts need to see seasonal and longer term trends through multivariate, time series analyses. Geographic information system (GIS) technology allows a single geodatabase to serve both types of users. Call ESRI to learn more about GIS and traffic management.

Do you need help making your information system spatial?  
Contact our transportation team at **1-888-603-3218**.



**ESRI**—The GIS Company™

E-mail: [info@esri.com](mailto:info@esri.com)

[www.esri.com/transportation](http://www.esri.com/transportation)



# ArcGIS Transportation Data Model

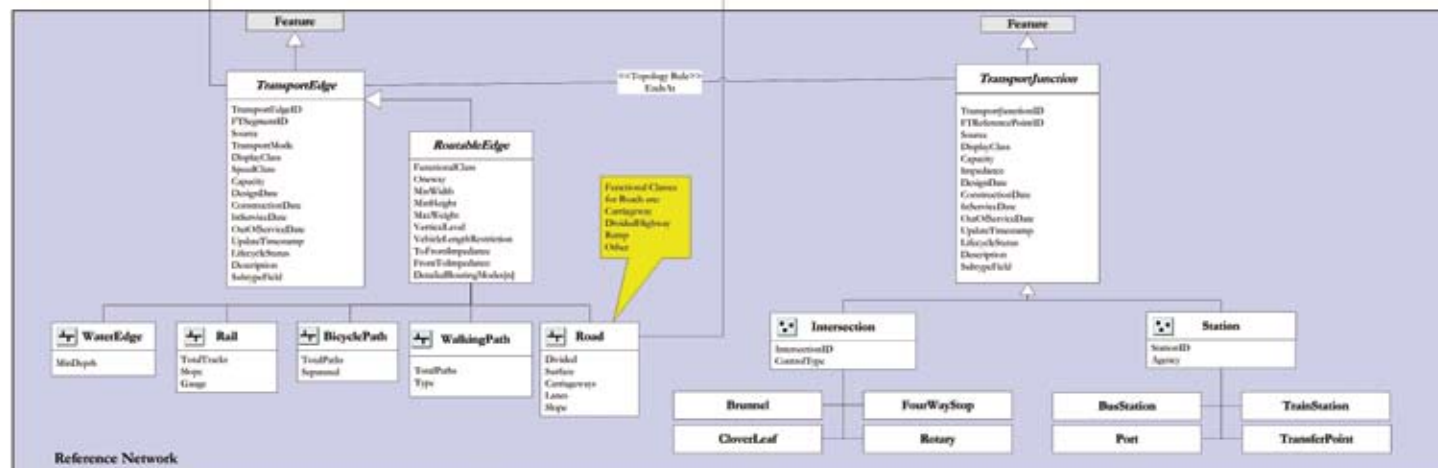
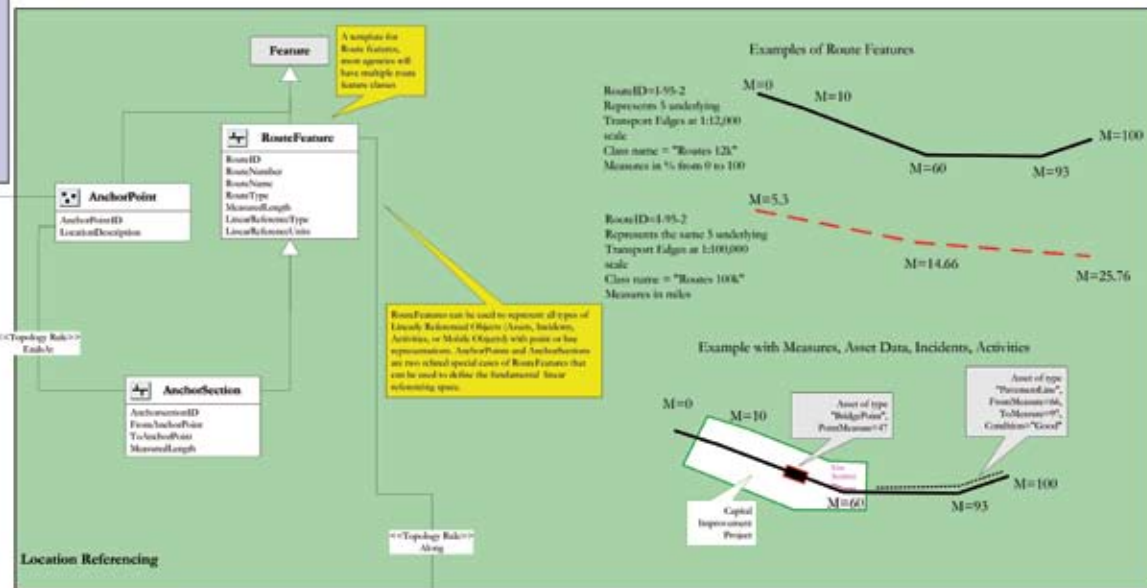
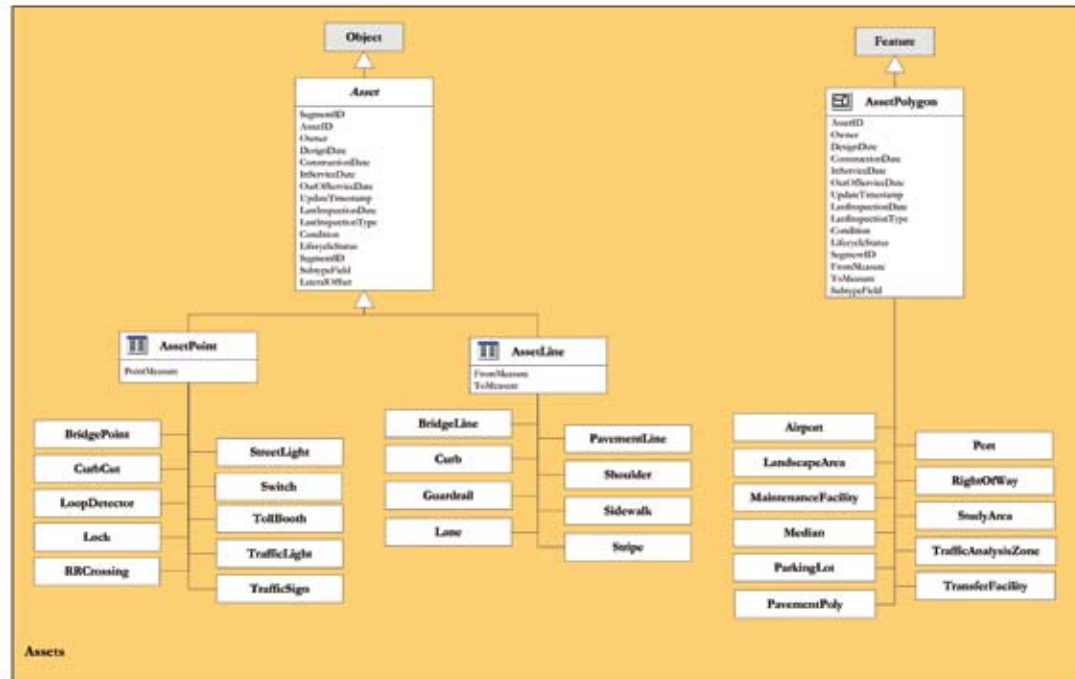
Developed by UNETRANS Consortium

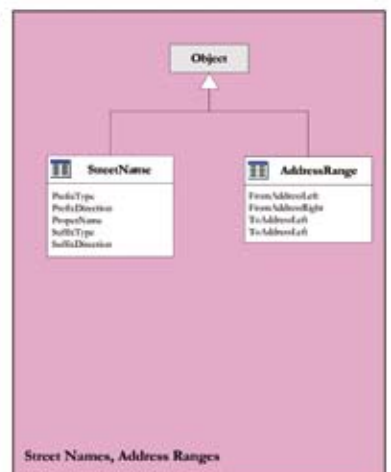
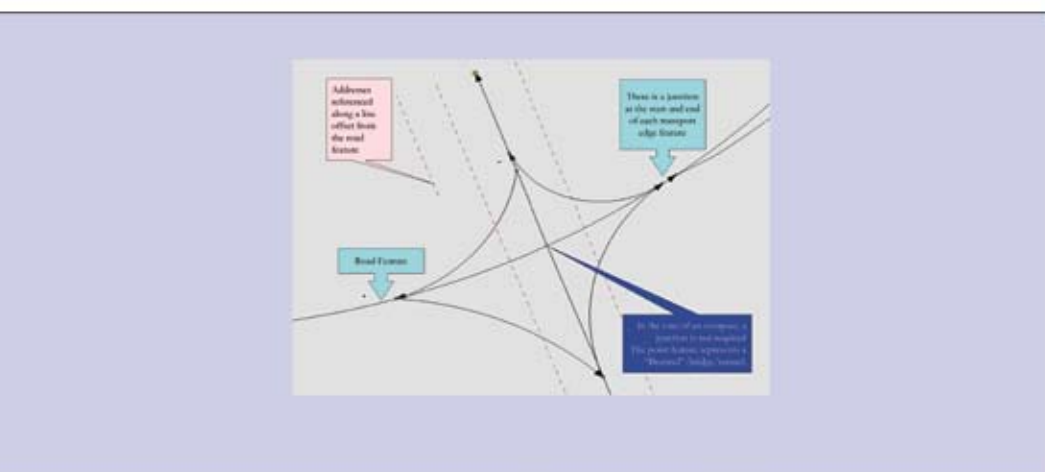
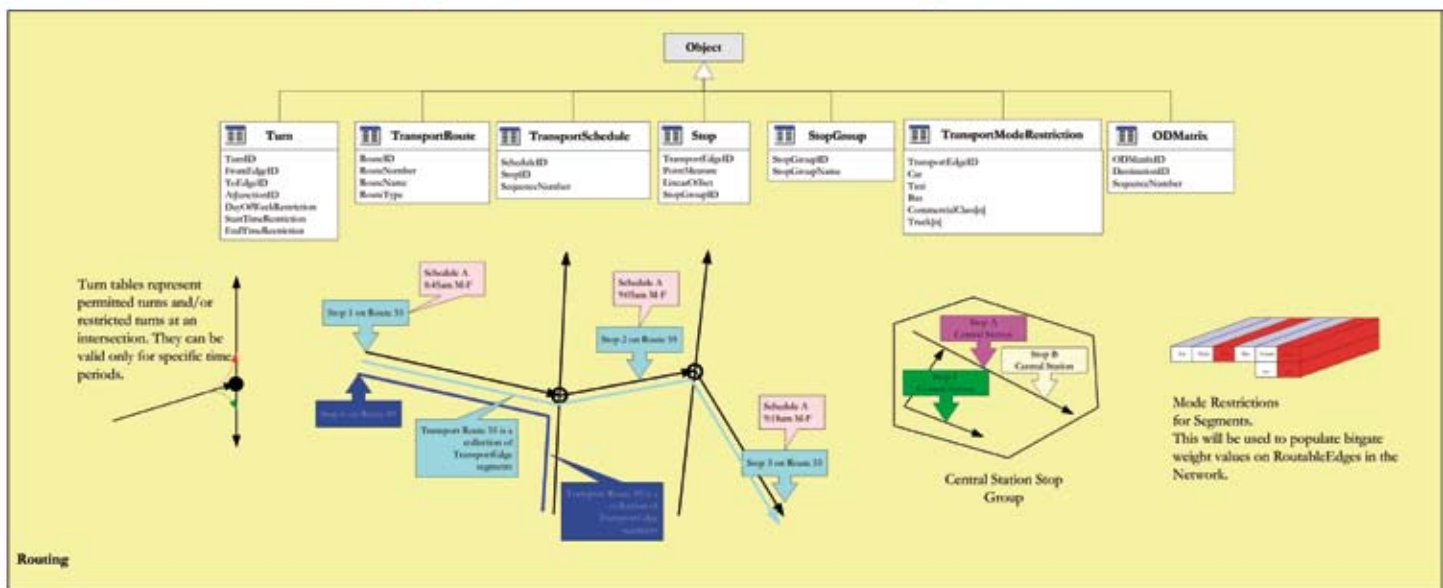
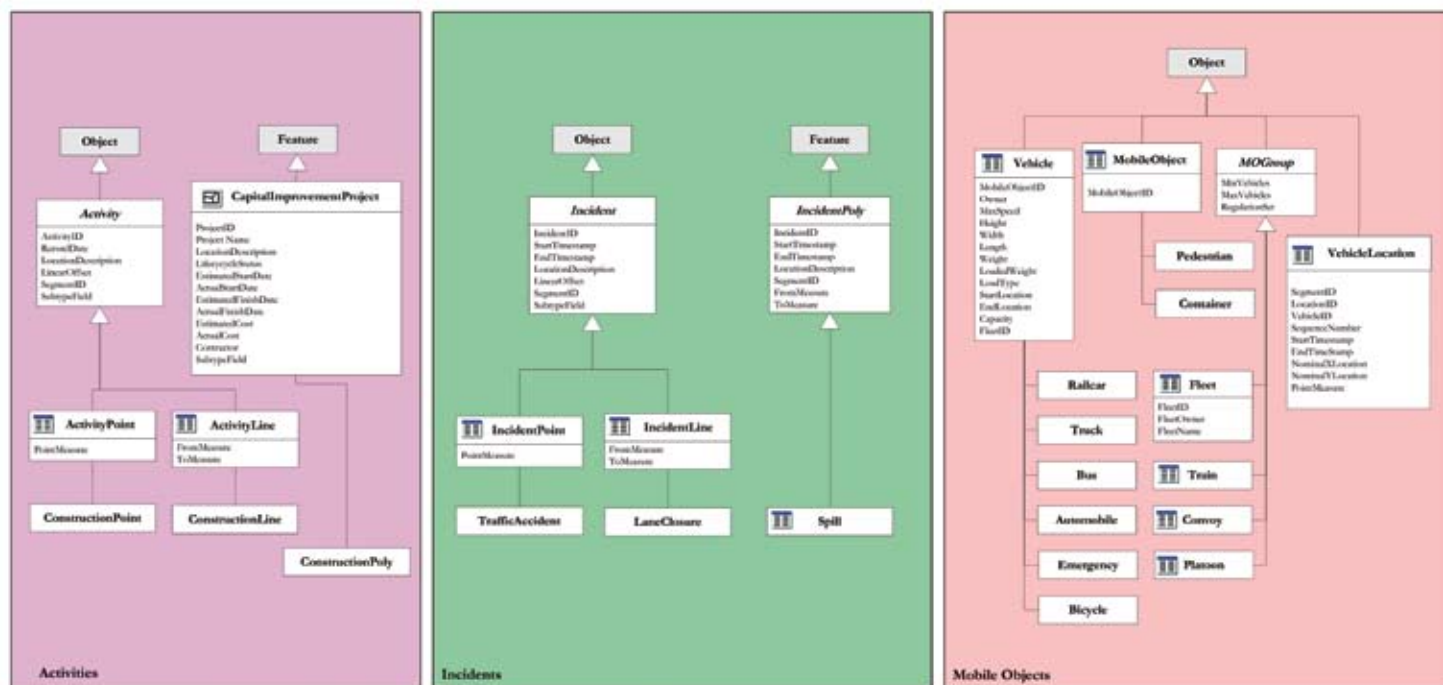
UNETRANS Data Model was updated for the ArcGIS 8.3 release on August 19, 2003.

Visit ESRI's Web site at  
[www.esri.com/industries/transport/unetrans.html](http://www.esri.com/industries/transport/unetrans.html)

To get future version updates, more information,  
 and download these documents:

- UNETRANS Design Templates
- UNETRANS Case Studies
- Data Model Tips and Tricks

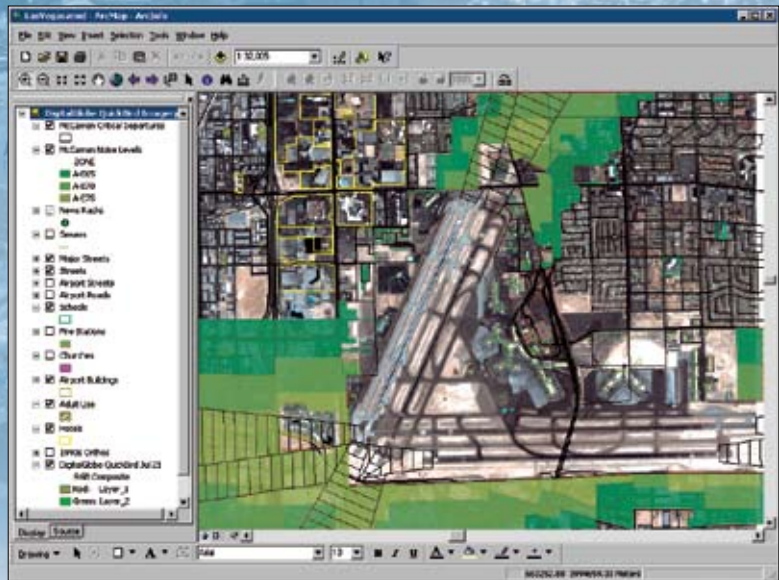




# Do You Include Regional Geography in Your Capacity and Environmental Planning?



Mobile workers bring GIS data with them as they inspect and maintain airport facilities.



Airport analysts integrate map and image data to build information-rich displays about their airport facility and surrounding community.

Intelligent growth requires thorough planning and forecasting. Gaining the funding necessary to implement airport growth and maintenance plans is a highly scrutinized and competitive process. Airport executives are discovering that geographic information system (GIS) technology is an excellent means of creating detailed plans to meet future requirements. The visualization capabilities of GIS also provide powerful tools for explaining and justifying these plans to the public and elected officials.

ESRI is the world leader in GIS software. Call us today to learn more about how GIS is being used at airports.

## AIRPORTS USE GIS TO

- ▶ Manage Property and Leaseable Space
- ▶ Model and Monitor Noise
- ▶ Analyze Runway Pavement
- ▶ Study Access and Security Breaches
- ▶ Map and Coordinate Flight Paths
- ▶ Plan Facility Expansion and Renovation
- ▶ Support Community Relations



**ESRI**—The GIS Company™

E-mail: [info@esri.com](mailto:info@esri.com)

1-888-603-3218

[www.esri.com/transportation](http://www.esri.com/transportation)





### Hansen Information Technologies Inc.

1745 Markston Road  
Sacramento, CA 95825-4026  
USA

Phone: 916-921-0883

Fax: 916-921-6620

Web: [www.hansen.com](http://www.hansen.com)

#### Industry Categories

- Fleet Management
- Highways/Streets
- Railroads
- Transit

#### Type of Business Partner

- Developer
- Reseller

#### Region

- USA

Hansen Information Technologies Inc. is the world's leading provider of ERP applications that help manage the daily operations of federal, state, and local governments. Hansen provides complete solutions for customer service, asset, land, and work order management; utility billing; and financials and fully integrates ESRI ArcGIS and MapObjects technologies with its GIS solutions. Hansen's transportation modules provide best-of-breed linear referencing and segmented data models for roadway, railway, streets, and pavement analysis.

#### Product Description

1. GeoAdministrator—ArcGIS extension: Simultaneously creates, edits, and updates both spatial features and Hansen inventory records from ArcMap
2. GeoAssistant—ArcGIS extension: Map display, query, and linking of spatial features to Hansen's inventory record from ArcMap
3. Integrated Map Viewer—MapObjects: Map display and query application embedded within the Hansen user interface



### HDR Engineering Inc.

315 E. Robinson Street, Suite 400  
Orlando, FL 32801  
USA

Phone: 407-420-4200

Fax: 407-420-4242

Web: [www.hdrinc.com](http://www.hdrinc.com)

#### Industry Categories

- Aviation
- Highways/Streets
- ITS/Traffic
- Railroads
- Transit

#### Type of Business Partner

- Corporate Consultant

#### Region

- Latin America
- USA

HDR Engineering Inc. delivers GIS expertise with the full range of architecture and engineering services in more than 90 offices in the United States. Transportation GIS services include NEPA studies, long-range planning, traffic modeling, ITS, and asset management.

#### Product Description

1. Wetland Mitigation Monitor—ArcPad: Tracks the success of wetland plantings
2. Soil Technician—ArcPad: Automates soil density testing for new construction
3. PSTools—ArcGIS: Planner/Scheduler for asset maintenance management
4. PSToolPad—ArcPad: Maintenance work order manager for field crews
5. Stormwater Structure Cataloger—ArcPad: Collects roadway drainage structure attributes for NPDES storm water pollution permits
6. Conflict Avoidance Manager—ArcIMS: Identifies and resolves multiagency roadway construction conflicts



## Hewlett-Packard

300 Capitol Mall, Suite 100  
Sacramento, CA 95814  
USA

Phone: 916-403-1534  
Fax: 916-403-1555  
Web: [www.hp.com/go/gov](http://www.hp.com/go/gov)

### Industry Categories

- Aviation
- Fleet Management
- Highways/Streets
- ITS/Traffic
- MVA/DMV (crashes)
- Transit

### Type of Business Partner

- Corporate Alliance

### Region

- Worldwide

Today's state and local government environment is complex, unpredictable, and filled with IT challenges. A tough economic climate and budgetary shortfalls often make it necessary to cut services or increase taxes and fees. At the same time, citizens are demanding more from their cities, counties, and states. The Hewlett-Packard (HP) state and local government line of business focuses on delivering technologies that help keep communities safer, streamline the business of government, and provide services to citizens.

### Product Description

HP has the products, services, solutions, and partnerships to help cities and states provide a service level that was previously unattainable including secure wireless applications.



## HNTB Corporation

715 Kirk Drive  
Kansas City, MO 64105  
USA

Phone: 816-472-1201  
Fax: 816-472-4075  
Web: [www.hntb.com](http://www.hntb.com)

### Industry Categories

- Aviation
- Highways/Streets
- ITS/Traffic
- Railroads
- Transit

### Type of Business Partner

- Corporate Consultant

### Region

- Worldwide

By teaming award-winning planners and engineers with its technology experts, HNTB Corporation is helping clients integrate GIS solutions to successfully solve complex problems. As a nationally ranked architecture, engineering, and planning firm, HNTB provides sophisticated solutions to clients in the aviation, construction, environmental, transportation, urban planning, and municipal sectors. HNTB merges its national technical expertise, local understanding of the issues, and technology capabilities to develop the most effective GIS solutions.

### Product Description

1. North Texas Toll Authority Enterprise GIS—ArcIMS, ArcSDE, and ArcGIS: Suite of Web-based and desktop tools for tollway data management and distribution
2. Transportation Monitoring System (TMS)—ArcGIS: Customized interfaces for MPO regional data management and map production
3. DataTrax—MapObjects: Custom tools for railway agency GIS data and asset management
4. Atlanta Hartsfield International Airport Enterprise GIS—ArcIMS, ArcSDE, and ArcGIS: Suite of tools for aviation data management and distribution
5. AirPave™—ArcView: GIS-based pavement management and maintenance system, aviation oriented
6. ISITE—ArcGIS: Intelligent transportation systems asset management tools
7. Forward US 54—ArcIMS: Roadway corridor public involvement  
Web site: [www.forward54.org](http://www.forward54.org)



IBM

1133 Westchester Avenue  
White Plains, NY 10604  
USA

Phone: 800-IBM-4-YOU  
Web: [www.ibm.com](http://www.ibm.com)

#### Industry Categories

- Aviation
- Fleet Management
- Highways/Streets
- ITS/Traffic
- Maritime
- MVA/DMV (crashes)
- Railroads
- Transit

#### Type of Business Partner

- Developer

#### Region

- Worldwide

IBM is the world's largest technology company, with more than 300,000 employees. With consultants and professional staff in more than 160 countries, IBM® Business Consulting Services is the world's largest consulting services organization, delivering integrated, flexible, and resilient processes—across companies and through business partners—that enable clients to benefit from the on-demand business model by saving money and transforming their organizations to be more competitive and deliver bottom-line business value.

#### Product Description

1. IBM DB2® Information Management—ArcGIS: Enables the storage, retrieval, and manipulation of both spatial and attribute data in both IBM DB2 UDB and Informix® relational databases
2. IBM DB2 Spatial Extender—ArcSDE: Seamless integration with ESRI tools, Open Geospatial Consortium, Inc.-compliant, spatial indexing for superior performance, and industry-leading scalability and reliability across multiple platforms
3. IBM Spatial Integration Adapter for WebSphere® Studio—ArcGIS Server: Development environment for enterprise GIS implementations
4. IBM WebSphere Everyplace® Access-Location Access Services—ESRI ArcWeb Services: Easily incorporate ESRI Web services to add spatial information to enterprise applications
5. IBM WebSphere Application Server—ArcGIS: Superior developer productivity and flexibility of an open, portal-like integration of ESRI technology



### ICF Consulting, Inc.

9300 Lee Highway  
Fairfax, VA 22031-1207  
USA

Phone: 703-934-3000  
Fax: 703-934-3974  
Web: [www.icfconsulting.com](http://www.icfconsulting.com)

#### Industry Categories

- Aviation
- Highways/Streets
- ITS/Traffic
- Maritime
- Railroads
- Transit

#### Type of Business Partner

- Consultant
- Developer

#### Region

- Worldwide

ICF Consulting, Inc., is a leading transportation, technology, and policy-consulting firm. Drawing upon extensive industry knowledge, distinguished professionals, and innovative analytics, the firm develops solutions to complex transportation, energy, environment, and social issues. ICF's approach to these issues is strengthened by its expertise in spatial analysis, information technology, program management, and communications. ICF maintains several full-service GIS labs across the nation staffed with expert consultants in spatial analysis, cartography, application development, geodatabase design, data conversion, and Web-based mapping.

#### Product Description

1. Consulting—ArcGIS, ArcSDE, ArcIMS: On- or off-site technical consulting
2. Geodatabase design: Personal or enterprise-wide data modeling
3. Conversion—ArcGIS and ArcSDE: IS data conversion from virtually any source
4. Programming and modeling—All ESRI products: Customized spatial application development
5. Cartography—ArcGIS: Customized mapping solution



### IDELIX Software, Inc.

555-1122 Mainland Street  
Vancouver, BC V6B 5L1  
Canada

Phone: 604-656-6300  
Fax: 604-656-6310  
Web: [www.idelix.com](http://www.idelix.com)

#### Industry Categories

- Aviation
- Fleet Management
- Highways/Streets
- ITS/Traffic
- Maritime
- Railroads
- Transit

#### Type of Business Partner

- Developer

#### Region

- Canada
- USA

Pliable Display Technology (PDT) by IDELIX Software, Inc., is a data visualization software that provides users with a revolutionary way of viewing and interacting with data. The PDT Software Development Kit can be easily integrated by OEMs and system integrators as an enhanced user interface to meet the challenge of working with complex two- and three-dimensional information within the spatial limits of a display screen. With end users reporting more than 20 percent productivity gains, PDT provides a demonstrable ROI.

#### Product Description

1. PDT—ArcGIS: Adds PDT visualization user interface for detail-in-context viewing and data interaction
2. PDT Web Map Client—ArcIMS: Client to access data from ArcIMS and effectively work with multilayer datasets



### ImageNet Venture LLC

64 E. Uwchlan Avenue, Suite 426  
Exton, PA 19341  
USA

Phone: 610-594-6585

Fax: 610-594-0884

Web: [www.imagenetus.com](http://www.imagenetus.com)

#### Industry Categories

- ITS/Traffic

#### Type of Business Partner

- Advantage

#### Region

- USA

ImageNet Venture LLC is a document imaging and management company that allows users of its DocSTAR software to link their paper documents to the information that is contained in their GIS system. Users have instant one-touch access to all their necessary data.

#### Product Description

DocSTAR™/ESRI link—ArcIMS: Provides augmented GUI tool for ArcIMS, supporting the use of paper documents stored in the document management system



### IMAPS LLC

207 N. Main, Suite 213  
Columbia, IL 62236  
USA

Phone: 866-707-6277

Fax: 618-281-0644

Web: [www.imaps.cc](http://www.imaps.cc)

#### Industry Categories

- Aviation
- Fleet Management
- Maritime

#### Type of Business Partner

- Consultant
- Developer

#### Region

- Europe
- USA

IMAPS LLC is experienced at providing new ways to look at data. For airplane and boat navigation, IMAPS created highly popular navigation planning tools in which the pilot can create a “trip tick” to gather all the required information into one convenient package including maps and special restrictions on the proposed trip. For new challenges, IMAPS, using ESRI-developed software technology, can create unique solutions for other transportation-related projects for in-house or Web-related uses.



### INDUS Corporation

1953 Gallows Road, Suite 300  
Vienna, VA 22182  
USA

Phone: 703-506-6700

Fax: 703-506-6776

Web: [www.induscorp.com](http://www.induscorp.com)

#### Industry Categories

- Highways/Streets
- Railroads
- Transit

#### Type of Business Partner

- Developer
- Reseller

#### Region

- USA

INDUS Corporation is providing Web-based and standard mapping and database services for the Bureau of Transportation Statistics DOT. INDUS designed, implemented, and is improving Web-based mapping capabilities. This includes customization of ArcIMS using JavaScript and PHP. This includes the development of a PHP connector for ArcIMS and custom implementation of a PHP Viewer. INDUS created and is improving an intermodal freight facilities geodatabase and is improving the Geospatial One-Stop transportation portal.

#### Product Description

1. Dynamic Mapping/Transtats—ArcIMS: Allows visualization of geographic data generated by the statistical queries within TranStats
2. MATT—ArcGIS: Facilitates map production and tracking
3. IMFDB—ArcGIS: Updatable geodatabase of intermodal freight facilities



### Infinite Enterprises

4015 Clairemont Mesa Boulevard  
San Diego, CA 92117-2717  
USA

Phone: 858-272-2455  
Fax: 419-272-2455  
Web: [www.ielogistics.net](http://www.ielogistics.net)

#### Industry Categories

- Fleet Management

#### Type of Business Partner

- Consultant
- Developer
- Reseller

#### Region

- USA

Infinite Enterprises provides enhancements to ArcLogistics Route for application in various transportation market segments such as courier, paratransit, and health care; construction, lumber, beverage, and straight distribution; and technician routing.

#### Product Description

IE\_STREET\_EDITOR—ArcLogistics Route: Enables customization of street data networks



### InfoGeographics, Inc.

503 Hasting Street  
Traverse City, MI 49686  
USA

Phone: 231-995-8266  
Fax: 231-995-8267  
Web: [www.infogeographics.com](http://www.infogeographics.com)

#### Industry Categories

- Aviation
- Fleet Management
- Highways/Streets
- ITS/Traffic
- Maritime
- MVA/DMV (crashes)
- Railroads
- Transit

#### Type of Business Partner

- Reseller

#### Region

- Canada
- USA

InfoGeographics, Inc., is a GIS services and products company providing implementation consulting, application development, training, and on-site support, specializing in geodatabases, ArcSDE, and ArcIMS. GeoConnector™ is a stand-alone GIS publishing tool to merge and move geospatial and tabular data and automatically update data for GIS Web sites, applications, and services. GeoConnector is the premier solution to take the burden off vital staff to create and maintain data sources for key mission-critical applications.

#### Product Description

GeoConnector—All ESRI products: Automatically merges and publishes spatial and tabular data



### **INFORM—Network for Management Systems Limited**

958 West 8th Avenue, Suite 401  
Vancouver, BC V5Z 1E5  
Canada

Phone: 604-714-2850  
Fax: 604-733-0634  
Web: [www.informgis.com](http://www.informgis.com)

#### **Industry Categories**

- Highways/Streets
- ITS/Traffic

#### **Type of Business Partner**

- Developer

#### **Region**

- Canada
- USA

INFORM—Network for Management Systems Limited has two areas of transportation expertise: spatial road asset management systems (integration of ArcGIS and Maximo) and forest roads maintenance and data management. Its applications and business knowledge center on data maintenance tools, work order management, asset inventories, and maintenance scheduling within an ArcSDE/geodatabase and enterprise database (Oracle or SQL Server) environment.

#### **Product Description**

1. DMT—ArcGIS and ArcSDE: Data maintenance tools for spatial roads inventory
2. SWAMI—ArcGIS and ArcSDE: Scheduling and work order management system for roads maintenance
3. TheForestManager—ArcGIS and ArcSDE: Enterprise forest management application



### **Institute of Information Technology, Inc.**

2204 Timbeloch Place, Suite 225  
The Woodlands, TX 77380  
USA

Phone: 281-296-2224  
Fax: 281-296-2291  
Web: [www.e-iit.com](http://www.e-iit.com)

#### **Industry Categories**

- Fleet Management
- Highways/Streets
- Transit

#### **Type of Business Partner**

- Consultant
- Developer
- Reseller

#### **Region**

- Asia Pacific
- Canada
- Europe
- Latin America
- USA

The Institute of Information Technology, Inc. (IIT), specializes in the integration of GIS, AVL, and operations research technologies to provide comprehensive fleet management tracking and route/dispatch optimization solutions to improve the efficiencies of any organization with a strong focus on ROI or public safety improvements. Its offerings range from IIT-hosted solutions for small- to mid-sized companies to business partner developers using its routing engine to full enterprise deployment for Fortune 500 customers.

#### **Product Description**

1. eRouteLogistics™—ArcIMS: Web-based fleet routing (waste collection, periodic pickup/delivery) and scheduling with map display
2. eRouteTracker™—ArcIMS, MapObjects: Automatic vehicle location with Web server and MapObjects client
3. Facility Location Optimizer™—MapObjects: Stand-alone application to find optimal number of facilities and where to locate them





### International Mapping Associates Inc.

5300 Dorsey Hall Drive  
Ellicott City, MD 21042  
USA

Phone: 800-761-6944  
Fax: 443-367-0045  
Web: [www.ima-maps.com](http://www.ima-maps.com)

#### Industry Categories

- Transit

#### Type of Business Partner

- Reseller

#### Region

- USA

International Mapping Associates Inc. (IMA) offers custom map design, cartographic, and GIS services for the transportation industry. Services include design and production of systemwide route, route/timetable, locator, display, and down-town/area or regional maps; service charts; simplified maps for telephone directories; map adaptations for Americans with Disabilities Act; and bike routes. IMA's goal is to create maps that are accurate, attractive, and easy to use.

#### Product Description

Transit maps—ArcGIS: Creation of system maps, route maps, and timetables using ArcGIS for base data management



### IVU Umwelt GmbH

Burgweg 10  
Sexau 79350  
Germany

Phone: 49-764-153-046  
Fax: 49-764-153-047  
Web: [www.ivu-umwelt.de](http://www.ivu-umwelt.de)

#### Industry Categories

- Highways/Streets

#### Type of Business Partner

- Developer

#### Region

- Worldwide

IVU Umwelt GmbH develops software solutions in environmental planning. It integrates its models in ArcView and ArcGIS based on the spatial reference data used for environmental planning.

The IMMIS system combines various models for maintaining air quality including GIS integration and interfaces to traffic and noise models. EKatDyn manages dynamic emission inventories with which static emission sources can be linked with factors varying in time for an easy update of inventories.

#### Product Description

1. IMMISair—ArcView and ArcGIS: Performs GIS-based modeling of traffic-induced air pollution in cities
2. IMMISmonitoring—ArcView and ArcGIS: Performs citywide screenings of current air and noise pollution based on real-time traffic
3. EKatDyn—ArcView and ArcGIS: Manages dynamic street emission inventories



### James W. Sewall Company

136 Center Street  
P.O. Box 433  
Old Town, ME 04468  
USA

Phone: 207-827-4456  
Fax: 207-827-3641  
Web: [www.jws.com](http://www.jws.com)

#### Industry Categories

- Highways/Streets
- Maritime

#### Type of Business Partner

- Corporate Consultant

#### Region

- Canada
- Latin America
- USA

National GIS firm James W. Sewall Company offers services to the transportation industry in asset location and mapping, infrastructure management, and CAD-GIS integration. Sewall utilizes cost-effective photogrammetric methods to identify and locate assets accurately with minimal field operations. To help government agencies meet GASB 34 compliance, Sewall has integrated asset management software with infrastructure mapping, digital orthophotography, and other datasets in ArcGIS. Sewall has also developed canal monitoring applications and mapped utilities' ROW for vegetation management.

#### Product Description

1. Fish Net Filter—ArcObjects: Canal bottom contour generation for ArcGIS
2. Cut Volume—ArcScene™: Canal dredging estimation and analysis for ArcGIS



### Jones Edmunds & Associates, Inc.

730 NE Waldo Road  
Gainesville, FL 32641  
USA

Phone: 352-377-5821  
Fax: 352-377-3166  
Web: [www.jonesedmunds.com](http://www.jonesedmunds.com)

#### Industry Categories

- Fleet Management
- Highways/Streets
- Transit

#### Type of Business Partner

- Consultant
- Reseller

#### Region

- Latin America
- USA

Jones Edmunds & Associates, Inc., is a multidisciplinary consulting firm specializing in GIS solutions for transportation, public works, utilities, and the environment. The breadth and depth of its GIS Division coupled with its engineering expertise provide innovative yet down-to-earth solutions for its primarily city, county, and state clients.

#### Product Description

1. Asset management—Cityworks and ArcGIS: Asset, facility, and work order management solutions for transportation, public works, and utilities
2. Asset management—CarteGraph and ArcGIS: Asset, facility, and work order management solutions for transportation, public works, and utilities



### L. Robert Kimball & Associates

615 W. Highland Avenue  
Ebensburg, PA 15931  
USA

Phone: 814-472-7700  
Fax: 814-472-7712  
Web: [www.lrkimball.com](http://www.lrkimball.com)

#### Industry Categories

- Aviation
- Highways/Streets
- ITS/Traffic

#### Type of Business Partner

- Consultant

#### Region

- USA

L. Robert Kimball & Associates integrates the latest GIS and application development resources to enhance and streamline transportation projects. Since 1953, the company has combined its full-service, in-house mapping/surveying/GIS capabilities with engineering solutions to provide roadway and bridge design, airport planning and design, and environmental studies for transportation and planning agencies at the local, county, state, and federal levels. Kimball uses the ArcGIS suite of products for corridor analysis and to provide timely information at public meetings.



### Magnetek, Inc.

10900 Wilshire Boulevard, Suite 850  
Los Angeles, CA 90024  
USA

Phone: 310-689-1616

Fax: 818-400-8121

Web: [www.magnetekpower.com](http://www.magnetekpower.com)

#### Industry Categories

- Highways/Streets

#### Type of Business Partner

- Developer

#### Region

- Europe
- USA

i.Illumination Public Illumination Control Solution is part of Magnetek, Inc.'s HIQgrid™ Digital Control System. The solution monitors and controls lightbulbs used in public illumination along streets and highways. Remote control of lightbulbs includes turning on/off or dimming bulb and changing bulb frequency. Remote monitoring provides alerts when bulbs need replacement or when bulbs fail. All this takes place via the HIQgrid solution server that is in contact with every streetlight.

#### Product Description

i.Illumination—ArcGIS: Public illumination control solution



### Maptech, Inc.

10 Industrial Way  
Amesbury, MA 01913  
USA

Phone: 978-792-1085

Fax: 978-792-1091

Web: [www.maptech.com](http://www.maptech.com)

#### Industry Categories

- Aviation
- Highways/Streets
- Maritime
- Railroads

#### Type of Business Partner

- Developer
- Publisher
- Reseller

#### Region

- USA

Maptech, Inc., offers Terrain Navigator Pro, high-resolution USGS topo maps and aerial photos for use in ArcView 3.x and ArcGIS 8.x. Maptech also offers an ArcGIS extension that reads Maptech's topographic, nautical, DOQQ, and elevation model data directly from Terrain Navigator Pro—no format hassles!

#### Product Description

1. High-resolution topographic, nautical, and aerial maps for use in ESRI projects
2. Elevation models read directly in ArcGIS 3D Analyst



### MapVision Technologies Inc.

300 State Street, Suite 610  
Redlands, CA 92373  
USA

Phone: 909-798-4109

Fax: 909-798-9410

Web: [www.mapvision.com](http://www.mapvision.com)

#### Industry Categories

- Transit

#### Type of Business Partner

- Consultant

#### Region

- USA

MapVision Technologies Inc. is a consulting/development company covering GIS, transportation, energy, data maintenance, water/wastewater, and application development. MapVision develops applications with IMS, ArcGIS, ArcObjects, and MapObjects. Its services include GIS programming, digitizing, project management, concept development, data maintenance, design, planning, programming, documentation, training, and support. Its applications include trip itinerary engines, bus stop/landmark maintenance tools, and fast address geocoding engines (in use at Los Angeles County MTA). MapVision works with Linux and Microsoft.

#### Product Description

1. Bus stop/Landmark management tools—MapObjects, IMS: Data management tools
2. Geocoding engine—MapObjects: 16-millisecond response times
3. Trip Itinerary Planner—MapObjects, IMS: Provides transit trip plans



## Meteorlogix

11400 Rupp Drive  
Minneapolis, MN 55337  
USA

Phone: 952-882-4534  
Fax: 952-882-4500  
Web: [www.meteorlogix.com](http://www.meteorlogix.com)

### Industry Categories

- Aviation
- Fleet Management
- Highways/Streets
- ITS/Traffic
- MVA/DMV (crashes)
- Railroads

### Type of Business Partner

- Developer
- Reseller

### Region

- Worldwide

As a leading provider of weather services to state governments and a member of the National 511 Alliance, Meteorlogix brings best-of-class technology and processes to those managing state 511 and highway information management systems. Its flagship product suite, MxInsight Geospatial Systems, combines and compares past, present, and weather forecast information with individual road segments, allowing users to integrate weather data with their own operational maps and traffic information management operations, rest areas, and information kiosks. With Meteorlogix weather symbols graphically overlaying users assets—roads, highway patrol stations, DOT offices, etc.—users will get a complete picture of how the weather is affecting their operations and the travelers for whom they are responsible.

### Product Description

1. MxInsight RouteWatch™—Weather-alerting application utilizing ArcSDE and ArcGIS Engine: MxInsight RouteWatch is an automated monitoring and alerting system that continually compares individual segments within a transportation infrastructure with real-time and forecast weather conditions to generate and send alerts to those who need to know when severe weather is expected to affect the transportation system. Road Speed Index™ can also be generated to indicate expected traffic delays caused by weather conditions. MxInsight RouteWatch alerts can be sent in a variety of formats (XML, SMTP, SOAP, shapefiles, etc.) and can be specifically directed to recipients based on the type and/or location of the alert. MxInsight RouteWatch technology provides the weather component in several 511 transportation information systems.
2. MxInsight RailWatch™—Weather-alerting application utilizing ArcSDE and ArcGIS Engine: Similar to MxInsight RouteWatch, MxInsight RailWatch provides an automated monitoring and alerting system specifically for railroads to prevent derailments and delays caused by severe weather conditions.
3. MxAnalyst™—ArcView 9 weather analyst extension: Users can bring real-time, forecast, and recent historical weather data layers into their ArcView 9 environment for situational display capabilities and decision support analysis. Weather layers are delivered automatically to MxAnalyst as often as every five minutes.



### Michael Baker Corporation

2925 Layfair Drive  
Jackson, MS 39208-9507  
USA

Phone: 601-933-6200  
Fax: 601-933-6206  
Web: [www.mbakercorp.com](http://www.mbakercorp.com)

#### Industry Categories

- Fleet Management
- Highways/Streets
- ITS/Traffic
- MVA/DMV (crashes)
- Railroads
- Transit

#### Type of Business Partner

- Developer
- OEM

#### Region

- USA

Michael Baker Corporation applies GIS technology to a wide range of transportation-related disciplines including statewide centerline collection, automated straight-line diagrams (SLDs), corridor analysis for environmental impact statements, and transit and ridership demand analysis. Baker's strong experience in transportation engineering complements this expertise. It also offers a comprehensive suite of field data collection technology and services that integrate GIS with GPS to provide robust solutions using advanced wearable and handheld devices along with GPS.

#### Product Description

1. GeoLink™ 6.2—ArcGIS: GeoLink is a patented mobile GPS/GIS mapping application that displays the user's position and GIS data in the field on top of any vector or raster imagery for direct updating and ground verification.
2. Automated Straight-Line Diagrams—ArcGIS: Create, display, query, and print interactive SLD pages for user-defined routes, attributes, and features.
3. Corridor analysis—ArcIMS: Provides project-specific GIS systems for use in corridor and alignment studies.



### Navtrak Inc.

2000 Northwood Drive  
Salisbury, MD 21801  
USA

Phone: 410-548-2337  
Fax: 410-860-2337  
Web: [www.navtrak.net](http://www.navtrak.net)

#### Industry Categories

- Fleet Management
- ITS/Traffic
- MVA/DMV (crashes)
- Transit

#### Type of Business Partner

- Developer
- Reseller

#### Region

- USA

Navtrak Inc. provides real-time vehicle monitoring, mapping, and reporting for government and private-sector use.

- View vehicles on maps with Navtrak or import routes from ArcLogistics Route and see vehicles in real time, traveling designed routes.
- Send alert signals when vehicles are off course by location or time.
- Set boundaries around hot zones.
- View reports showing vehicle speeds, miles traveled, stop times, stop lengths, stop locations, and more.
- Monitor events including compartment temperatures, door open/closed, and lift up/down.

#### Product Description

Navtrak Axis—ArcLogistics Route: Adds real-time route viewing and managing capabilities



### Neel-Schaffer Inc.

Hobbs Building, Suite 207  
4205 Hillsboro Road  
Nashville, TN 37215  
USA

Phone: 615-383-8420  
Fax: 615-383-9984  
Web: [www.neel-schaffer.com](http://www.neel-schaffer.com)

#### Industry Categories

- Highways/Streets
- ITS/Traffic
- Railroads
- Transit

#### Type of Business Partner

- Developer
- Reseller

#### Region

- USA

Neel-Schaffer Inc. was founded as an engineering and planning consulting firm in 1983. The firm now has offices in six southeastern states. Neel-Schaffer has become adept at not only responding to technological advances but also being in the forefront of their utilization. Neel-Schaffer's developers and programmers integrate existing systems and software packages and develop new programs and applications tailored to clients' engineering and planning needs.

#### Product Description

1. CollisionView—MapObjects: Allows users to locate and analyze crashes and summarize data using GIS coordinates
2. SignTrak—MapObjects: Allows users to inventory, analyze, and manage traffic signs using GIS coordinates



### New Light Technologies, Inc.

GIS Department, 6615 2nd Street NW  
Washington, DC 20012  
USA

Phone: 202-638-6948  
Fax: 202-638-6944  
Web: [www.nltgis.com](http://www.nltgis.com)

#### Industry Categories

- Aviation
- Fleet Management
- Highways/Streets
- ITS/Traffic
- Maritime
- MVA/DMV (crashes)
- Railroads
- Transit

#### Type of Business Partner

- Consultant
- Developer

#### Region

- Africa
- USA

New Light Technologies, Inc. (NLT), headquartered in Washington, D.C., helps its clients manage and implement the wave of new technological advancements. Since its establishment in 2001, NLT has offered the private and public sectors a wealth of information technology talent. The company's consulting services include program and project management; GIS consulting and implementation; enterprise software, database engineering, and integration services; and outsourced managed service solutions.

NLT is an ESRI-authorized business partner working on all aspects of ESRI GIS technology implementation services and consulting including experience and expertise in ArcGIS services, ArcSDE with Oracle and SQL Server, and ArcIMS/ArcWeb<sup>SM</sup> Services with Java and Microsoft .NET. The company is known for its sound technical implementations and outstanding customer service. NLT has led and supported the development of leading-edge GIS implementations using ESRI technologies that have given NLT a reputation as a solid partner for government and industry. In addition to technical services and consulting, NLT also provides GIS application hosting services as well as on-site and managed GIS training services.



### Orbital Sciences

7160 Riverwood Drive  
Columbia, MD 21046  
USA

Phone: 443-259-7400  
Fax: 443-259-7255  
Web: [www.tms-online.com](http://www.tms-online.com)

#### Industry Categories

- Fleet Management
- Transit

#### Type of Business Partner

- Developer
- Reseller
- Runtime

#### Region

- USA

Orbital Transportation Management Systems (TMS) is the country's leading supplier of satellite-based AVL fleet management systems for the expanding intelligent transportation systems market. TMS incorporates ESRI's ArcView mapping product in its AVL solution. Vehicles are tracked on a map showing late, early, or off-route status, and using the map, voice calls and data messages are sent. Map maintenance is used to generate GIS data for annunciators, automatic passenger counters, and route and schedule adherence.



### Parsons Brinckerhoff

250 W. 34th Street  
New York, NY 10119  
USA

Phone: 212-465-5413  
Fax: 212-465-5595  
Web: [www.pbworld.com](http://www.pbworld.com)

#### Industry Categories

- Aviation
- Highways/Streets
- ITS/Traffic
- Maritime
- Railroads
- Transit

#### Type of Business Partner

- Corporate Consultant

#### Region

- Worldwide

Parsons Brinckerhoff (PB), founded in 1885, is one of the oldest continuously operating engineering firms in the United States. As PB has grown, so has its range of services. PB's particular GIS focus is in transportation applications with complementary skills in CAD and computer visualization. Its ESRI expertise includes ArcSDE, ArcObjects, and Avenue development; transportation data modeling; and linear referencing. PB's custom applications include tools for displaying turning movement data, pedestrian walk time analysis, freight routing, and modeling/GIS integration.



### Parsons Corporation

100 W. Walnut Street  
Pasadena, CA 91124  
USA

Phone: 626-440-3313  
Fax: 626-440-2262  
Web: [www.parsons.com](http://www.parsons.com)

#### Industry Categories

- Aviation
- Fleet Management
- Highways/Streets
- ITS/Traffic
- MVA/DMV (crashes)
- Railroads
- Transit

#### Type of Business Partner

- Corporate Consultant

#### Region

- Worldwide

Parsons Corporation is a worldwide engineering company, addressing all types of transportation issues. Parsons uses ArcGIS to address planning and design work including roadway and bridge design, airport/railway design, and transportation and land-use planning.

#### Product Description

SF3 Race/Income mapping—ArcGIS: Creates maps showing distribution of races and low-income groups



### Pathfinder Logistics Solutions, Inc.

1489 Baltimore Pike, Suite 206  
Springfield, PA 19086  
USA

Phone: 610-541-0811

Fax: 610-541-0812

Web: [www.pathfinderlogistics.com](http://www.pathfinderlogistics.com)

#### Industry Categories

- Fleet Management
- Highways/Streets

#### Type of Business Partner

- Reseller

#### Region

- USA

Pathfinder Logistics Solutions, Inc., provides customized turnkey routing and scheduling solutions for delivery and service fleets using ESRI's ArcLogistics Route software. ArcLogistics Route builds the most efficient routes over real street networks while considering factors such as customer delivery windows, vehicle capacity, driver work rules, and so forth. Pathfinder helps clients maximize their ArcLogistics investment with routing needs assessment, ArcLogistics Route customization (plugins), enterprise system integration, GPS/AVL integration, on-site training, map data customization, and tailored support programs.



### Patrick Engineering Inc.

4970 Varsity Drive  
Lisle, IL 60532  
USA

Phone: 630-434-7250

Fax: 630-434-8400

Web: [www.patrickengineering.com](http://www.patrickengineering.com)

#### Industry Categories

- Aviation
- Highways/Streets
- Railroads

#### Type of Business Partner

- Reseller

#### Region

- Canada
- Latin America
- Middle East
- USA

Patrick Engineering Inc. employs more than 260 persons in seven offices. Patrick's GIS, Surveying, and Mapping Services Division is staffed by technically trained personnel holding both master's and bachelor's degrees. GIS staff members have had specialized training in various GIS software, including the ESRI suite of products, and are ESRI-authorized instructors. The division also provides professional GIS surveying and mapping services to both public and private clients.



### PBS&J

482 S. Keller Road  
Orlando, FL 32810-6101  
USA

Phone: 407-647-7275

Fax: 407-647-0624

Web: [www.pbsj.com](http://www.pbsj.com)

#### Industry Categories

- Aviation
- Highways/Streets
- ITS/Traffic
- Transit

#### Type of Business Partner

- Corporate Consultant
- Developer
- Reseller

#### Region

- USA

PBS&J is a multidisciplined engineering firm offering a variety of technology innovations for the transportation industry. PBS&J provides application development and master planning services using GIS, relational database management systems, and Web technologies to government agencies, industries, and private entities. Its services include requirements analysis, database design, programming, testing, and implementation for enterprise solutions to increase system security, operational efficiency, regulatory compliance, and planning. Transportation solutions available through PBS&J include ROW TRACKER, Corridor Constraints Analyst, and Geographic Permit Management and Compliance System (GPMACS).

#### Product Description

1. ROW TRACKER—ArcIMS: Comprehensive solution for property acquisition management
2. Corridor Constraints Analyst—ArcGIS: Automates measuring, cataloging, and summary of development constraints
3. GPMACS—ArcIMS: Comprehensive solution for permit compliance and management





### Pixxures, Inc.

15000 W. 64th Avenue  
Arvada, CO 80007  
USA

Phone: 303-302-8600  
Fax: 303-302-8601  
Web: [www.pixxures.com](http://www.pixxures.com)

#### Industry Categories

- Aviation
- Fleet Management
- Highways/Streets
- ITS/Traffic
- Railroads
- Transit

#### Type of Business Partner

- Publisher
- Reseller

#### Region

- Worldwide

As agencies centrally locate geographic data for display and query, datasets are sometimes inconsistent in positional accuracy, format, and projection. To facilitate intelligent and expeditious spatial analysis between discrete datasets, it is necessary to align them accurately with the base layer on which they are displayed (orthophotography and/or cadastral data). Pixxures, Inc.'s LineWorks® service accomplishes this and increases the level of accuracy of each data layer to that layer possessing the highest spatial accuracy.

#### Product Description

Pixxures' LineWorks—ArcInfo: Realigns multiple vector datasets (transportation and others) with associated annotation to a more accurate reference dataset



### Planet GIS LLC

P.O. Box 1747  
Castle Rock, CO 80104-1747  
USA

Phone: 720-488-4378  
Fax: 720-488-4930  
Web: [www.planet-gis.com](http://www.planet-gis.com)

#### Industry Categories

- Highways/Streets
- Railroads
- Transit

#### Type of Business Partner

- Consultant

#### Region

- Canada
- USA

The staff at Planet GIS® LLC has 20 years of experience in a variety of surveying and mapping projects including utility infrastructure, road, address, ROW, and as-built mapping. GIS services are provided to support transportation corridor planning and analysis, maintenance planning, roadway asset inventories, access control, and safety statistics. Integration of land-use and transportation plans with full support of an executive information system is offered. Software experience includes ArcGIS, ArcIMS, ArcView, and extensions.



### Planning Technologies Inc.

10131 Coors Boulevard NW, Suite 1–2  
PMB 894  
Albuquerque, NM 87048  
USA

Phone: 505-898-0032

Fax: 505-890-9122

Web: [www.all4gis.com](http://www.all4gis.com)

#### Industry Categories

- Highways/Streets
- ITS/Traffic
- Railroads
- Transit

#### Type of Business Partner

- Developer

#### Region

- USA

Planning Technologies Inc. specializes in the development of customized and innovative GIS solutions supporting transportation and land-use planning. Its capabilities address the full spectrum of the ESRI family of GIS products including ArcView 3.3, ArcInfo, MapObjects, ArcGIS, and ArcIMS. The firm's applications address many aspects of transportation and land-use planning including traffic count inventories, traffic accident databases, travel demand forecasting, environmental justice, and GASB 34 as well as sophisticated land-use simulation and modeling.

#### Product Description

1. M2Probe—Extension to ArcView 3.3: Automatically converts all data structures in the EMME/2™ travel demand forecasting system to ArcView shapefiles and provides tools for travel analysis and visualization
2. TRAM—Extension to ArcView 3.3: Generates travel time contours and other measures of general accessibility through multimodal highway, bicycle, pedestrian, and transit networks, following published timetables
3. SAM—Suite of ArcView 3.3 applications: Land-use forecasting model that simulates urban growth and development throughout metropolitan areas and includes land-use editors and translators to assemble land-use datasets for travel demand models automatically
4. TRANSMATCH—Microsoft Access and MapObjects: Desktop ride share matching software to manage carpool matching databases, geocode addresses, generate matches, and prepare reports
5. County in a Box—MapObjects: Easy-to-use customizable map viewer suitable for distributing GIS information throughout organizations or publishing it on CD-ROM, geared for end users not proficient in GIS or computers



### PTV AG

Stumpfstraße 1  
76131 Karlsruhe  
Germany

Phone: +49-721-9651-0

Fax: +49-721-9651-299

Web: [www.ptvag.com](http://www.ptvag.com)

#### Industry Categories

- Fleet Management
- ITS/Traffic

#### Type of Business Partner

- Developer

#### Region

- Worldwide

PTV AG provides software, consulting, and research for travel, traffic, and transportation planning in the B2B field. For years, PTV products, such as map&guide, PTV Intertour, and PTV Vision with the VISUM module for traffic and transportation planning, have been established as European market leaders. Future-oriented concepts ensure continuous mobility in the traffic, mobility, and logistics business fields.

As a new ESRI integration partner, PTV offers seamless generation, processing, and management of GIS data in ArcGIS and shapefile formats.

#### Product Description

VISUM 9.2 uses ArcGIS 8.3.



### R.A. Smith & Associates, Inc.

16745 W. Bluemound Road, Suite 200  
Brookfield, WI 53005-5938  
USA

Phone: 262-786-1777  
Fax: 262-786-0826  
Web: [www.SuccessGIS.com](http://www.SuccessGIS.com)

#### Industry Categories

- Highways/Streets
- MVA/DMV (crashes)
- Transit

#### Type of Business Partner

- Consultant
- Reseller

#### Region

- USA

The R.A. Smith & Associates, Inc., SuccessGIS implementation program is designed to meet the needs of the transportation industry. The foundation of the SuccessGIS program centers around four primary elements: planning, building, integrating, and educating, which feature ESRI's software products. As part of its program, R.A. Smith also offers ESRI-authorized training courses.

#### Product Description

Public Comment—ArcGIS: Tracks public comments for transportation-related projects



### Radio Satellite Integrators, Inc.

19144 Van Ness Avenue  
Torrance, CA 90501-1834  
USA

Phone: 310-787-7700  
Fax: 310-787-7435  
Web: [www.radsat.com](http://www.radsat.com)

#### Industry Categories

- Fleet Management
- ITS/Traffic
- Maritime
- Transit

#### Type of Business Partner

- Developer
- OEM
- Reseller

#### Region

- Worldwide

Radio Satellite Integrators, Inc. (RSI), designs, manufactures, and implements AVL and mobile data systems for fleet management. The V-Track vehicle tracking system integrates GPS, any type of wireless communications, and ESRI GIS products. The system can also be integrated with any type of back-end application such as dispatching and scheduling programs. Founded in 1990, RSI is one of the oldest and most experienced AVL companies in the industry with nearly 100 clients worldwide.

#### Product Description

1. RSI V-Track AVL—Based on ArcView: Turnkey GPS-based vehicle tracking and mobile data systems
2. RSI T-SPOT—Based on MapObjects: In-vehicle mobile software integrated with any type of scheduling or CAD system



### Rapidis

Jaegersborg Alle 4  
Charlottenlund, 2920  
Denmark

Phone: +45-3996-5960  
Fax: +45-3996-5934  
Web: [www.rapidis.com](http://www.rapidis.com)

#### Industry Categories

- Highways/Streets
- ITS/Traffic
- Railroads
- Transit

#### Type of Business Partner

- Consultant
- Developer

#### Region

- Asia Pacific
- Canada
- Europe
- USA

Rapidis develops and markets software products and provides solutions and consultancy services for the public and private transportation sectors.

Rapidis combines a broad theoretical background with strong expertise in GIS and software development. The aim is to produce powerful tools and solutions by combining a sound theoretical foundation with solid technical implementations.

#### Product Description

1. Traffic Analyst—ArcGIS: Transportation planning and modeling extension for ArcGIS
2. MapNoise—ArcGIS: Detailed noise modeling and mapping extension for ArcGIS



### Red Hen Systems, Inc.

2850 McClelland Drive, #3900  
Fort Collins, CO 80525  
USA

Phone: 970-493-3952  
Fax: 970-493-3938  
Web: [www.redhensystems.com](http://www.redhensystems.com)

#### Industry Categories

- Aviation
- Highways/Streets
- Maritime
- MVA/DMV (crashes)
- Railroads
- Transit

#### Type of Business Partner

- Developer

#### Region

- Worldwide

Red Hen Systems, Inc., is the leading provider of spatial multimedia solutions offering tools necessary for the collection and mapping of digital photographs, video, and audio in the ArcGIS environment. Customers have the ability to seamlessly add georeferenced ground-truthing motion and still imagery into their GIS.

#### Product Description

1. PixPoint™ ArcGIS extension: Add in to automatically link digital still images with their GPS coordinates.
2. GeoVideo™ ArcGIS extension: Add in to bring spatially accessible video into a map layer.



### Ripple Systems

Level 5, 85 The Esplanade  
South Perth 6151  
Australia

Phone: 618-9368-8600  
Fax: 618-9368-8699  
Web: [www.ripple-systems.com](http://www.ripple-systems.com)

#### Industry Categories

- Highways/Streets
- ITS/Traffic
- Railroads
- Transit

#### Type of Business Partner

- Developer

#### Region

- Worldwide

Ripple Systems' transActive™ is an advanced transport management system that has engineered some of the world's most sophisticated expressway, tunnel, and rail system projects. It is a command and control system that supports the efficient management of infrastructure in a real-time, mission-critical environment while adhering to stringent international safety standards. transActive puts disparate systems/subsystems through a common human-machine interface, enabling operators to monitor and control major infrastructure while supporting their organization's business/operational rules as if they were a one-purpose built system.

#### Product Description

1. transActive Highways—ArcSDE: Advanced highway management system
2. transActive Rail—ArcSDE: Advanced rail management system
3. transActive ITS—ArcSDE: Advanced intelligent transport system
4. transActive Transit—ArcSDE: Advanced transit management system



### RouteMatch Software Inc.

1349 W. Peachtree Street, Suite 1200  
Atlanta, GA 30309  
USA

Phone: 404-876-5160  
Fax: 404-898-1145  
Web: [www.routematch.com](http://www.routematch.com)

#### Industry Categories

- Transit

#### Type of Business Partner

- Developer

#### Region

- USA

RouteMatch Software Inc. provides advanced transportation management software and solutions designed for the paratransit and demand response industry. Its software allows users to automate data management, scheduling, routing, optimization, dispatching, verification, billing, and reporting.

#### Product Description

1. RouteMatch™ XP—ArcView: Manual scheduling
2. RouteMatch PM—ArcView: Computer-assisted scheduling
3. RouteMatch TS—ArcView: Fully automated scheduling



### RouteSmart Technologies, Inc.

8850 Stanford Boulevard, Suite 2600  
Columbia, MD 21045-5804  
USA

Phone: 800-977-7284  
Fax: 410-290-0334  
Web: [www.routesmart.com](http://www.routesmart.com)

#### Industry Categories

- Fleet Management

#### Type of Business Partner

- Developer
- Reseller

#### Region

- Worldwide

RouteSmart Technologies, Inc., develops, markets, licenses, and supports the RouteSmart Route Optimization System—an ArcGIS software-based system for routing fleet and personnel assets within the newspaper, postal, utility meter reading, and solid waste industries. The system is specifically designed for solving residential and commercial service routing problems in which precise considerations must be accounted for with respect to the design of balanced, operationally efficient routes.

#### Product Description

RouteSmart—ArcView and ArcGIS: Route optimization software



### Safe Software, Inc.

2017-7445 132nd Street  
Surrey, BC V3W 1J8  
Canada

Phone: 604-501-9985  
Fax: 604-501-9965  
Web: [www.safe.com](http://www.safe.com)

#### Industry Categories

- Aviation
- Fleet Management
- Highways/Streets
- ITS/Traffic
- Maritime
- Railroads
- Transit

#### Type of Business Partner

- Consultant
- Corporate Alliance
- Developer

#### Region

- Worldwide

Safe Software, Inc., is the leading supplier of spatial data translation and transformation technologies. The company's FME® and SpatialDirect™ products work directly with ArcGIS and ArcIMS and power the ArcGIS Data Interoperability extension. Its core technology provides access to more than 130 GIS, CAD, and database formats. For more information, visit [www.safe.com/esri](http://www.safe.com/esri).

#### Product Description

FME for ArcGIS: Designed specifically for ArcGIS Data Interoperability users, it enables direct access to more than 50 FME-supported formats and functionality from within ArcGIS. For more details, refer to the ArcGIS Data Interoperability and FME for ArcGIS product capabilities table and comparison chart of supported formats and transformers at [www.safe.com/esri](http://www.safe.com/esri).



### SAS U.S. Government

One SAS Campus Drive  
Cary, NC 27513  
USA

Phone: 919-677-8000  
Fax: 919-677-4444  
Web: [www.sas.com/govedu](http://www.sas.com/govedu)

#### Industry Categories

- Aviation
- Fleet Management
- Highways/Streets
- ITS/Traffic
- Maritime
- MVA/DMV (crashes)
- Railroads
- Transit

#### Type of Business Partner

- Corporate Alliance

#### Region

- Worldwide

As the leader in business intelligence, SAS U.S. Government focuses on understanding an organization's business drivers and creating answers to complex problems. The company provides transportation agencies with the capability to integrate spatial and nonspatial applications for true business intelligence.

SAS is used at more than 40,000 sites worldwide including all 50 U.S. states and many local governments. For nearly three decades, SAS has delivered the latest technology to its government customers, taking an organization's operations to a new level.



### Short Elliott Hendrickson Inc.

6418 Normandy Lane, Suite 100  
Madison, WI 53719  
USA

Phone: 608-274-2020  
Fax: 608-274-2026  
Web: www.sehinc.com

#### Industry Categories

- Highways/Streets

#### Type of Business Partner

- Developer
- Reseller

#### Region

- USA

Short Elliott Hendrickson Inc. (SEH) is a full-service consulting firm. SEH specializes in application development and mapping. The application is called Snow Router. It is a MapObjects LT application, designed to assist the user in mapping snow plow routes. The application uses predefined roadway centerline files with specific attributes. The interface is easy to use and intuitive. The user can save the output to shapefile format for use in other applications.

#### Product Description

Snow Router—MapObjects LT: Interactive application for snowplow routing



### Software Technologies

77 Chekhov Street  
Taganrog, Rostov Region 347900  
Russia

Phone: 7-863-431-5400  
Fax: 7-863-431-5300  
Web: www.softech.ru

#### Industry Categories

- Fleet Management
- Highways/Streets
- Railroads
- Transit

#### Type of Business Partner

- Developer

#### Region

- Europe
- USA

Software Technologies provides GIS software development services. Services include geospatial application development, Internet GIS, routing/logistics, mobile/wireless solutions, data compression, and data conversion.

#### Product Description

1. ESRI ArcIMS Route Server—ArcIMS: Nationwide routing extension to ArcIMS
2. ESRI ArcPad StreetMap™—ArcPad: Routing and geocoding extension to ArcPad
3. Maptech ArcPad extension—ArcPad: Seamless viewing of topographic maps and DOQQs inside ArcPad



### Southbank Systems Limited

Compass Centre North Pembroke  
Chatham Maritime, Kent ME4 4YG  
England

Phone: 44-1634-880-141  
Fax: 44-1634-880-383  
Web: www.southbanksystems.com

#### Industry Categories

- Highways/Streets

#### Type of Business Partner

- Developer

#### Region

- Asia Pacific
- Europe

Southbank Systems Limited develops world-class infrastructure management systems and delivers them as complete and effective solutions to a global customer base. Roads, bridges and structures, lighting and signs, soft landscape, trees, and property—in fact, the full range of infrastructure assets—are managed within Confirm.

#### Product Description

1. Confirm MapLink—ArcView: Links from Confirm to map assets
2. Confirm MapView—ArcView: Provides an embedded, view-only window for viewing mapped assets



### Spatial Dimension (Pty.) Ltd.

Room 5 Technosquare  
42 Morningside, Ndabeni  
Cape Town, WC 7405  
South Africa

Phone: 27-21-531-3132  
Fax: 27-21-531-4209  
Web: [www.spatialdimension.co.za](http://www.spatialdimension.co.za)

#### Industry Categories

- Highways/Streets
- ITS/Traffic

#### Type of Business Partner

- Developer

#### Region

- Africa

Spatial Dimension (Pty.) Ltd. is geared to provide professional and expert GIS and database consulting services. It strives to provide cost-effective total solutions to its clients including system analysis, system design, database design, application development, system support, sales, and other GIS management and consulting services.

#### Product Description

TIMS—ArcGIS, ArcIMS, ArcPad, ArcSDE: TIMS forms part of the city of Cape Town's Advanced Transport Monitoring System. It is a set of advanced tools for mapping and managing spatial data for traffic intersections. Data stored in a central Oracle ArcSDE geodatabase is served over the Web by ArcIMS for viewing and exported to ArcPad for on-site mapping using handheld computers. All workflows are optimized, and a full audit trail is available for statutory requirements.



### speedikon Facility Management AG

Berliner Ring 89  
64625 Bensheim  
Germany

Phone: 49-6251-584-0  
Fax: 49-6251-584-303  
Web: [www.speedikonfm.com](http://www.speedikonfm.com)

#### Industry Categories

- Aviation
- Fleet Management
- MVA/DMV (crashes)
- Railroads

#### Type of Business Partner

- Developer

#### Region

- Europe

speedikon® Facility Management AG is a European IT company with major customers in 10 European countries. The head office of the public limited company is located in Bensheim, Germany. The company is devoted to developing software solutions for facility management and for their effective use by real estate and technical organizations as well as providing consulting services. The software is distributed under the names speedikon FM and FM Webdesk and is suitable for any business sector. With more than 40 employees as well as 50 partners and six centers in Europe, the company provides extensive know-how in the area of software development and is familiar with the methods and processes of the real estate market.

#### Product Description

1. The speedikon FM software represents strategic real estate management and is aimed at generating knowledge from real estate data, thus supporting planning reliability, protection of investment, and value conservation real estate. speedikon FM obtains the necessary information from a variety of sources and makes it available to various applications using a data pool.
2. FM Webdesk includes the Internet/intranet-based products of speedikon Facility Management AG. These products provide a Web-based service portal for information and tasks concerning facility management. Providing users with features and data suited to their individual tasks is the aim of this Internet service platform.





### Spescom Software, Inc.

10052 Mesa Ridge Court, Suite 100  
San Diego, CA 92121  
USA

Phone: 858-625-3000  
Fax: 858-625-3010  
Web: [www.spescomsoftware.com](http://www.spescomsoftware.com)

#### Industry Categories

- Railroads

#### Type of Business Partner

- Developer
- Reseller

#### Region

- Canada
- Europe
- USA

Spescom Software, Inc., provides a range of solutions for the transportation industry based on the integration of eB, its collaborative document, configuration, and records management suite with ArcIMS and ArcGIS. This combination of technologies creates a powerful platform that leverages the document, asset, and change management capabilities of eB with the spatial mapping capabilities of GIS. eB™ Rail is a solution for rail infrastructure companies that need to maintain an accurate asset register of all rail assets together with all associated documents, drawings, and records to comply with safety requirements and improve operational performance. eB Rail enables the exact configuration of the rail infrastructure to be maintained throughout its life cycle and includes a powerful change management process to assess the impact of any proposed change and ensure the effective implementation of approved changes.

#### Product Description

eB Rail—ArcGIS: Rail asset configuration management solution



### Surveying And Mapping, Inc.

5508 West Highway 290, Building B  
Austin, TX 78735  
USA

Phone: 512-447-0575  
Fax: 512-326-3029  
Web: [www.saminc.biz](http://www.saminc.biz)

#### Industry Categories

- Aviation
- Highways/Streets
- Railroads
- Transit

#### Type of Business Partner

- Consultant

#### Region

- USA

Surveying And Mapping, Inc. (SAM, Inc.), is a full-service land surveying, photogrammetry, subsurface utility engineering, and GIS services firm focused on providing services for transportation department and design engineers. SAM, Inc.'s fully digital Photogrammetry Department features state-of-the-art digital photogrammetric workstations. Its capabilities extend beyond traditional photogrammetric products of planimetric, topographic, and orthoimagery to include (a) ultralow aerial photography for high-accuracy mapping projects, (b) airborne GPS-controlled photography, and (c) LIDAR services.

#### Product Description

1. Aerial mapping—ArcGIS: Photogrammetrically captures planimetric and topographic data
2. Orthoimagery—ArcGIS: Color/Black-and-white digital orthophotography generation



### Tadpole-Cartesia Inc.

2237 Faraday Avenue, #120  
Carlsbad, CA 92008  
USA

Phone: 760-929-8345  
Fax: 760-692-0484  
Web: [www.tadpolecartesia.com](http://www.tadpolecartesia.com)

#### Industry Categories

- Aviation
- Fleet Management
- Highways/Streets
- ITS/Traffic
- Maritime
- MVA/DMV (crashes)
- Railroads
- Transit

#### Type of Business Partner

- Consultant
- Developer
- Reseller

#### Region

- Canada
- Europe
- USA

Tadpole-Cartesia Inc., a software division of Tadpole Technology PLC, is a leading ESRI ArcGIS solution provider. The firm's flagship product, GO! Sync™, is a modular tool built on ArcObjects and designed to address the complex issues of geodatabase synchronization between multiple ArcSDE and personal geodatabases. It enables fully scalable cost-effective solutions based on standard ArcGIS to be quickly deployed throughout organizations with distributed data requirements or a mobile workforce.

#### Product Description

1. GO! Sync
2. ArcView, ArcEdit™, ArcReader™
3. ArcGIS data replication and synchronization



### Tele Atlas

11 Lafayette Street  
Lebanon, NH 03766  
USA

Phone: 603-643-0330  
Fax: 603-643-6808  
Web: [www.teleatlas.com](http://www.teleatlas.com)

#### Industry Categories

- Fleet Management
- Highways/Streets
- ITS/Traffic
- Railroads
- Transit

#### Type of Business Partner

- Corporate Alliance

#### Region

- Worldwide

Tele Atlas is a worldwide leading provider of digital maps and dynamic location content for a variety of navigation, location-based, and geospatial applications and products. It serves more fleet logistics providers than any other commercial street database vendor. Its proactive method of change detection couples data compilation with a robust and experienced Tele Atlas field collection and validation force. Tele Atlas is a leading supplier of cartographic data for ESRI software products containing geographic data.

#### Product Description

Dynamap®/Transportation—ArcGIS: Street data integrated with ArcGIS software for fleet management



### The Berger Group

1819 H Street NW, Suite 900  
Washington, D.C. 20006  
USA

Phone: 202-912-0200

Fax: 202-293-0787

Web: [www.louisberger.com](http://www.louisberger.com)

#### Industry Categories

- Highways/Streets
- Transit

#### Type of Business Partner

- Corporate Consultant

#### Region

- Worldwide

The Berger Group's transportation planning practice is one of the largest world-wide. Its transportation planning specialists provide transportation services of single mode, multimodal, and intermodal systems for both passenger and freight services. Typical systems planning and evaluation projects include the linking of GIS with state-of-the-art travel demand models and traffic simulation software in a dynamic traffic environment. Its extensive modeling expertise has led to the development of several software packages.

#### Product Description

1. YourMap—ArcGIS: Prints custom map templates
2. Network QA/QC—ArcGIS: Finds errors in a street centerline geometric network



### The CEDRA Corporation

65 W. Broad Street  
Rochester, NY 14614  
USA

Phone: 585-232-6998

Fax: 585-262-2042

Web: [www.cedra.com](http://www.cedra.com)

#### Industry Categories

- Aviation
- Highways/Streets
- Railroads

#### Type of Business Partner

- Developer
- Reseller

#### Region

- Worldwide

The CEDRA Corporation provides state-of-the-art technology to design, explore, query, and analyze data within a self-contained operating environment. CEDRA's AV series suite of software works directly as extensions to ESRI's ArcView and ArcGIS, thereby creating the bridge between engineering and GIS.

#### Product Description

1. CEDRA AVland: Roadway site design for ArcGIS
2. CEDRA AVcogo: COGO for ArcGIS and ArcView
3. CEDRA AVparcel: Mapping solutions tool for ArcGIS and ArcView



### Thininformation Inc.

1370 Washington Pike, Suite 304  
Bridgeville, PA 15017  
USA

Phone: 412-257-8774  
Fax: 412-257-8815  
Web: [www.thininformation.net](http://www.thininformation.net)

#### Industry Categories

- Highways/Streets
- ITS/Traffic
- Railroads

#### Type of Business Partner

- Reseller

#### Region

- USA

Thininformation Inc. provides hardware, software, and services for enterprise GIS solutions. The corporate name—Thininformation—embodies its philosophy of using “thin client” solutions and developing tools that transform volumes of data into meaningful information. The firm’s goal is to use its professional expertise, combined with the best technology, to provide innovative and cost-effective solutions for its clients. The firm has expertise in roadway and bridge design, railroad engineering, dynamic segmentation and linear referencing systems, and logistics.

#### Product Description

1. Railroad Crossing Manager—ArcObjects: Data entry, management, reporting, and mapping system
2. Executive Information Management System—ArcGIS: Enhanced interface developed from DLL functions



### Topomat Technologies SA

6, Chemin Sus-la-Meule  
1297 Founex  
Switzerland

Phone: 41-22-776-0750  
Fax: 41-22-776-0759  
Web: [www.topomat.ch](http://www.topomat.ch)

#### Industry Categories

- Highways/Streets
- ITS/Traffic

#### Type of Business Partner

- Developer

#### Region

- Europe

Specializing in the field of geoinformatics, Topomat Technologies SA is particularly devoted to the design and integration of geographic information systems within large data warehouses. As an ESRI solutions partner, it has acquired an increased knowledge of ESRI’s products in developing custom solutions as well as in setting up large systems based on ESRI software.

Within the Geneva, Switzerland, Mobility Information System project, Topomat Technologies is developing ArcGIS tools and modeling data based on ESRI’s transportation data model.

#### Product Description

1. Edit tools for ArcMap: A set of tools for ArcMap for editing route connectivity, turn restrictions, and transportation modes
2. Symbolology tools for ArcMap: Tools for ArcMap to help display direction-dependent attributes on single features
3. Data modeling within geodatabases: Modeling of transportation data based on ESRI’s transportation data model



### Traftools Inc.

3350 Coy Drive  
Sherman Oaks, CA 91423  
USA

Phone: 818-509-7520  
Fax: 818-728-1124  
Web: [www.traftools.com](http://www.traftools.com)

#### Industry Categories

- Fleet Management
- Highways/Streets
- ITS/Traffic
- Transit

#### Type of Business Partner

- Developer

#### Region

- Worldwide

Traftools Inc. specializes in providing detailed traffic information for transportation-related and navigation-centric applications. Traftools Traffic Information Engine (TIE)™ can derive real-time and predicted traffic information on all major roadways for an entire urban area or specialized control facilities—usually without any additional traffic detector hardware. Along with real-time traffic maps and RouteInfo™ dynamic driving directions, Traftools can provide customized real-time traffic information solutions to meet traffic, fleet, and mobile workforce management and reporting needs.

#### Product Description

1. Traftools TIE—ArcView and ArcGIS: Produces real-time and predicted traffic information (flow, speed, travel time, V/C, delay, queue length, etc.)
2. Real-time traffic maps—ArcView, ArcGIS, ArcSDE, ArcIMS: Internet-ready GIS-based visualizations of real-time traffic information in popular map vendor formats
3. RouteInfo dynamic driving directions—ArcWeb Services: Turn-by-turn shortest time path driving directions based on real-time and predicted traffic conditions



### Trapeze Software Group

1875 S. State Street, Suite 2100  
Orem, UT 84097  
USA

Phone: 801-224-4719  
Fax: 801-224-5906  
Web: [www.smartr.com](http://www.smartr.com)

#### Industry Categories

- Transit

#### Type of Business Partner

- Developer
- OEM
- Reseller

#### Region

- Canada
- USA

Smartr...for Schools™ Transportation Module is an ESRI ArcView software-based school bus routing solution for school districts of all sizes. Student information management, fleet inventory, bus stop management, special education, accident tracking, driver information, and field trips are all managed by one software package.

#### Product Description

Smartr...for Schools Transportation Module—ArcView 3.x: School bus routing software



### Trimble Navigation Limited

645 N. Mary Avenue  
Sunnyvale, CA 94085  
USA

Phone: 408-481-8000  
Fax: 408-481-7744  
Web: [www.trimble.com](http://www.trimble.com)

#### Industry Categories

- Fleet Management
- Highways/Streets
- ITS/Traffic
- Maritime
- Railroads
- Transit

#### Type of Business Partner

- Corporate Alliance

#### Region

- Worldwide

Trimble Navigation Limited is a leading innovator of GPS technology. In addition to providing advanced GPS components, Trimble augments GPS with other positioning technologies as well as wireless communications. Trimble's worldwide presence and unique capabilities position the company for growth in emerging applications including mobile GIS, surveying, automobile navigation, machine guidance, and asset tracking. Founded in 1978 and headquartered in Sunnyvale, California, Trimble has more than 2,000 employees in more than 20 countries worldwide.

#### Product Description

1. GeoExplorer CE Series—ArcPad, ArcGIS: Rugged handheld with integrated GPS receiver and Windows CE
2. Trimble® Recon®—ArcPad: Ultrarugged handheld for all-day field operation
3. GPSCorrect for ArcPad—ArcPad: Differential postprocessing and seamless GPS control with ArcPad
4. GPS Pathfinder Systems—ArcGIS, ArcPad: GPS/GIS data collection and maintenance systems



### Triona AB

Box 762 Borgnasvagen 26  
Borlänge 781 27  
Sweden

Phone: 46-243-624-00  
Fax: 46-243-624-05  
Web: [www.triona.se](http://www.triona.se)

#### Industry Categories

- Fleet Management
- Highways/Streets
- ITS/Traffic
- Railroads
- Transit

#### Type of Business Partner

- Consultant
- Developer
- Reseller
- Runtime

#### Region

- Europe

Triona AB is a leading IT consulting company within the areas of road and transport informatics and industrial IT. Triona carries a long history of development within IT and has a comprehensive knowledge base. Some of its customers are ABB, the Swedish National Road Administration, Stora Enso, the Norwegian National Road Administration, Swedish Railways, the Swedish Land Survey Authority, the Swedish Meteorological Service, StreamServe, and Swedish Radio.

#### Product Description

1. SNVDB—ArcGIS and geodatabase: Swedish forestry road database
2. NVDB—MapObjects, ArcIMS: Swedish road database
3. Stånga—MapObjects: GIS for administration and maintenance of roads
4. OJJE—MapObjects: Online traffic accident registration
5. RDS/TMC—MapObjects: Online traffic message broadcasting
6. Location Code Manager—MapObjects: A tool for location code table management



### Truck Dispatching Innovations Inc.

3832 N. Janssen Avenue, Suite 200  
Chicago, IL 60613  
USA

Phone: 773-327-1027  
Fax: 773-528-0656  
Web: [www.tdinnovations.com](http://www.tdinnovations.com)

#### Industry Categories

- Fleet Management

#### Type of Business Partner

- Reseller

#### Region

- USA

Truck Dispatching Innovations Inc. is a Chicago-based consulting firm focused on companies operating local delivery fleets. The firm assists clients in improving the profitability of their dispatching operations while improving customer service. The firm's focus is ArcLogistics Route software, Cloudberry AVL systems, and handheld mobile technologies for paperless transactions. Truck Dispatching Innovations is an authorized ArcLogistics Route trainer.

#### Product Description

1. Operations consulting—ArcLogistics: Improves the profitability of dispatching operations
2. GPS tracking—ArcLogistics: Integrated AVL solution for ArcLogistics Route



### Universal Map Enterprises Inc.

795 Progress Court  
Williamston, MI 48895  
USA

Phone: 517-655-1956  
Fax: 517-655-2995  
Web: [www.universalmap.com](http://www.universalmap.com)

#### Industry Categories

- Fleet Management
- Highways/Streets
- ITS/Traffic
- MVA/DMV (crashes)
- Railroads
- Transit

#### Type of Business Partner

- Consultant

#### Region

- USA

Take advantage of the Universal Map Enterprises Inc. award-winning cartography by using its digital databases as a map base. Fast track GIS initiatives by overlaying existing data on its professional cartography. Up-to-date, Maplex software-compatible, and of print quality, the firm's datasets are ready for use with ESRI ArcGIS and a geodatabase.

#### Product Description

Cartographic digital database—ArcGIS and geodatabase: Print quality, award-winning, cartographic map base



### University Informatics Associates Inc.

2111 Barren Hill Road  
Conshohocken, PA 19428  
USA

Phone: 610-940-1941  
Fax: 610-940-0251  
Web: [www.uia-inc.com](http://www.uia-inc.com)

#### Industry Categories

- Fleet Management

#### Type of Business Partner

- Developer

#### Region

- USA

University Informatics Associates Inc. (UIA) principals are senior consulting and software development practitioners with extensive industry experience and advanced degrees (Ph.D.'s). UIA's expertise is in decision support systems including production planning and scheduling, integrated distribution planning, expert systems, and neural networks. UIA develops custom adaptations of ArcLogistics Route for propane distribution, visiting nurse applications, ATM replenishment, and field service dispatching. UIA has proprietary statistical and optimization algorithms and patents for these adaptations.

#### Product Description

Risk managed routing—ArcLogistics Route: Integrated inventory and routing optimization



### Urban Crossroads, Inc.

41 Corporate Park, Suite 300  
Irvine, CA 92606  
USA

Phone: 949-660-1994

Fax: 949-660-1911

Web: [www.urbanxroads.com/sdg](http://www.urbanxroads.com/sdg)

#### Industry Categories

- Highways/Streets
- ITS/Traffic

#### Type of Business Partner

- Consultant

#### Region

- USA

Urban Crossroads, Inc., is a transportation planning, engineering, and GIS application development firm that specializes in assisting both public and private sector clients to implement solutions based on leading-edge ESRI technologies such as ArcGIS, MapObjects, ArcIMS, and ArcSDE. Its success is based on understanding each client's issues and developing solutions that align technology with key business objectives. Urban Crossroads, Inc., offers services in needs assessment/system design, systems integration, application development, and spatial analysis.

#### Product Description

1. Needs assessment and planning
2. Systems design and implementation
3. Database development
4. Application development
5. Spatial analysis



### Vanasse Hangen Brustlin, Inc.

101 Walnut Street  
Watertown, MA 02471  
USA

Phone: 617-924-1770

Fax: 617-924-2286

Web: [www.vhb.com](http://www.vhb.com)

#### Industry Categories

- Highways/Streets
- ITS/Traffic

#### Type of Business Partner

- Developer
- Reseller

#### Region

- USA

Vanasse Hangen Brustlin, Inc. (VHB), has provided GIS data collection and management solutions to hundreds of municipal clients. VHB has developed a suite of ArcPad tools and custom desktop applications for the collection, display, and analysis of features including storm water systems, on-street parking, signs, and other municipal assets. By using GPS technology, ArcPad, and custom desktop solutions, municipalities can efficiently collect data in the field and manage their resources in the office.

#### Product Description

1. RM Drainage—ArcPad: Provides easy-to-use field data collection tools utilizing GPS and ArcPad. The system features a custom desktop application that allows management of data in the office and integration with ArcIMS.
2. RM Traffic—ArcPad: Allows users to collect and manage traffic signs, meters, and parking using GPS and ArcPad. The system features a custom desktop application that allows management of data in the office and integration with ArcIMS.
3. RM Generic—ArcPad: Enhances investments with GPS and ArcPad. This suite of tools allows users to collect virtually any type of feature: points (trees, poles, hydrants, etc.), lines (guardrails, pavement markings, etc.), and polygons (open space, buildings, wetlands, etc.). The system features a custom desktop application that allows management of data in the office and integration with ArcIMS.



**VARS BRNO a.s.**

Kroftova 80  
Brno 616 00  
Czech Republic

Phone: 420-5-41219001  
Fax: 420-5-41213862  
Web: www.vars.cz

**Industry Categories**

- Fleet Management
- Highways/Streets
- ITS/Traffic
- Maritime

**Type of Business Partner**

- Developer

**Region**

- Worldwide

VARS BRNO a.s. is a Czech joint stock company established in 1995. The company is a young and dynamic organization involved in the design and implementation of software solutions for the highways, logistics, and transportation sectors and GIS systems for municipal authorities. Its goal is to develop and provide high-quality, cost-effective solutions based on recognized standards. It is experienced in the development and implementation of solutions based on ESRI ArcGIS (as an ESRI-authorized developer), Oracle, and Microsoft platforms. The entire design and development life cycle of each project is controlled and aided by the use of leading-edge CASE tools, helping to deliver secure and robust systems to VARS BRNO clients. The company also cooperates closely with partners from Great Britain in the design and implementation of systems for both local and international clients and the delivery of expertise in highways and transportation.

**Product Description**

1. RIMS Network Manager—ArcEditor: Creation and maintenance of multilevel networks for relating all events by ITS and asset management subsystems
2. RIMS WebPortal—ArcIMS: Subsystem for publishing road data
3. RIMS Asset Manager—ArcGIS: Subsystem for digital inventory, inspections, and maintenance of roads with open interface to Pavement Management System
4. RIMS Bridge Manager—ArcIMS: Subsystem for digital inventory, inspections, and maintenance of bridges
5. RIMS Road Works—ArcIMS: Subsystem for planning and coordinating roadwork
6. RIMS Traffic Information—ArcIMS: Subsystem for collecting, checking, and approving traffic information
7. RIMS AlertC—ArcGIS: Subsystem for coding traffic information data to AlertC format for traffic management control broadcasts
8. Fleet Manager—ArcIMS, ArcLogistics Route: GPS wireless-based Web solution for online tracking of planned routes and stops

**Vieux & Associates, Inc.**

1215 Crossroads Boulevard, Suite 118  
Norman, OK 73072-3359  
USA

Phone: 405-292-6259  
Fax: 405-292-6258  
Web: www.vieuxinc.com

**Industry Categories**

- Aviation
- Fleet Management
- Highways/Streets
- ITS/Traffic
- Maritime
- MVA/DMV (crashes)
- Railroads
- Transit

**Type of Business Partner**

- Consultant

**Region**

- USA

Vieux & Associates, Inc., specializes in GIS, advanced hydrologic modeling, and hydrologic applications of radar rainfall data. GIS data in real time aids analysis and information dissemination for event reconstruction. High-precision rainfall data is provided at user-selected time intervals and at spatial resolution for water/watershed studies and wet weather flow modeling (NEXRAD Level II data).

**Product Description**

1. Vflo™ for ArcGIS—ArcGIS: Physics-based distributed hydrologic model for reconstruction of runoff events
2. RainVieux—ArcGIS and ArcView: Calibration of radar rainfall products



### Visual Learning Systems, Inc.

1280 South 3rd Street West, Suite 2  
Missoula, MT 59801  
USA

Phone: 406-829-1384  
Fax: 406-829-3593  
Web: [www.vls-inc.com](http://www.vls-inc.com)

#### Industry Categories

- Aviation
- Fleet Management
- Highways/Streets
- ITS/Traffic
- Maritime
- MVA/DMV (crashes)
- Railroads
- Transit

#### Type of Business Partner

- Developer

#### Region

- Worldwide

Visual Learning Systems, Inc.'s (VLS) Feature Analyst extension to ArcGIS, ERDAS® IMAGINE®, and SOCET SET® is the premier feature extraction system for transportation organizations. Feature Analyst allows users to capture, edit, and catalog features for transportation planning and asset management. Using high-resolution aerial or satellite imagery, feature classes—such as roads, guard rails, curbs, and paint on pavement—can be extracted rapidly compared to hand digitizing. Feature Analyst also allows for collection of 2D and 3D features from stereo and LIDAR datasets.

#### Product Description

Feature Analyst—ArcGIS: Adds powerful feature extraction capability to ArcGIS, exports features as shapefiles, and seamlessly integrates with existing geodatabases



### Voice Insight

Avenue J Wybran 40  
Brussels, B-1070  
The Netherlands

Phone: 32-25-295-812  
Fax: 32-25-295-983  
Web: [www.voice-insight.com](http://www.voice-insight.com)

#### Industry Categories

- Aviation
- Fleet Management
- Highways/Streets
- ITS/Traffic
- Maritime
- Railroads
- Transit

#### Type of Business Partner

- Developer

#### Region

- Worldwide

Voice Insight® is a leading provider of software solutions enabling developers to bridge the gap between speech technology and existing database applications. Voice Query Language (VQL™) permits the user to interrogate and interact with his/her applications and information in day-to-day language while in the office or out in the field. The voice interface brings to each industry new possibilities to boost productivity and safety. It can be used on computers, mobile devices (PDA, Tablet PCs, and wearable PCs), and television sets.

#### Product Description

1. Voice-Assistant 4 ArcPad—ArcPad: Adds a voice interface, allowing query and altering of database information, all by the human voice.
2. Voice-Assistant 4 ArcView—ArcView: Adds a voice interface to create new objects and alter existing ones while saving the previous version.
3. All ESRI products can be equipped with a voice interface.



### What if?, Inc.

78 Hickory Lane  
Hudson, OH 44236-2707  
USA

Phone: 330-650-9087  
Fax: 330-650-9087  
Web: [www.What-if-PSS.com](http://www.What-if-PSS.com)

#### Industry Categories

- Highways/Streets
- Transit

#### Type of Business Partner

- Developer

#### Region

- Worldwide

What if?, Inc., is the developer of What if?™, an easy-to-use, GIS-based model that uses readily available GIS data to project population; employment by two-digit Standard Industrial Code; per capita income; and land uses for block groups, traffic analysis zones, and other user-defined areas. What if? is a stand-alone product that works with all versions of ArcGIS, ArcView, and ArcInfo.

#### Product Description

What if?—MapObjects: Uses GIS data to project population, employment, and land uses



### Wölfel Messysteme Software GmbH & Co.

Max-Planck-Strasse 15  
Höchberg 97204  
Germany

Phone: 49-931-457-0850  
Fax: 49-931-457-0859  
Web: [www.woelfel.de](http://www.woelfel.de)

#### Industry Categories

- Aviation
- Highways/Streets
- Maritime
- Railroads

#### Type of Business Partner

- Developer

#### Region

- Europe

Software IMMI for noise mapping, noise prediction, and air dispersion modeling

- Sources: road traffic, railway/railroad traffic, industry and aircraft; point, line, area
- Maps: horizontal, vertical, 2D, 3D
- Interfaces: shapefile, DXF, ArcView Spatial Analyst, dBASE, RTF, Excel®, text
- Noise level, assessment level, Lden, Lnight, Levening, Lday, concentration, deposition, odor perception
- Meteorological correction, ground effect, diffraction, reflection, atmospheric absorption, divergence
- User interface: English, German, French, Italian, Dutch

#### Product Description

IMMI—ArcGIS: Noise mapping, noise prediction, and air dispersion modeling



### Works Consulting LLC

425 W. Guadalupe Road, Suite 109  
Gilbert, AZ 85233  
USA

Phone: 480-813-0570

Fax: 480-813-0571

Web: [www.gisworks.com](http://www.gisworks.com)

#### Industry Categories

- Highways/Streets
- ITS/Traffic
- MVA/DMV (crashes)
- Railroads

#### Type of Business Partner

- Consultant

#### Region

- USA

Works Consulting LLC specializes in linear referencing systems for ArcGIS.

- Generates comprehensive intersection table and measure range table for each route in a multimodal, multimethod, robust linear referencing system
- Exploits ESRI's Transportation data model (UNETRANS), allowing users to build routes efficiently and effectively
- Creates GIS reference tables for non-GIS applications that will generate (i.e., through included LRS geocoders) accurate, linearly referenced point and linear events
- A must-have for transportation agencies with single/multiple linear referencing methods

#### Product Description

1. Centerline Calc—ArcGIS: Generates centerlines from ROW or GPS traces
2. Route Measurer—ArcGIS: Extends route measuring for transportation
3. Curve/Grade Calc—ArcGIS: Generates HPMS curves/grades from GPS
4. Web Data Editor—ArcIMS: Maps with attribute transacting for groups
5. Web PhotoLog Viewer—ArcIMS: Accesses photo log on Web from maps
6. Detour Route Viewer—ArcIMS: Accesses detour plans on the Web



### WSP Sweden AB

Arenavägen 7  
121 88 Stockholm-Globen  
Sweden

Phone: +46-8-688-60-00

Fax: +46-8-688-69-99

Web: [www.wspgroup.se](http://www.wspgroup.se)

#### Industry Categories

- Aviation
- Fleet Management
- Highways/Streets
- ITS/Traffic
- Maritime
- Railroads
- Transit

#### Type of Business Partner

- Consultant
- Developer

#### Region

- Europe

WSP Sweden AB is a fast-growing consultant company within GIS-related development. It serves clients operating in several European countries as well as in northern Africa.

The company's main focus is to increase customer profitability with the help of GIS. One good example is the GIS-based distribution planning system WSP made for DHL in Sweden. Other prime sectors are transport modeling, accessibility studies, ITS, and road/railroad operation and maintenance.

#### Product Description

WSP has developed a large number of ESRI-based solutions, almost all of them tailor made to specific customers. WSP normally chooses to serve in a consultative way, independent of premade solutions.



### Zepco Sales & Service Inc.

508 North Central Expressway  
Richardson, TX 75080  
USA

Phone: 972-690-1052  
Fax: 972-690-1061  
Web: [www.zepco.com](http://www.zepco.com)

#### Industry Categories

- Fleet Management
- Highways/Streets

#### Type of Business Partner

- Other

#### Region

- Worldwide

Zepco Sales & Service Inc. offers a GPS device for tracking vehicles using Smartr...for Schools™ transportation software and ArcView. These devices provide historic or real-time vehicle locations. In addition, a proximity badge reader can be used to geo-code passengers and drivers boarding and disembarking buses or service vehicles.

#### Product Description

GPS—Vehicle location tracking: Bus routing software from EPS using ArcView

## Solution Provider



### WasteBid.com, Inc.

8550 Arlington Boulevard  
Fairfax, VA 22031  
USA

Phone: 703-698-5001  
Fax: 703-698-1306  
Web: [www.wastebid.com](http://www.wastebid.com)

#### Industry Categories

- Highways/Streets
- Railroads
- Transit

#### Type of Business Partner

- Developer

#### Region

- Worldwide

FleetRoute software provides highly sophisticated route optimization to field service, distribution, and dispatch operations. FleetRoute has proprietary algorithms for high-density residential and point-to-point routing applications including service day optimization, route workload balancing, facility siting, and territory definition. FleetRoute is provided as stand-alone software, integrated with billing and customer service systems, or as a service bureau. WasteBid.com's clients range from large to small local governments and companies in North America and Europe.

#### Product Description

FleetRoute—ArcView GIS: Route optimization software



**With HP, the future of government & transportation  
is in your hands.**

Today's state and local government environment is complex, unpredictable and filled with IT challenges. A tough economic climate and budgetary shortfalls often make it necessary to cut services or increase taxes and fees. At the same time, citizens are demanding more from their cities, counties and states. HP's State and Local Government line of business focuses on delivering technologies that help keep our communities safer, streamline the business of government, and provide services to citizens. From iPAQs and Compaq Tablet PCs to notebooks, HP has the products, services, solutions and partnerships to help cities and states provide a service level that was previously unattainable. State and local government agencies also are feeling the pressure to provide their employees access to information anytime and anywhere so they can communicate with no limitations. HP's wireless solutions can put critical information in the hands of government workers whenever and wherever they need it.





For more than 35 years ESRI has been helping people manage and analyze geographic information. ESRI offers a framework for implementing GIS technology in any organization with a seamless link from personal GIS on the desktop to enterprise wide GIS client/server and data management systems. ESRI GIS solutions are flexible and can be customized to meet the needs of our users. ESRI is a full-service GIS company, ready to help you begin, grow, and build success with GIS.

## Corporate

ESRI  
380 New York Street  
Redlands, California  
92373-8100, USA  
Telephone: 909-793-2853  
Fax: 909-793-5953

For more information  
on ESRI, call

**1-800-447-9778**

(1-800-GIS-XPRT)

or contact an ESRI value-added  
reseller near you.

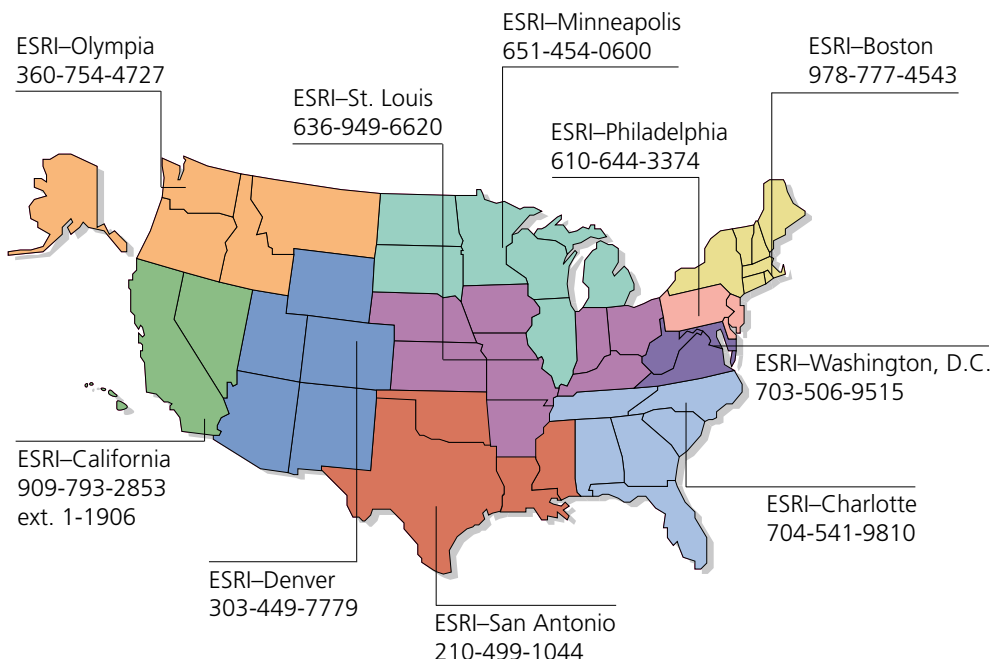
Send e-mail inquiries to

**info@esri.com**

Visit ESRI's Web page at

**www.esri.com**

## Regional Offices



## International Offices

Outside the United States,  
contact your local ESRI distributor.  
For the number of your distributor,  
call ESRI at 909-793-2853,  
ext. 1-1235,  
or visit our Web site at  
**www.esri.com/international**

Australia  
[www.esriaustralia.com.au](http://www.esriaustralia.com.au)

Belgium/Luxembourg  
[www.esribelux.com](http://www.esribelux.com)

Bulgaria  
[www.esribulgaria.com](http://www.esribulgaria.com)

Canada  
[www.esricanada.com](http://www.esricanada.com)

China (Beijing)  
[www.esrichina-bj.cn](http://www.esrichina-bj.cn)

China (Hong Kong)  
[www.esrichina-hk.com](http://www.esrichina-hk.com)

Finland  
[www.esri-finland.com](http://www.esri-finland.com)

France  
[www.esrifrance.fr](http://www.esrifrance.fr)

Germany/Switzerland  
[www.esri-germany.de](http://www.esri-germany.de)  
[www.esri-suisse.ch](http://www.esri-suisse.ch)

Hungary  
[www.esrihu.hu](http://www.esrihu.hu)

India  
[www.esriindia.com](http://www.esriindia.com)

Indonesia/Malaysia  
62-21-527-1023  
603-7874-9930

Italy  
[www.esriitalia.it](http://www.esriitalia.it)

Japan  
[www.esrij.com](http://www.esrij.com)

Korea  
[www.esrikr.co.kr](http://www.esrikr.co.kr)

Netherlands  
[www.esrinl.com](http://www.esrinl.com)

Poland  
[www.esripolska.com.pl](http://www.esripolska.com.pl)

Portugal  
[www.esri-portugal.pt](http://www.esri-portugal.pt)

Romania  
[www.esriro.ro](http://www.esriro.ro)

Singapore  
[www.esrisa.com](http://www.esrisa.com)

Spain  
[www.esri-es.com](http://www.esri-es.com)

Sweden  
[www.esri-sweden.com](http://www.esri-sweden.com)

Thailand  
[www.esrith.com](http://www.esrith.com)

United Kingdom  
[www.esriuk.com](http://www.esriuk.com)

Venezuela  
[www.esriven.com](http://www.esriven.com)

Copyright © 2006 ESRI. All rights reserved. ESRI, the ESRI globe logo, ArcObjects, ModelBuilder, 3D Analyst, ArcEdit, ArcGrid, Maplex, Avenue, ArcXML, PLTS, ArcData, ArcWeb, ArcScene, StreetMap, ArcReader, AML, ESRI—The GIS Company, ArcMap, ArcView, MapObjects, ArcGIS, RouteMAP, ArcLogistics, ArcPad, ArcIMS, NetEngine, ArcSDE, ArcInfo, ArcEditor, @esri.com, and www.esri.com are trademarks, registered trademarks, or service marks of ESRI in the United States, the European Community, or certain other jurisdictions. Other companies and products mentioned herein are trademarks or registered trademarks of their respective trademark owners.



No. GS-35F-5086H

Place ESRI business partner or distributor address here.